

DATE REVISED	DATE REVISED	FED. RD. DIST. NO.	STATE	JOB NO.	SHEET NO.	TOTAL SHEETS
6/12/2024		6	ARK.	110826	3	28
GOVERNING SPECIFICATIONS AND GENERAL NOTES						

GOVERNING SPECIFICATIONS

ARKANSAS STATE HIGHWAY COMMISSION STANDARD SPECIFICATIONS FOR HIGHWAY CONSTRUCTION, EDITION OF 2014, AND THE FOLLOWING SPECIAL PROVISIONS AND SUPPLEMENTAL SPECIFICATIONS:

NUMBER	TITLE
ERRATA	ERRATA FOR THE BOOK OF STANDARD SPECIFICATIONS
FHWA-1273	REQUIRED CONTRACT PROVISIONS FEDERAL-AID CONSTRUCTION CONTRACTS
FHWA-1273	SUPPLEMENT - EQUAL EMPLOYMENT OPPORTUNITY - NOTICE TO CONTRACTORS
FHWA-1273	SUPPLEMENT - SPECIFIC EQUAL EMPLOYMENT OPPORTUNITY RESPONSIBILITIES (23 U.S.C. 140)
FHWA-1273	SUPPLEMENT - EQUAL EMPLOYMENT OPPORTUNITY - GOALS AND TIMETABLES
FHWA-1273	SUPPLEMENT - EQUAL EMPLOYMENT OPPORTUNITY - FEDERAL STANDARDS
FHWA-1273	SUPPLEMENT - POSTERS AND NOTICES REQUIRED FOR FEDERAL-AID PROJECTS
FHWA-1273	SUPPLEMENT - WAGE RATE DETERMINATION
100-3	CONTRACTOR'S LICENSE
100-4	DEPARTMENT NAME CHANGE
102-2	ISSUANCE OF PROPOSALS
102-3	PREQUALIFICATION OF BIDDERS
103-2	CONTACT INFORMATION FOR MOTORIST DAMAGE CLAIMS
105-4	MAINTENANCE DURING CONSTRUCTION
107-2	RESTRAINING CONDITIONS
108-1	LIQUIDATED DAMAGES
108-2	WORK ALLOWED PRIOR TO ISSUANCE OF WORK ORDER
210-1	UNCLASSIFIED EXCAVATION
303-1	AGGREGATE BASE COURSE
306-1	QUALITY CONTROL AND ACCEPTANCE
400-1	TACK COATS
400-4	DESIGN AND QUALITY CONTROL OF ASPHALT MIXTURES
400-5	PERCENT AIR VOIDS FOR ACHM MIX DESIGNS
400-6	LIQUID ANTI-STRIP ADDITIVE
400-7	TRACKLESS TACK
404-3	DESIGN OF ASPHALT MIXTURES
409-2	ASPHALT LABORATORY FACILITY
410-1	CONSTRUCTION REQUIREMENTS AND ACCEPTANCE OF ASPHALT CONCRETE PLANT MIX COURSES
410-2	DEVICES FOR MEASURING DENSITY FOR ROLLING PATTERNS
410-4	EVALUATION OF ACHM SUBLLOT REPLACEMENT MATERIAL
416-1	RECYCLED ASPHALT PAVEMENT
600-2	INCIDENTAL CONSTRUCTION
603-1	LANE CLOSURE NOTIFICATION
604-1	RETROREFLECTIVE SHEETING FOR TRAFFIC CONTROL DEVICES IN CONSTRUCTION ZONES
604-3	TRAFFIC CONTROL DEVICES IN CONSTRUCTION ZONES (MASH)
606-1	PIPE CULVERTS FOR SIDE DRAINS
620-1	MULCH COVER
802-4	CEMENT
JOB 110826	BIDDING REQUIREMENTS AND CONDITIONS
JOB 110826	BROADBAND INTERNET SERVICE FOR ASPHALT CONCRETE PLANT
JOB 110826	BUY AMERICA - CONSTRUCTION MATERIALS
JOB 110826	CARGO PREFERENCE ACT REQUIREMENTS
JOB 110826	COLD MILLING - COUNTY PROPERTY
JOB 110826	DESIGN AND QUALITY CONTROL ASPHALT MIXTURES
JOB 110826	DISADVANTAGED BUSINESS ENTERPRISE BIDDER'S RESPONSIBILITIES
JOB 110826	FLEXIBLE BEGINNING OF WORK - CALENDAR DAY CONTRACT
JOB 110826	GOALS FOR DISADVANTAGED BUSINESS ENTERPRISE PARTICIPATION
JOB 110826	LIQUIDATED DAMAGES PROCEDURE FOR BID LETTINGS
JOB 110826	LONGITUDINAL JOINT DENSITIES FOR ACHM SURFACE COURSES
JOB 110826	MANDATORY ELECTRONIC CONTRACT
JOB 110826	MANDATORY ELECTRONIC DOCUMENT SUBMITTAL
JOB 110826	PERCENT AIR VOIDS AND NDESIGN FOR ACHM SURFACE MIX DESIGNS
JOB 110826	PLASTIC PIPE
JOB 110826	PRICE ADJUSTMENT FOR ASPHALT BINDER
JOB 110826	PRICE ADJUSTMENT FOR FUEL
JOB 110826	PROHIBITION OF CERTAIN TELECOMMUNICATIONS AND VIDEO SURVEILLANCE SERVICES OR EQUIPMENT
JOB 110826	SHORING FOR CULVERTS
JOB 110826	SOIL STABILIZATION
JOB 110826	SUBMISSION OF ASPHALT CONCRETE HOT MIX ACCEPTANCE TEST RESULTS
JOB 110826	UTILITY ADJUSTMENTS
JOB 110826	WARM MIX ASPHALT

GENERAL NOTES

- GRADE LINE DENOTES FINISHED GRADE WHERE SHOWN ON PLANS.
- ALL PIPE LINES, POWER, TELEPHONE, AND TELEGRAPH LINES TO BE MOVED OR LOWERED BY THE RESPECTIVE OWNERS AS PER AGREEMENT WITH SUCH OWNERS.
- ANY EQUIPMENT OR APPURTENANCE THAT INTERFERES WITH THE PROPOSED CONSTRUCTION AND WHICH MAY BE THE PROPERTY OF UTILITY SERVICE ORGANIZATIONS SHALL BE MOVED BY THE OWNERS UNLESS OTHERWISE PROVIDED.
- THE CONTRACTOR SHALL BE RESPONSIBLE FOR MAINTAINING U. S. MAILBOXES WITHIN THE PROJECT LIMITS IN SUCH A MANNER THAT THE PUBLIC MAY RECEIVE CONTINUED MAIL SERVICE. PAYMENT WILL BE CONSIDERED INCLUDED IN THE PRICE BID FOR THE VARIOUS BID ITEMS.
- ALL LAND MONUMENTS LOCATED WITHIN THE CONSTRUCTION AREA SHALL BE PROTECTED IN ACCORDANCE WITH SECTION 107.12 OF THE STANDARD SPECIFICATIONS.
- ALL TREES THAT DO NOT DIRECTLY INTERFERE WITH THE PROPOSED CONSTRUCTION SHALL BE SPARED AS DIRECTED BY THE ENGINEER. CARE AND DISCRETION SHALL BE USED TO ENSURE THAT ALL TREES NOT TO BE REMOVED SHALL BE HARMED AS LITTLE AS POSSIBLE DURING THE CONSTRUCTION OPERATIONS.
- THE CONTRACTOR SHALL BE RESPONSIBLE FOR PROVIDING A FENCE TO CONTROL LIVESTOCK IN AREAS WHERE PASTURES ARE SEVERED. WIRE FENCE MAY BE CONSTRUCTED INITIALLY, OR IN LIEU THEREOF, THE CONTRACTOR AT HIS OWN EXPENSE, MAY ELECT TO PROVIDE TEMPORARY FENCING SUITABLE TO CONTAIN LIVESTOCK.
- THE SEQUENCE AS SHOWN ON THE MAINTENANCE OF TRAFFIC PLANS IS A GENERAL OUTLINE FOR THE CONSTRUCTION OF THIS PROJECT, AND IN NO WAY IS IT INTENDED TO COVER EVERY ITEM IN THE PROJECT. ITEMS NOT CRITICAL TO THE CONSTRUCTION SEQUENCE MAY BE CONSTRUCTED IN ANY STAGE AS APPROVED BY THE RESIDENT ENGINEER.
- ALL FLEXIBLE BASE AND ASPHALTIC PAVEMENTS REMOVED SHALL BE PAID FOR UNDER THE ITEM NO. 210 - UNCLASSIFIED EXCAVATION.
- THE EXISTING ASPHALT PAVEMENT TO BE REMOVED FROM THE REMAINING PAVEMENT SHALL BE SEPARATED BY SAWING ALONG A NEAT LINE. AFTER SAWING, THE PAVEMENT TO BE REMOVED SHALL BE CAREFULLY REMOVED IN A MANNER THAT WILL NOT DAMAGE THE PAVEMENT THAT IS TO REMAIN. ANY DAMAGE OF THE ASPHALT PAVEMENT THAT IS TO REMAIN IN PLACE SHALL BE REPAIRED AT THE CONTRACTOR'S EXPENSE.
- THIS PROJECT IS COVERED UNDER A SECTION 404 NATIONWIDE 14 PERMIT. REFER TO SECTION 110 OF THE STANDARD SPECIFICATIONS, EDITION OF 2014, FOR PERMIT REQUIREMENTS.



DATE REVISED	DATE REVISED	FED. RD. DIST. NO.	STATE	JOB NO.	SHEET NO.	TOTAL SHEETS
6/12/2024		6	ARK.	110826	15	28
QUANTITIES						



REMOVAL AND DISPOSAL OF CULVERTS

STATION	DESCRIPTION	PIPE CULVERTS
		EACH
101+10	42 L.F. 24" RCP	1
TOTAL:		1

NOTE: QUANTITIES SHOWN ABOVE SHALL INCLUDE REMOVAL & DISPOSAL OF ALL HEADWALLS AND FLARED END SECTIONS IF APPLICABLE.

EARTHWORK

STATION	STATION	LOCATION / DESCRIPTION	UNCLASSIFIED EXCAVATION	COMPACTED EMBANKMENT	SOIL STABILIZATION
			CU. YD.		
100+00.00	102+12.73	HWY. 17	536	212	
565+14.23	566+49.62	HWY. 70	449	8	
100+35.00	101+69.00	HWY. 17 - ADD. ASPHALT REMOVAL TO BE USED IF AND WHERE DIRECTED BY THE ENGINEER	106		50
TOTALS:			1091	220	50

NOTE: EARTHWORK QUANTITIES SHALL BE PAID AS PLAN QUANTITY.

* QUANTITY ESTIMATED. SEE SECTION 104.03 OF THE STD. SPECS.

REMOVAL AND DISPOSAL OF ITEMS

STATION	STATION	LOCATION	ASPHALT PAVEMENT
			SQ. YD.
100+35	101+69	LT OF NEW HWY. 17	222
100+74	101+09	RT OF NEW HWY. 17	55
101+19	101+63	RT OF NEW HWY. 17	70
TOTAL:			347

DRIVEWAYS & TURNOUTS

STATION	SIDE	LOCATION	WIDTH	ACHM SURFACE COURSE (1/2") 220 LBS. PER SQ. YD. (PG 64-22)		AGGREGATE BASE COURSE (CLASS 7)	SIDE DRAINS	STANDARD DRAWINGS
			FEET	SQ. YD.	TON		24" LIN. FT.	
99+18	RT	HWY. 17	16	37.01	4.07	28.18	30	DR-2, PCC-1, PCM-1, PCP-1, PCP-2, PCP-3
99+61	LT	HWY. 17	16	37.01	4.07	24.45	28	DR-2, PCC-1, PCM-1, PCP-1, PCP-2, PCP-3
101+10	RT	HWY. 17	16	45.90	5.05	18.74		DR-2
101+10 A	RT	HWY. 17	16	37.01	4.07	28.18	32	DR-2, PCC-1, PCM-1, PCP-1, PCP-2, PCP-3
101+10 B	RT	HWY. 17	16	71.34	7.85	45.93	32	DR-2, PCC-1, PCM-1, PCP-1, PCP-2, PCP-3
* ENTIRE PROJECT TEMPORARY DRIVES						50.00		
TOTALS:				228.27	25.11	195.48	122	

BASIS OF ESTIMATE:
ACHM SURFACE COURSE (1/2").....94.8% MIN. AGGR.....5.2% ASPHALT BINDER

* QUANTITY ESTIMATED. SEE SECTION 104.03 OF THE STD. SPECS. TO BE USED IF AND WHERE DIRECTED BY THE ENGINEER.

ASPHALT CONCRETE PATCHING FOR MAINTENANCE OF TRAFFIC

LOCATION	TON	TACK COAT
		GALLON
ENTIRE PROJECT - TO BE USED IF AND WHERE DIRECTED BY THE ENGINEER	5	10
TOTALS:	5	10

BASIS OF ESTIMATE:
ASPHALT CONCRETE PATCHING FOR MAINTENANCE OF TRAFFIC...25 TON/MILE
TACK COAT FOR MAINTENANCE OF TRAFFIC.....50 GAL./MILE

4" PIPE UNDERDRAIN

STATION	STATION	LOCATIONS	4" PIPE UNDERDRAINS	UNDERDRAIN OUTLET PROTECTORS
			LIN. FT.	EACH
* ENTIRE PROJECT TO BE USED IF AND WHERE DIRECTED BY THE ENGINEER			225	2
TOTALS:			225	2

* NOTE: QUANTITY ESTIMATED. SEE SECTION 104.03 OF THE STD. SPECS.

STRUCTURES

STATION	DESCRIPTION	PIPE CULVERT ALTERNATES		FLARED END SECTION ALTERNATES FOR PIPE CULVERT ALTERNATES	SOLID SODDING	WATER	STD. DWG. NOS.
		ALT. 1 (CLASS III)	ALT. 2, 3, AND 4 (WITH CLASS III ALT. 1)				
		29"X18"	28"X20"				
101+30	NEW HWY. 17	76	76	2	16	0.20	PCC-1, PCM-1, FES-1, FES-2
TOTALS:		76	76	2	16	0.20	

BASIS OF ESTIMATE:
WATER.....12.6 GAL. / SQ. YD. OF SOLID SODDING

NOTE: FOR R.C. PIPE CULVERT INSTALLATIONS USE TYPE 3 BEDDING UNLESS OTHERWISE SPECIFIED.

NOTE: FOR C.M. PIPE CULVERT INSTALLATIONS USE TYPE 2 BEDDING UNLESS OTHERWISE SPECIFIED.

DATE REVISED	DATE REVISED	FED. RD. DIST. NO.	STATE	JOB NO.	SHEET NO.	TOTAL SHEETS
6/12/2024		6	ARK.	110826	17	28
SUMMARY OF QUANTITIES AND REVISIONS						



SUMMARY OF QUANTITIES

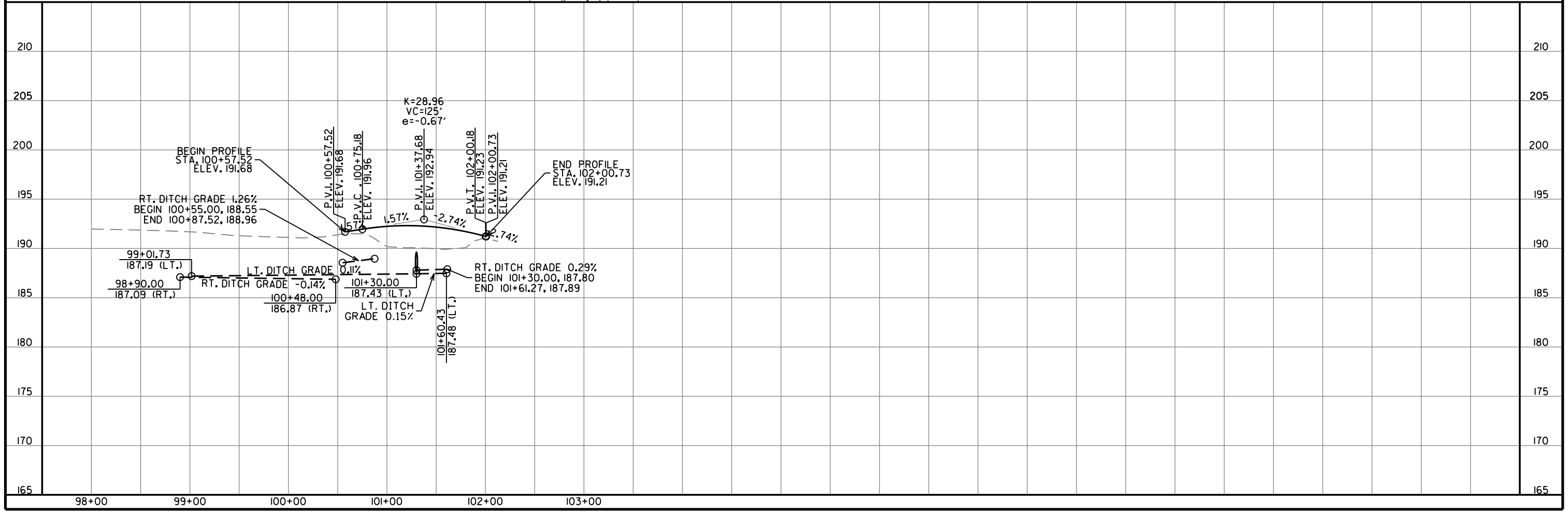
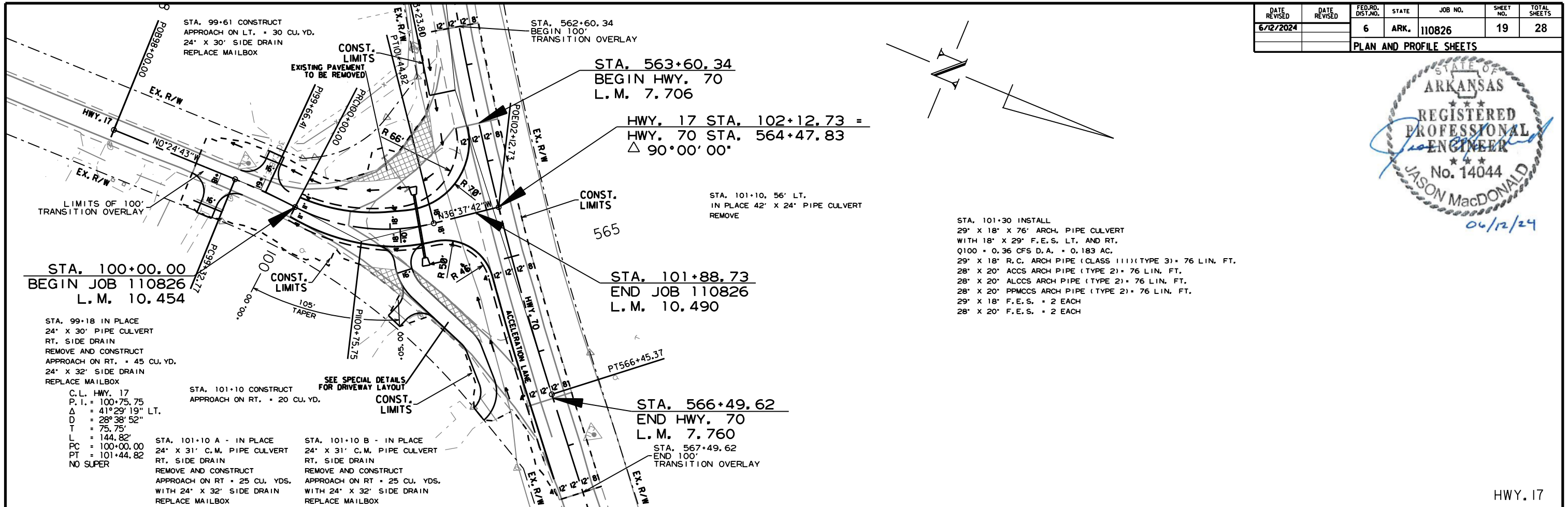
ITEM NUMBER	ITEM	QUANTITY	UNIT
202	REMOVAL AND DISPOSAL OF ASPHALT PAVEMENT	347	SQ. YD.
202	REMOVAL AND DISPOSAL OF PIPE CULVERTS	1	EACH
SP. SS. & 210	UNCLASSIFIED EXCAVATION	1091	CU. YD.
SP & 210	COMPACTED EMBANKMENT	220	CU. YD.
SP & 210	SOIL STABILIZATION	50	TON
SP. SS. & 303	AGGREGATE BASE COURSE (CLASS 7)	815	TON
SS & 401	TACK COAT	503	GAL.
SP. SS. & 406	MINERAL AGGREGATE IN ACHM BINDER COURSE (1")	192	TON
SP. SS. & 406	ASPHALT BINDER (PG 64-22) IN ACHM BINDER COURSE (1")	8	TON
SP. SS. & 407	MINERAL AGGREGATE IN ACHM SURFACE COURSE (1/2")	595	TON
SP. SS. & 407	ASPHALT BINDER (PG 64-22) IN ACHM SURFACE COURSE (1/2")	33	TON
SP & 412	COLD MILLING ASPHALT PAVEMENT	936	SQ. YD.
SP. SS. & 414	ASPHALT CONCRETE PATCHING FOR MAINTENANCE OF TRAFFIC	5	TON
601	MOBILIZATION	1.00	LUMP SUM
SS & 603	MAINTENANCE OF TRAFFIC	1.00	LUMP SUM
SS & 604	SIGNS	213	SQ. FT.
SS & 604	BARRICADES	184	LIN. FT.
SS & 604	TRAFFIC DRUMS	24	EACH
604	CONSTRUCTION PAVEMENT MARKINGS	950	LIN. FT.
SS & 604	VERTICAL PANELS	24	EACH
* SS & 606	29" X 18" REINFORCED CONCRETE ARCH PIPE CULVERTS (CLASS III) (ALTERNATE NO. 1)	76	LIN. FT.
* SS & 606	28" X 20" ASPHALT COATED CORRUGATED STEEL ARCH PIPE CULVERTS (16 GAUGE) (ALTERNATE NO. 2)	76	LIN. FT.
* SS & 606	28" X 20" ALUMINUM COATED CORRUGATED STEEL ARCH PIPE CULVERTS (16 GAUGE) (ALTERNATE NO. 3)	76	LIN. FT.
* SS & 606	28" X 20" POLYMER PRECOATED METALLIC COATED CORRUGATED STEEL ARCH PIPE CULVERT (16 GAUGE) (ALTERNATE NO. 4)	76	LIN. FT.
* SS & 606	29" X 18" FLARED END SECTIONS FOR REINFORCED CONCRETE ARCH PIPE CULVERTS (ALTERNATE NO. 1)	2	EACH
* SS & 606	28" X 20" FLARED END SECTIONS FOR CORRUGATED STEEL ARCH PIPE CULVERT (ALTERNATE NO. 2)	2	EACH
SP. SS. & 606	24" SIDE DRAIN	122	LIN. FT.
SS & 606	SELECTED PIPE BEDDING	10	CU. YD.
SS & 611	4" PIPE UNDERDRAINS	225	LIN. FT.
SS & 611	UNDERDRAIN OUTLET PROTECTORS	2	EACH
620	LIME	1	TON
620	SEEDING	0.65	ACRE
SS & 620	MULCH COVER	0.69	ACRE
620	WATER	67.3	M. GAL.
621	TEMPORARY SEEDING	0.04	ACRE
621	SILT FENCE	913	LIN. FT.
621	SAND BAG DITCH CHECKS	66	BAG
621	SEDIMENT REMOVAL AND DISPOSAL	37	CU. YD.
623	SECOND SEEDING APPLICATION	0.65	ACRE
624	SOLID SODDING	16	SQ. YD.
635	ROADWAY CONSTRUCTION CONTROL	1.00	LUMP SUM
637	MAILBOXES	4	EACH
637	MAILBOX SUPPORTS (SINGLE)	4	EACH
719	THERMOPLASTIC PAVEMENT MARKING WHITE (6")	1747	LIN. FT.
719	THERMOPLASTIC PAVEMENT MARKING WHITE (12")	30	LIN. FT.
719	THERMOPLASTIC PAVEMENT MARKING YELLOW (6")	1496	LIN. FT.
721	RAISED PAVEMENT MARKERS (TYPE II)	10	EACH

* DENOTES ALTERNATE BID ITEMS.

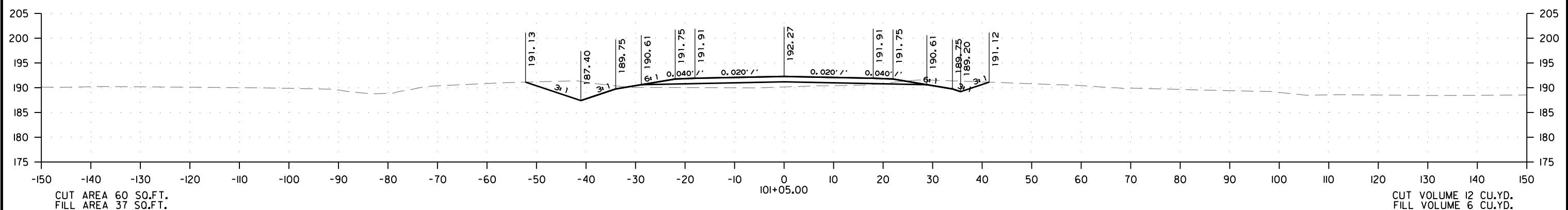
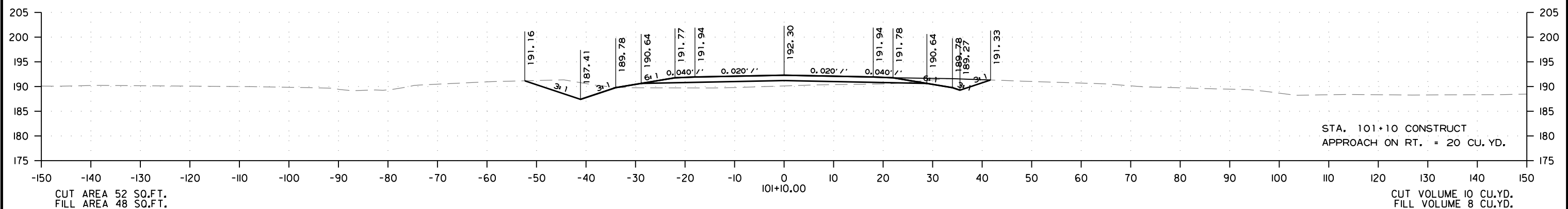
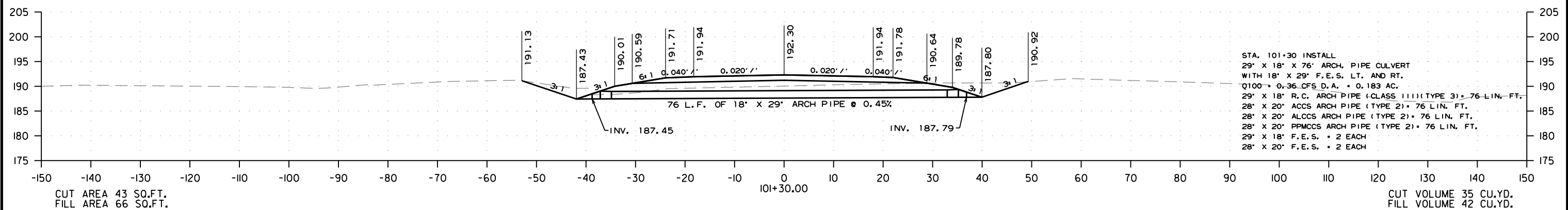
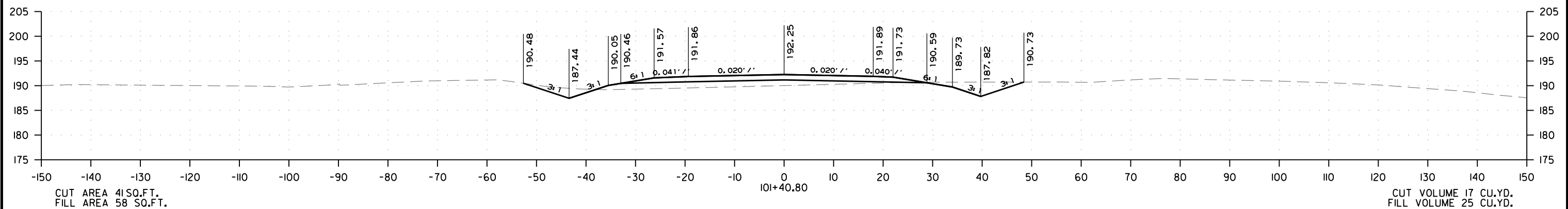
REVISIONS

DATE	REVISION	SHEET NUMBER
6/12/2024	ADDED SS-102-3 "PREQUALIFICATION OF BIDDERS" TO THE GOVERNING SPECIFICATIONS LIST, REMOVED "REINFORCED CONCRETE PIPE CULVERT (CLASS III)" COLUMN FORM STRUCTURES TABLE, REMOVED DUPLICATE ITEMS FOR ARCH PIPES & F.E.S. AND ADDED REVISION NOTES, AND UPDATED CULVERT CONSTRUCTION NOTE FOR CULVERT AT STA. 101+30 TO INCLUDE ALTERNATE PIPES & ALTERNATE F.E.S.	3, 15, 17, 19, & 24

DATE REVISED	DATE REVISION	FED. RD. DIST. NO.	STATE	JOB NO.	SHEET NO.	TOTAL SHEETS
6/12/2024		6	ARK.	110826	19	28
PLAN AND PROFILE SHEETS						



DATE REVISED	DATE REVISED	FED. RD. DIST. NO.	STATE	JOB NO.	SHEET NO.	TOTAL SHEETS
6/12/2024		6	ARK.	110826	24	28
CROSS SECTIONS						



HWY. 17 - CROSS SECTION STA. 101+05.00 TO STA. 101+40.80