

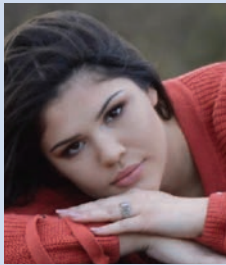
# THE 2018 GRADUATES



## CONGRATULATIONS

TO ALL OF THE FAMILY MEMBERS OF ARDOT EMPLOYEES WHO GRADUATED FROM HIGH SCHOOL AND COLLEGE THIS SPRING.





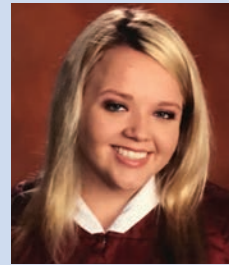
**RAMISSA LEEANN ACOSTA**  
East Poinsett County High School  
Daughter of **Chancie Acosta**  
District 10



**ASHTYN ADAMS**  
Van Buren High School  
Daughter **Chad Adams**  
District 4



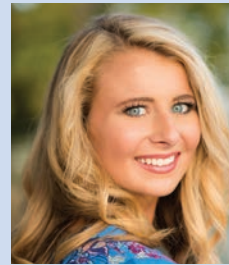
**GRACE ARCHER**  
Bergman High School  
Daughter of **Mitchell & Michele Archer**  
District 9



**NATALIE ATKINS**  
Benton High School  
Granddaughter of **Pat Brown**  
Arkansas Highway Police



**DAVID CADE BAILEY**  
Salem High School  
Son of **David Bailey**  
District 5



**MADELINE GRACE BENNETT**  
Little Rock Christian Academy  
Daughter of **Scott & Heather Bennett**  
Director's Office



**GUNNER HARRELL**  
Wynne High School  
Son of **Billie Harrell**  
District 1



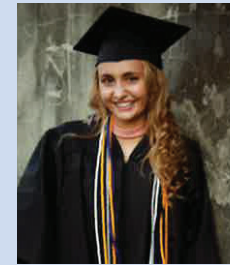
**KOLE HORNE**  
University of AR at Fort Smith  
Son of **Billy Horne**  
District 4



**DALTON HULETT**  
Hope High School  
Son of **Phillip E. Russell**  
Arkansas Highway Police



**WILL & SALEM JACKSON**  
Bentonville High School  
Son & Daughter of **Jessica S. Jackson**  
Deputy Director & Chief Engineer's Office



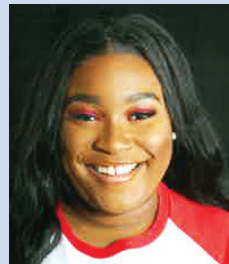
**MADDISON JONES**  
Hampton High School  
Daughter of **Lowell Jones**  
District 7



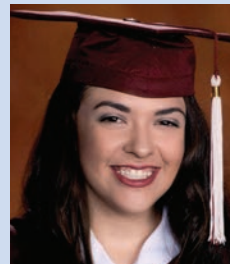
**JAMES KEITH LASITER**  
Hermitage High School  
Grandson of **Ken Thornton**  
District 7



**TY BLUE**  
Spring Hill High School  
Son of **Rochelle D. Blue**  
District 3



**BRIANNA BOBO**  
Parkview Magnet High School  
Granddaughter of **Lonnie Murry**  
District 6



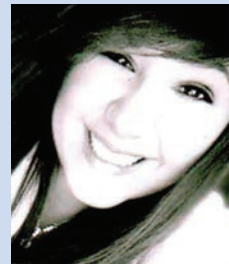
**JESSA BRYANT**  
Benton High School  
Daughter of **Patti Bryant**  
Deputy Director & Chief Engineer's Office



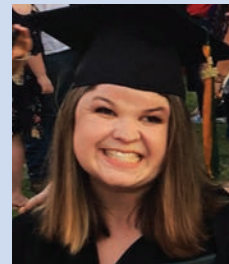
**DANYELLE BYNUM**  
Sylvan Hills High School  
Daughter of **Brian Bynum**  
Maintenance



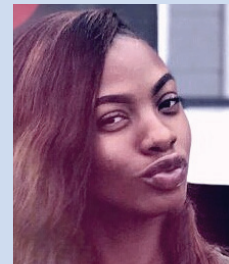
**JOSHUA CAIN**  
Searcy High School  
Son of **Bryant Cain I**  
District 2



**SCOTLIN CALHOUN**  
Rogers State University  
Daughter of **Kevin & Laura Waldon**  
District 9



**ROCHELLE ALLISON LAUMER**  
Arkansas Tech University  
Daughter of **Bud Laumer**  
Transportation Planning & Policy



**LEAH LEWIS**  
Maumelle High School  
Daughter of **Lakeysha Walker**  
Legal



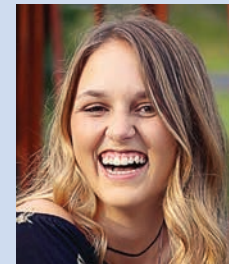
**JOSIE LOVE**  
Melbourne High School  
Daughter of **Brandon Love**  
District 5



**TORI MAFNAS**  
Arkansas State University  
Stepdaughter of **Steven Rollins**  
District 10



**TREVOR MAFNAS**  
Northeast Arkansas Community College  
Stepson of **Steven Rollins**  
District 10



**HANNAH MARTIN**  
Conway High School  
Daughter of **Chuck Martin**  
Roadway Design



**MICHAEL DEWAYNE CARLTON**  
Valley Springs High School  
Son of **Michael W. & Karla Carlton**  
District 9



**KALEI CLARK**  
Green Forest High School  
Daughter of **Ray & Kathy Clark**  
District 9



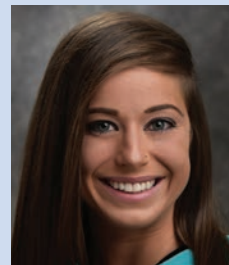
**KYLE CREPPEL**  
Des Arc High School  
Son of **Mathew & Jodie Creppel**  
District 2



**JON-WESLEY GARRETT CROWDER**  
Star City High School  
Son of **Stacy Wilkerson**  
District 2



**BLAKE DOHERTY**  
Smackover High School  
Son of **Kenneth Doherty**  
District 7



**ASHLEY ENGLISH**  
Arkansas State University  
Daughter of **Gary & Bonnie English**  
Roadway Design



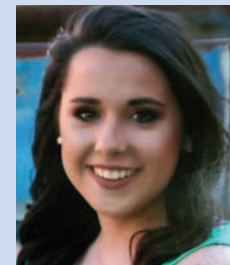
**SHI'NEZ MITCHELL**  
Marked Tree High School  
Daughter of **Kim Pugh**  
District 10



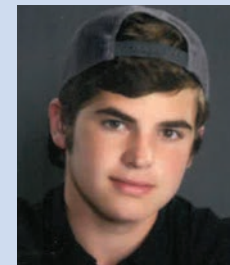
**BAYLEN MOORE**  
Sylvan Hills High School  
Son of **Carrie Moore Chudy**  
District 6



**RYAN ERET MOXLEY**  
Melbourne High School  
Son of **Jared Eret Moxley**  
District 5



**MICHAELA ORTON**  
Fordyce High School  
Granddaughter of **Bobby Hall**  
District 7



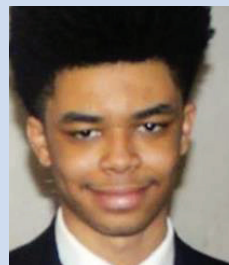
**CAMERON PRICE**  
Bryant High School  
Son of **Mandy Price**  
Maintenance



**COOPER RILEY**  
Kingston High School  
Son of **Kenny & Angela Riley**  
District 9



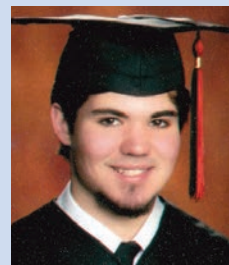
**RACHAEL EVANS**  
Green Forest High School  
Daughter of **Chris Evans**  
District 9



**RYAN EYIUCHE**  
Central High School  
Son of **Vivian Hayes**  
Computer Services



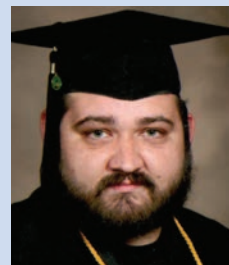
**TRISTEN FRAME**  
Beebe High School  
Son of **Charlie Frame**  
Computer Services



**COLE GILLIAM**  
Maumelle High School  
Son of **Ceburn Gilliam**  
Human Resources



**CHRIS GRAHAM**  
UALR  
Nephew of **Judy Young**  
Transportation Planning & Policy



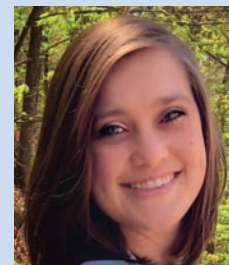
**CODY HAMM**  
Arkansas Tech University  
Son of **Esther Hamm**  
District 4



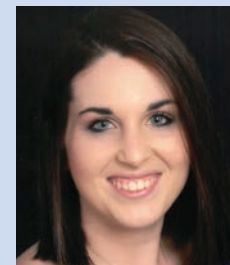
**MORGAN DANIEL ROGERS**  
Magnolia High School  
Son of **Danny Rogers**  
District 7



**ZACHARY ROLLINS**  
Greene County Tech High School  
Son of **Steven Rollins**  
District 10



**CHRISTINA MICHELLE ROWEN**  
University of Alabama  
Daughter of **Phil Rowen**  
District 7



**BAILEY SCHIMMEL**  
UALR  
Daughter of **Denise & Dale Schimmel**  
Internal Audit



**PERRI MISCELL SHAW**  
Greene County Tech High School  
Niece of **Cory Shaw**  
District 10



**COURTNEY SHERMAN**  
Boise State University  
Daughter of **Rudy Coleman**  
District 7



**AMY PARKER SMITH**  
Harding University  
Daughter of  
**Raymond Parker**  
Heavy Bridge



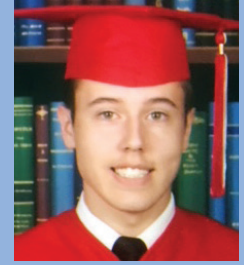
**WALLACE L. SMITH**  
Warren High School  
Son of **Vernon Smith**  
District 2



**ABBY SMITHEE**  
Paragould  
High School  
Daughter of  
**Brad Smithee**  
District 10



**DAVID "PRESTON"  
TAYLOR**  
Lonoke High School  
Son of **LynAnne Ivy**  
Environmental



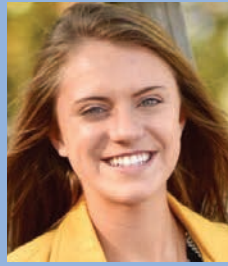
**PADEN THOMAS**  
Glen Rose  
High School  
Son of **Matthew Penix**  
Transportation Planning  
& Policy



**CALEB THORNTON**  
Bauxite High School  
Son of **Kevin &  
Cheryl Thornton**  
Deputy Director & Chief  
Engineer's Office



**MONTANA TOLLETT**  
Robinson High  
School  
Daughter of  
**Carma Tollett**  
Program Management



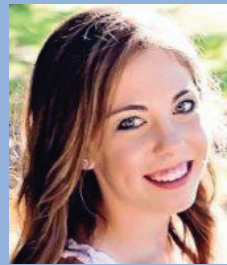
**NATALIE TONEY**  
Pocahontas  
High School  
Daughter of **Jim Toney**  
District 10



**RILEY WALDEN**  
Kingston High  
School  
Son of **Kevin &  
Laura Walden**  
District 9



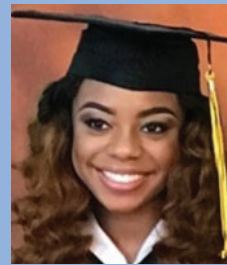
**ADRIANN WATSON**  
Valley Springs  
High School  
Daughter of **Rick Watson**  
District 9



**HANNAH WEAVER**  
Cedar Ridge  
High School  
Daughter of  
**Amie Bristow**  
District 5



**TIFFANY WEBSTER**  
Arkansas Tech  
University  
Daughter of  
**Brandon Webster**  
Maintenance



**TIA WELLS**  
Central High School  
Daughter of **Chris &  
Kenyada Wells**  
Materials



**ARKANSAS DEPARTMENT  
OF TRANSPORTATION**

P.O. Box 2261 • Little Rock, AR 72203-2261  
501.569.2000 • [www.ArDOT.gov](http://www.ArDOT.gov)