

STATE OF ARKANSAS
STATE HIGHWAY COMMISSION

FISCAL YEAR	JOB NO.	SHEET NO.	TOTAL SHEETS
1931	10-153	1	16

INDEX OF SHEETS

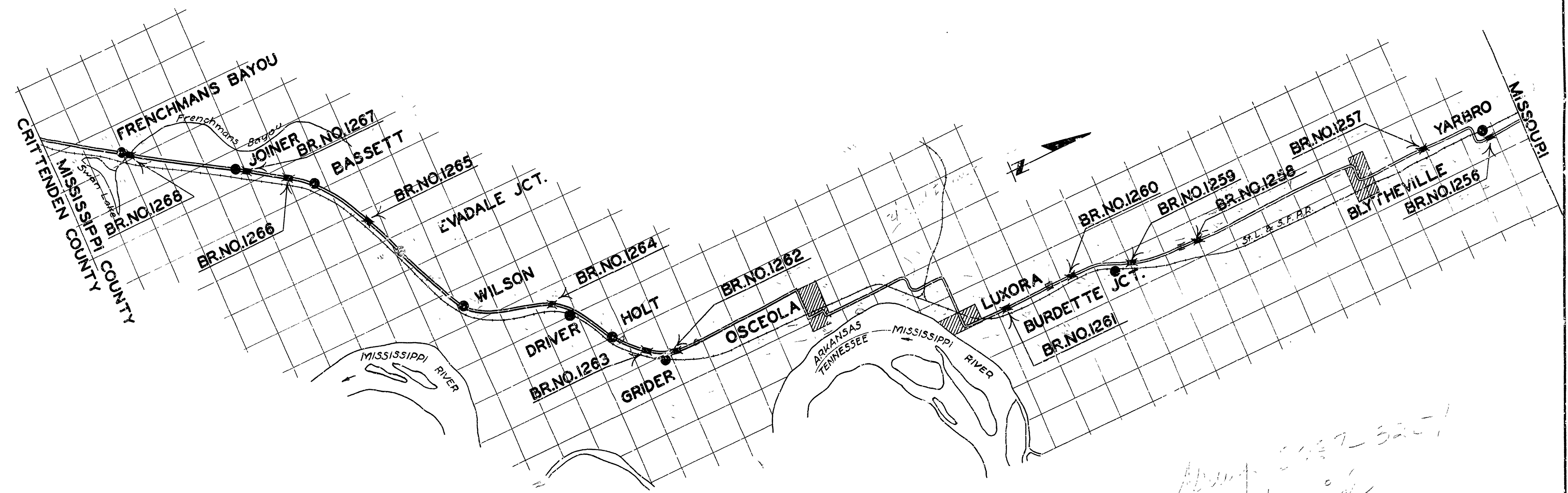
Sheet No.	DRWG No.	Title
1	3237	Title Sheet
2	3238	Layout and Details Re-Decking Bridge 1256
3	3239	" " " " " " " " 1257
4	3240	" " " " " " " " 1258
5	3241	" " " " " " " " 1259
6	3242	" " " " " " " " 1260
7	3243	" " " " " " " " 1261
8	3244	" " " " " " " " 1262
9	3245	" " " " " " " " 1263
10	3246	" " " " " " " " 1264
11	3247	Bridge 1265
12	3248	Details Substructure Bridge 1265
13	2313	Details 30'-0" R.C.D. Girder Span, 24'-0" Clear Rdwy, Superstructure Bridge 1265
14	3249	Layout and Details Re-Decking Bridge 1266
15	3250	" " " " " " " " 1267
16	3251	" " " " " " " " 1268

PLAN OF PROPOSED BRIDGES
ON
CRITTENDEN COUNTY-MISSOURI STATE LINE ROAD
MISSISSIPPI COUNTY

ROUTE 61 SEC. 2 & 3
JOB NO 10-153

QUANTITIES

Item No.	Item	Quantity	Unit
S.P. 1	Earth Excavation	85	Cu.Yds.
2	Dry Excavation for Structures	123	Cu.Yds.
13	Wet Excavation for Structures	216	Cu.Yds.
S.P. 52	Untreated Timber Piling	768	Lin.Ft.
54	Class "A" Concrete	92.70	Cu.Yds.
54	Class "S" Concrete	536.05	Cu.Yds.
55	Reinforcing Steel	130,634	Lbs.
69	Rip Rap (1ft. thick)	81	Cu.Yds.
74	Concrete Railing for Structures	186	Lin.Ft.
S.P.	Reconditioning Existing Structures	Lump Sum	



The Specifications adopted by the State Highway Commission, May 30th, 1925 apply with subsequent revisions and Special Provisions noted apply to this Project.

Pamphlet	Revised	Effective Date
A	Sept. 1st, 1920	
B	July 1st, 1930	
C	July 1st, 1930	
D	July 1st, 1928	
E	Jan. 1st, 1930	
F	Aug. 1st, 1929	
G	June 1st, 1929	
H	Oct. 1st, 1928	
I	May 30th, 1925	
J	Jan. 1st, 1929	
K	May 30th, 1925	
L	Jan. 1st, 1929	
M	Jan. 1st, 1931	

SPECIAL PROVISIONS

Item	No. of Sheets
Pamphlet M	51
Bridge Timber	12
Earth Excavation	3
Concrete Aggregate	2
Rip Rap	1
Aluminium Paint	1
Section 8.2	1
Contractor Furnish All Material	1
Reconditioning Existing Structures	2
High Early Strength Cement	1

LAYOUT
Scale: 3/4" = 1 Mi.

LENGTH OF JOB = 924'-7" = 0.175 Mi.
LENGTH OF BRIDGES = 904'-7"
LENGTH OF EMBANKMENT = 20'-0"

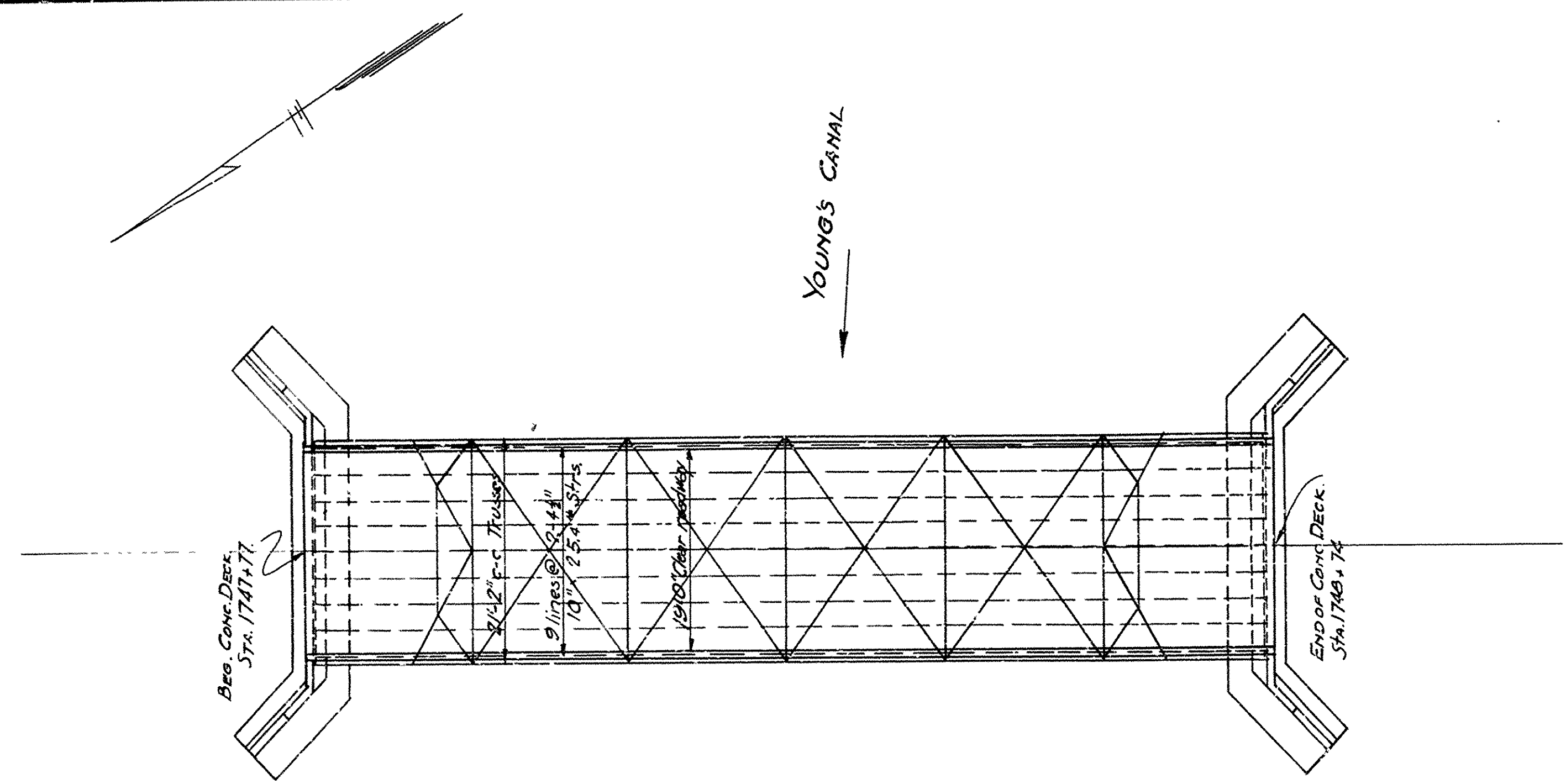
Handwritten note: About 3247-3251

APPROVED [Signature] CHAIRMAN - STATE HIGHWAY COMMISSION

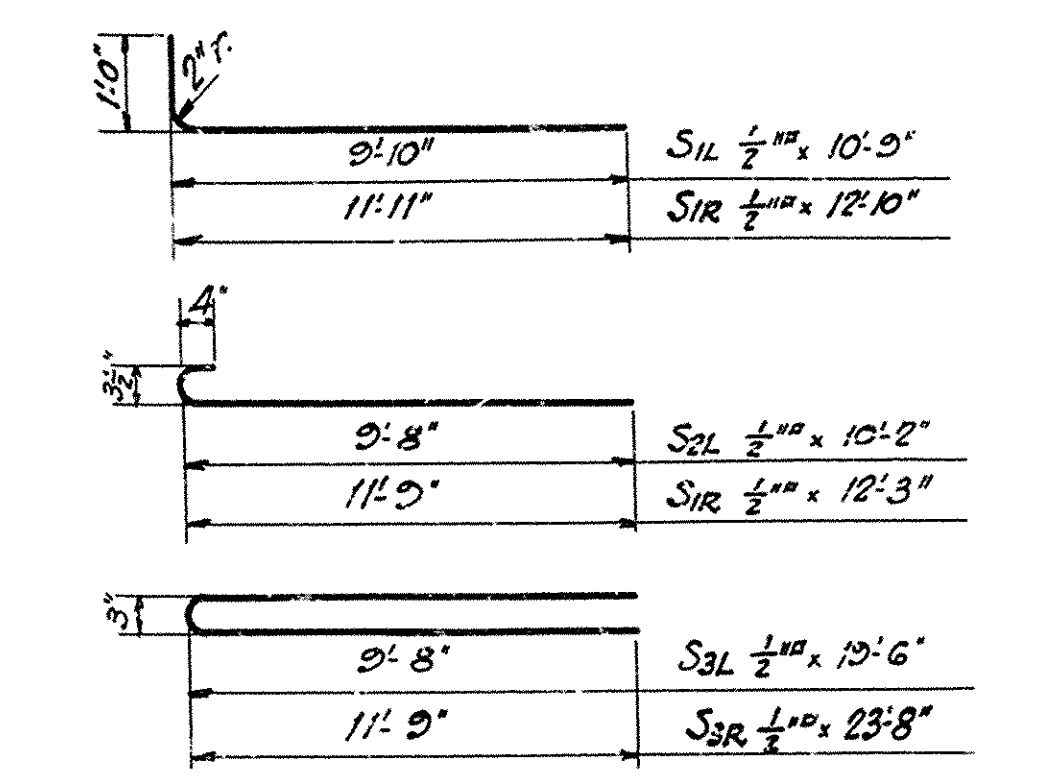
APPROVED [Signature] STATE HIGHWAY ENGINEER

BRIDGE ENGINEER BRIDGES NO. 1256 to 1268 Incl. DRAWING NO. 3237

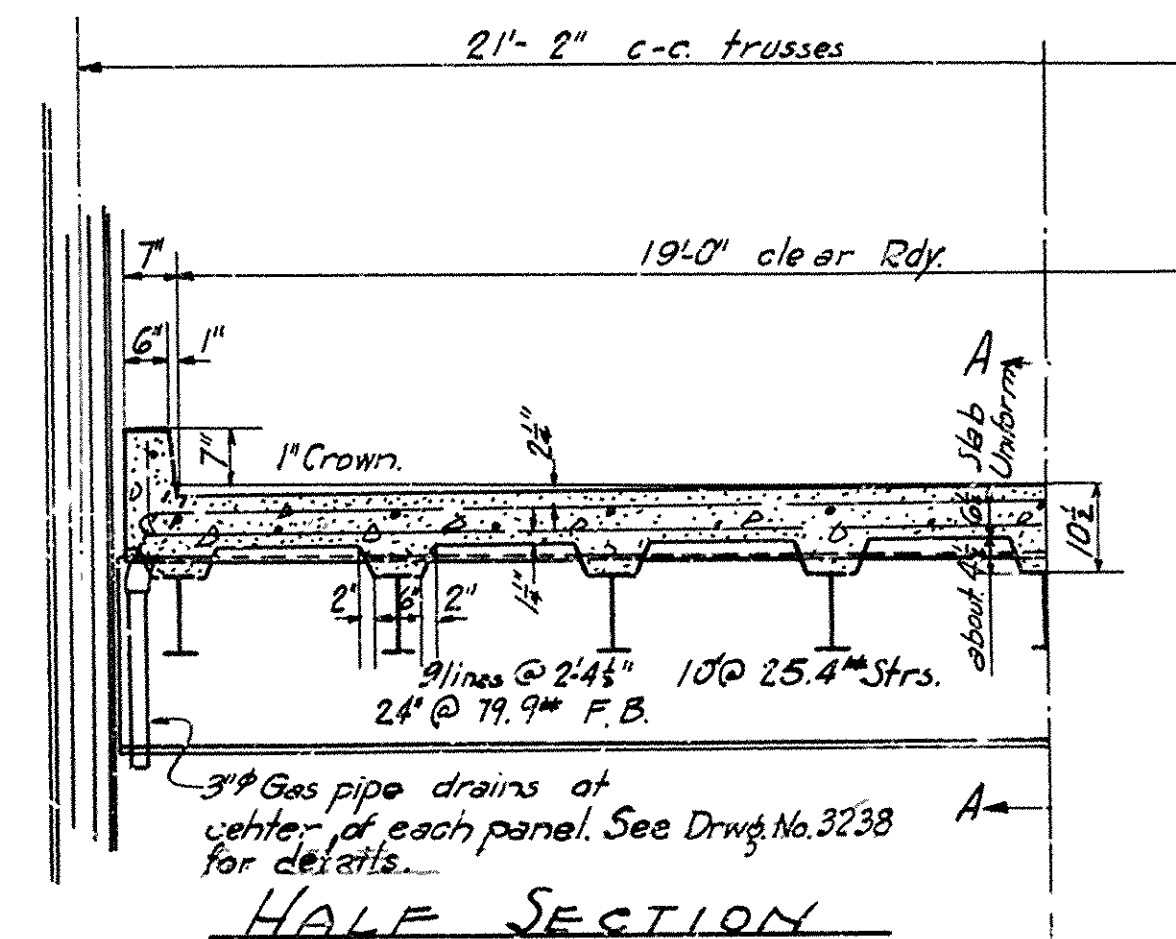
FISCAL YEAR	Job No.	SHEET NO.	TOTAL SHEETS
1931	10-153	10	16



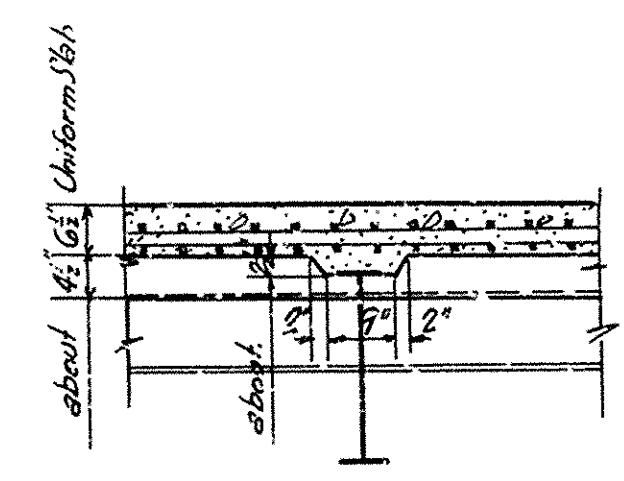
PLAN



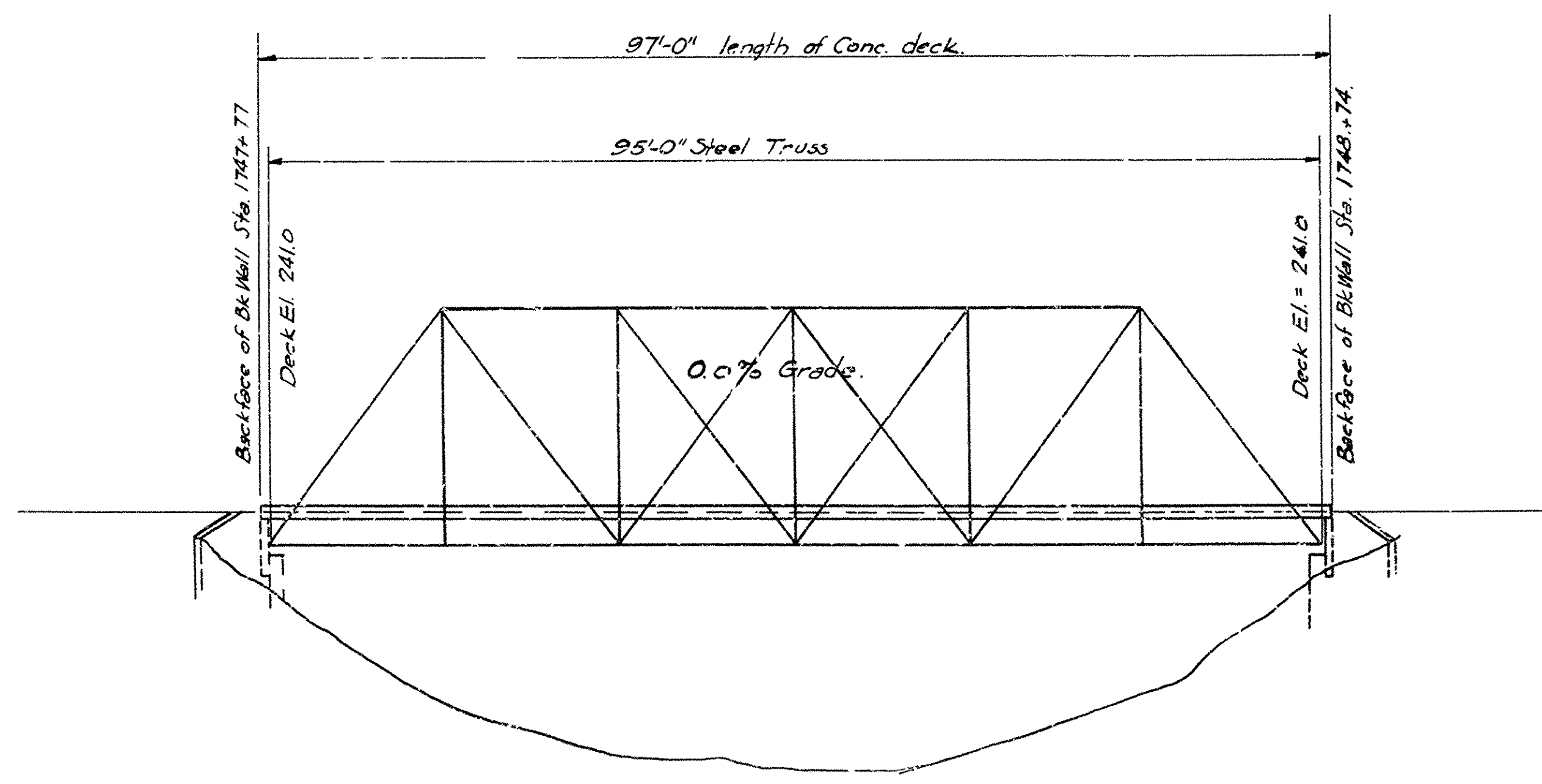
REINFORCING STEEL:
 Trans. bars S1L & S1R 1/2" @ 10' cfs. bot. of slab.
 " " S2L & S2R 1/2" @ 10" top of slab.
 " " S3L & S3R 1/2" @ 10" top & bot. of slab.
 Long bars S4 1/2" spaced as shown.



HALF SECTION



SEC. A-A



ELEVATION

Notes:
 Existing bridge 95' steel truss, 19'-0" clear roadway; 1" timber deck without wearing surface to be removed.
 Repair cracked walls at both abutments.
 Structural steel to be thoroughly cleaned and painted with two (2) coats of aluminum paint.
 Clean and grease expansion shoes of trusses.
 Replace timber deck with 6" concrete slab.
 Traffic to be maintained during construction. See sketch on Drwg. No. 3238 for method.
 All concrete to be class "S".
 All exposed corners to have a 3" chamfer.
 Reinforcing steel to be deformed bars of structural or intermediate grade.
 Shop lists and bending diagrams must be submitted and approved before fabrication is begun.
 Roadway drains are to be paid for at the unit price bid for reinforcing steel.
 Specifications: Arkansas Standard Road & Bridge Specifications, Adopted May 30, 1925 and Revised with special provisions as listed on title sheet.

QUANTITIES

Item No. 54	Class "S" Concrete	40.46 Cu. Yds.
" "	55 Reinforcing Steel	10316 Lbs.
" "	S.P. Reconditioning Existing Str.	LUMP SUM

LAYOUT OF
 BRIDGE OVER YOUNG'S CANAL
 0.9 MI. SOUTH OF DRIVER
 NORTH 1/4 SOUTH ROAD
 MISSISSIPPI COUNTY
 ROUTE 61 SEC. 2

ARKANSAS STATE HIGHWAY COMMISSION
 LITTLE ROCK, ARK.

Drawn By: EAW Date: 5-20-31
 Traced By: EMM Date: 5-22-31
 Checked By: EAW Date: 6-1-31

Scale: 1/4" = 10'
 1/8" = 10'

BRIDGE NO. 1264 DRAWING NO. 3246

BRIDGE ENGINEER