

DATE REVISED	DATE FILMED	DATE REVISED	DATE FILMED	FED. RD. DIST. NO.	STATE	FED. AID PROJ. NO.	SHEET NO.	TOTAL SHEETS
				6	ARK.			
						JOB NO. 040684	1	18

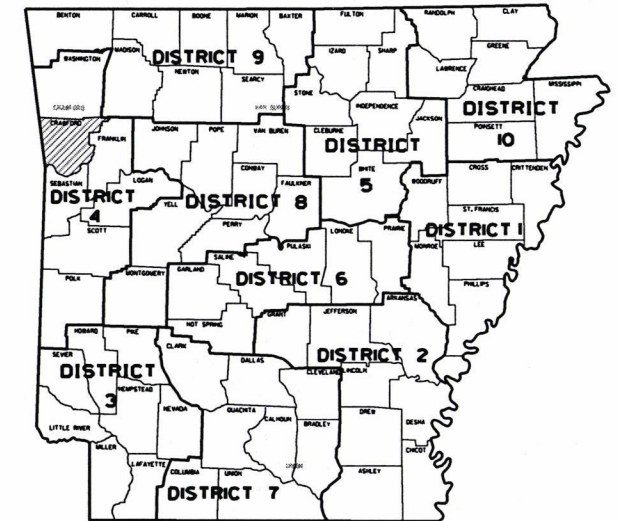
ARKANSAS DEPARTMENT OF TRANSPORTATION  
CONSTRUCTION PLANS FOR STATE HIGHWAY

**HWY. 71 & HWY. 282**  
**SIGNAL (CRAWFORD CO.) (S)**

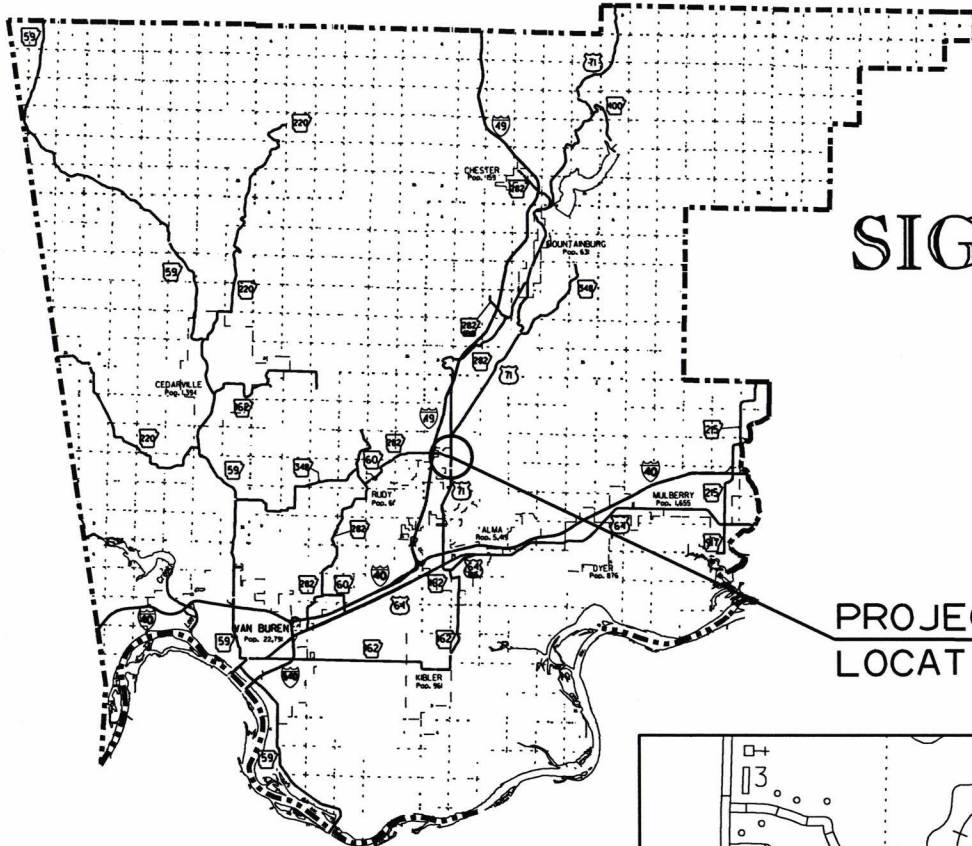
CRAWFORD COUNTY  
ROUTE 71 SECTION 15  
ROUTE 282 SECTION 1  
FED. AID PROJ. STPF-0017(39)

**JOB 040684**

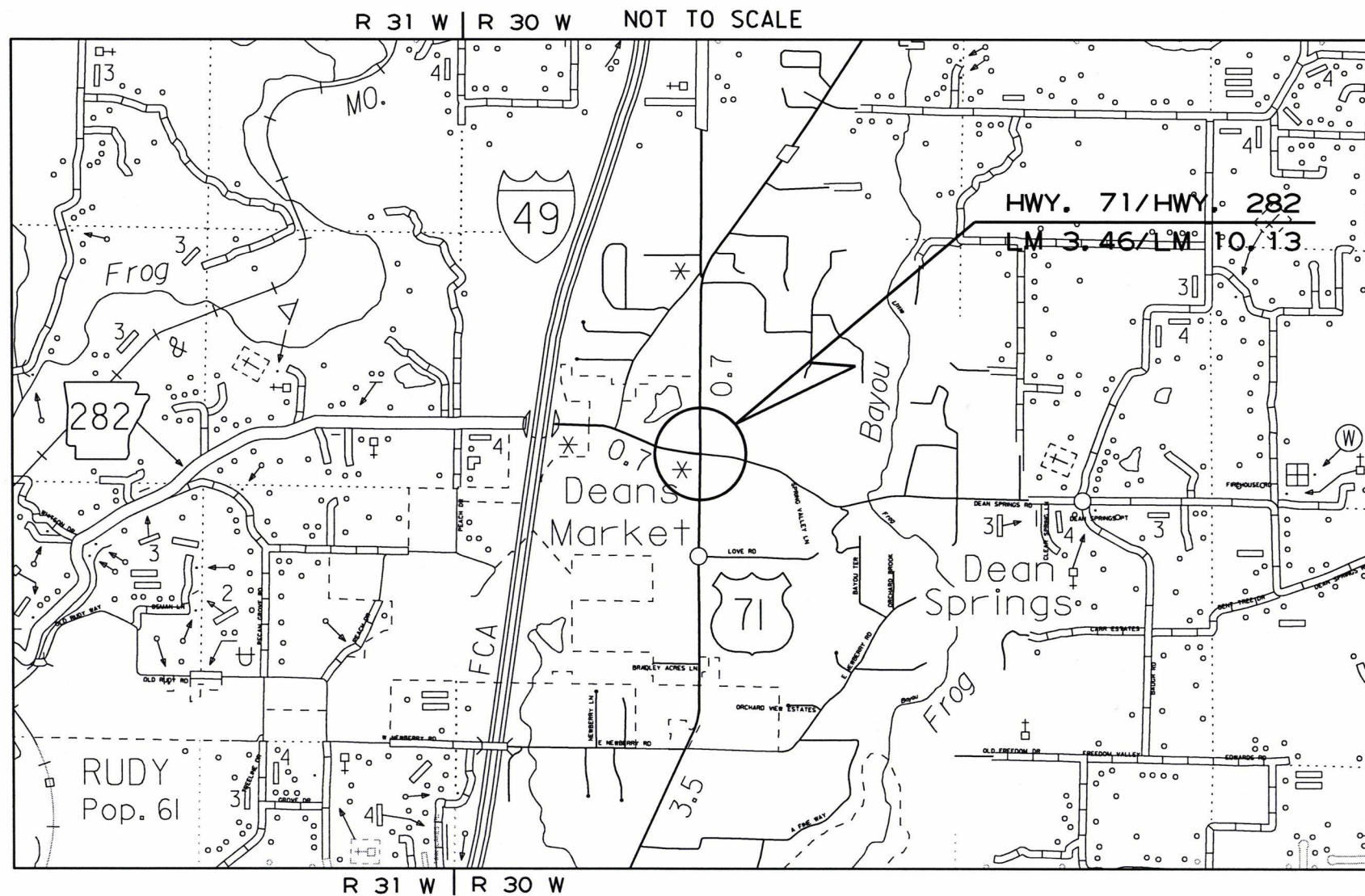
PROJECT  
LOCATION



ARK. HWY. DIST. NO. 4



VICINITY MAP



R 31 W | R 30 W NOT TO SCALE

R 31 W | R 30 W

MID-POINT OF PROJECT  
LAT. = N 35° 32' 16"  
LONG. = W 94° 13' 15"

APPROVED



2-7-18

DEPUTY DIRECTOR  
AND CHIEF ENGINEER



DATE REVISED	DATE FILMED	DATE REVISED	DATE FILMED	FED. RD. DIST. NO.	STATE	FED. AID PROJ. NO.	SHEET NO.	TOTAL SHEETS
				6	ARK.			
						040684	2	18

② INDEX OF SHEETS AND STANDARD DRAWINGS



### INDEX OF SHEETS

SHEET NO.	TITLE
1	TITLE SHEET
2	INDEX OF SHEETS AND STANDARD DRAWINGS
3	GOVERNING SPECIFICATIONS AND GENERAL NOTES
4	TEMPORARY EROSION CONTROL DETAIL
5	MAINTENANCE OF TRAFFIC DETAIL
6	PERMANENT PAVEMENT MARKING DETAIL
7	QUANTITIES
8	SUMMARY OF QUANTITIES AND REVISIONS
9 - 12	SURVEY CONTROL DETAILS
13	TRAFFIC SIGNAL NOTES
14	TRAFFIC SIGNAL QUANTITIES
15 - 18	SIGNALIZATION PLAN SHEETS

### ROADWAY STANDARD DRAWINGS

DRWG.NO.	TITLE	DATE
PM-1	PAVEMENT MARKING DETAILS	06-01-17
SD-5	CONTROLLER CABINET UTILITY DRAWER	09-12-13
SD-6	HEAVY DUTY PULL BOX	11-16-17
SD-8	SIGNAL HEAD PLACEMENT	12-08-16
SD-9	SERVICE POINT	11-16-17
SD-11	STEEL POLE WITH MAST ARM	11-16-17
TC-1	STANDARD TRAFFIC CONTROLS FOR HIGHWAY CONSTRUCTION	04-13-17
TC-2	STANDARD TRAFFIC CONTROLS FOR HIGHWAY CONSTRUCTION	09-02-15
TC-3	STANDARD TRAFFIC CONTROLS FOR HIGHWAY CONSTRUCTION	09-02-15
TEC-1	TEMPORARY EROSION CONTROL DEVICES	11-16-17

LOCATION: HWY. 71 / HWY. 282  
 CITY: N/A  
 COUNTY: CRAWFORD  
 DISTRICT: 4    SCALE: N/A    DRAWN BY: GWE

DATE REVISED	DATE FILMED	DATE REVISED	DATE FILMED	FED. DIST. NO.	STATE	FED. AID PROJ. NO.	SHEET NO.	TOTAL SHEETS
				6	ARK.			
						040684	3	18

2 GOVERNING SPECIFICATIONS AND GEN. NOTES



### GENERAL NOTES

1. ALL PIPE LINES, POWER, TELEPHONE, AND TELEGRAPH LINES TO BE MOVED OR LOWERED BY THE RESPECTIVE OWNERS AS PER AGREEMENT WITH SUCH OWNERS.
2. ANY EQUIPMENT OR APPURTENANCE THAT INTERFERES WITH THE PROPOSED CONSTRUCTION AND WHICH MAY BE THE PROPERTY OF UTILITY SERVICE ORGANIZATIONS SHALL BE MOVED BY THE OWNERS UNLESS OTHERWISE PROVIDED.
3. ALL LAND MONUMENTS LOCATED WITHIN THE CONSTRUCTION AREA SHALL BE PROTECTED IN ACCORDANCE WITH SECTION 107.12 OF THE STANDARD SPECIFICATIONS.
4. ALL TREES THAT DO NOT DIRECTLY INTERFERE WITH THE PROPOSED CONSTRUCTION SHALL BE SPARED AS DIRECTED BY THE ENGINEER. CARE AND DISCRETION SHALL BE USED TO INSURE THAT ALL TREES NOT TO BE REMOVED SHALL BE HARMED AS LITTLE AS POSSIBLE DURING THE CONSTRUCTION OPERATIONS.

### GOVERNING SPECIFICATIONS

ARKANSAS STATE HIGHWAY COMMISSION STANDARD SPECIFICATIONS FOR HIGHWAY CONSTRUCTION, EDITION OF 2014, AND THE FOLLOWING SPECIAL PROVISIONS AND SUPPLEMENTAL SPECIFICATIONS:

NUMBER	TITLE
ERRATA	ERRATA FOR THE BOOK OF STANDARD SPECIFICATIONS
FHWA-1273	REQUIRED CONTRACT PROVISIONS FEDERAL-AID CONSTRUCTION CONTRACTS
FHWA-1273	SUPPLEMENT - EQUAL EMPLOYMENT OPPORTUNITY - NOTICE TO CONTRACTORS
FHWA-1273	SUPPLEMENT - SPECIFIC EQUAL EMPLOYMENT OPPORTUNITY RESPONSIBILITIES (23 U.S.C. 140)
FHWA-1273	SUPPLEMENT - EQUAL EMPLOYMENT OPPORTUNITY - GOALS AND TIMETABLES
FHWA-1273	SUPPLEMENT - EQUAL EMPLOYMENT OPPORTUNITY - FEDERAL STANDARDS
FHWA-1273	SUPPLEMENT - POSTERS AND NOTICES REQUIRED FOR FEDERAL-AID PROJECTS
FHWA-1273	SUPPLEMENT - WAGE RATE DETERMINATION
100-3	CONTRACTOR'S LICENSE
100-4	DEPARTMENT NAME CHANGE
102-2	ISSUANCE OF PROPOSALS
108-1	LIQUIDATED DAMAGES
108-2	WORK ALLOWED PRIOR TO ISSUANCE OF WORK ORDER
604-1	RETROREFLECTIVE SHEETING FOR TRAFFIC CONTROL DEVICES IN CONSTRUCTION ZONES
JOB 040684	BIDDING REQUIREMENTS AND CONDITIONS
JOB 040684	CABINET DRAWER ASSEMBLY
JOB 040684	CARGO PREFERENCE ACT REQUIREMENTS
JOB 040684	DOCUMENTATION OF PAYMENTS MADE TO DISADVANTAGED BUSINESS ENTERPRISES
JOB 040684	EDGE CARD VIDEO PROCESSOR
JOB 040684	ELECTRICAL CONDUCTORS FOR LUMINAIRES
JOB 040684	ELECTRICAL CONDUCTORS-IN-CONDUIT
JOB 040684	LED LUMINAIRE ASSEMBLY (BUG U0 TYPE)
JOB 040684	LED TRAFFIC SIGNAL HEAD
JOB 040684	MANDATORY ELECTRONIC CONTRACT
JOB 040684	MANDATORY ELECTRONIC DOCUMENT SUBMITTAL
JOB 040684	OFF-SITE RESTRAINING CONDITIONS FOR INDIANA AND NORTHERN LONG-EARED BATS
JOB 040684	REMOVAL OF TRAFFIC SIGNAL EQUIPMENT
JOB 040684	SERVICE POINT ASSEMBLY (TRAFFIC CONTROL DEVICES)
JOB 040684	STREET NAME SIGN (MAST ARM MOUNTED)
JOB 040684	UTILITY ADJUSTMENTS
JOB 040684	VIDEO DETECTOR (COLOR)

LOCATION: HWY. 71 / HWY. 282  
 CITY: N/A  
 COUNTY: CRAWFORD  
 DISTRICT: 4 SCALE: N/A DRAWN BY: GWE

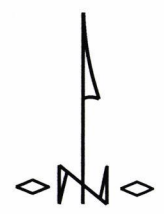
DATE: 02-06-18 FILE NAME: t040684\_job.dgn



REVISIONS	
DATE	REVISION

DATE REVISED	DATE FILMED	DATE REVISED	DATE FILMED	FED. RD. DIST. NO.	STATE	FED. AID PROJ. NO.	SHEET NO.	TOTAL SHEETS
				6	ARK.		4	18

2 TEMPORARY EROSION CONTROL DETAIL

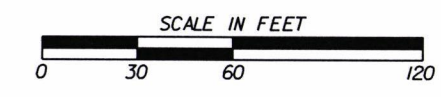
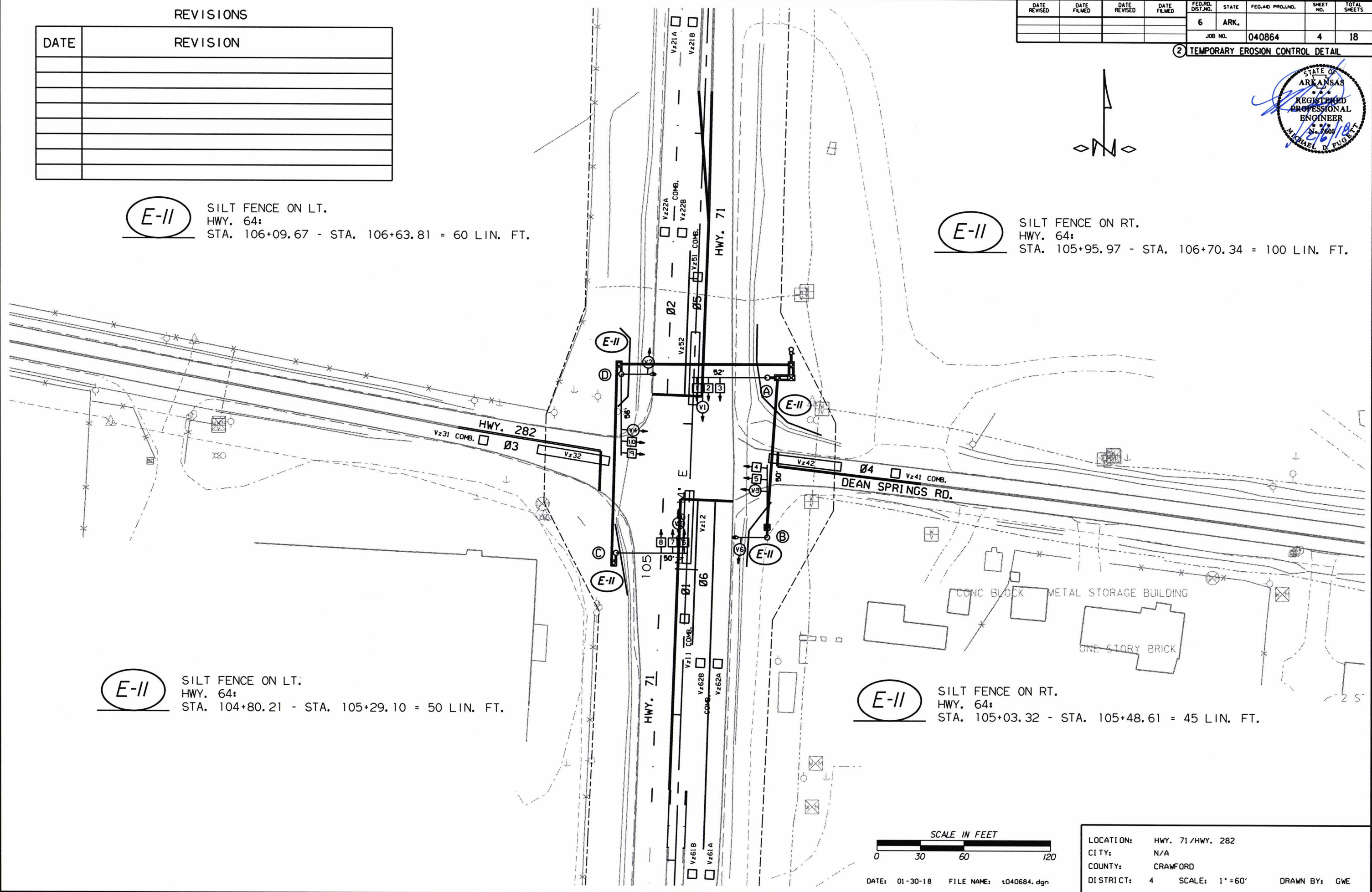


**E-II** SILT FENCE ON LT.  
 HWY. 64:  
 STA. 106+09.67 - STA. 106+63.81 = 60 LIN. FT.

**E-II** SILT FENCE ON RT.  
 HWY. 64:  
 STA. 105+95.97 - STA. 106+70.34 = 100 LIN. FT.

**E-II** SILT FENCE ON LT.  
 HWY. 64:  
 STA. 104+80.21 - STA. 105+29.10 = 50 LIN. FT.

**E-II** SILT FENCE ON RT.  
 HWY. 64:  
 STA. 105+03.32 - STA. 105+48.61 = 45 LIN. FT.



DATE: 01-30-18 FILE NAME: t040684.dgn

LOCATION:	HWY. 71/HWY. 282
CITY:	N/A
COUNTY:	CRAWFORD
DISTRICT:	4
SCALE:	1" = 60'
DRAWN BY:	GWE