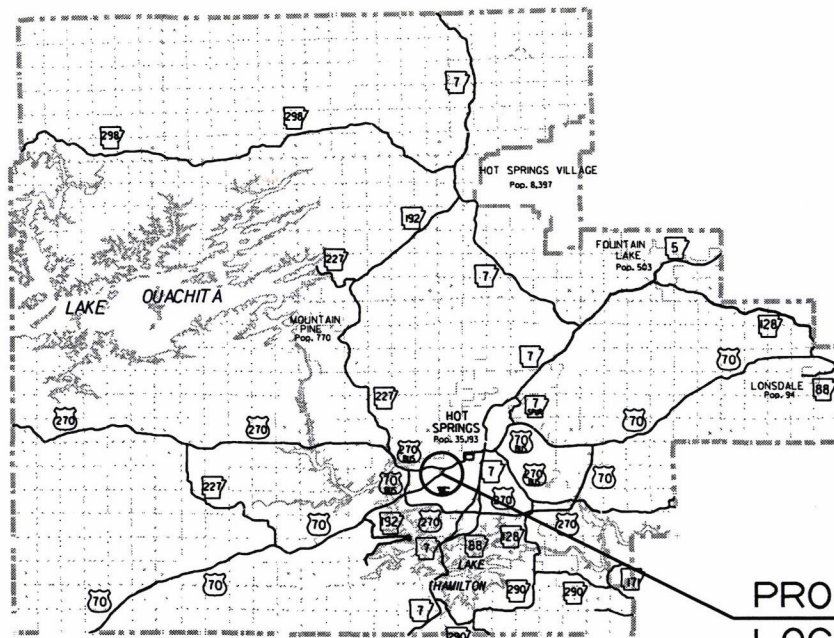


DATE REVISED	DATE FILMED	DATE REVISED	DATE FILMED	FED. RD. DIST. NO.	STATE	FED. AID PROJ. NO.	SHEET NO.	TOTAL SHEETS
				6	ARK.			
						JOB NO. 061471	1	17

② HWY. 70B/WEST ST. LOUIS SIGNAL (HOT SPRINGS) (S)



VICINITY MAP

PROJECT LOCATION

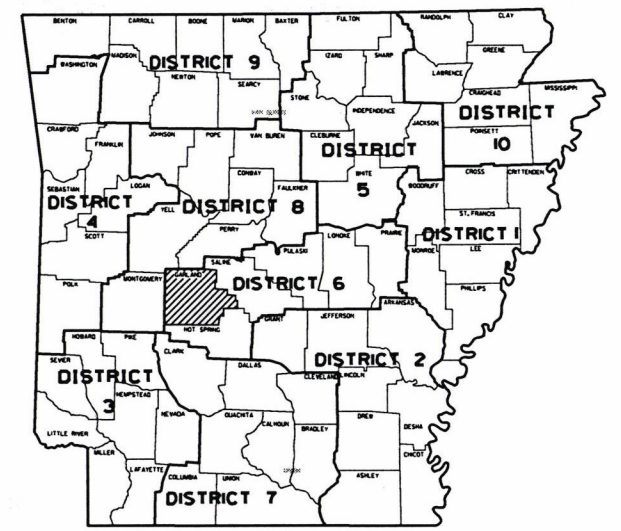
ARKANSAS DEPARTMENT OF TRANSPORTATION
CONSTRUCTION PLANS FOR STATE HIGHWAY

HWY. 70B / WEST ST. LOUIS SIGNAL (HOT SPRINGS) (S)

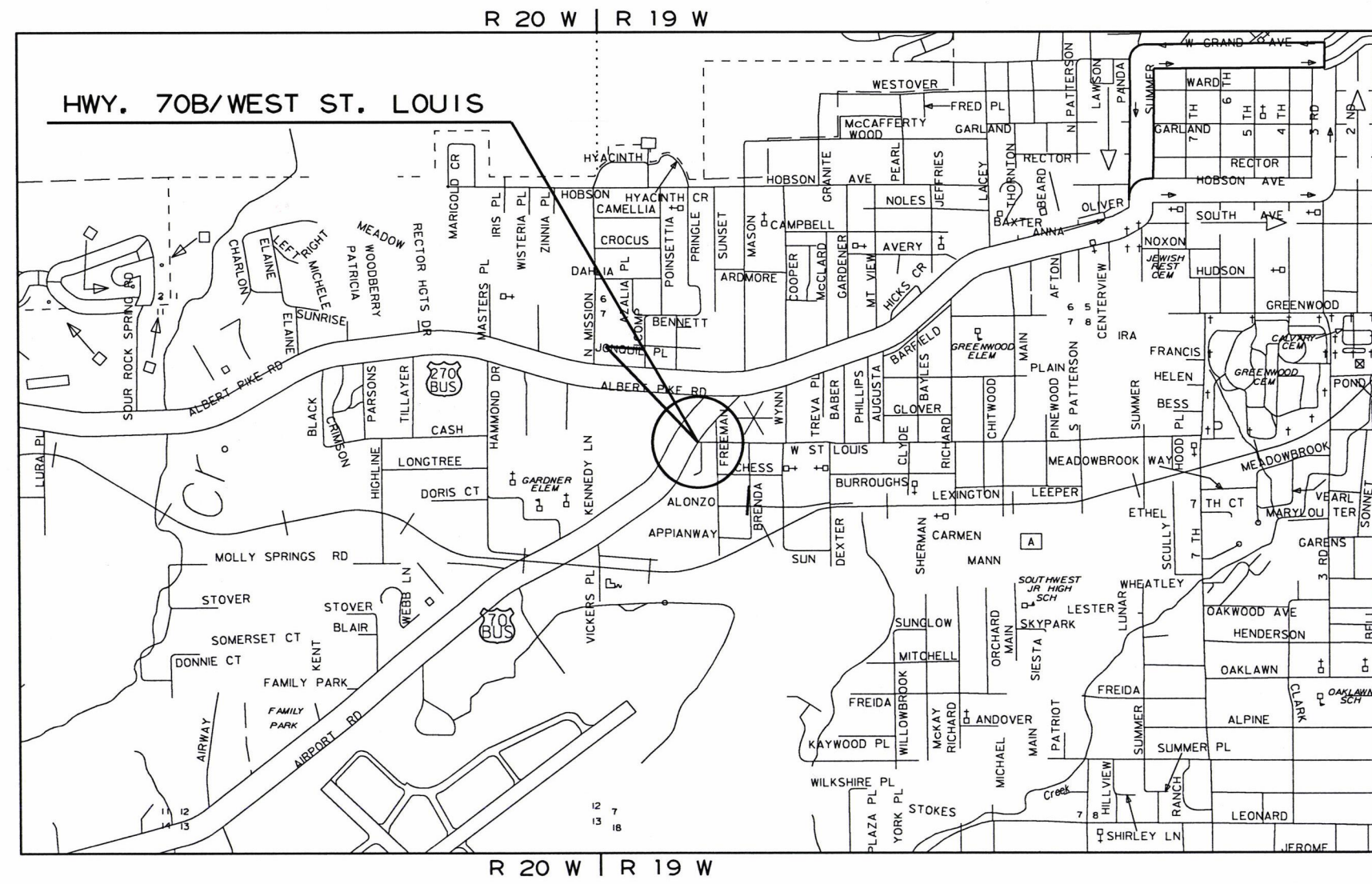
GARLAND COUNTY
ROUTE 70 SECTION 8B
FED. AID PROJ. STPC-9210(26)

JOB 061471

NOT TO SCALE



ARK. HWY. DIST. NO. 6



MID-POINT OF PROJECT
LAT. = N 34°29' 28"
LONG. = W 93°05' 11"



APPROVED



12-19-17
DEPUTY DIRECTOR
AND CHIEF ENGINEER

DATE REVISED	DATE FILMED	DATE REVISED	DATE FILMED	FED. RD. DIST. NO.	STATE	FED. AID PROJ. NO.	SHEET NO.	TOTAL SHEETS	
				6	ARK.				
JOB NO.							061471	2	17

② INDEX OF SHEETS AND STANDARD DRAWINGS



12/19/17

INDEX OF SHEETS

SHEET NO.	TITLE
1	TITLE SHEET
2	INDEX OF SHEETS AND STANDARD DRAWINGS
3	GOVERNING SPECIFICATIONS AND GENERAL NOTES
4	TEMPORARY EROSION CONTROL DETAIL
5	MAINTENANCE OF TRAFFIC DETAIL
6	PERMANENT PAVEMENT MARKING DETAIL
7 - 8	QUANTITIES
9	SUMMARY OF QUANTITIES AND REVISIONS
10 - 11	SURVEY CONTROL DETAILS
12	TRAFFIC SIGNAL NOTES
13	TRAFFIC SIGNAL QUANTITIES
14 - 17	SIGNALIZATION PLAN SHEETS

ROADWAY STANDARD DRAWINGS

DRWG.NO.	TITLE	DATE
CG-1	CURBING DETAILS	11-29-07
PM-1	PAVEMENT MARKING DETAILS	06-01-17
SD-5	CONTROLLER CABINET UTILITY DRAWER	09-12-13
SD-6	HEAVY DUTY PULL BOX	11-16-17
SD-8	SIGNAL HEAD PLACEMENT	12-08-16
SD-9	SERVICE POINT	11-16-17
SD-11	STEEL POLE WITH MAST ARM	11-16-17
TC-1	STANDARD TRAFFIC CONTROLS FOR HIGHWAY CONSTRUCTION	04-13-17
TC-2	STANDARD TRAFFIC CONTROLS FOR HIGHWAY CONSTRUCTION	09-02-15
TC-3	STANDARD TRAFFIC CONTROLS FOR HIGHWAY CONSTRUCTION	09-02-15
TEC-1	TEMPORARY EROSION CONTROL DEVICES	11-16-17
WR-1	WHEELCHAIR RAMPS NEW CONSTRUCTION AND ALTERATIONS	11-10-05

LOCATION: HWY. 70B/W. ST. LOUIS
 CITY: HOT SPRINGS
 COUNTY: GARLAND
 DISTRICT: 6 SCALE: N/A DRAWN BY: GWE

DATE REVISED	DATE FILMED	DATE REVISED	DATE FILMED	FED. RD. DIST. NO.	STATE	FED. AID PROJ. NO.	SHEET NO.	TOTAL SHEETS
				6	ARK.			
						061471	3	17

② GOVERNING SPECIFICATIONS AND GEN. NOTES



GENERAL NOTES

1. ALL PIPE LINES, POWER, TELEPHONE, AND TELEGRAPH LINES TO BE MOVED OR LOWERED BY THE RESPECTIVE OWNERS AS PER AGREEMENT WITH SUCH OWNERS.
2. ANY EQUIPMENT OR APPURTENANCE THAT INTERFERES WITH THE PROPOSED CONSTRUCTION AND WHICH MAY BE THE PROPERTY OF UTILITY SERVICE ORGANIZATIONS SHALL BE MOVED BY THE OWNERS UNLESS OTHERWISE PROVIDED.
3. ALL LAND MONUMENTS LOCATED WITHIN THE CONSTRUCTION AREA SHALL BE PROTECTED IN ACCORDANCE WITH SECTION 107.12 OF THE STANDARD SPECIFICATIONS.
4. ALL FLEXIBLE BASE AND ASPHALTIC PAVEMENTS REMOVED SHALL BE PAID FOR UNDER THE ITEM NO. 210 - UNCLASSIFIED EXCAVATION.
5. THE EXISTING ASPHALT PAVEMENT TO BE REMOVED FROM THE REMAINING PAVEMENT SHALL BE SEPARATED BY SAWING ALONG A NEAT LINE. AFTER SAWING, THE PAVEMENT TO BE REMOVED SHALL BE CAREFULLY REMOVED IN A MANNER THAT WILL NOT DAMAGE THE PAVEMENT THAT IS TO REMAIN. ANY DAMAGE OF THE ASPHALT PAVEMENT THAT IS TO REMAIN IN PLACE SHALL BE REPAIRED AT THE CONTRACTOR'S EXPENSE.

GOVERNING SPECIFICATIONS

ARKANSAS STATE HIGHWAY COMMISSION STANDARD SPECIFICATIONS FOR HIGHWAY CONSTRUCTION, EDITION OF 2014, AND THE FOLLOWING SPECIAL PROVISIONS AND SUPPLEMENTAL SPECIFICATIONS:

NUMBER	TITLE
ERRATA	ERRATA FOR THE BOOK OF STANDARD SPECIFICATIONS
FHWA-1273	REQUIRED CONTRACT PROVISIONS FEDERAL-AID CONSTRUCTION CONTRACTS
FHWA-1273	SUPPLEMENT - EQUAL EMPLOYMENT OPPORTUNITY - NOTICE TO CONTRACTORS
FHWA-1273	SUPPLEMENT - SPECIFIC EQUAL EMPLOYMENT OPPORTUNITY RESPONSIBILITIES (23 U.S.C. 140)
FHWA-1273	SUPPLEMENT - EQUAL EMPLOYMENT OPPORTUNITY - GOALS AND TIMETABLES
FHWA-1273	SUPPLEMENT - EQUAL EMPLOYMENT OPPORTUNITY - FEDERAL STANDARDS
FHWA-1273	SUPPLEMENT - POSTERS AND NOTICES REQUIRED FOR FEDERAL-AID PROJECTS
FHWA-1273	SUPPLEMENT - WAGE RATE DETERMINATION
100-3	CONTRACTOR'S LICENSE
100-4	DEPARTMENT NAME CHANGE
102-2	ISSUANCE OF PROPOSALS
108-1	LIQUIDATED DAMAGES
108-2	WORK ALLOWED PRIOR TO ISSUANCE OF WORK ORDER
400-1	TACK COATS
400-4	DESIGN AND QUALITY CONTROL OF ASPHALT MIXTURES
410-1	CONSTRUCTION REQUIREMENTS AND ACCEPTANCE OF ASPHALT CONCRETE PLANT MIX COURSES
604-1	RETROREFLECTIVE SHEETING FOR TRAFFIC CONTROL DEVICES IN CONSTRUCTION ZONES
JOB 061471	BIDDING REQUIREMENTS AND CONDITIONS
JOB 061471	BROADBAND INTERNET SERVICE FOR ASPHALT CONCRETE PLANT
JOB 061471	CABINET DRAWER ASSEMBLY
JOB 061471	CARGO PREFERENCE ACT REQUIREMENTS
JOB 061471	DELAY IN RIGHT OF WAY OCCUPANCY
JOB 061471	DOCUMENTATION OF PAYMENTS MADE TO DISADVANTAGED BUSINESS ENTERPRISES
JOB 061471	EDGE CARD VIDEO PROCESSOR
JOB 061471	ELECTRICAL CONDUCTORS FOR LUMINAIRES
JOB 061471	ELECTRICAL CONDUCTORS-IN-CONDUIT
JOB 061471	LED COUNTDOWN PEDESTRIAN SIGNAL HEAD
JOB 061471	LED LUMINAIRE ASSEMBLY (BUG UO TYPE)
JOB 061471	LED TRAFFIC SIGNAL HEAD
JOB 061471	MANDATORY ELECTRONIC CONTRACT
JOB 061471	MANDATORY ELECTRONIC DOCUMENT SUBMITTAL
JOB 061471	SERVICE POINT ASSEMBLY (TRAFFIC CONTROL DEVICES)
JOB 061471	STREET NAME SIGN (MAST ARM MOUNTED)
JOB 061471	SYSTEM LOCAL CONTROLLER
JOB 061471	SUBMISSION OF ASPHALT CONCRETE HOT MIX ACCEPTANCE TEST RESULTS
JOB 061471	UTILITY ADJUSTMENTS
JOB 061471	VIDEO DETECTOR (COLOR)
JOB 061471	WARM MIX ASPHALT

LOCATION: HWY. 70B/W. ST. LOUIS
 CITY: HOT SPRINGS
 COUNTY: GARLAND
 DISTRICT: 6 SCALE: N/A DRAWN BY: GWE

DATE REVISED	DATE FILMED	DATE REVISED	DATE FILMED	FED. RD. DIST. NO.	STATE	FED. AID PROJ. NO.	SHEET NO.	TOTAL SHEETS
				6	ARK.			
				JOB NO.	061471		4	17

2 TEMPORARY EROSION CONTROL DETAIL

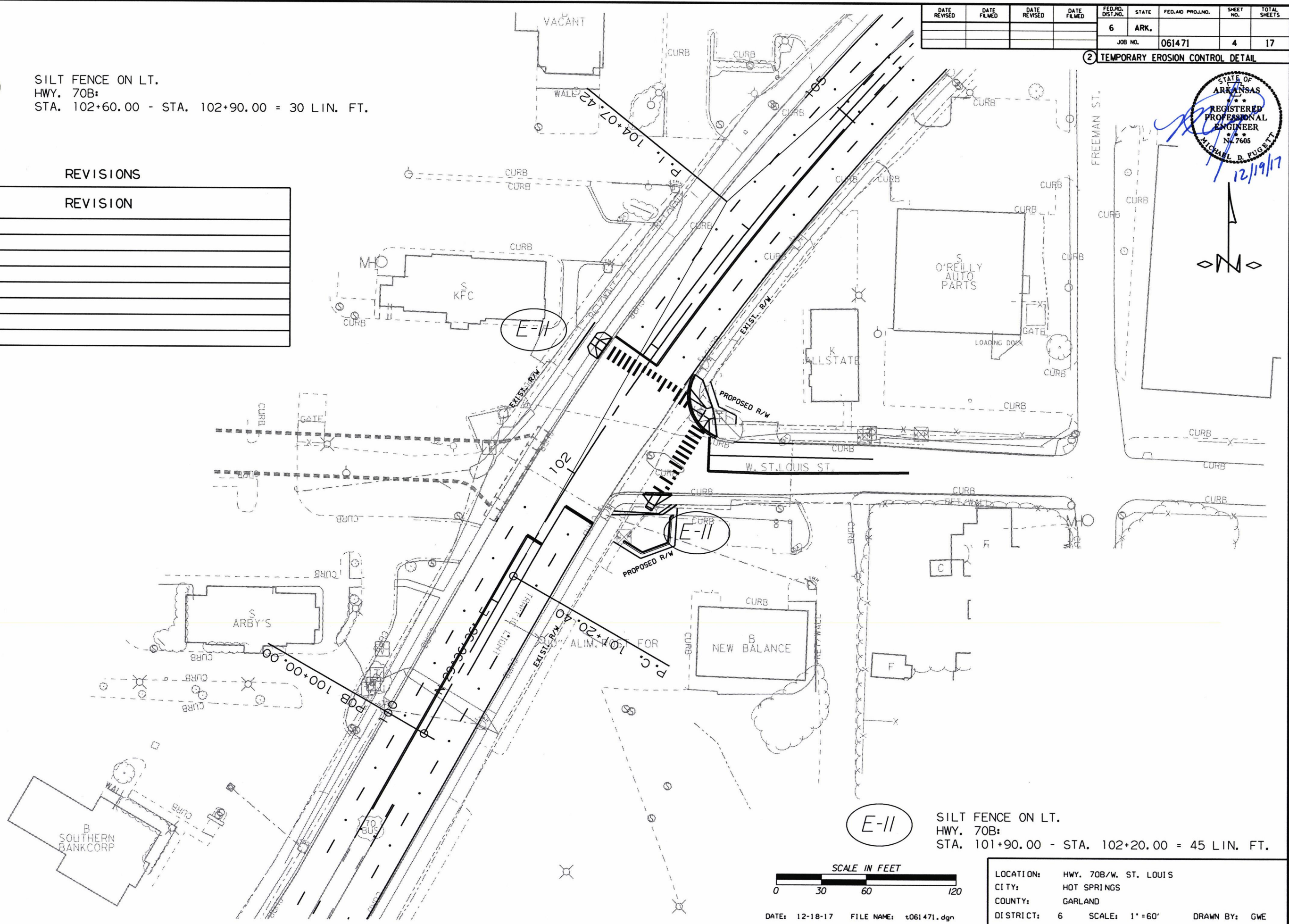


E-11

SILT FENCE ON LT.
HWY. 70B:
STA. 102+60.00 - STA. 102+90.00 = 30 LIN. FT.

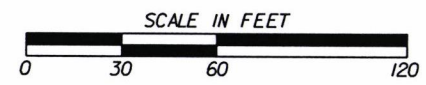
REVISIONS

DATE	REVISION



E-11

SILT FENCE ON LT.
HWY. 70B:
STA. 101+90.00 - STA. 102+20.00 = 45 LIN. FT.



DATE: 12-18-17 FILE NAME: t061471.dgn

LOCATION:	HWY. 70B/W. ST. LOUIS
CITY:	HOT SPRINGS
COUNTY:	GARLAND
DISTRICT:	6
SCALE:	1" = 60'
DRAWN BY:	GWE

T061471.DGN 12/14/2017