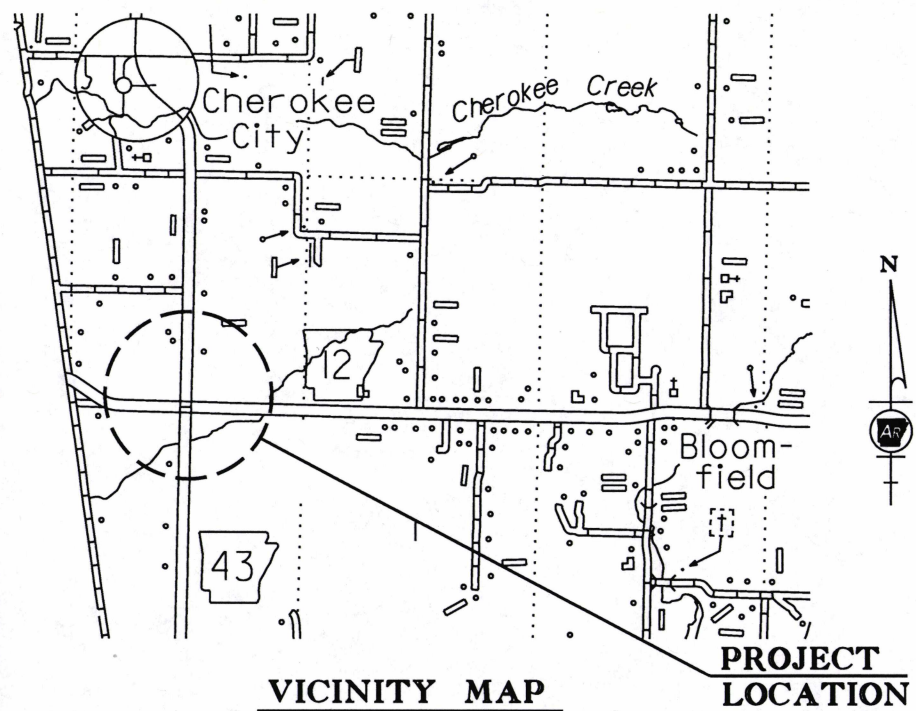


DATE REVISED	DATE FILMED	DATE REVISED	DATE FILMED	FED. RD. DIST. NO.	STATE	FED. AID PROJ. NO.	SHEET NO.	TOTAL SHEETS
				6	ARK.			
JOB NO. 090445							1	51

2 HWY. 12/HWY. 43 INTERS. SAFETY IMPVTS. (S)

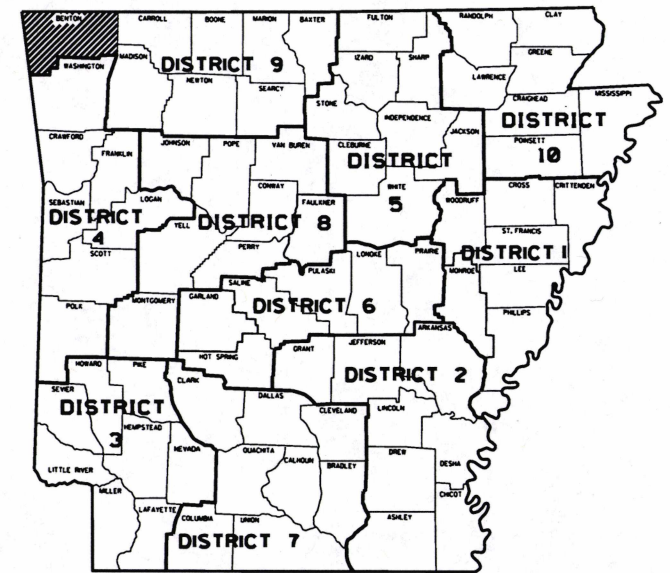


**ARKANSAS DEPARTMENT OF TRANSPORTATION
CONSTRUCTION PLANS FOR STATE HIGHWAY**

**HWY. 12/HWY. 43 INTERS.
SAFETY IMPVTS. (S)**

**BENTON COUNTY
ROUTE 12 SECTION 1
ROUTE 43 SECTION 0
JOB 090445
FED. AID PROJ. HSIP-0004(66)**

NOT TO SCALE

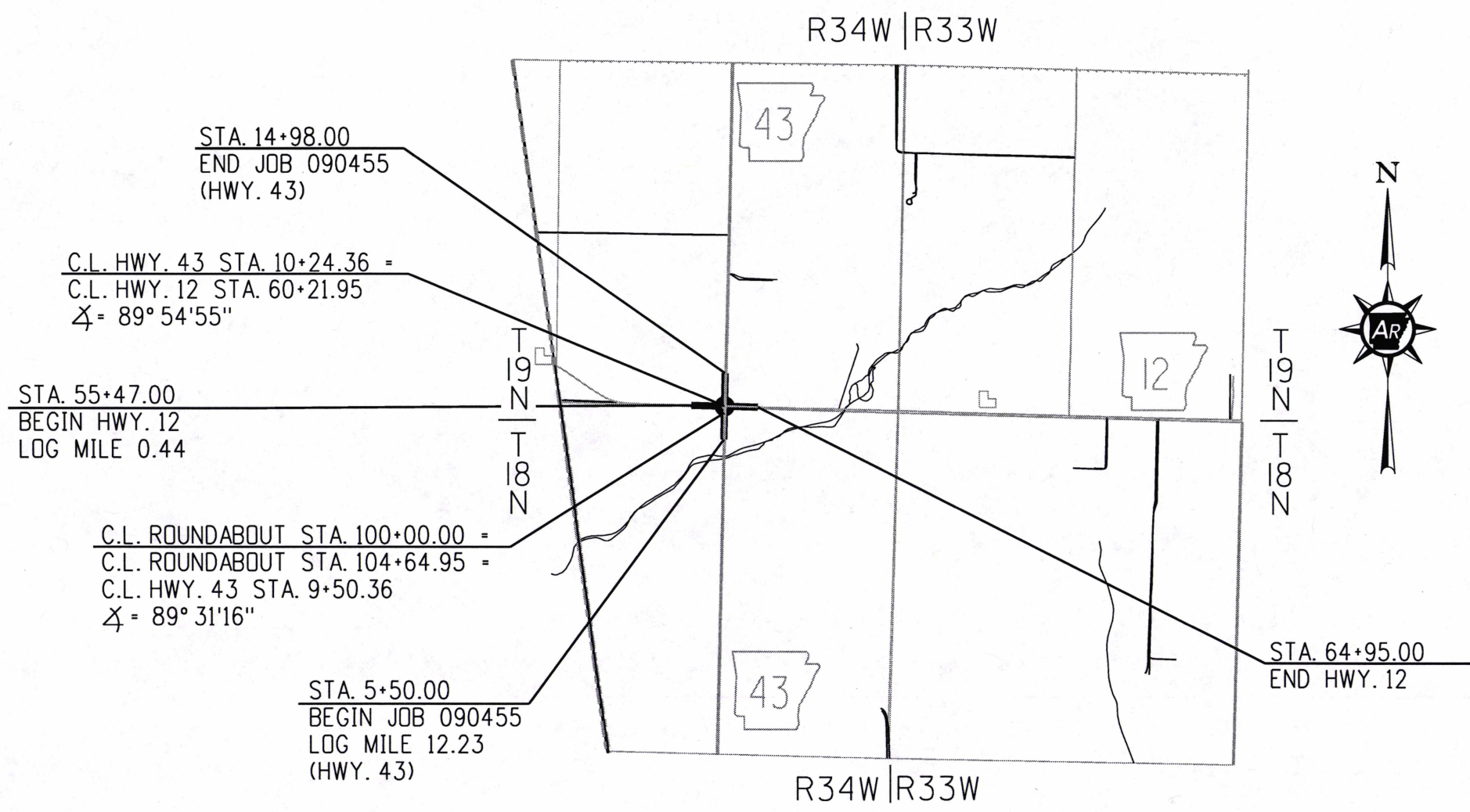


DESIGN TRAFFIC DATA (HWY. 12)

DESIGN YEAR	2039
2019 ADT	2800
2039 ADT	3700
2039 DHV	407
DIRECTIONAL DISTRIBUTION	0.60
TRUCKS	9%
DESIGN SPEED	20 MPH

DESIGN TRAFFIC DATA (HWY. 43)

DESIGN YEAR	2039
2019 ADT	2200
2039 ADT	2900
2039 DHV	319
DIRECTIONAL DISTRIBUTION	0.60
TRUCKS	8%
DESIGN SPEED	20 MPH



PROJECT COORDINATES:

	BEGIN	MID-POINT	END
LAT.	N36° 16' 36"	N36° 16' 36"	N36° 16' 35"
LONG.	W94° 34' 31"	W94° 34' 25"	W94° 34' 20"

GROSS	LENGTH OF PROJECT	1896.00 FEET OR	0.359 MILES
NET	" " ROADWAY	1896.00 "	0.359 MILES
NET	" " BRIDGE	0.00 "	0.000 MILES
NET	" " PROJECT	1896.00 "	0.359 MILES

APPROVED



DEPUTY DIRECTOR
AND CHIEF ENGINEER

6/20/2019

R090445.DGN

DATE REVISED	DATE FILED	DATE REVISED	DATE FILED	FED. RD. DIST. NO.	STATE	FED. AID PROJ. NO.	SHEET NO.	TOTAL SHEETS	
				6	ARK.				
JOB NO.							090445	2	51

② INDEX OF SHEET AND STANDARD DRAWINGS



INDEX OF SHEETS

SHEET NO.	TITLE
1	TITLE SHEET
2	INDEX OF SHEETS AND STANDARD DRAWINGS
3	GOVERNING SPECIFICATIONS AND GENERAL NOTES
4	TYPICAL SECTIONS OF IMPROVEMENT
5 - 9	SPECIAL DETAILS
10 - 12	TEMPORARY EROSION CONTROL DETAILS
13 - 16	MAINTENANCE OF TRAFFIC DETAILS
17 - 18	PERMANENT PAVEMENT MARKING DETAILS
19 - 22	QUANTITIES
23	SUMMARY OF QUANTITIES AND REVISIONS
24 - 28	SURVEY CONTROL DETAILS
29 - 33	PLAN AND PROFILE SHEETS
34	ILLUMINATION GENERAL NOTES
35	ILLUMINATION QUANTITIES AND SCHEDULE
36	ILLUMINATION LAYOUT
37	ILLUMINATION POLE DETAILS
38	PULL BOX DETAILS
39	WIRING DIAGRAM
40 - 51	CROSS SECTIONS

NOTE: CROSS SECTIONS NOT NORMALLY INCLUDED IN PLANS SOLD TO PROSPECTIVE BIDDERS, BUT MAY BE HAD UPON REQUEST.

ROADWAY STANDARD DRAWINGS

DRWG.NO.	TITLE	DATE
CDP-1	CONCRETE DITCH PAVING	12-08-16
CG-1	CURBING DETAILS	11-29-07
CPTJ-6A	TRANSVERSE & LONGITUDINAL JOINTS FOR CONCRETE PAVEMENT (NON-REINFORCED)	05-25-06
DR-1	DETAILS OF DRIVEWAYS & ISLANDS	02-27-14
FES-1	FLARED END SECTION	10-18-96
FES-2	FLARED END SECTION	10-18-96
FPC-9E	DETAILS OF DROP INLETS (TYPE C)	08-22-02
FPC-9M	DETAILS OF DROP INLET (TYPE MO)	08-22-02
PCC-1	CONCRETE PIPE CULVERT FILL HEIGHTS & BEDDING	02-27-14
PM-1	PAVEMENT MARKING DETAILS	06-01-17
PU-1	DETAILS OF PIPE UNDERDRAIN	12-08-16
SI-1	DETAILS OF SPECIAL ITEMS	10-25-18
TC-1	STANDARD TRAFFIC CONTROLS FOR HIGHWAY CONSTRUCTION	04-13-17
TC-2	STANDARD TRAFFIC CONTROLS FOR HIGHWAY CONSTRUCTION	09-02-15
TC-3	STANDARD TRAFFIC CONTROLS FOR HIGHWAY CONSTRUCTION	07-25-19
TEC-1	TEMPORARY EROSION CONTROL DEVICES	11-16-17
TEC-2	TEMPORARY EROSION CONTROL DEVICES	06-02-94
TEC-3	TEMPORARY EROSION CONTROL DEVICES	11-03-94
WF-4	WIRE FENCE TYPE C AND D	08-22-02

6/21/2019

R090445.DGN