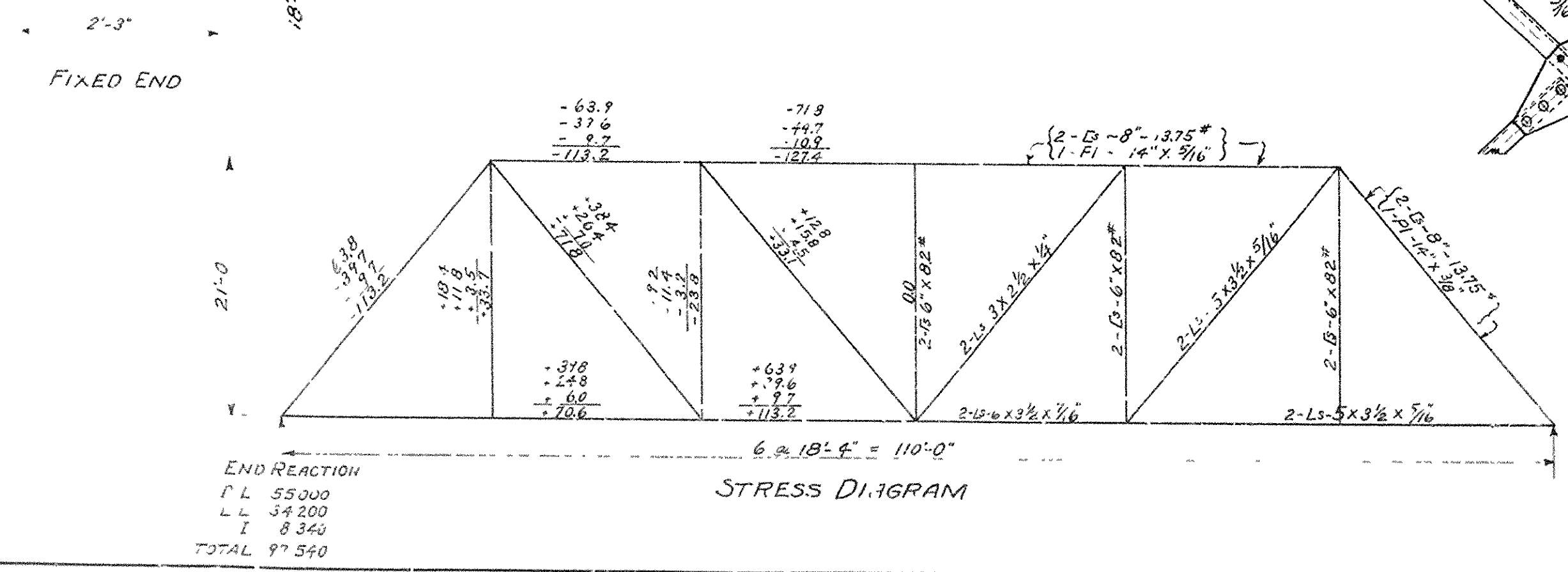
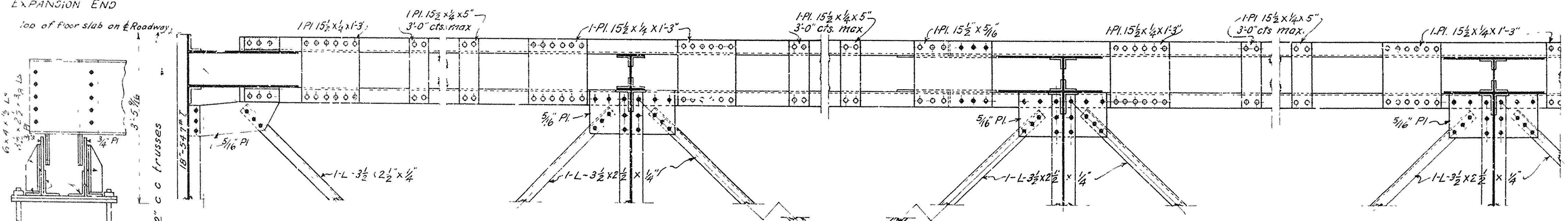
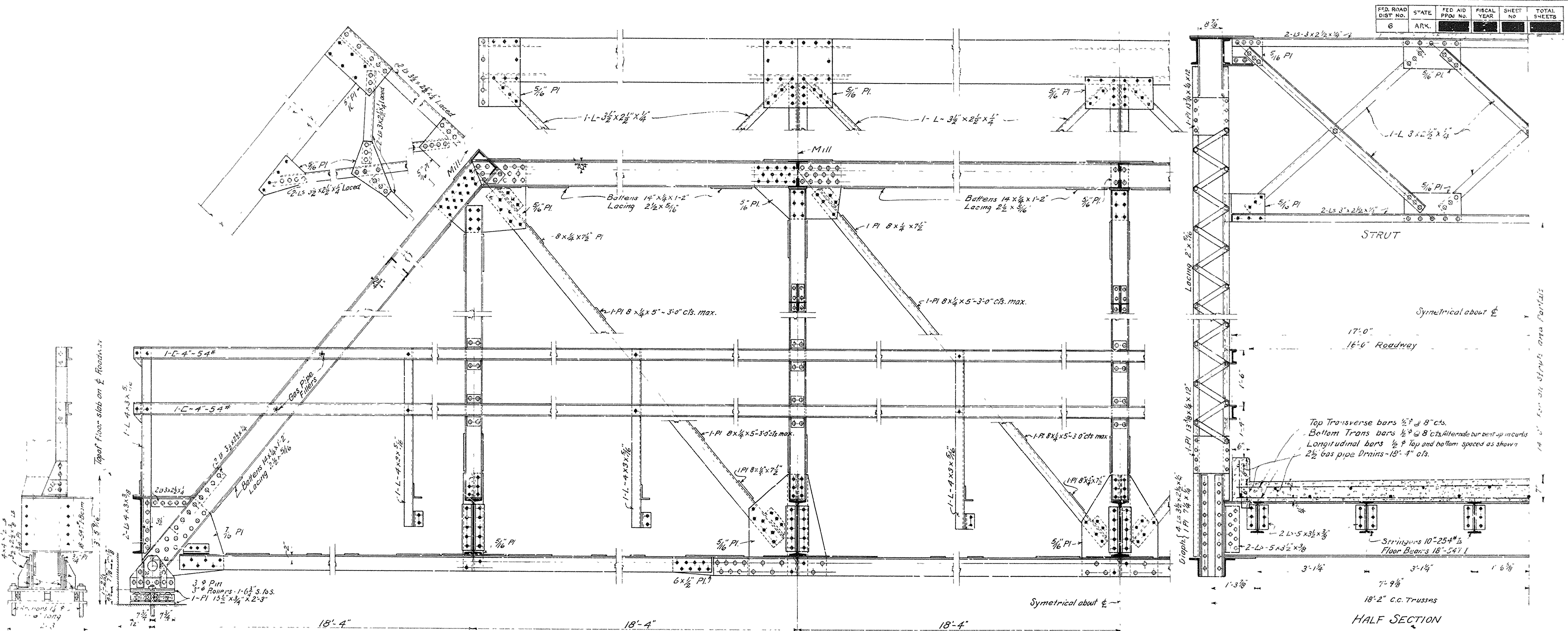


FED. ROAD DIST. NO.	STATE	FED. AID PROJ. NO.	FISCAL YEAR	SHEET NO.	TOTAL SHEETS
6	ARK.				



SPECIFICATIONS
 Live Load; Uniform 78 per sq ft of roadway. Concentrated 1-10 Ton Truck as shown below.

Impact = $\frac{100 \cdot S}{L + 300}$

Unit Stresses - See Arkansas Highway Departments Specifications.
 Rivets $\frac{3}{4}$ " diam. Open holes $\frac{1}{8}$ " diam, except in flang of 6" ls. All field connectors to be riveted. Rivet holes in tension members are to be so spaced that not more than one hole is deducted from the area of cross section of each angle at point of maximum stress.
 Shop Paint - One coat of red lead and raw linseed oil
 Field Paint - Two coats of different colors as approved by the engineer.
 Batten plates to be spaced not over 3'-0" centers on tension members.
 Concrete proportions, 1:2:3 Mix, Max. Agg. 1"
 In pouring concrete floor begin at center of bridge

STRINGERS
 D.L.M. = $\frac{1}{8} \times 291 \times 1833^2 = 11,800^{\#}$
 L.L.M. = $\frac{1}{4} \times 3450 \times 1833 = 15,800^{\#}$
 Impact = 30%
 Total = 32,340[#]
 $\frac{32,340 \times 12}{16,000} = 24.25$ Sec. Mod. Reqd
 Use 10" - 25.4" I. Sec. Mod. = 24.4

FLOOR BEAMS
 D.L.M. = $\frac{1}{8} \times 1605 \times 1817^2 = 36,400^{\#}$
 L.L.M. = 758 x 6810 = 51,700[#]
 Impact = 30%
 Total = 103,610[#]
 $\frac{103,610 \times 12}{16,000} = 77.8$ Sec. Mod. Reqd.
 Use 18" - 54.7" I. Sec. Mod. = 88.4

ESTIMATED QUANTITIES
 Structural Steel Lbs 68,000
 Reinforcing Steel Lbs 5,450
 Concrete Cu Yds 41.3

Note: This drawing is general only. Shop drawings must be made in compliance with the specifications, submitted and approved before fabrication is begun.

Designed By:	L.C.B.
Drawn By:	W.P.M.
Checked By:	
Revised:	

STANDARD PLAN
 110FT STEEL HIGHWAY BRIDGE
 16 FT. ROADWAY - CONCRETE FLOOR
 ARKANSAS HIGHWAY DEPARTMENT
 LITTLE ROCK, ARK.

APPROVED BY: _____
 CHAIRMAN, ARKANSAS STATE HIGHWAY COMMISSION
 STATE HIGHWAY ENGINEER
 RECOMMENDED FOR APPROVAL _____
 STATE HIGHWAY BRIDGE ENGINEER

AUGUST 1925