

DATE REVISED	DATE FILMED	DATE REVISED	DATE FILMED	FED. RD. DIST. NO.	STATE	FED. AID PROJ. NO.	SHEET NO.	TOTAL SHEETS
				6	ARK.			
						JOB NO. 110622	1	60

2 CHERRY VALLEY - POINSETT CO. LINE (PASSING LANE) (S)

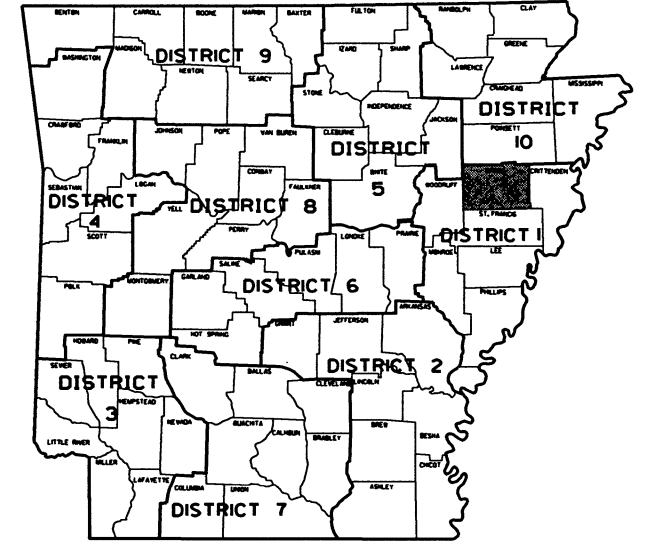
ARKANSAS DEPARTMENT OF TRANSPORTATION
CONSTRUCTION PLANS FOR STATE HIGHWAY

CHERRY VALLEY - POINSETT CO.
LINE (PASSING LANE) (S)

CROSS COUNTY
ROUTE 1 SECTION 14

FED. AID PROJ. NHPP-0019(48)

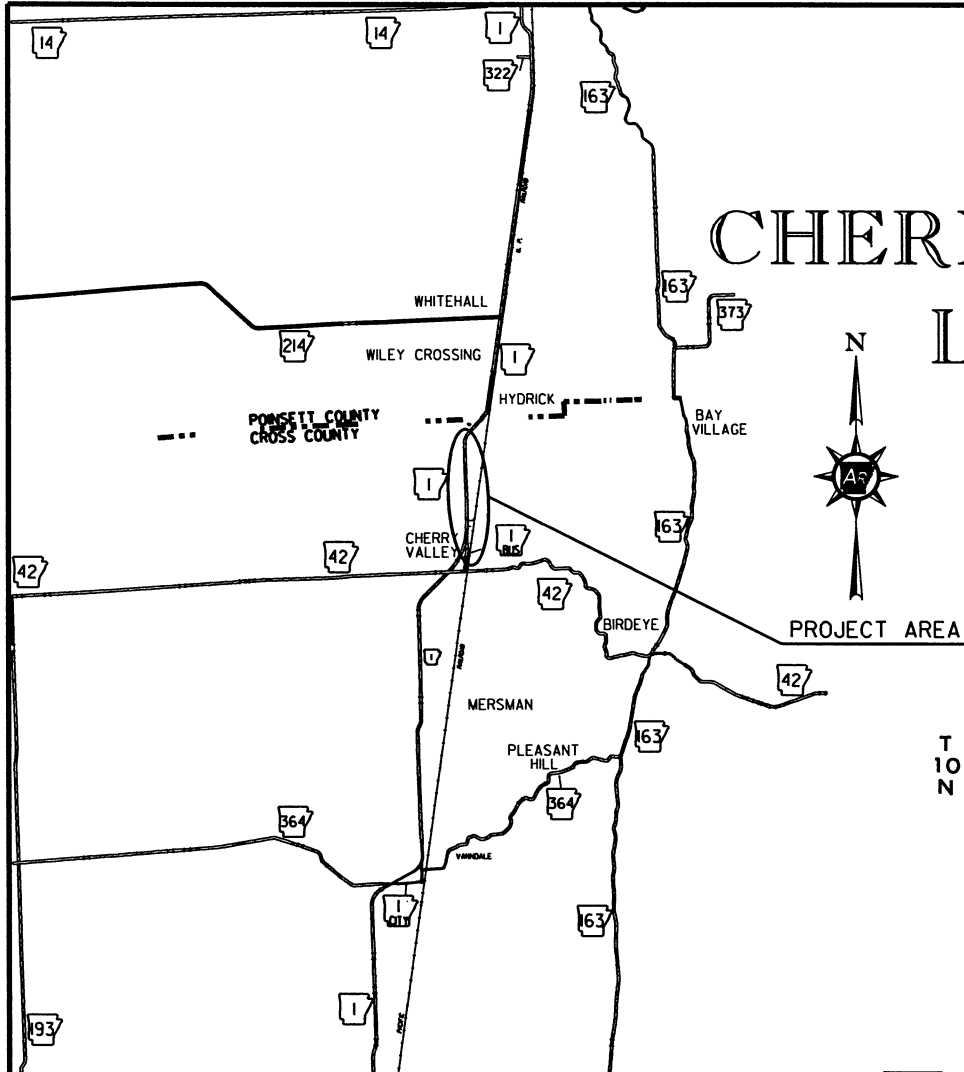
JOB 110622



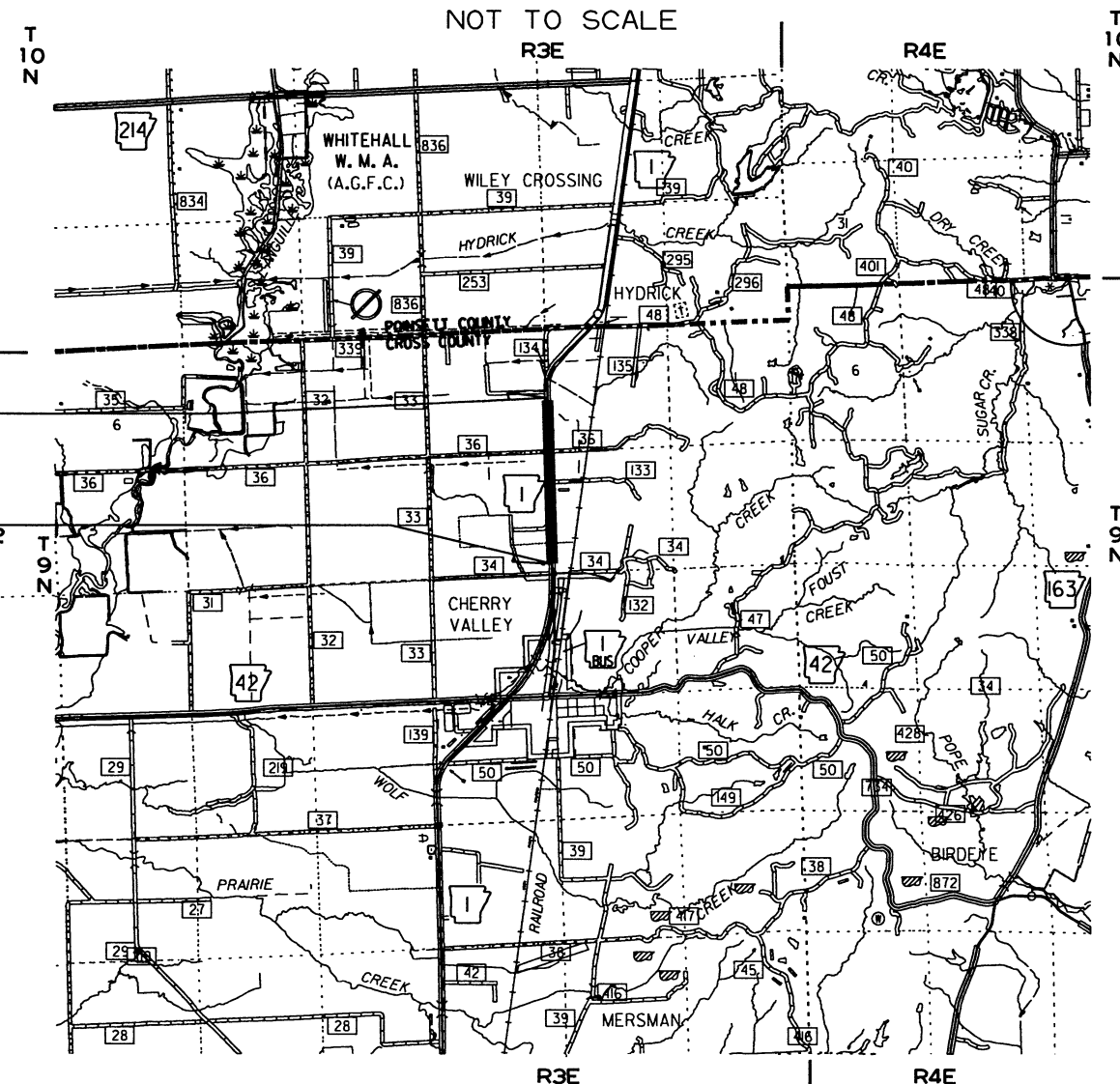
ARK. HWY. DIST. NO. 1

DESIGN TRAFFIC DATA

DESIGN YEAR	2019
2019 ADT	4600
2039 ADT	6000
2039 DHV	660
DIRECTIONAL DISTRIBUTION	0.60
TRUCKS	11%
AVG. RUNNING SPEED	55 MPH



VICINITY MAP

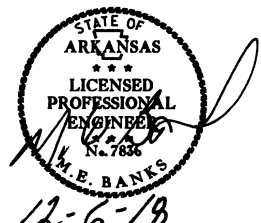


STA. 167+23.69
END JOB 110622

STA. 103+86.71
BEGIN JOB 110622
LOG MILE 12.30



APPROVED



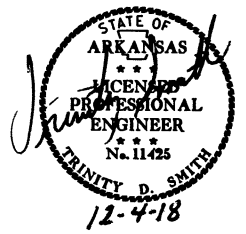
12-6-18
DEPUTY DIRECTOR
AND CHIEF ENGINEER

	BEGIN PROJECT	MID-POINT OF PROJECT	END PROJECT
LATITUDE	N 35°25' 08"	N 35°25' 46"	N 35°26' 11"
LONGITUDE	W 90°45' 07"	W 90°45' 07"	W 90°45' 06"

LENGTH OF PROJECT CALCULATED ALONG C.L.			
GROSS LENGTH OF PROJECT	6336.98	FEET OR	1.200 MILES
NET ROADWAY	6336.98		1.200 MILES
NET BRIDGES	0.00		0.000 MILES
NET PROJECT	6336.98		1.200 MILES

DATE REVISED	DATE FILMED	DATE REVISED	DATE FILMED	FED. DIST. NO.	STATE	FED. AID PROJ. NO.	SHEET NO.	TOTAL SHEETS
				6	ARK.			
						JOB NO. 110622	2	60

2 INDEX OF SHEETS & STANDARD DRAWINGS



INDEX OF SHEETS

SHEET NO.	TITLE
1	TITLE SHEET
2	INDEX OF SHEETS AND STANDARD DRAWINGS
3	GOVERNING SPECIFICATIONS AND GENERAL NOTES
4	TYPICAL SECTIONS OF IMPROVEMENT
5 - 7	SPECIAL DETAILS
8 - 14	TEMPORARY EROSION CONTROL DETAILS
15 - 21	MAINTENANCE OF TRAFFIC DETAILS
22	PERMANENT PAVEMENT MARKING DETAILS
23 - 27	QUANTITIES
28	SUMMARY OF QUANTITIES AND REVISIONS
29 - 32	SURVEY CONTROL DETAILS
33 - 37	PLAN AND PROFILE SHEETS
38 - 60	CROSS SECTIONS

NOTE: CROSS SECTIONS NOT NORMALLY INCLUDED IN PLANS SOLD TO PROSPECTIVE BIDDERS, BUT MAY BE HAD UPON REQUEST.

ROADWAY STANDARD DRAWINGS

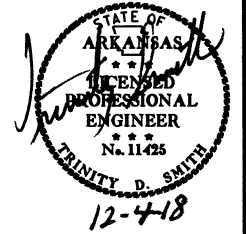
DRWG.NO.	TITLE	DATE
FES-1	FLARED END SECTION	10-18-96
FES-2	FLARED END SECTION	10-18-96
MB-1	MAILBOX DETAILS	11-18-04
PBC-1	PRECAST CONCRETE BOX CULVERTS	01-28-15
PCC-1	CONCRETE PIPE CULVERT FILL HEIGHTS & BEDDING	02-27-14
PCM-1	METAL PIPE CULVERT FILL HEIGHTS & BEDDING	02-27-14
PCP-1	PLASTIC PIPE CULVERT (HIGH DENSITY POLYETHYLENE)	02-27-14
PCP-2	PLASTIC PIPE CULVERT (PVC F949)	02-27-14
PM-1	PAVEMENT MARKING DETAILS	06-01-17
PU-1	DETAILS OF PIPE UNDERDRAIN	12-08-16
RCB-1	REINFORCED CONCRETE BOX CULVERT DETAILS	07-26-12
RCB-2	EXCAVATION PAY LIMITS, BACKFILL, & SOLID SODDING FOR BOX CULVERTS	11-20-03
RCB-3	METHOD OF EXTENDING EXISTING R.C. BOX CULVERTS	10-12-95
SE-2	TABLES AND METHOD OF SUPERELEVATION FOR TWO-WAY TRAFFIC	10-18-96
SI-1	DETAILS OF SPECIAL ITEMS	10-25-18
TC-1	STANDARD TRAFFIC CONTROLS FOR HIGHWAY CONSTRUCTION	04-13-17
TC-2	STANDARD TRAFFIC CONTROLS FOR HIGHWAY CONSTRUCTION	09-02-15
TC-3	STANDARD TRAFFIC CONTROLS FOR HIGHWAY CONSTRUCTION	09-02-15
TC-4	STANDARD TRAFFIC CONTROLS FOR HIGHWAY CONSTRUCTION-TEMPORARY PRECAST BARRIER	02-27-14
TC-5	STANDARD TRAFFIC CONTROLS FOR HIGHWAY CONSTRUCTION-TEMPORARY PRECAST BARRIER	10-15-09
TEC-1	TEMPORARY EROSION CONTROL DEVICES	11-16-17
TEC-2	TEMPORARY EROSION CONTROL DEVICES	06-02-94
TEC-3	TEMPORARY EROSION CONTROL DEVICES	11-03-94
WF-4	WIRE FENCE TYPE C AND D	08-22-02
W-X003-1	DETAILS OF STANDARD WINGS FOR REINFORCED CONCRETE BOX CULVERTS	05-10-66
R-100X-0	DETAILS OF STANDARD BARREL SECTIONS FOR REINFORCED CONCRETE BOX CULVERTS	02-08-63
R-200X-0	DETAILS OF STANDARD BARREL SECTIONS FOR REINFORCED CONCRETE BOX CULVERTS	02-15-63

11/2/2018

R110622.DGN

DATE REVISED	DATE FILED	DATE REVISED	DATE FILED	FED. AID DIST. NO.	STATE	FED. AID PROJ. NO.	SHEET NO.	TOTAL SHEETS
				6	ARK.			
				JOB NO.	110622		3	60

2 GOVERNING SPECIFICATIONS & GENERAL NOTES



GOVERNING SPECIFICATIONS

ARKANSAS STATE HIGHWAY COMMISSION STANDARD SPECIFICATIONS FOR HIGHWAY CONSTRUCTION, EDITION OF 2014, AND THE FOLLOWING SPECIAL PROVISIONS AND SUPPLEMENTAL SPECIFICATIONS:

NUMBER	TITLE
ERRATA	ERRATA FOR THE BOOK OF STANDARD SPECIFICATIONS
FHWA-1273	REQUIRED CONTRACT PROVISIONS FEDERAL-AID CONSTRUCTION CONTRACTS
FHWA-1273	SUPPLEMENT - EQUAL EMPLOYMENT OPPORTUNITY - NOTICE TO CONTRACTORS
FHWA-1273	SUPPLEMENT - SPECIFIC EQUAL EMPLOYMENT OPPORTUNITY RESPONSIBILITIES (23 U.S.C. 140)
FHWA-1273	SUPPLEMENT - EQUAL EMPLOYMENT OPPORTUNITY - GOALS AND TIMETABLES
FHWA-1273	SUPPLEMENT - EQUAL EMPLOYMENT OPPORTUNITY - FEDERAL STANDARDS
FHWA-1273	SUPPLEMENT - POSTERS AND NOTICES REQUIRED FOR FEDERAL-AID PROJECTS
FHWA-1273	SUPPLEMENT - WAGE RATE DETERMINATION
100-3	CONTRACTOR'S LICENSE
100-4	DEPARTMENT NAME CHANGE
102-2	ISSUANCE OF PROPOSALS
108-1	LIQUIDATED DAMAGES
108-2	WORK ALLOWED PRIOR TO ISSUANCE OF WORK ORDER
110-1	PROTECTION OF WATER QUALITY AND WETLANDS
303-1	AGGREGATE BASE COURSE
306-1	QUALITY CONTROL AND ACCEPTANCE
400-1	TACK COATS
400-4	DESIGN AND QUALITY CONTROL OF ASPHALT MIXTURES
400-5	PERCENT AIR VOIDS FOR ACHM MIX DESIGNS
400-6	LIQUID ANTI-STRIP ADDITIVE
410-1	CONSTRUCTION REQUIREMENTS AND ACCEPTANCE OF ASPHALT CONCRETE PLANT MIX COURSES
410-2	DEVICES FOR MEASURING DENSITY FOR ROLLING PATTERNS
600-2	INCIDENTAL CONSTRUCTION
604-1	RETROREFLECTIVE SHEETING FOR TRAFFIC CONTROL DEVICES IN CONSTRUCTION ZONES
606-1	PIPE CULVERTS FOR SIDE DRAINS
620-1	MULCH COVER
800-1	STRUCTURES
802-3	CONCRETE FOR STRUCTURES
JOB 110622	BIDDING REQUIREMENTS AND CONDITIONS
JOB 110622	BROADBAND INTERNET SERVICE FOR ASPHALT CONCRETE PLANT
JOB 110622	BROADBAND INTERNET SERVICE FOR FIELD OFFICE
JOB 110622	CARGO PREFERENCE ACT REQUIREMENTS
JOB 110622	DISADVANTAGED BUSINESS ENTERPRISE BIDDER'S RESPONSIBILITIES
JOB 110622	EMBANKMENT CONSTRUCTION
JOB 110622	GOALS FOR DISADVANTAGED BUSINESS ENTERPRISE PARTICIPATION
JOB 110622	MANDATORY ELECTRONIC CONTRACT
JOB 110622	MANDATORY ELECTRONIC DOCUMENT SUBMITTAL
JOB 110622	NESTING SITES OF MIGRATORY BIRDS
JOB 110622	PARTNERING REQUIREMENTS
JOB 110622	PLASTIC PIPE
JOB 110622	RUMBLE STRIPS
JOB 110622	SETTLEMENT AGREEMENTS
JOB 110622	SHORING FOR CULVERTS
JOB 110622	SOIL STABILIZATION
JOB 110622	STORM WATER POLLUTION PREVENTION PLAN
JOB 110622	SUBMISSION OF ASPHALT CONCRETE HOT MIX ACCEPTANCE TEST RESULTS
JOB 110622	UTILITY ADJUSTMENTS
JOB 110622	VALUE ENGINEERING
JOB 110622	WARM MIX ASPHALT
JOB 110622	WELLHEAD PROTECTION

GENERAL NOTES

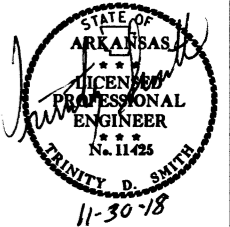
- GRADE LINE DENOTES FINISHED GRADE WHERE SHOWN ON PLANS.
- ALL PIPE LINES, POWER, TELEPHONE, AND TELEGRAPH LINES TO BE MOVED OR LOWERED BY THE RESPECTIVE OWNERS AS PER AGREEMENT WITH SUCH OWNERS.
- ANY EQUIPMENT OR APPURTENANCE THAT INTERFERES WITH THE PROPOSED CONSTRUCTION AND WHICH MAY BE THE PROPERTY OF UTILITY SERVICE ORGANIZATIONS SHALL BE MOVED BY THE OWNERS UNLESS OTHERWISE PROVIDED.
- THE CONTRACTOR SHALL BE RESPONSIBLE FOR MAINTAINING U. S. MAILBOXES WITHIN THE PROJECT LIMITS IN SUCH A MANNER THAT THE PUBLIC MAY RECEIVE CONTINUED MAIL SERVICE. PAYMENT WILL BE CONSIDERED INCLUDED IN THE PRICE BID FOR THE VARIOUS BID ITEMS.
- ALL LAND MONUMENTS LOCATED WITHIN THE CONSTRUCTION AREA SHALL BE PROTECTED IN ACCORDANCE WITH SECTION 107.12 OF THE STANDARD SPECIFICATIONS.
- ALL TREES THAT DO NOT DIRECTLY INTERFERE WITH THE PROPOSED CONSTRUCTION SHALL BE SPARED AS DIRECTED BY THE ENGINEER. CARE AND DISCRETION SHALL BE USED TO INSURE THAT ALL TREES NOT TO BE REMOVED SHALL BE HARMED AS LITTLE AS POSSIBLE DURING THE CONSTRUCTION OPERATIONS.
- THE CONTRACTOR SHALL BE RESPONSIBLE FOR PROVIDING A FENCE TO CONTROL LIVESTOCK IN AREAS WHERE PASTURES ARE SEVERED. WIRE FENCE MAY BE CONSTRUCTED INITIALLY, OR IN LIEU THEREOF, THE CONTRACTOR AT HIS OWN EXPENSE, MAY ELECT TO PROVIDE TEMPORARY FENCING SUITABLE TO CONTAIN LIVESTOCK.
- THE SEQUENCE AS SHOWN ON THE MAINTENANCE OF TRAFFIC PLANS IS A GENERAL OUTLINE FOR THE CONSTRUCTION OF THIS PROJECT, AND IN NO WAY IS IT INTENDED TO COVER EVERY ITEM IN THE PROJECT. ITEMS NOT CRITICAL TO THE CONSTRUCTION SEQUENCE MAY BE CONSTRUCTED IN ANY STAGE AS APPROVED BY THE RESIDENT ENGINEER.
- THE EXISTING ASPHALT PAVEMENT TO BE REMOVED FROM THE REMAINING PAVEMENT SHALL BE SEPARATED BY SAWING ALONG A NEAT LINE. AFTER SAWING, THE PAVEMENT TO BE REMOVED SHALL BE CAREFULLY REMOVED IN A MANNER THAT WILL NOT DAMAGE THE PAVEMENT THAT IS TO REMAIN. ANY DAMAGE OF THE ASPHALT PAVEMENT THAT IS TO REMAIN IN PLACE SHALL BE REPAIRED AT THE CONTRACTOR'S EXPENSE.
- THIS PROJECT IS COVERED UNDER A SECTION 404 NATIONWIDE 14 PERMIT. REFER TO SECTION 110 OF THE STANDARD SPECIFICATIONS, EDITION OF 2014, FOR PERMIT REQUIREMENTS.

11/2/2018

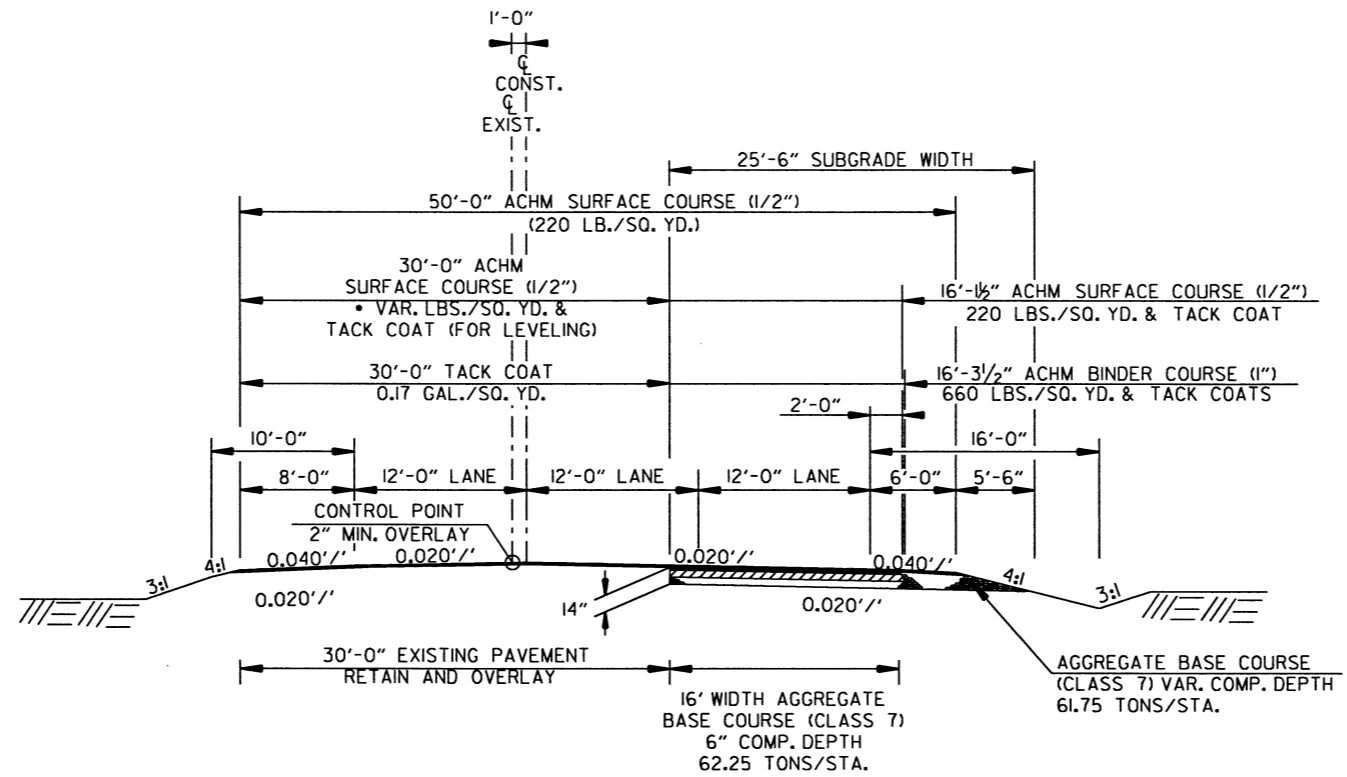
R110622.DGN

DATE REVISED	DATE FILMED	DATE REVISED	DATE FILMED	FED. RD. DIST. NO.	STATE	FED. AID PROJ. NO.	SHEET NO.	TOTAL SHEETS
				6	ARK.			
JOB NO. 110622							4	60

2 TYPICAL SECTIONS OF IMPROVEMENT



TRANSITION:
 STA. 103+86.71 - STA. 105+86.71
 STA. 160+63.69 - STA. 167+23.69



TYPICAL SECTION OF IMPROVEMENT - HWY. I - PASSING LANE

STA. 105+86.71 - STA. 114+26.23
 STA. 122+48.52 - STA. 160+63.69

• TO BE USED IF AND WHERE DIRECTED BY ENGINEER

NOTES:

THE THICKNESS OF AGGREGATE BASE COURSE SHALL BE WITHIN PLUS OR MINUS ONE INCH OF THE PLAN THICKNESS SHOWN. THE CONTRACTOR WILL CORRECT ANY DEFICIENT THICKNESS THAT DOES NOT MEET TOLERANCE INDICATED. PAYMENT WILL NOT BE MADE FOR MATERIAL PLACED IN EXCESS OF THE TOLERANCE INDICATED.

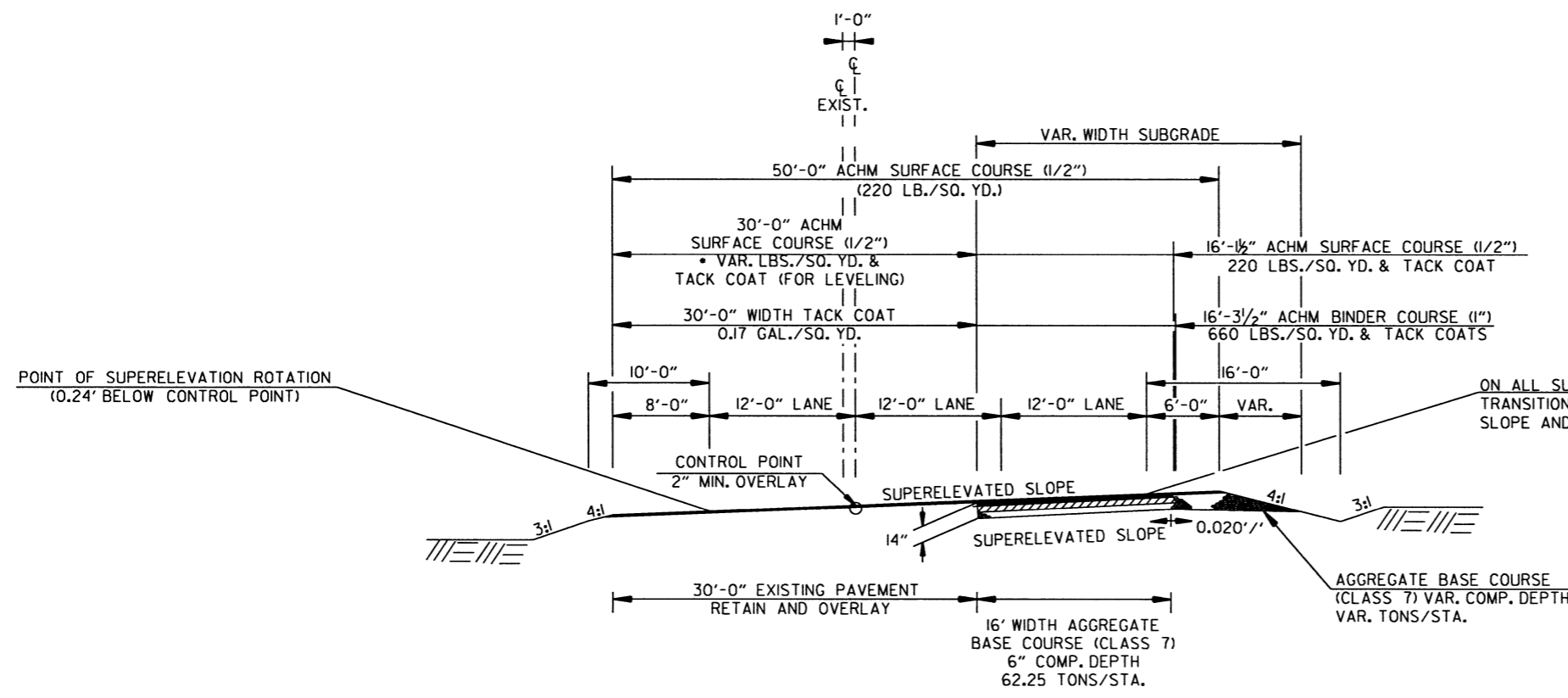
REFER TO CROSS SECTIONS FOR DEVIATION FROM THE NORMAL SLOPES. NO CHANGES SHALL BE MADE FROM THE PLANNED SLOPES WITHOUT THE APPROVAL OF THE ENGINEER.

THE FINAL 2" OF SURFACE COURSE IS TO BE PLACED AFTER ALL OTHER COURSES HAVE BEEN LAID. LONGITUDINAL JOINTS SHALL BE AT LANE LINES.

ASPHALT FOR LEVELING OF EXISTING PAVEMENT SHALL BE PLACED ONLY IF AND WHERE DIRECTED BY THE ENGINEER. CALCULATIONS FOR THE AMOUNT OF LEVELING AND/OR LEVELING OPERATIONS SHALL BE PERFORMED BEFORE CONSTRUCTING NOTCH AND WIDENING. CALCULATIONS WILL NOT BE PAID FOR DIRECTLY BUT PAYMENT WILL BE CONSIDERED INCLUDED IN THE VARIOUS PAY ITEMS.

WITH THE APPROVAL OF THE ENGINEER, THE CONTRACTOR WILL BE ALLOWED TO SUBSTITUTE, AT NO ADDITIONAL COST TO THE DEPARTMENT, THE FIRST LIFT OF ACHM SURFACE COURSE (1/2") IN LIEU OF AGGREGATE BASE COURSE ON THE SHOULDERS.

• TO BE USED IF AND WHERE DIRECTED BY ENGINEER



TYPICAL SECTION OF IMPROVEMENT - HWY. I - PASSING LANE

STA. 114+26.23 - STA. 122+48.52

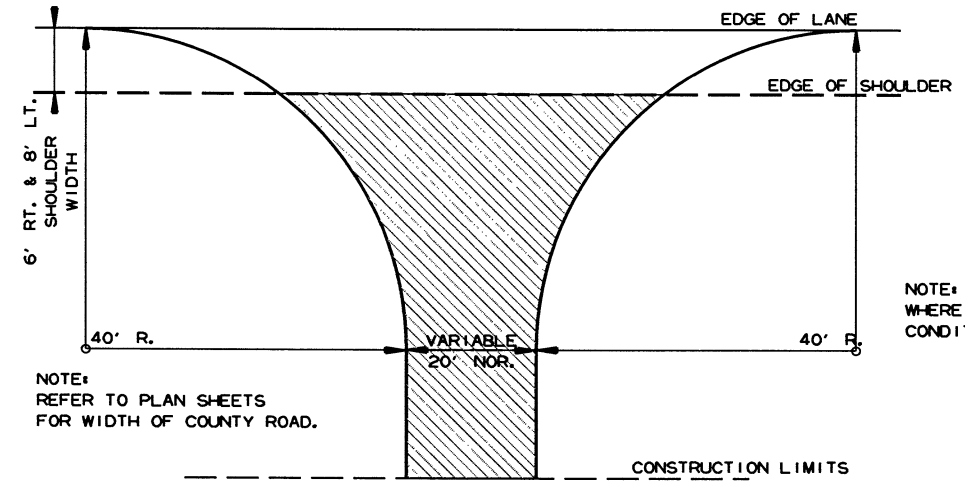
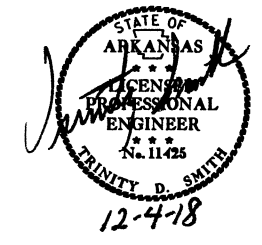
ON ALL SUPERELEVATED CURVES AND THRU SUPERELEVATION TRANSITIONS THE ALGEBRAIC DIFFERENCE BETWEEN PAVEMENT SLOPE AND SHOULDER SLOPE SHALL NOT EXCEED 0.08 %.

11/13/2018

RI10622.DGN

DATE REVISED	DATE FILMED	DATE REVISED	DATE FILMED	FED. DIST. NO.	STATE	FED. AID PROJ. NO.	SHEET NO.	TOTAL SHEETS
				6	ARK.		5	60
				JOB NO. 110622				

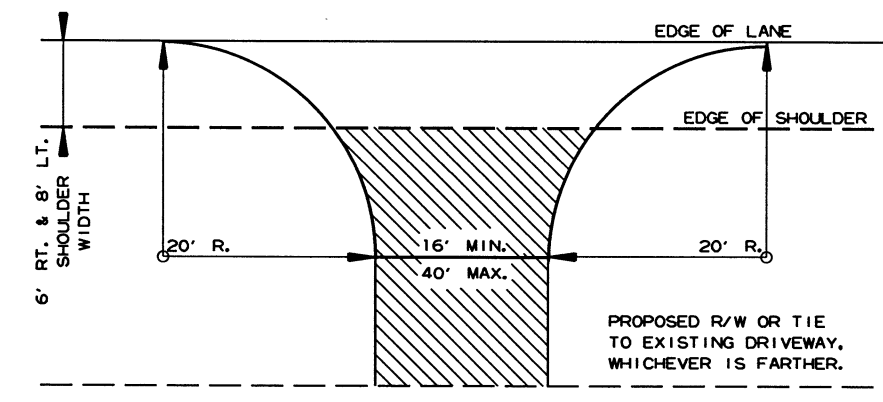
2 SPECIAL DETAILS



NOTE: TURNOUTS SHALL BE MODIFIED WHERE NECESSARY TO MEET LOCAL CONDITIONS AS DIRECTED BY THE ENGINEER.

ACHM SURFACE COURSE (1/2") (220 LBS. PER SQ. YD.) AND AGGREGATE BASE COURSE (CLASS 7) 7" COMP. DEPTH

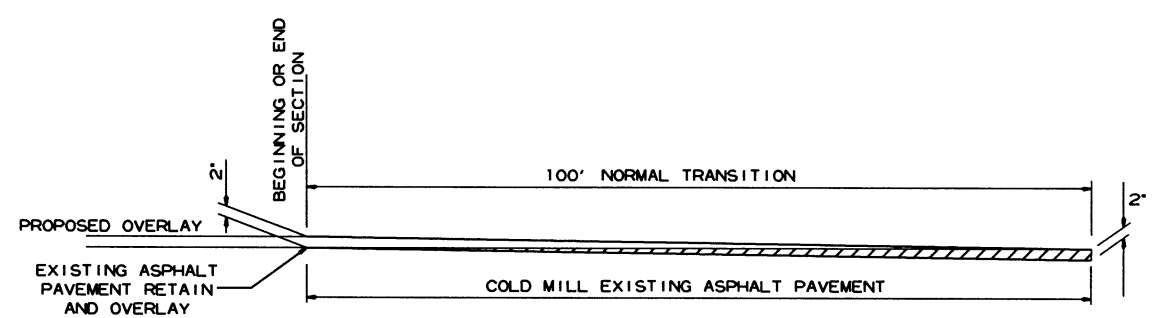
DETAIL FOR COUNTY ROAD TURNOUTS OPEN SHOULDER SECTION



NOTE: TURNOUTS AND PRIVATE DRIVES SHALL BE MODIFIED WHERE NECESSARY TO MEET LOCAL CONDITIONS AS DIRECTED BY THE ENGINEER.

ACHM SURFACE COURSE (1/2") (220 LBS. PER SQ. YD.) AND AGGREGATE BASE COURSE (CLASS 7) 7" COMP. DEPTH IF ASPHALT OR GRAVEL DRIVE EXISTING, OR 6" CONCRETE IF CONCRETE DRIVE EXISTING.

DETAIL FOR DRIVEWAY TURNOUTS OPEN SHOULDER SECTION (ARTERIALS)

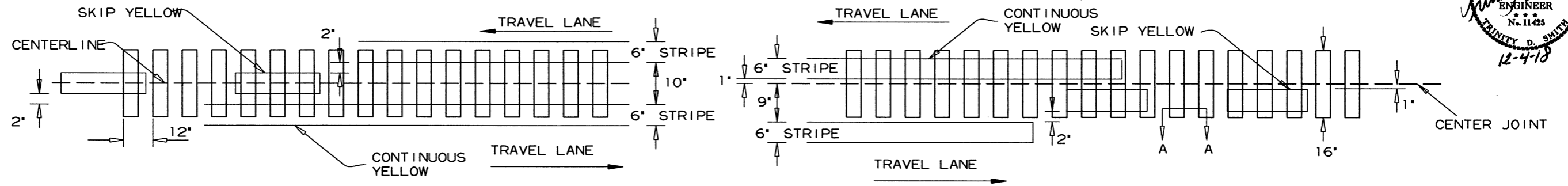
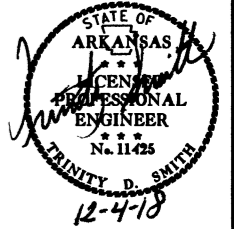


DETAIL FOR TRANSITIONS

11/2/2018
R110622.DGN

DATE REVISED	DATE FILMED	DATE REVISED	DATE FILMED	FED. DIST. NO.	STATE	FED. AID PROJ. NO.	SHEET NO.	TOTAL SHEETS
				6	ARK.			
						JOB NO. 110622	5A	60

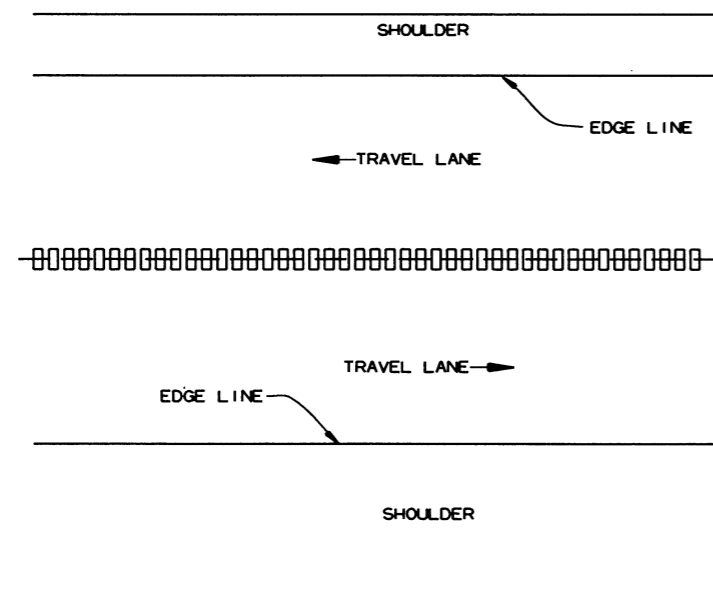
2 SPECIAL DETAILS



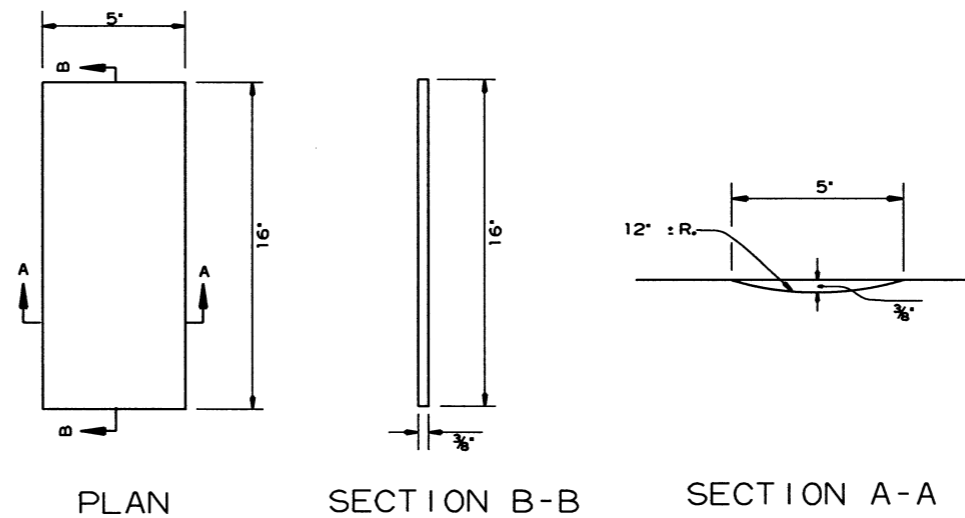
ASPHALT PAVEMENT

CONCRETE PAVEMENT

LOCATION PLAN OF CENTERLINE RUMBLE STRIPES



PLAN VIEW



DETAILS OF CENTERLINE RUMBLE STRIPES

GENERAL NOTES

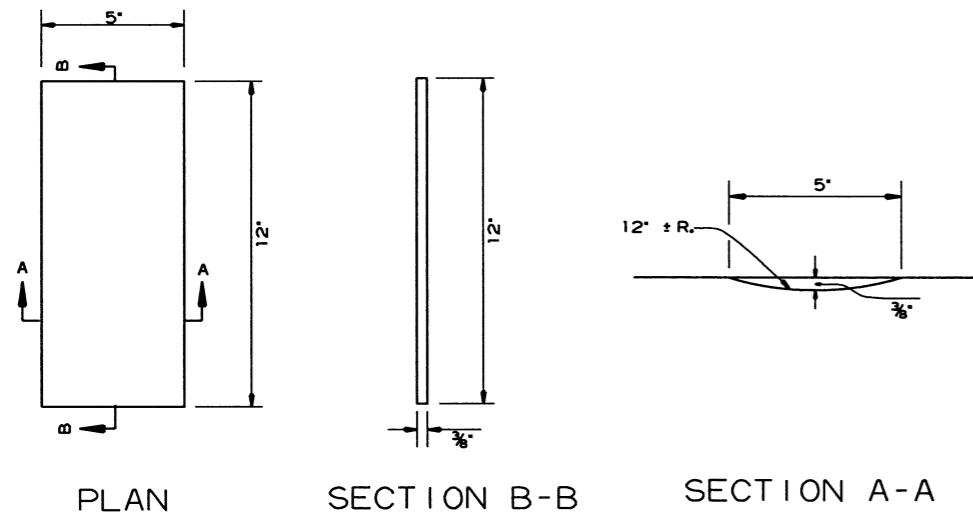
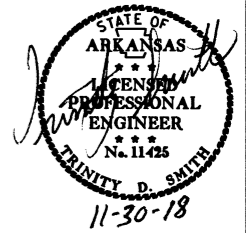
1. RUMBLE STRIPES SHALL NOT BE INSTALLED ON BRIDGE DECKS, APPROACH SLABS, INTERSECTING STREETS OR ROADWAYS, OR ACROSS TRANSVERSE JOINTS OF CONCRETE SHOULDERS.
2. RUMBLE STRIPES SHALL BE MEASURED BY THE LINEAR FOOT LONGITUDINALLY ALONG THE CENTERLINE.
3. THE 3/8" DEPTH SHALL GENERALLY APPLY FOR THE ENTIRE 16' LENGTH. SOME VARIATION TO SUIT SLOPE BREAKS MAY BE NECESSARY.

11/2/2018

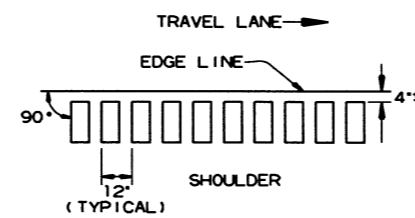
R110622.DGN

DATE REVISED	DATE FILMED	DATE REVISED	DATE FILMED	FED. PROJ. NO.	STATE	FED. PROJ. NO.	SHEET NO.	TOTAL SHEETS
				6	ARK.			
				JOB NO.	110622		6	60

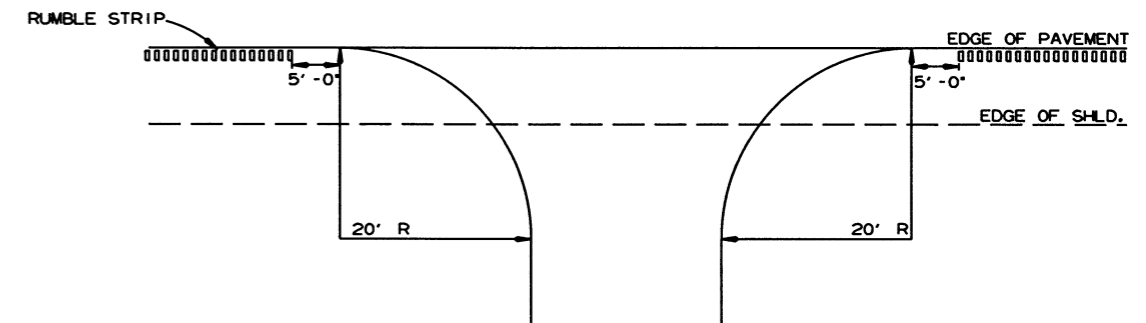
2 SPECIAL DETAILS



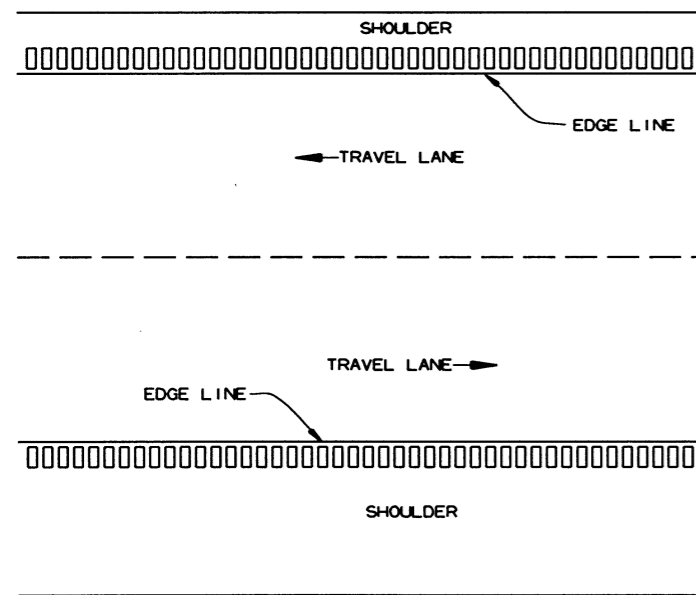
DETAILS OF RUMBLE STRIPS



LOCATION PLAN OF RUMBLE STRIPS
LEFT OR RIGHT SHOULDER



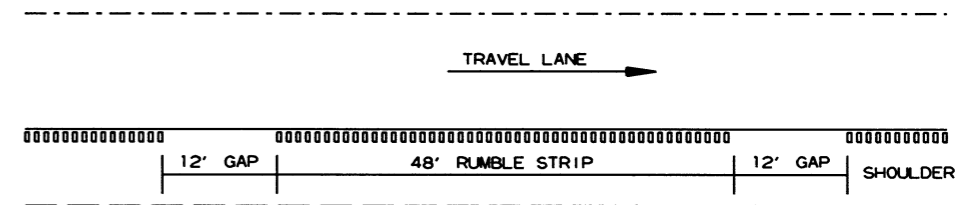
DETAIL FOR RUMBLE STRIP GAP
AT DRIVEWAY TURNOUTS



PLAN VIEW

GENERAL NOTES

1. RUMBLE STRIPS SHALL NOT BE INSTALLED ON CURB SECTIONS, BRIDGE DECKS, APPROACH SLABS, INTERSECTING STREETS OR ROADWAYS, RESIDENTIAL OR COMMERCIAL DRIVEWAYS OR ACROSS TRANSVERSE JOINTS OF CONCRETE SHOULDERS.
2. RUMBLE STRIPS SHALL NOT BE INSTALLED ON A PAVED SHOULDER THAT IS USED AS A DECELERATION LANE FOR THE LENGTH DEEMED APPROPRIATE BY THE ENGINEER.
3. THE 4' OFFSET FROM THE EDGE LINE MAY BE INCREASED TO AVOID LONGITUDINAL JOINTS. IN ALL CASES, THE LATERAL DEVIATION FROM THE PLANNED OFFSET SHOULD BE KEPT TO A MINIMUM.
4. RUMBLE STRIPS SHALL BE MEASURED BY THE LINEAR FOOT LONGITUDINALLY ALONG THE SHOULDER. PAYMENT SHALL ONLY INCLUDE THAT PORTION OF THE SHOULDER ON WHICH RUMBLE STRIPS HAVE BEEN CONSTRUCTED. NO MEASUREMENT OR PAYMENT WILL BE MADE FOR GAPS, DRIVEWAYS, TURNOUTS, OR OTHER PUBLIC ROAD INTERSECTIONS WHERE RUMBLE STRIPS HAVE NOT BEEN CONSTRUCTED.
5. THE 3/8" DEPTH SHALL GENERALLY APPLY FOR THE ENTIRE 12' LENGTH. SOME VARIATION TO SUIT SHOULDER SLOPE BREAKS MAY BE NECESSARY.

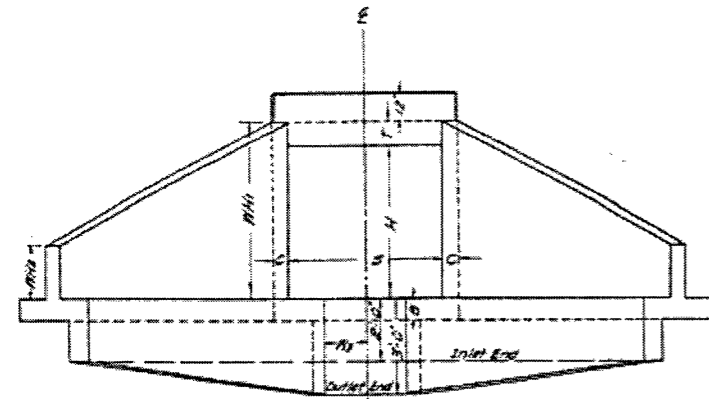


NOTE: GAP PATTERN SHALL BE ADJUSTED BY THE ENGINEER IN THE FIELD ALLOWING FOR DRIVEWAYS TO SERVE AS THE GAP.

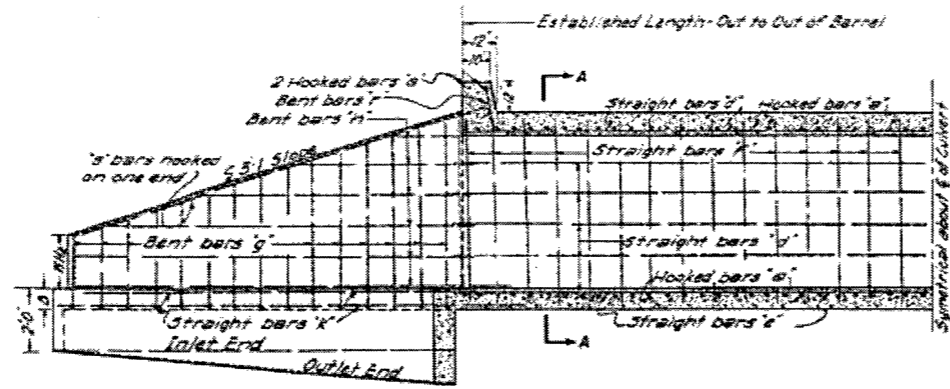
DETAIL FOR GAP PATTERN RUMBLE STRIP

DATE REVISED	DATE FILED	DATE REVISED	DATE FILED	FED. RD. DIST. NO.	STATE	FED. AID PROJ. NO.	SHEET NO.	TOTAL SHEETS
				6	ARK.			
				JOB NO.	110622		7	60

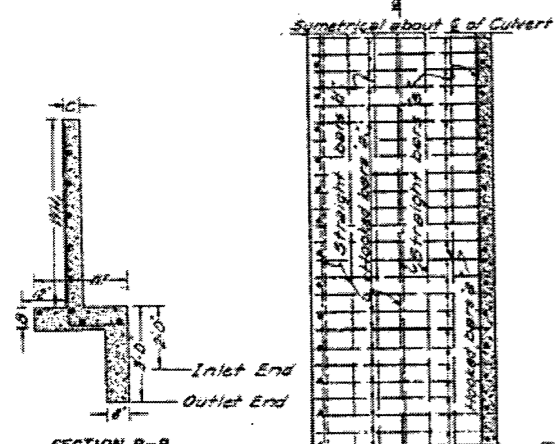
2 SPECIAL DETAILS



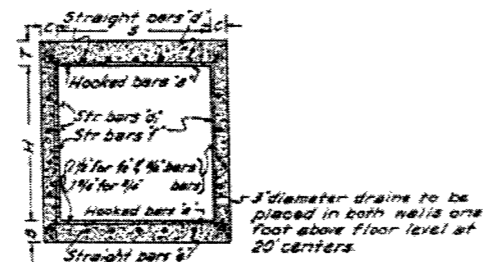
END ELEVATION



LONGITUDINAL SECTION

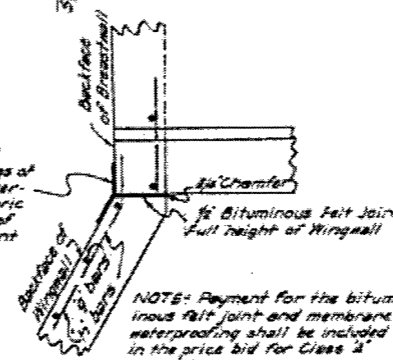


SECTION B-B



SECTION A-A

A membrane waterproofing 12" wide, consisting of three moppings of waterproofing asphalt and two alternate layers of treated cotton fabric shall be applied to the backface of abutment to cover expansion joint

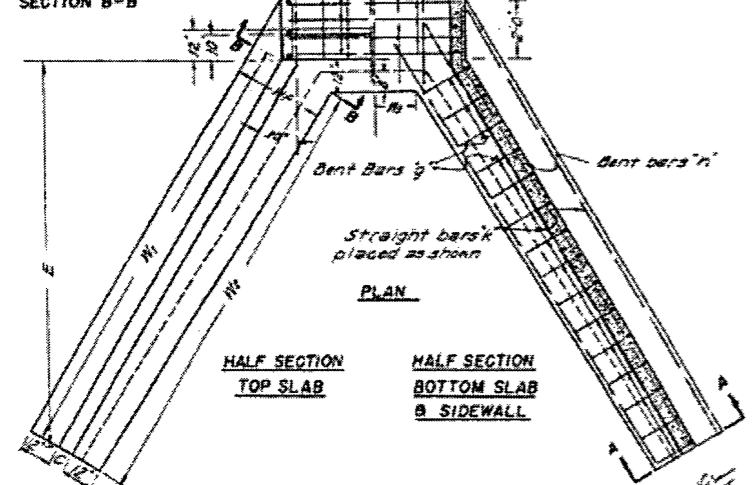


DETAIL OF EXPANSION JOINT FOR CULVERTS WHEN HEIGHT "H" IS 6' OR MORE SCALE 3/4"=1'-0"

DIMENSIONS AND QUANTITIES

SPAN	HEIGHT	AREA OF CONCRETE	MAXIMUM DEPTH OF WINGWALL	THICKNESS OF WINGWALL	MINIMUM HEIGHTS	MINIMUM WIDTH AT TOP	MINIMUM WIDTH AT BOTTOM	MINIMUM WIDTH OF WINGWALL AT END OF BARR	LENGTH OF WINGWALLS	INSIDE LENGTH OF WING FOOTING	FOOTING DIMENSION FROM E. OF BOX	CONCRETE CU YD	STEEL LB.
5	4	10	7	6	10	10	10	10	10	10	10	10	10
5	4	10	7	6	10	10	10	10	10	10	10	10	10
5	5	10	7	6	10	10	10	10	10	10	10	10	10
5	6	10	7	6	10	10	10	10	10	10	10	10	10
5	7	10	7	6	10	10	10	10	10	10	10	10	10
5	8	10	7	6	10	10	10	10	10	10	10	10	10
5	9	10	7	6	10	10	10	10	10	10	10	10	10
5	10	10	7	6	10	10	10	10	10	10	10	10	10
5	11	10	7	6	10	10	10	10	10	10	10	10	10
5	12	10	7	6	10	10	10	10	10	10	10	10	10
5	13	10	7	6	10	10	10	10	10	10	10	10	10
5	14	10	7	6	10	10	10	10	10	10	10	10	10
5	15	10	7	6	10	10	10	10	10	10	10	10	10
5	16	10	7	6	10	10	10	10	10	10	10	10	10
5	17	10	7	6	10	10	10	10	10	10	10	10	10
5	18	10	7	6	10	10	10	10	10	10	10	10	10
5	19	10	7	6	10	10	10	10	10	10	10	10	10
5	20	10	7	6	10	10	10	10	10	10	10	10	10
5	21	10	7	6	10	10	10	10	10	10	10	10	10
5	22	10	7	6	10	10	10	10	10	10	10	10	10
5	23	10	7	6	10	10	10	10	10	10	10	10	10
5	24	10	7	6	10	10	10	10	10	10	10	10	10
5	25	10	7	6	10	10	10	10	10	10	10	10	10
5	26	10	7	6	10	10	10	10	10	10	10	10	10
5	27	10	7	6	10	10	10	10	10	10	10	10	10
5	28	10	7	6	10	10	10	10	10	10	10	10	10
5	29	10	7	6	10	10	10	10	10	10	10	10	10
5	30	10	7	6	10	10	10	10	10	10	10	10	10

LAB NOTE: In computing quantities of steel from the above table, add one lap for culverts up to 50'-0" in length and one lap for each additional 25'-0" in length.
 SPECIFICATION: Arkansas Standard Road and Bridge Specifications
 REINFORCING STEEL: To be deformed bars of structural or intermediate grade.
 CHAMFER: All exposed corners to have 3/4" Chamfer
 CONCRETE: All concrete to be Class A
 REINFORCING STEEL: All to be deformed bars of intermediate or rail grade on all Interstate Highways.



PLAN
 HALF SECTION TOP SLAB
 HALF SECTION BOTTOM SLAB & SIDEWALL

STEEL SCHEDULE FOR CULVERTS 30'-0" IN LENGTH - CUT TO OUT OF BARR

SPAN	HEIGHT	STRAIGHT				STRAIGHT Vertical bars in Sidewalls		Vertical bars in back face of Wingwall bent into bottom of footing		Horizontal bars in Wingwalls		Dowels in Footings		In top of each Wingwall	
		In Bottom of Top Slab	In Sidewalls	In Top of Bottom Slab	In Bottom of Top Slab	Min	Max	Min	Max	Min	Max	Min	Max	Min	Max
5	4	10	7	6	10	10	10	10	10	10	10	10	10	10	
5	5	10	7	6	10	10	10	10	10	10	10	10	10	10	
5	6	10	7	6	10	10	10	10	10	10	10	10	10	10	
5	7	10	7	6	10	10	10	10	10	10	10	10	10	10	
5	8	10	7	6	10	10	10	10	10	10	10	10	10	10	
5	9	10	7	6	10	10	10	10	10	10	10	10	10	10	
5	10	10	7	6	10	10	10	10	10	10	10	10	10	10	
5	11	10	7	6	10	10	10	10	10	10	10	10	10	10	
5	12	10	7	6	10	10	10	10	10	10	10	10	10	10	
5	13	10	7	6	10	10	10	10	10	10	10	10	10	10	
5	14	10	7	6	10	10	10	10	10	10	10	10	10	10	
5	15	10	7	6	10	10	10	10	10	10	10	10	10	10	
5	16	10	7	6	10	10	10	10	10	10	10	10	10	10	
5	17	10	7	6	10	10	10	10	10	10	10	10	10	10	
5	18	10	7	6	10	10	10	10	10	10	10	10	10	10	
5	19	10	7	6	10	10	10	10	10	10	10	10	10	10	
5	20	10	7	6	10	10	10	10	10	10	10	10	10	10	
5	21	10	7	6	10	10	10	10	10	10	10	10	10	10	
5	22	10	7	6	10	10	10	10	10	10	10	10	10	10	
5	23	10	7	6	10	10	10	10	10	10	10	10	10	10	
5	24	10	7	6	10	10	10	10	10	10	10	10	10	10	
5	25	10	7	6	10	10	10	10	10	10	10	10	10	10	
5	26	10	7	6	10	10	10	10	10	10	10	10	10	10	
5	27	10	7	6	10	10	10	10	10	10	10	10	10	10	
5	28	10	7	6	10	10	10	10	10	10	10	10	10	10	
5	29	10	7	6	10	10	10	10	10	10	10	10	10	10	
5	30	10	7	6	10	10	10	10	10	10	10	10	10	10	

NOTE: Lengths given above do not include Lap

REVISIONS

12-18-56	Redrawn
Nov. 1957	Military Loading

AASHTO DESIGN LIVE LOADING H-20-44
 UNIT STRESSES
 Concrete (n=15) - 840 Lbs per Sq. In.
 Reinf. Steel (St-42) - 18,000 Lbs per Sq. In.
 SPECIAL MILITARY LOADING
 Add'l Loading For Interstate Highways
 2-20,000 LB. AXLES @ 5'-0" CTR.
 Concrete (n=15) - 840 Lbs per Sq. In.
 Reinf. Steel (Int or Rail) - 20,000 Lbs per Sq. In.

DATE REVISED	DATE FILED	DATE REVISED	DATE FILED	FED. RD. DIST. NO.	STATE	FED. AID PROJ. NO.	SHEET NO.	TOTAL SHEETS
				6	ARK.			
						JOB NO. 110622	8	60

② TEMPORARY EROSION CONTROL DETAILS

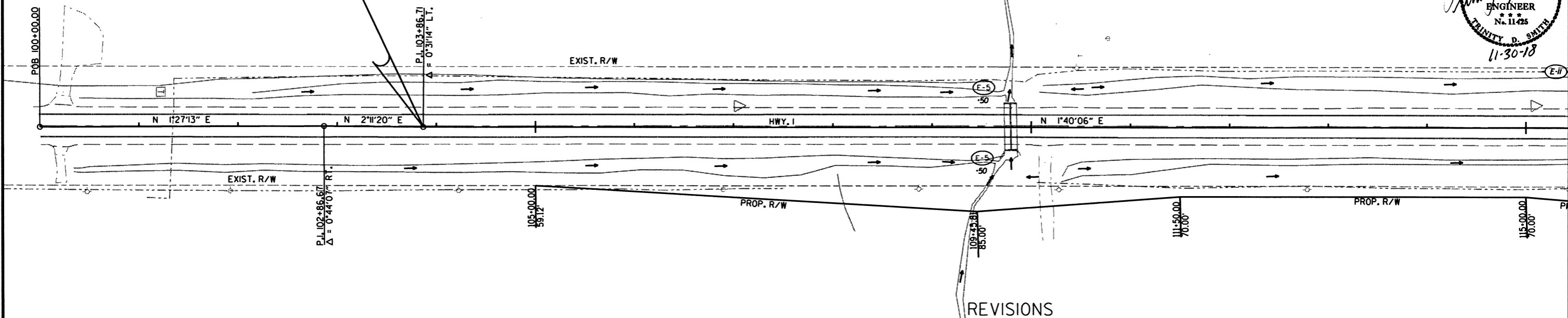


CLEARING & GRUBBING
 SAND BAG DITCH CHECKS (E-5)
 26 LOCATIONS = 572 BAGS
 SILT FENCE (E-11)
 10 LOCATION = 1775 LIN. FT.

STA. 103+86.71
 BEGIN JOB #10622
 LOG MILE 12.30

105

110



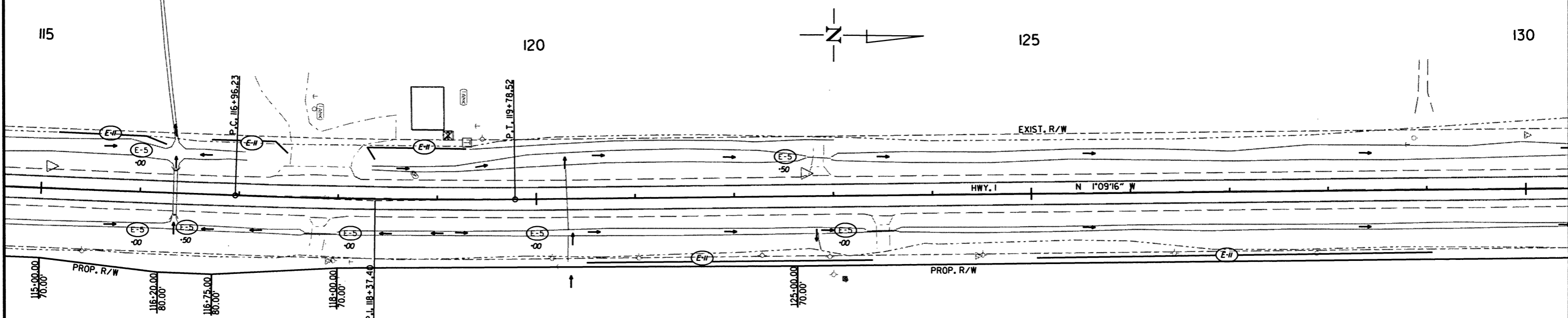
DATE OF REVISION	REVISION

LEGEND

(E-5) = SAND BAG DITCH CHECKS

(E-11) = SILT FENCE

NOTE: PERIMETER CONTROLS SHALL BE PLACED AS CLEARING AND GRUBBING OPERATIONS ARE STARTED.



115

120

125

130

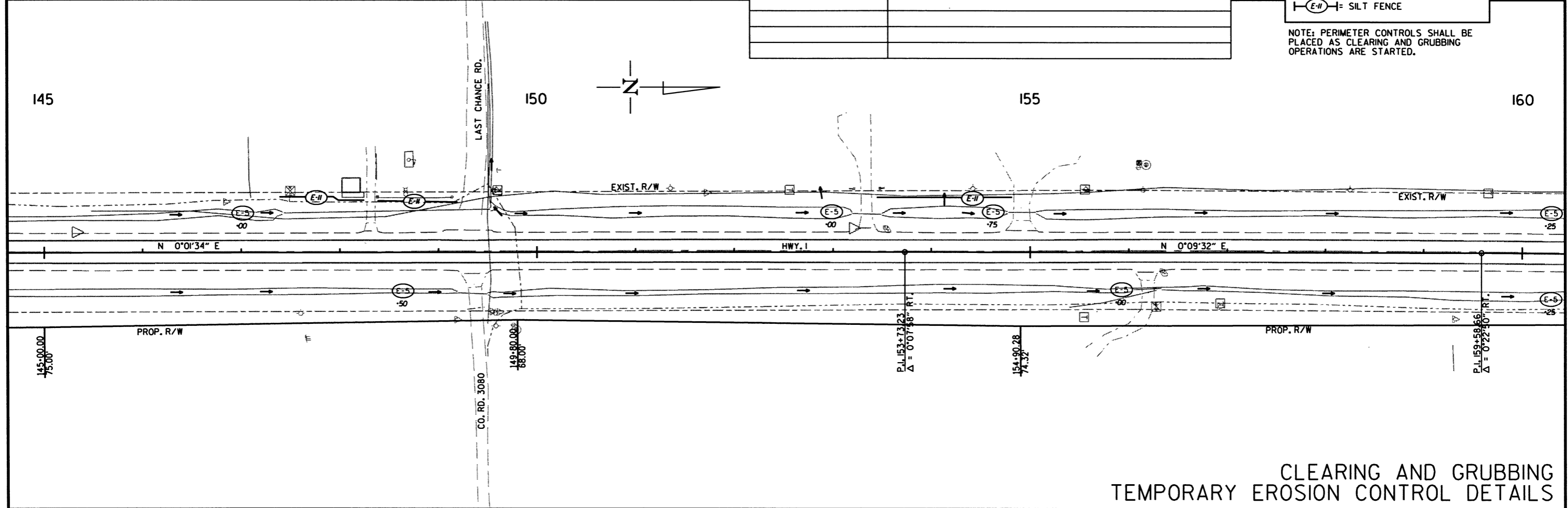
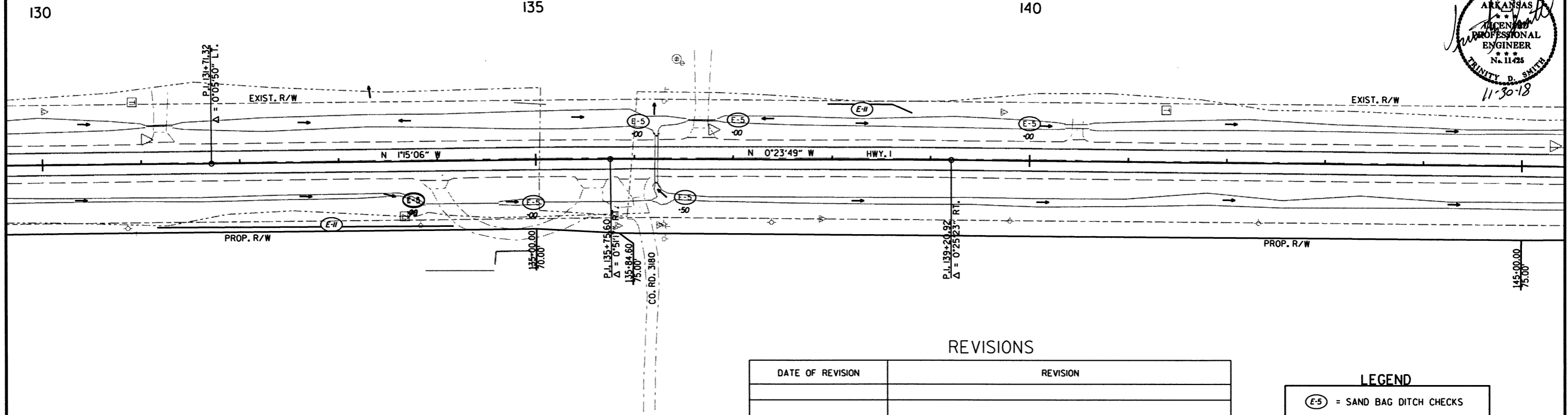
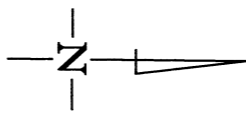
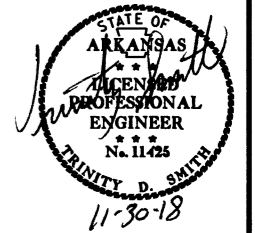
11/2/2018

R110622.DGN

CLEARING AND GRUBBING
 TEMPORARY EROSION CONTROL DETAILS

DATE REVISED	DATE FILED	DATE REVISED	DATE FILED	FED. DIST. NO.	STATE	FED. AID PROJ. NO.	SHEET NO.	TOTAL SHEETS
				6	ARK.		9	60
				JOB NO.		110622	9	60

② TEMPORARY EROSION CONTROL DETAILS



REVISIONS

DATE OF REVISION	REVISION

LEGEND

	= SAND BAG DITCH CHECKS
	= SILT FENCE

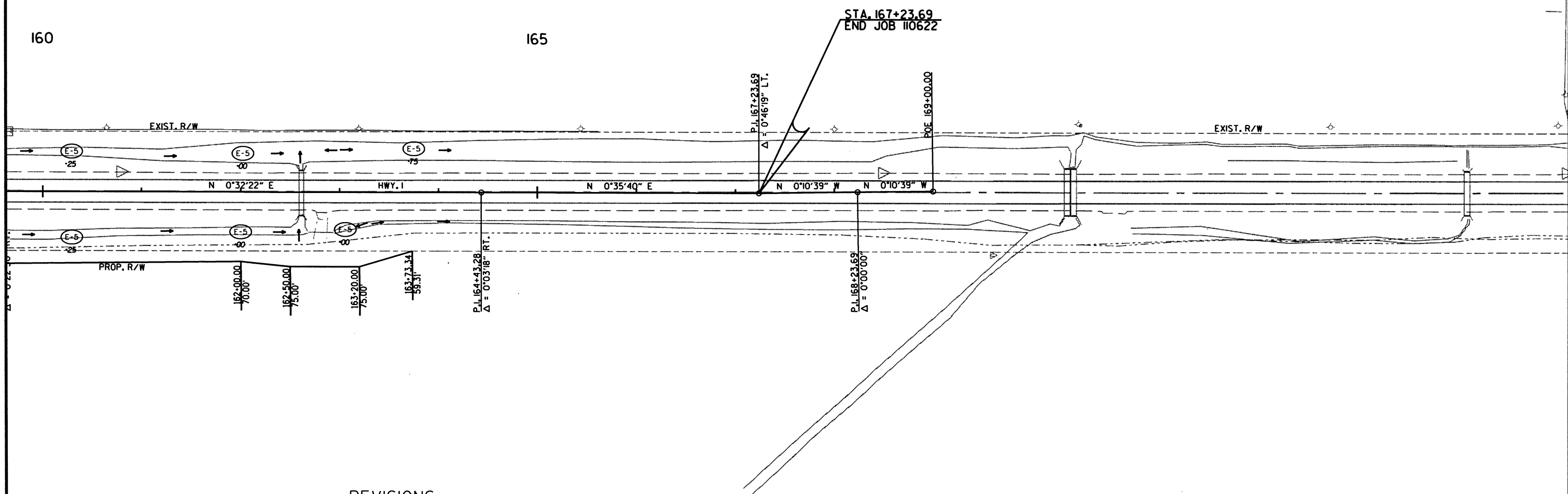
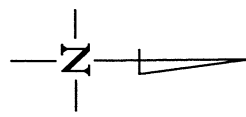
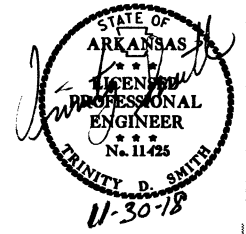
NOTE: PERIMETER CONTROLS SHALL BE PLACED AS CLEARING AND GRUBBING OPERATIONS ARE STARTED.

11/2/2018 R110622.DGN

CLEARING AND GRUBBING
TEMPORARY EROSION CONTROL DETAILS

DATE REVISED	DATE FILMED	DATE REVISED	DATE FILMED	FED. AID DIST. NO.	STATE	FED. AID PROJ. NO.	SHEET NO.	TOTAL SHEETS
				6	ARK.		10	60
				JOB NO. 110622				

② TEMPORARY EROSION CONTROL DETAILS



REVISIONS

DATE OF REVISION	REVISION

LEGEND

- = SAND BAG DITCH CHECKS
- = SILT FENCE

NOTE: PERIMETER CONTROLS SHALL BE PLACED AS CLEARING AND GRUBBING OPERATIONS ARE STARTED.

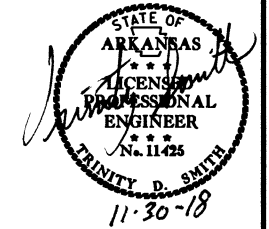
CLEARING AND GRUBBING
TEMPORARY EROSION CONTROL DETAILS

11/2/2018

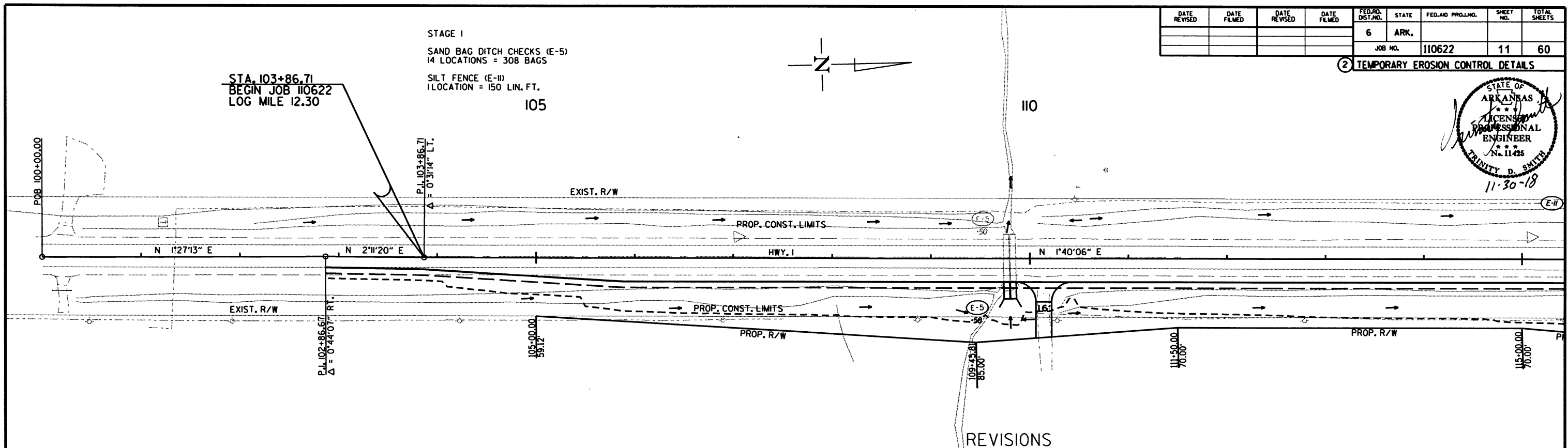
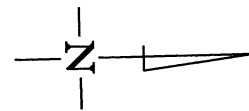
R110622.DGN

DATE REVISED	DATE FILED	DATE REVISED	DATE FILED	FED. DIST. NO.	STATE	FED. AID PROJ. NO.	SHEET NO.	TOTAL SHEETS
				6	ARK.		11	60
JOB NO. 110622							11	60

2 TEMPORARY EROSION CONTROL DETAILS



STAGE I
 SAND BAG DITCH CHECKS (E-5)
 14 LOCATIONS = 308 BAGS
 SILT FENCE (E-11)
 1 LOCATION = 150 LIN. FT.



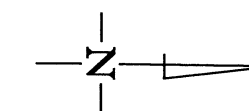
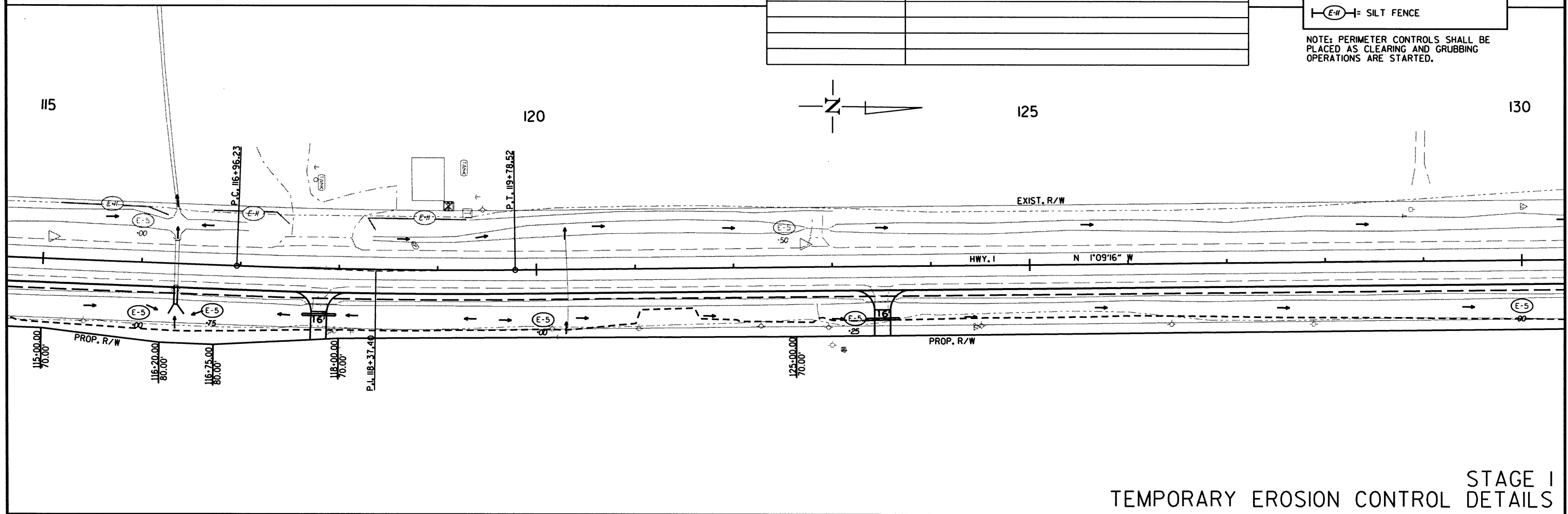
REVISIONS

DATE OF REVISION	REVISION

LEGEND

(E-5) = SAND BAG DITCH CHECKS
 (E-11) = SILT FENCE

NOTE: PERIMETER CONTROLS SHALL BE PLACED AS CLEARING AND GRUBBING OPERATIONS ARE STARTED.

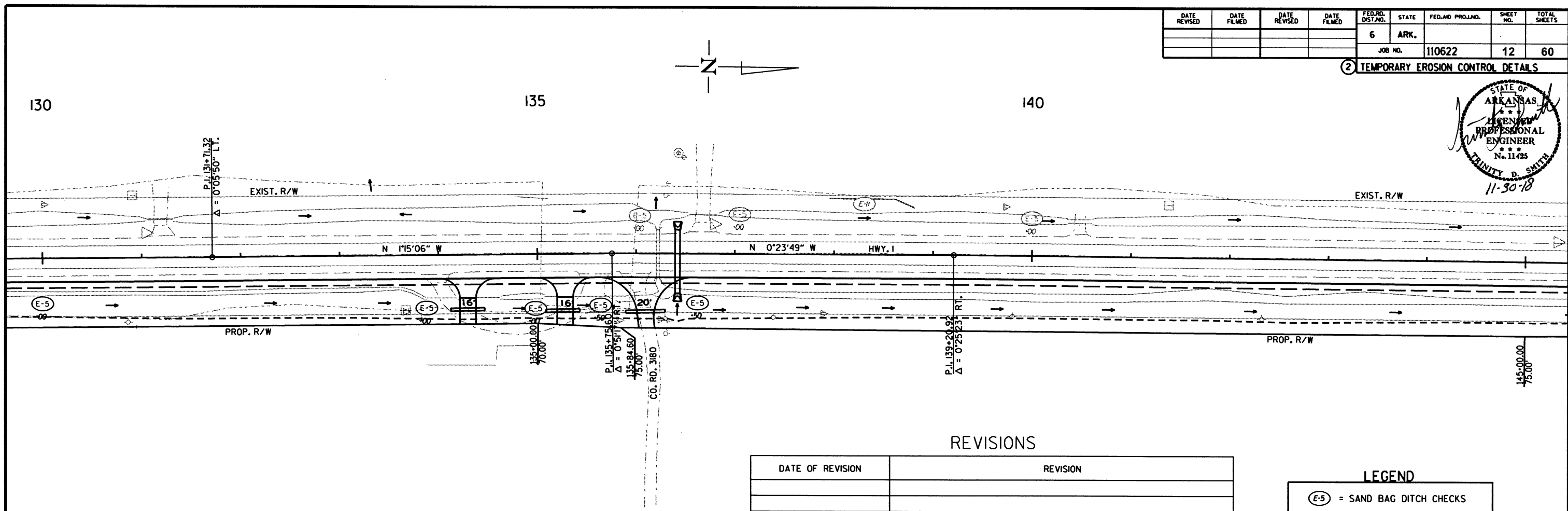


11/2/2018

R110622.DCN

DATE REVISED	DATE FILMED	DATE REVISED	DATE FILMED	FED. RD. DIST. NO.	STATE	FED. AID PROJ. NO.	SHEET NO.	TOTAL SHEETS
				6	ARK.		12	60
				JOB NO.		110622	12	60

② TEMPORARY EROSION CONTROL DETAILS



REVISIONS

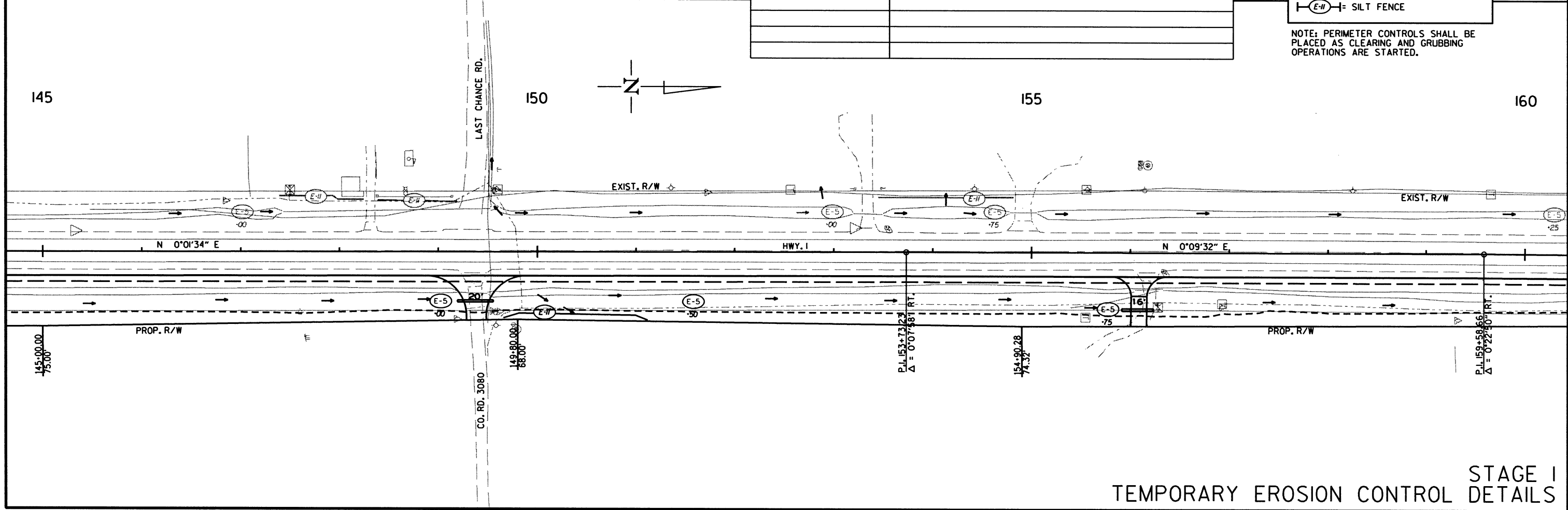
DATE OF REVISION	REVISION

LEGEND

(E-5) = SAND BAG DITCH CHECKS

(E-H) = SILT FENCE

NOTE: PERIMETER CONTROLS SHALL BE PLACED AS CLEARING AND GRUBBING OPERATIONS ARE STARTED.

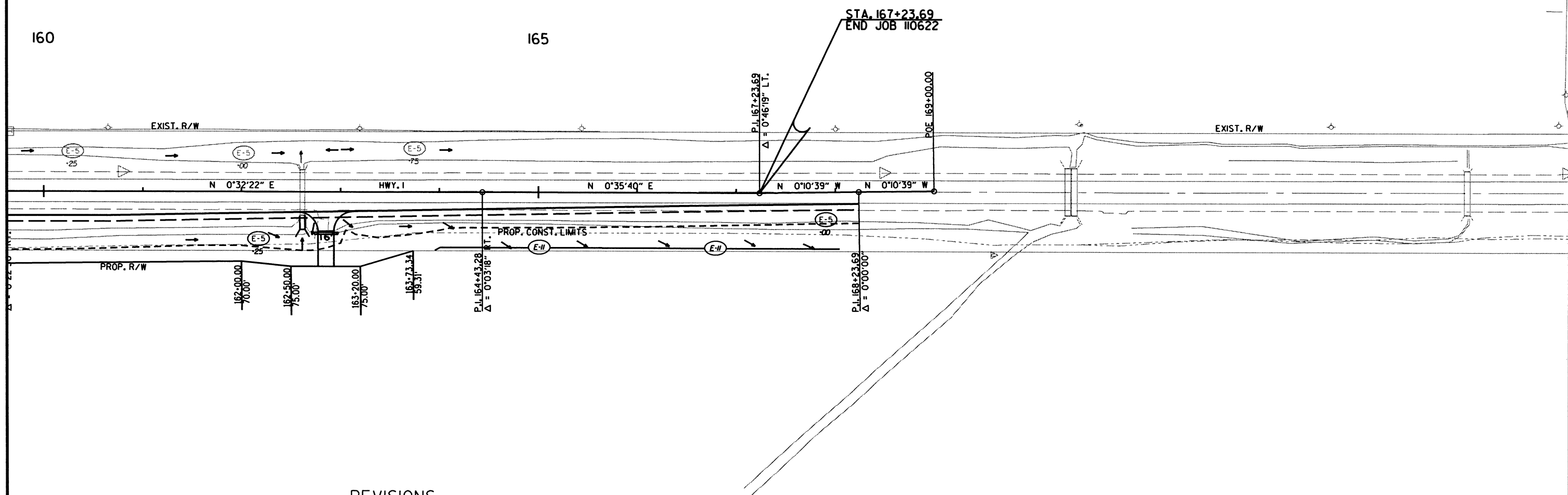
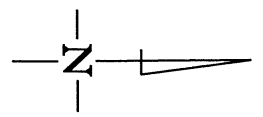


STAGE I
TEMPORARY EROSION CONTROL DETAILS

11/2/2018
R110622.DGN

DATE REVISED	DATE FILMED	DATE REVISED	DATE FILMED	FED. RD. DIST. NO.	STATE	FED. AID PROJ. NO.	SHEET NO.	TOTAL SHEETS
				6	ARK.			
				JOB NO.	110622		13	60

② TEMPORARY EROSION CONTROL DETAILS



REVISIONS

DATE OF REVISION	REVISION

LEGEND

- (E-5) = SAND BAG DITCH CHECKS
- (E-11) = SILT FENCE

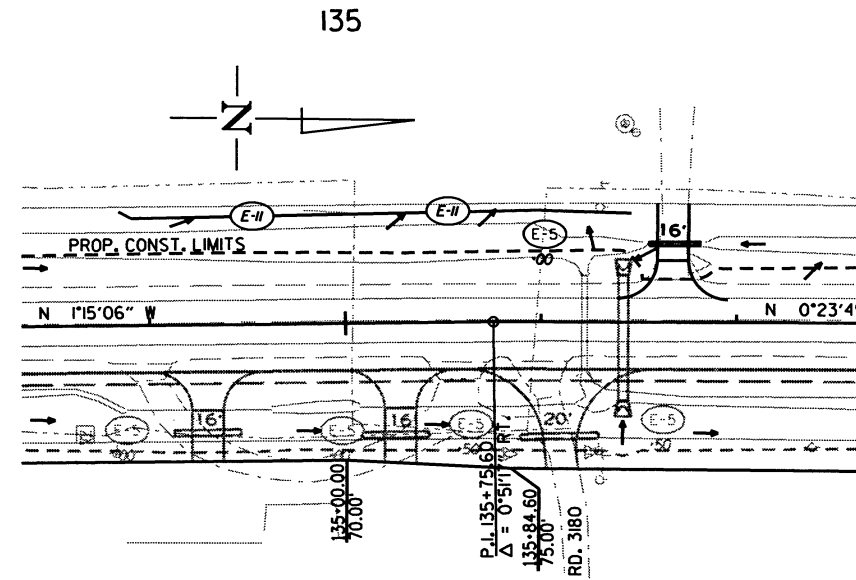
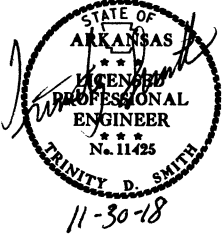
NOTE: PERIMETER CONTROLS SHALL BE PLACED AS CLEARING AND GRUBBING OPERATIONS ARE STARTED.

11/2/2018

R110622.DGN

DATE REVISED	DATE FILMED	DATE REVISED	DATE FILMED	FED. RD. DIST. NO.	STATE	FED. AID PROJ. NO.	SHEET NO.	TOTAL SHEETS
				6	ARK.			
				JOB NO.	110622		14	60

② TEMPORARY EROSION CONTROL DETAILS



STAGE 2
 SAND BAG DITCH CHECKS (E-5)
 2 LOCATIONS = 44 BAGS
 SILT FENCE (E-II)
 1 LOCATION = 275 LIN. FT.

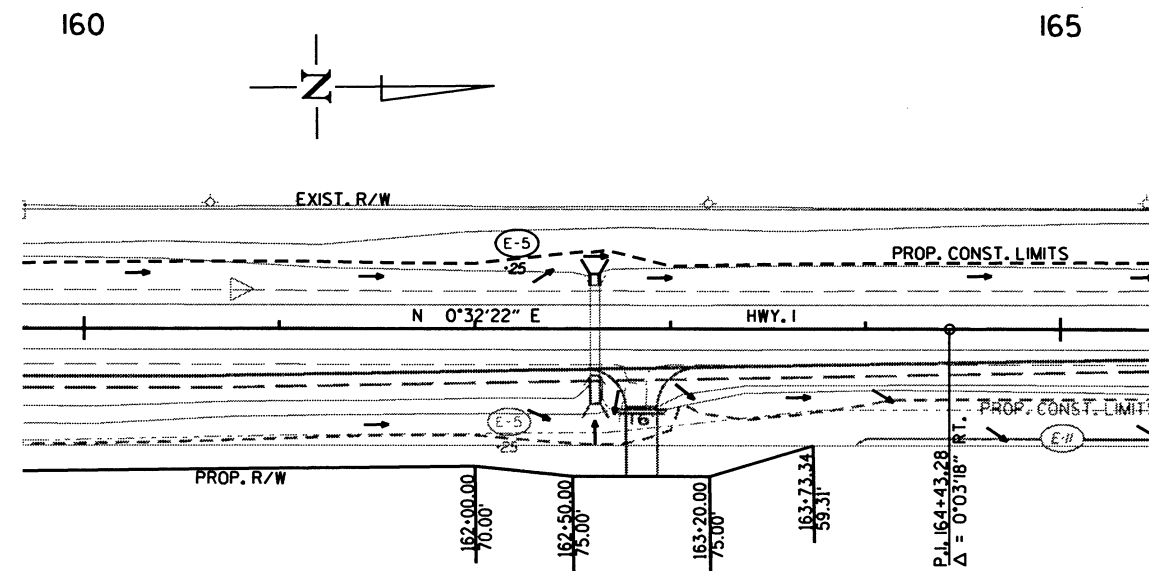
REVISIONS	
DATE OF REVISION	REVISION

LEGEND

(E-5) = SAND BAG DITCH CHECKS

(E-II) = SILT FENCE

NOTE: PERIMETER CONTROLS SHALL BE PLACED AS CLEARING AND GRUBBING OPERATIONS ARE STARTED.



11/2/2018

R110622.DGN

DATE REVISED	DATE FILED	DATE REVISED	DATE FILED	FED. RD. DIST. NO.	STATE	FED. AID PROJ. NO.	SHEET NO.	TOTAL SHEETS
				6	ARK.		15	60
				JOB NO. 110622				

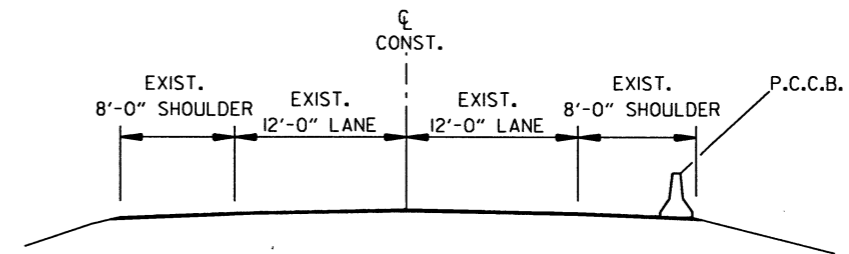
2 MAINTENANCE OF TRAFFIC DETAILS



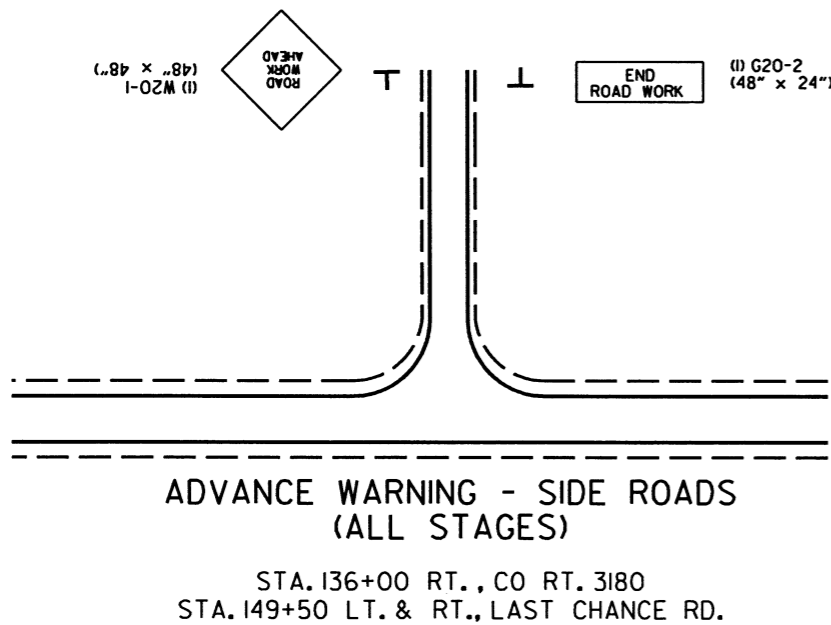
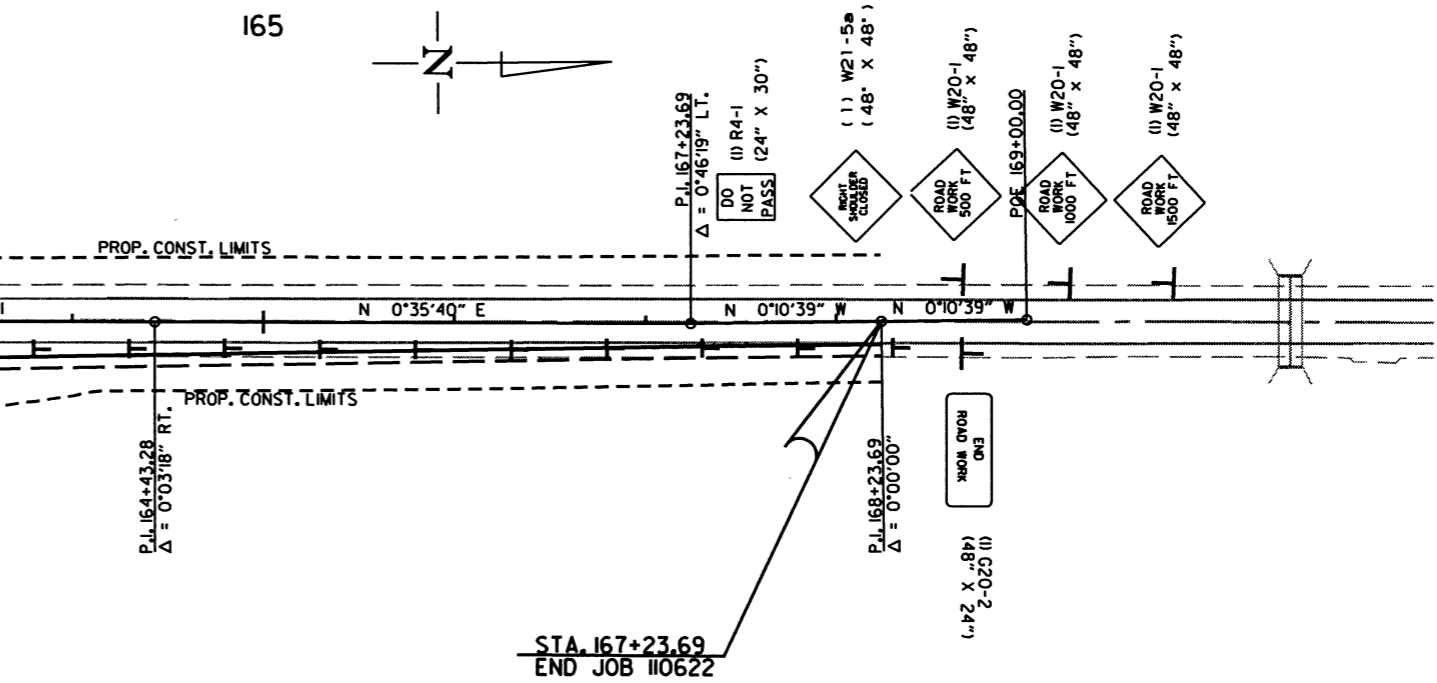
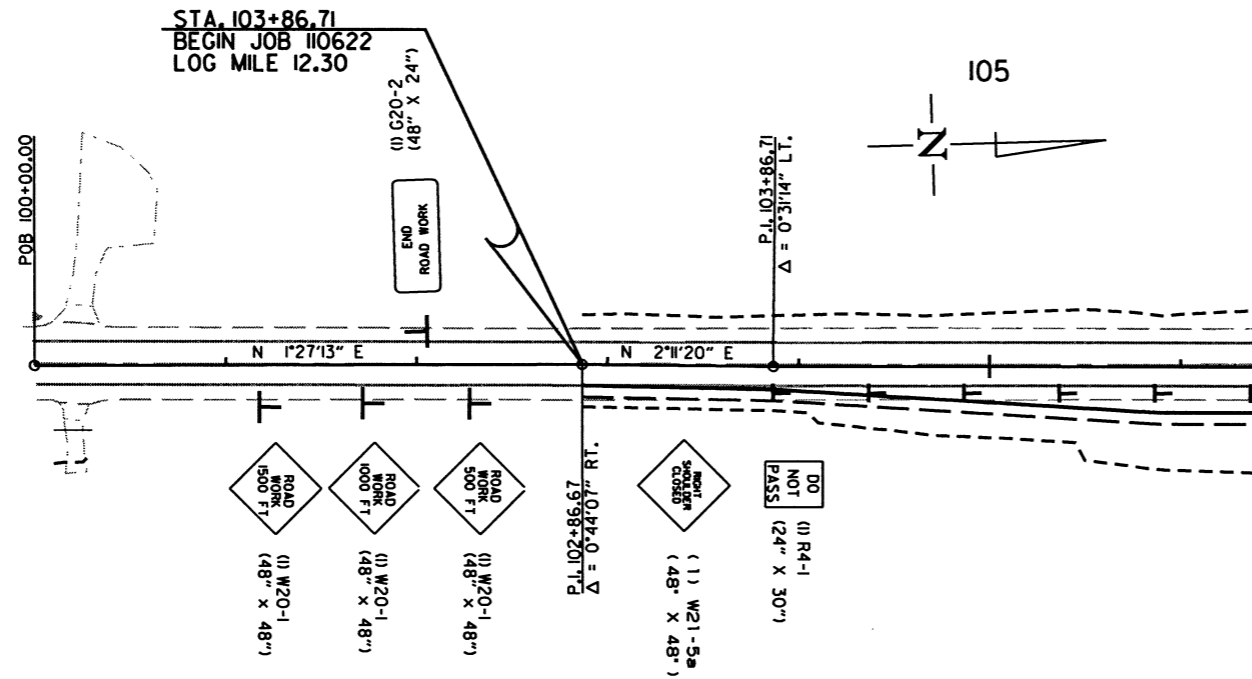
SEQUENCE OF CONSTRUCTION

STAGE 1:
 MAINTAIN TRAFFIC ON EXISTING ROADWAY.
 CONSTRUCT RT. SIDE OF PROPOSED HWY. 1.
 CONSTRUCT AND EXTEND BOX CULVERTS AND PIPE CULVERTS RT.

STAGE 2:
 MAINTAIN TRAFFIC ON EXISTING ROADWAY.
 EXTEND DRAINAGE STRUCTURES ON LT.
 PLACE FINAL SURFACE COURSE.
 PLACE PERMANENT PAVEMENT MARKINGS.

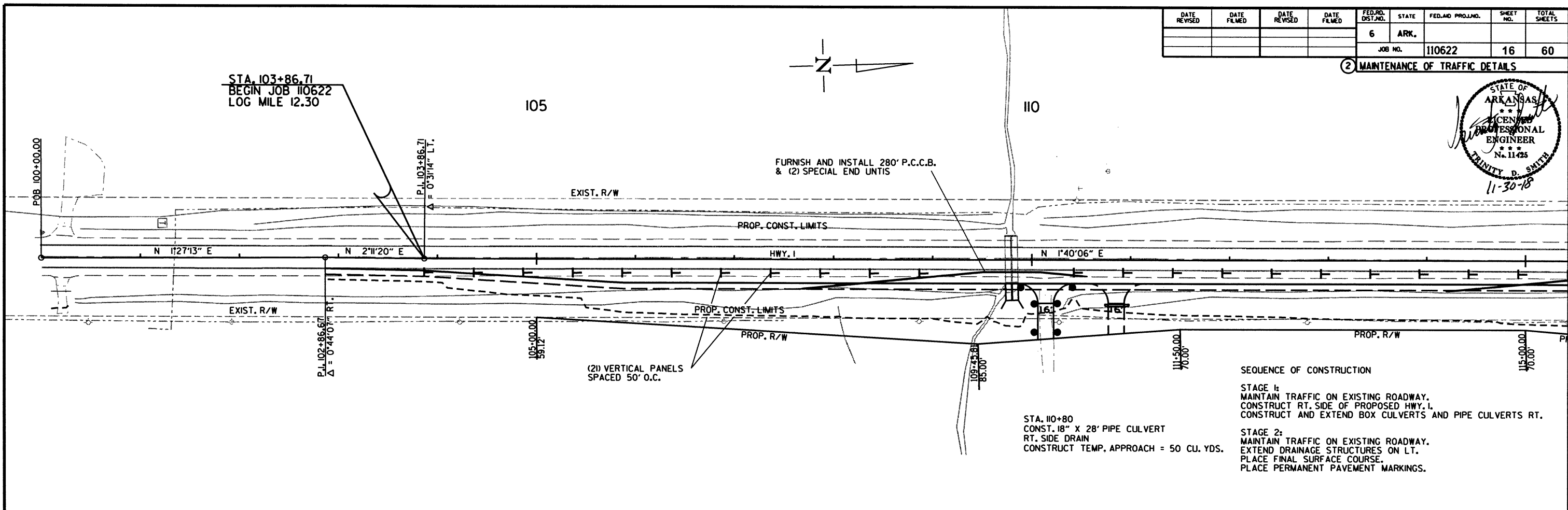
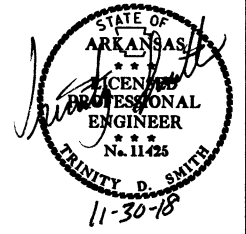


PRECAST CONCRETE BARRIER WALL DETAIL
 (SHOWN IN DIRECTION OF TRAFFIC)



DATE REVISED	DATE FILMED	DATE REVISED	DATE FILMED	FED. RD. DIST. NO.	STATE	FED. AID PROJ. NO.	SHEET NO.	TOTAL SHEETS
				6	ARK.			
				JOB NO. 110622		16		60

② MAINTENANCE OF TRAFFIC DETAILS

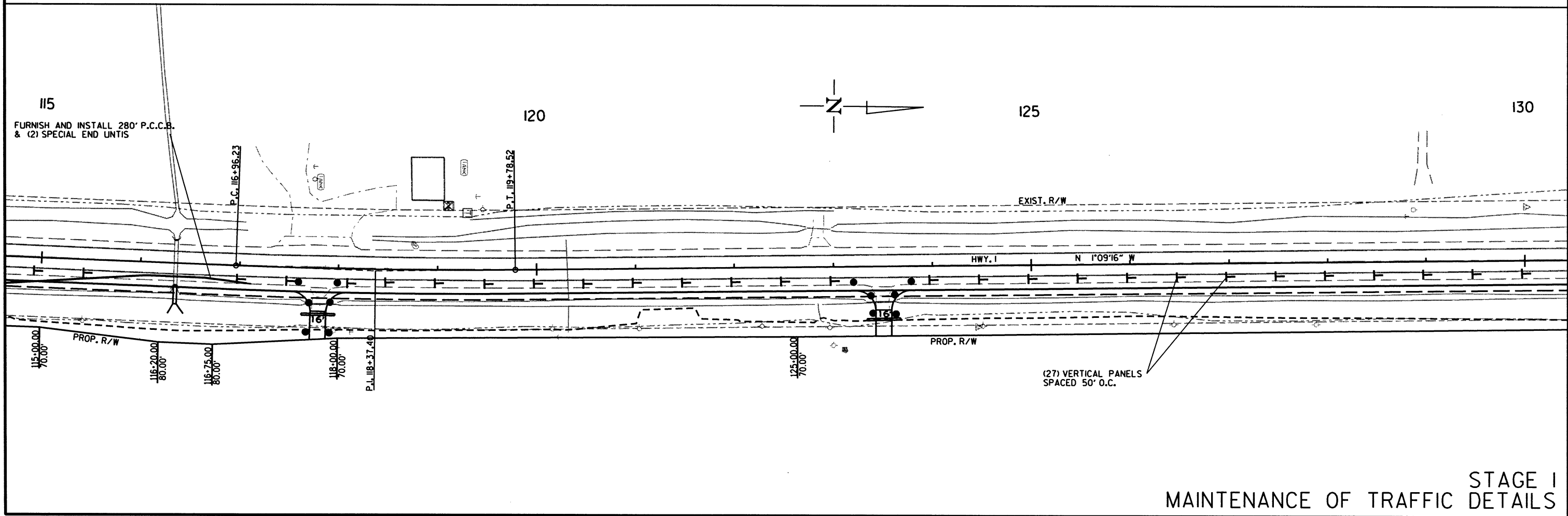


SEQUENCE OF CONSTRUCTION

STAGE 1:
 MAINTAIN TRAFFIC ON EXISTING ROADWAY.
 CONSTRUCT RT. SIDE OF PROPOSED HWY. 1.
 CONSTRUCT AND EXTEND BOX CULVERTS AND PIPE CULVERTS RT.

STAGE 2:
 MAINTAIN TRAFFIC ON EXISTING ROADWAY.
 EXTEND DRAINAGE STRUCTURES ON LT.
 PLACE FINAL SURFACE COURSE.
 PLACE PERMANENT PAVEMENT MARKINGS.

STA. 110+80
 CONST. 18" X 28' PIPE CULVERT
 RT. SIDE DRAIN
 CONSTRUCT TEMP. APPROACH = 50 CU. YDS.



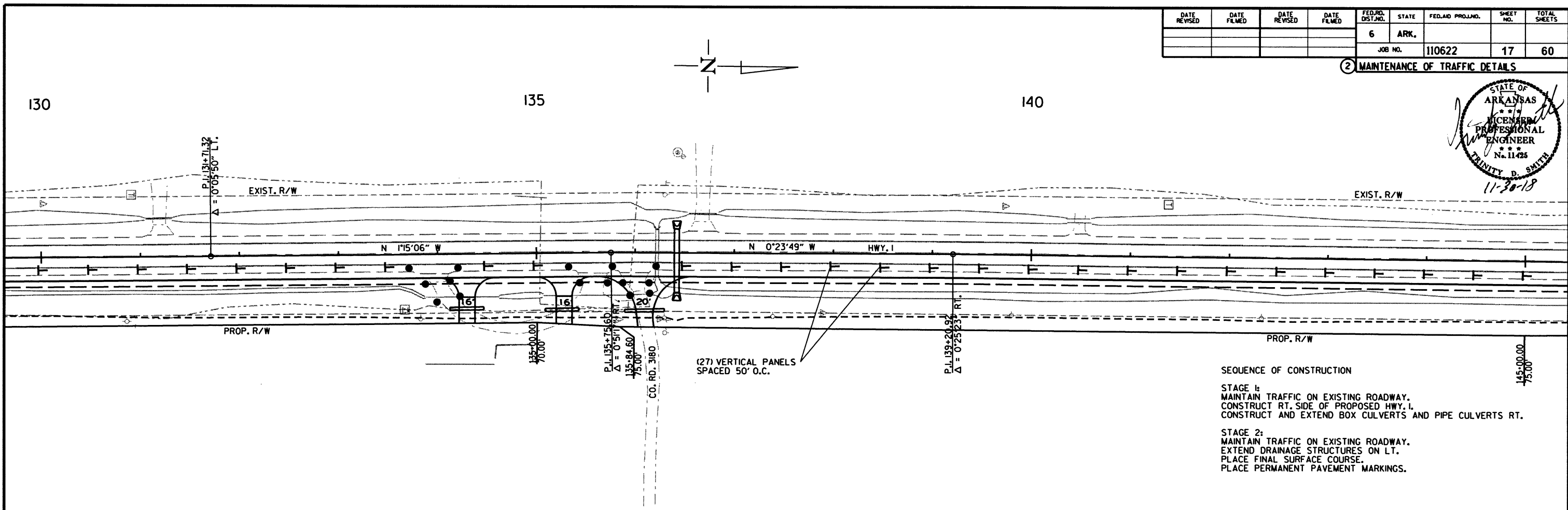
(27) VERTICAL PANELS
 SPACED 50' O.C.

STAGE 1
 MAINTENANCE OF TRAFFIC DETAILS

11/2/2018
 R110622.DGN

DATE REVISED	DATE FILMED	DATE REVISED	DATE FILMED	FED. RD. DIST. NO.	STATE	FED. AID PROJ. NO.	SHEET NO.	TOTAL SHEETS
				6	ARK.		17	60
				JOB NO.		110622	17	60

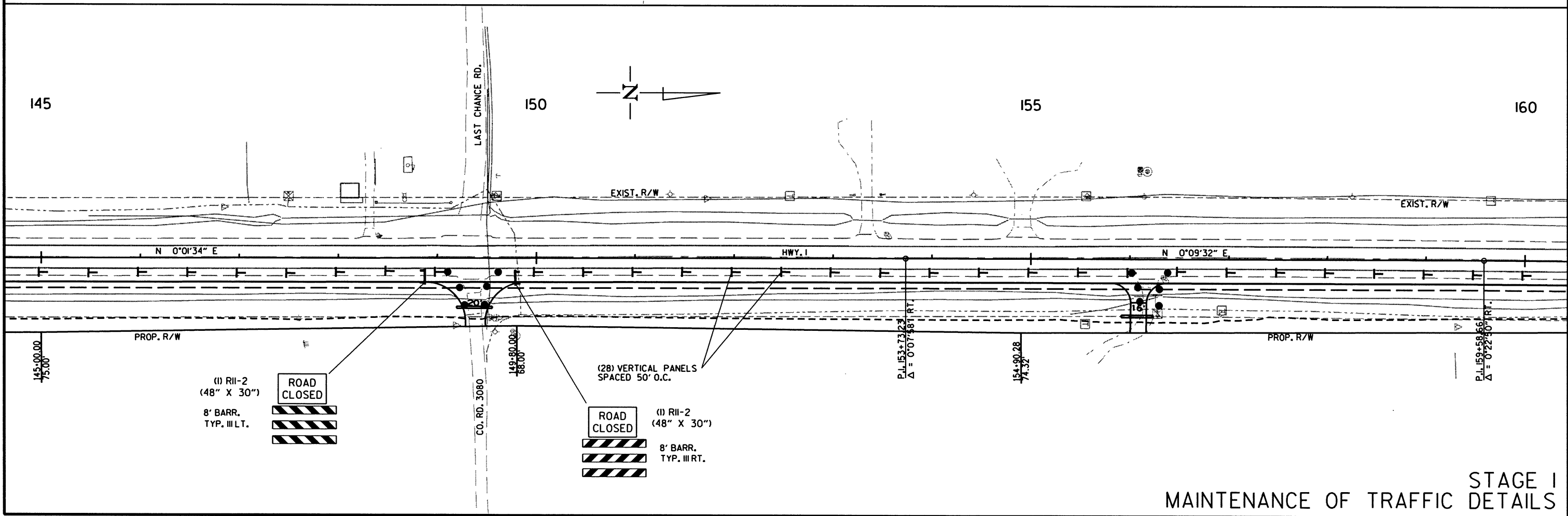
② MAINTENANCE OF TRAFFIC DETAILS



SEQUENCE OF CONSTRUCTION

STAGE 1:
 MAINTAIN TRAFFIC ON EXISTING ROADWAY.
 CONSTRUCT RT. SIDE OF PROPOSED HWY. 1.
 CONSTRUCT AND EXTEND BOX CULVERTS AND PIPE CULVERTS RT.

STAGE 2:
 MAINTAIN TRAFFIC ON EXISTING ROADWAY.
 EXTEND DRAINAGE STRUCTURES ON LT.
 PLACE FINAL SURFACE COURSE.
 PLACE PERMANENT PAVEMENT MARKINGS.

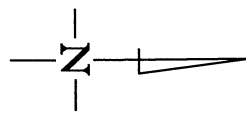
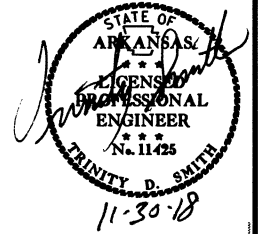


STAGE I
 MAINTENANCE OF TRAFFIC DETAILS

11/2/2018
 R110622.DGN

DATE REVISED	DATE FILED	DATE REVISED	DATE FILED	FED. RD. DIST. NO.	STATE	FED. AID PROJ. NO.	SHEET NO.	TOTAL SHEETS
				6	ARK.		18	60
				JOB NO. 110622				

② MAINTENANCE OF TRAFFIC DETAILS



160

165

STA. 167+23.69
END JOB 110622

FURNISH AND INSTALL 280' P.C.C.B.
& (2) SPECIAL END UNITS
EXIST. R/W

EXIST. R/W

N 0°32'22" E

HWY. 1

N 0°35'40" E

N 0°10'39" W

N 0°10'39" W

PROP. CONST. LIMITS

PROP. R/W

162+00.00
70.00'

162+50.00
75.00'

163+20.00
75.00'

163+73.34
59.31'

P.L. 164+43.28
Δ = 0°03'18" RT.

((4) VERTICAL PANELS
SPACED 50' O.C.

P.L. 168+23.69
Δ = 0°00'00"

P.O.E. 169+00.00

STA. 163+80
CONST. 18" X 32' PIPE CULVERT
RT. SIDE DRAIN
CONSTRUCT TEMP. APPROACH = 50 CU. YDS.

SEQUENCE OF CONSTRUCTION

STAGE 1:
MAINTAIN TRAFFIC ON EXISTING ROADWAY.
CONSTRUCT RT. SIDE OF PROPOSED HWY. 1.
CONSTRUCT AND EXTEND BOX CULVERTS AND PIPE CULVERTS RT.

STAGE 2:
MAINTAIN TRAFFIC ON EXISTING ROADWAY.
EXTEND DRAINAGE STRUCTURES ON LT.
PLACE FINAL SURFACE COURSE.
PLACE PERMANENT PAVEMENT MARKINGS.

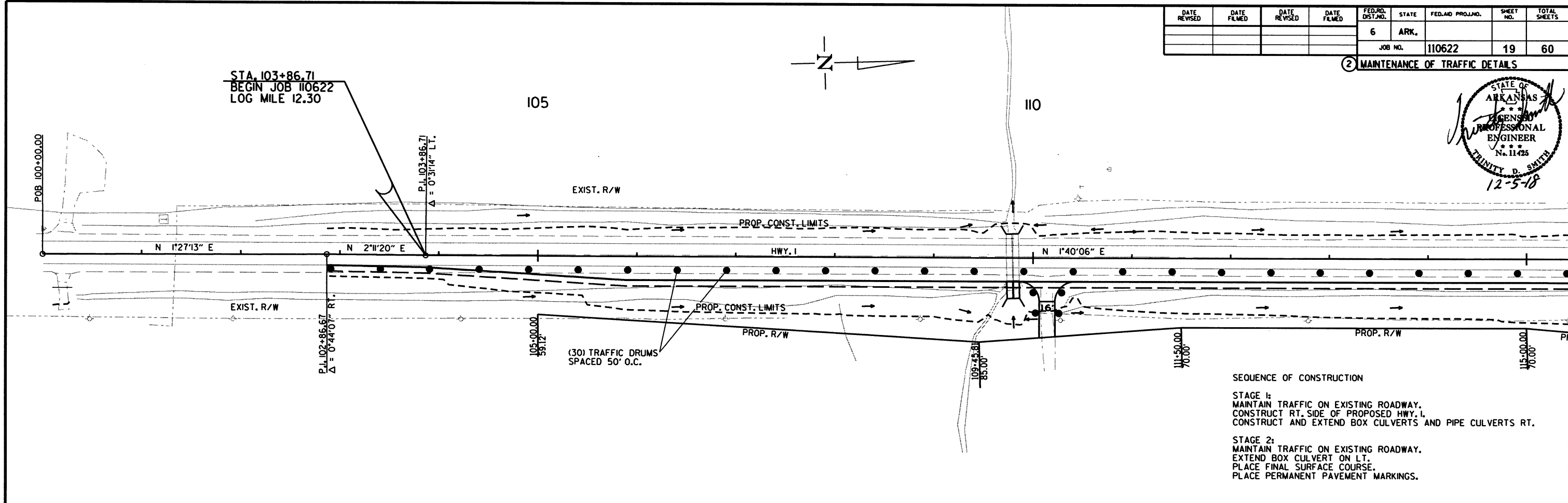
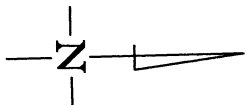
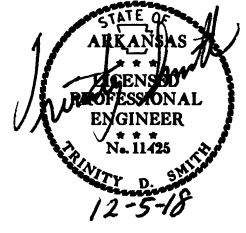
11/2/2018

R110622.DGN

STAGE 1
MAINTENANCE OF TRAFFIC DETAILS

DATE REVISED	DATE FILMED	DATE REVISED	DATE FILMED	FED. RD. DIST. NO.	STATE	FED. AID PROJ. NO.	SHEET NO.	TOTAL SHEETS
				6	ARK.			
				JOB NO.	110622		19	60

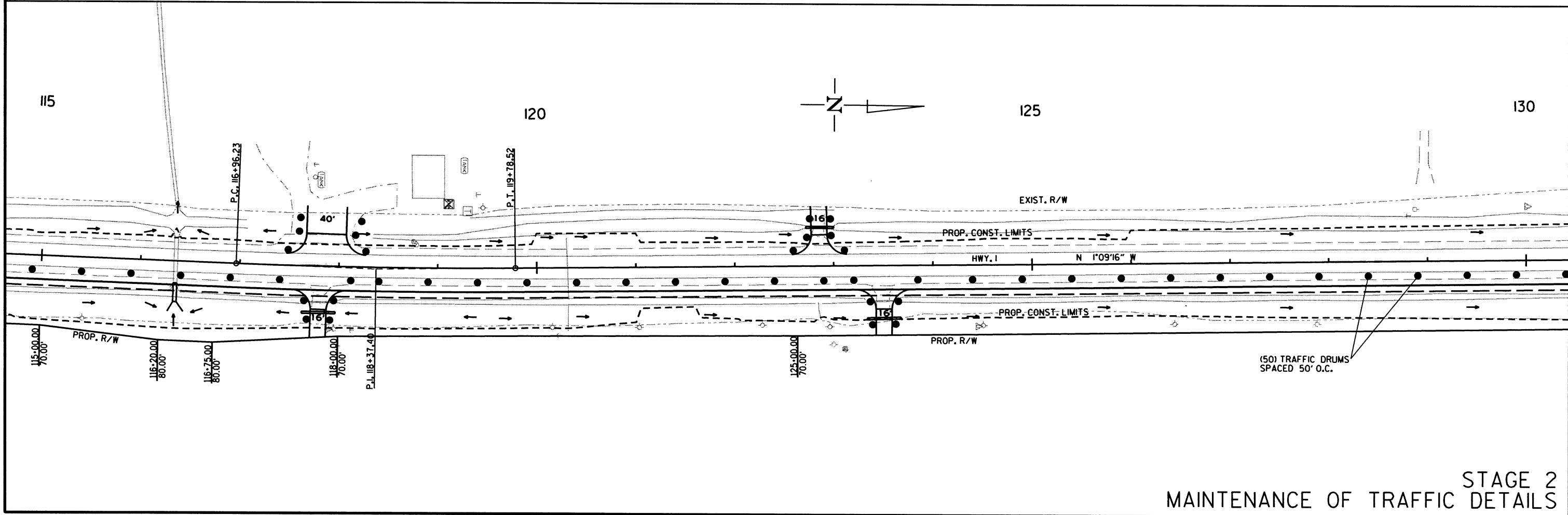
② MAINTENANCE OF TRAFFIC DETAILS



SEQUENCE OF CONSTRUCTION

STAGE 1:
 MAINTAIN TRAFFIC ON EXISTING ROADWAY.
 CONSTRUCT RT. SIDE OF PROPOSED HWY. 1.
 CONSTRUCT AND EXTEND BOX CULVERTS AND PIPE CULVERTS RT.

STAGE 2:
 MAINTAIN TRAFFIC ON EXISTING ROADWAY.
 EXTEND BOX CULVERT ON LT.
 PLACE FINAL SURFACE COURSE.
 PLACE PERMANENT PAVEMENT MARKINGS.

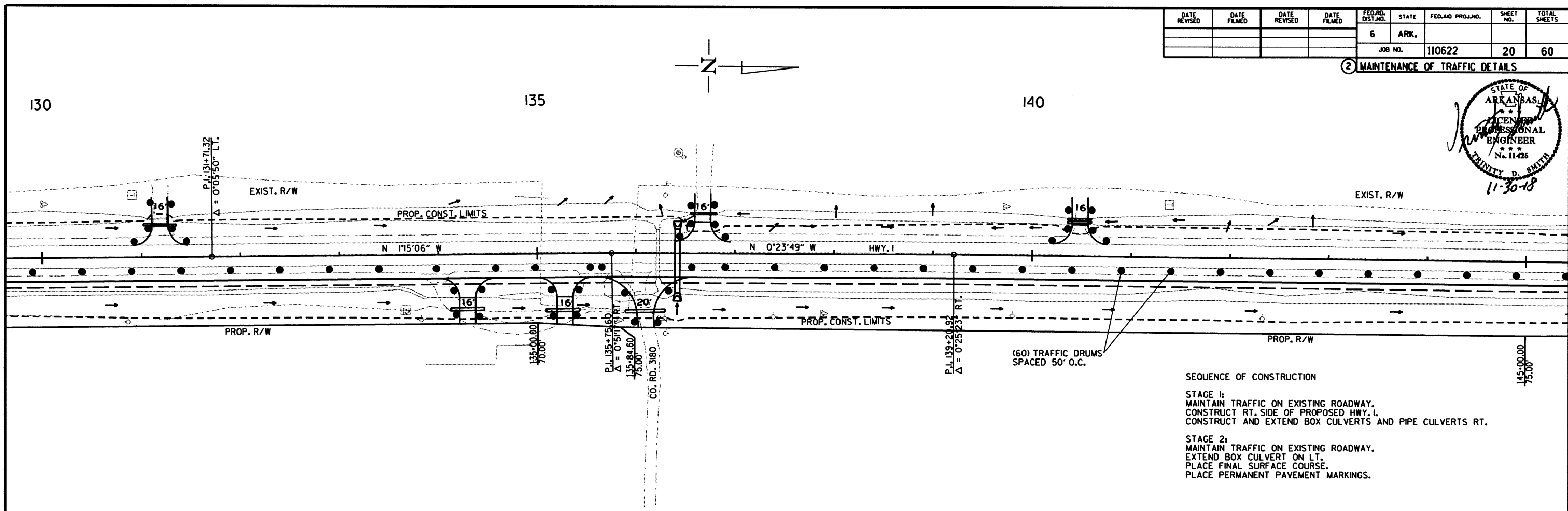


STAGE 2
 MAINTENANCE OF TRAFFIC DETAILS

11/2/2018
 R110622.DGN

DATE REVISED	DATE FILMED	DATE REVISED	DATE FILMED	FED. RD. DIST. NO.	STATE	FED. AID PROJ. NO.	SHEET NO.	TOTAL SHEETS
				6	ARK.		20	60
				JOB NO. 110622				

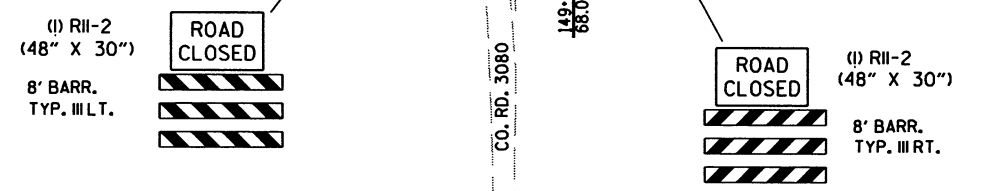
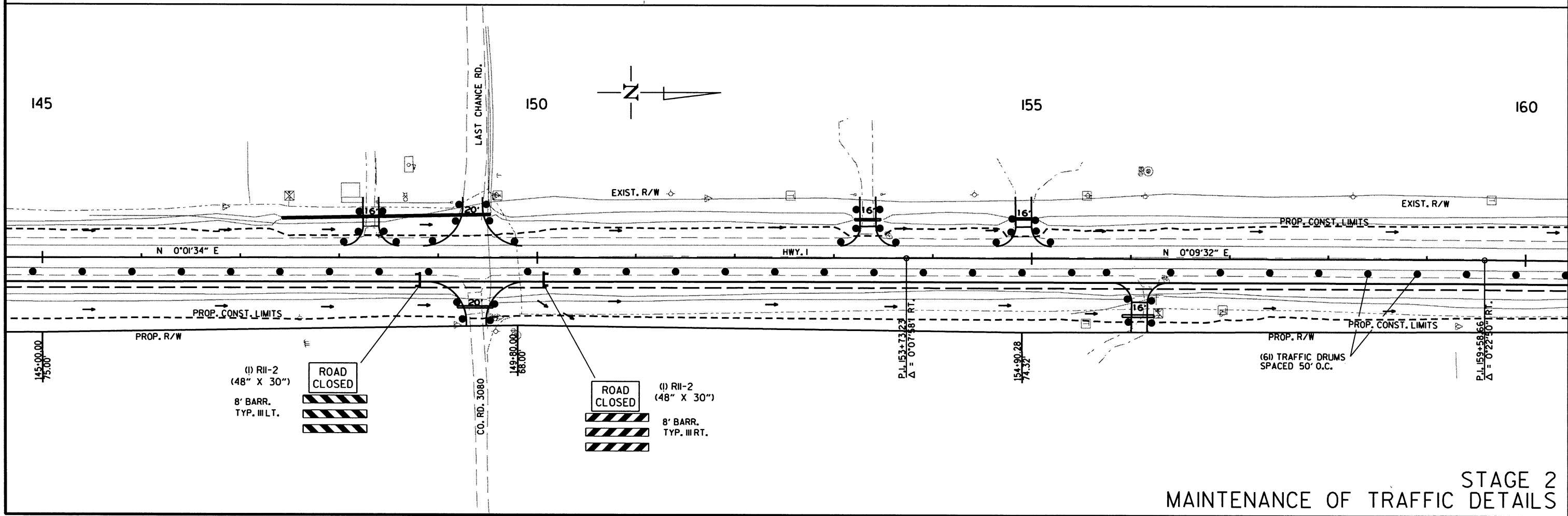
2 MAINTENANCE OF TRAFFIC DETAILS



SEQUENCE OF CONSTRUCTION

STAGE 1:
 MAINTAIN TRAFFIC ON EXISTING ROADWAY.
 CONSTRUCT RT. SIDE OF PROPOSED HWY. 1.
 CONSTRUCT AND EXTEND BOX CULVERTS AND PIPE CULVERTS RT.

STAGE 2:
 MAINTAIN TRAFFIC ON EXISTING ROADWAY.
 EXTEND BOX CULVERT ON LT.
 PLACE FINAL SURFACE COURSE.
 PLACE PERMANENT PAVEMENT MARKINGS.

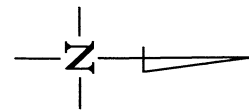
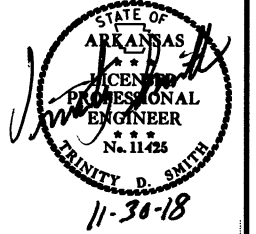


STAGE 2
 MAINTENANCE OF TRAFFIC DETAILS

11/2/2018
 R110622.DGN

DATE REVISED	DATE FILMED	DATE REVISED	DATE FILMED	FED. RD. DIST. NO.	STATE	FED. AID PROJ. NO.	SHEET NO.	TOTAL SHEETS
				6	ARK.			
				JOB NO.	110622		21	60

② MAINTENANCE OF TRAFFIC DETAILS

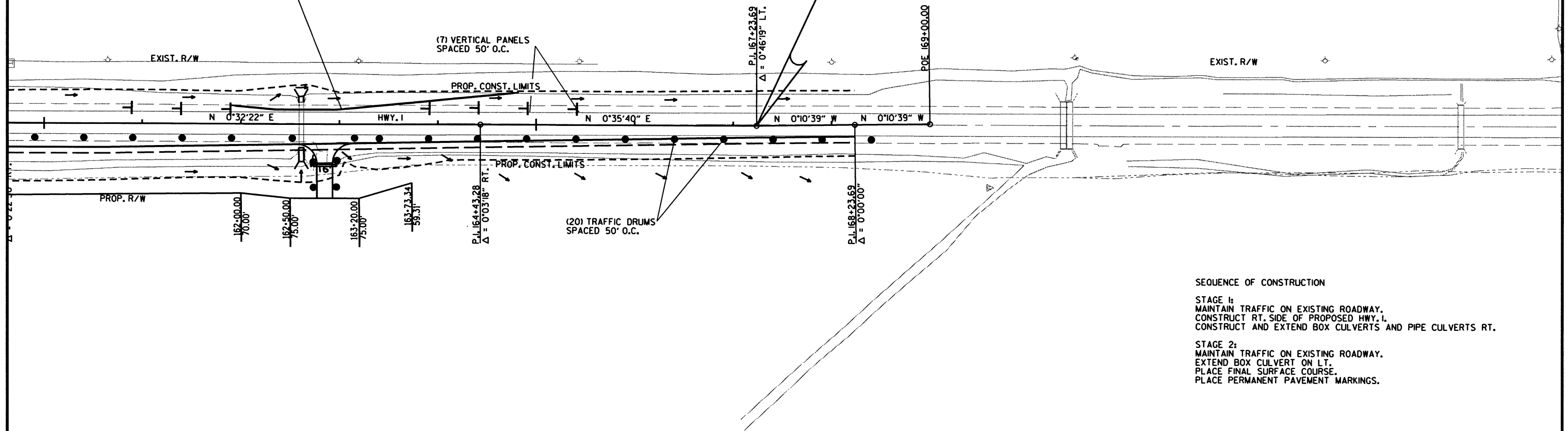


160

RELOCATE 280' P.C.C.B. & (2) SPECIAL END UNITS

165

STA. 167+23.69
END JOB 110622



SEQUENCE OF CONSTRUCTION

- STAGE 1:
 MAINTAIN TRAFFIC ON EXISTING ROADWAY.
 CONSTRUCT RT. SIDE OF PROPOSED HWY. 1.
 CONSTRUCT AND EXTEND BOX CULVERTS AND PIPE CULVERTS RT.
- STAGE 2:
 MAINTAIN TRAFFIC ON EXISTING ROADWAY.
 EXTEND BOX CULVERT ON LT.
 PLACE FINAL SURFACE COURSE.
 PLACE PERMANENT PAVEMENT MARKINGS.

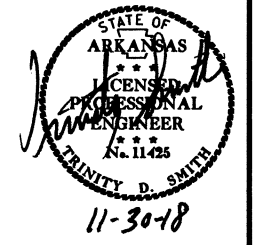
11/2/2018

R110622.DGN

STAGE 2
 MAINTENANCE OF TRAFFIC DETAILS

DATE REVISED	DATE FILMED	DATE REVISED	DATE FILMED	FED. RD. DIST. NO.	STATE	FED. AID PROJ. NO.	SHEET NO.	TOTAL SHEETS
				6	ARK.			
				JOB NO.	110622		22	60

2 PERMANENT PAVEMENT MARKING DETAILS

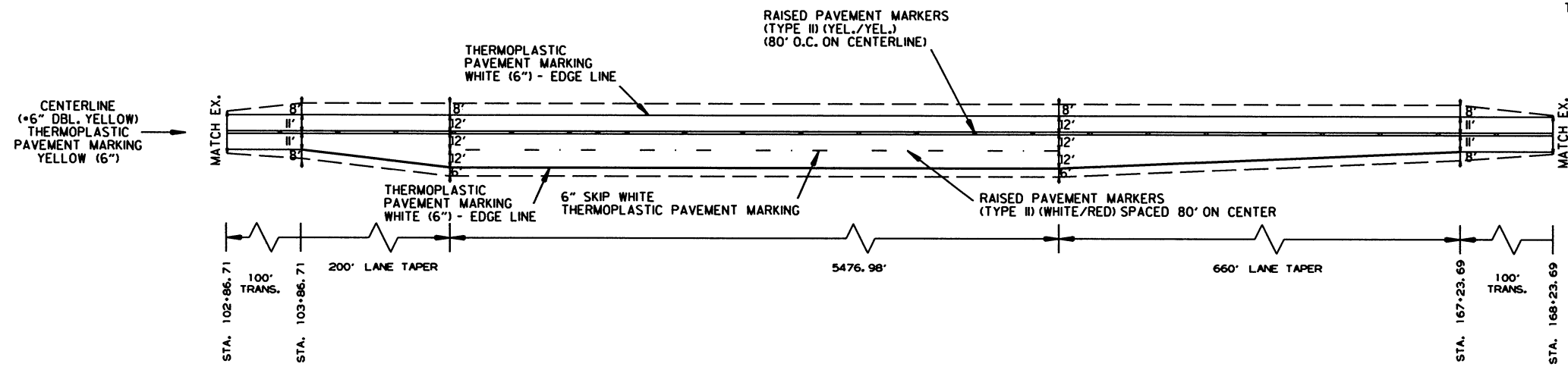


HWY. 1
PERMANENT PAVEMENT MARKINGS:

THERMOPLASTIC PAVEMENT MARKING:
RT. AND LT. EDGE LINES = 13074 LIN. FT. WHITE
DBL. CENTERLINE = 13074 LIN. FT. YELLOW
SKIP LINE = 1369 LIN. FT. WHITE

RAISED PAVEMENT MARKERS:
TYPE II (YEL./YEL.) 80' O.C. = 82 EACH
TYPE II (WHITE/RED) 80' O.C. = 68 EACH

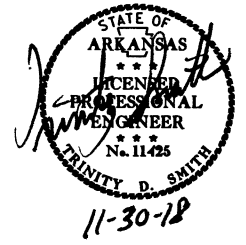
•THE 6" YELLOW STRIPING QUANTITY HAS BEEN ESTIMATED BASED ON A DOUBLE YELLOW CENTERLINE STRIPE FOR THE ENTIRE PROJECT. THE PROJECT MUST BE MARKED FOR PASSING/NO PASSING ZONES PRIOR TO THE PLACEMENT OF ANY FINAL STRIPING. CONTACT THE MAINTENANCE DIVISION AFTER THE FINAL LIFT OF SURFACE COURSE HAS BEEN PLACED TO SCHEDULE THE ZONING OF THE PROJECT.



HWY. 1- PERMANENT PAVEMENT MARKING DETAILS

DATE REVISED	DATE FILMED	DATE REVISED	DATE FILMED	FED. DIST. NO.	STATE	FED. AID PROJ. NO.	SHEET NO.	TOTAL SHEETS
				6	ARK.			
				JOB NO.	110622		23	60

② QUANTITIES



ADVANCE WARNING SIGNS AND DEVICES

SIGN NUMBER	DESCRIPTION	SIGN SIZE	STAGE 1	STAGE 2	MAXIMUM NUMBER REQUIRED	TOTAL SIGNS REQUIRED		VERTICAL PANELS	TRAFFIC DRUMS	BARRICADES (TYPE III)		FURNISHING & INSTALLING PRECAST CONC. BARRIER	RELOCATING PRECAST CONCRETE BARRIER	
						NO.	SQ. FT.			EACH	RIGHT			LEFT
W20-1	ROAD WORK 1500 FT.	48"x48"	2	2	2	2	32.0							
W20-1	ROAD WORK 1000 FT.	48"x48"	2	2	2	2	32.0							
W20-1	ROAD WORK 500 FT.	48"x48"	2	2	2	2	32.0							
W20-1	ROAD WORK AHEAD	48"x48"	5	5	5	5	80.0							
G20-2	END ROAD WORK	48"x24"	5	5	5	5	40.0							
R4-1	DO NOT PASS	24"x30"	2	2	2	2	10.0							
W21-5A	RIGHT SHOULDER CLOSED	36"x36"	2	2	2	2	18.0							
	VERTICAL PANELS		117	7	117			117						
	TRAFFIC DRUMS		54	221	221				221					
	TYPE III BARRICADE-RT. (8')		2		2					16				
	TYPE III BARRICADE-LT. (8')		2		2						16			
	FURNISHING AND INSTALLING PRECAST CONCRETE BARRIER		840		840						840			
	RELOCATING PRECAST CONCRETE BARRIER			280	280							280		
TOTALS:							244.0	117	221	16	16	840	280	

NOTE: THIS IS A HIGH TRAFFIC VOLUME ROAD AS DEFINED IN SECTION 604.03, STANDARD SPECIFICATIONS FOR HIGHWAY CONSTRUCTION.

THE QUANTITY OF VERTICAL PANELS PROVIDED IN THE CONTRACT IS FOR ONE SIDE OF THE ROADWAY FOR THE FULL LENGTH OF THE JOB. THIS IS THE MAXIMUM QUANTITY REQUIRED TO ALLOW THE CONTRACTOR TO NOTCH ONE MILE, BACKFILL TO A POINT WHERE THE VERTICAL DIFFERENTIAL IS 4" OR LESS, AND THEN NOTCH ANOTHER ONE-MILE SECTION. THIS IS THE MAXIMUM NUMBER OF VERTICAL PANELS THAT WILL BE PAID FOR. REFER TO SECTION 603.02 OF THE STANDARD SPECIFICATIONS FOR CONSTRUCTION REQUIREMENTS.

CONSTRUCTION PAVEMENT MARKINGS AND PERMANENT PAVEMENT MARKINGS

DESCRIPTION	STAGE 2	END OF JOB	CONSTRUCTION PAVEMENT MARKINGS	RAISED PAVEMENT MARKERS		THERMOPLASTIC PAVEMENT MARKING	
				TYPE II (WHITE/RED)	TYPE II (YEL/YEL)	6"	
						WHITE	YELLOW
LIN. FT. - EACH			LIN. FT.	EACH		LIN. FT.	
CONSTRUCTION PAVEMENT MARKINGS	27517		27517				
RAISED PAVEMENT MARKERS TYPE II (WHITE/RED)		68		68			
RAISED PAVEMENT MARKERS TYPE II (YEL/YEL)		82			82		
THERMOPLASTIC PAVEMENT MARKING WHITE (6")		14443				14443	
THERMOPLASTIC PAVEMENT MARKING YELLOW (6")		13074					13074
TOTALS:			27517	68	82	14443	13074

NOTE: THIS IS A HIGH TRAFFIC VOLUME ROAD AS DEFINED IN SECTION 604.03, STANDARD SPECIFICATIONS FOR HIGHWAY CONSTRUCTION.

NOTE: THE 6" YELLOW STRIPING QUANTITY HAS BEEN ESTIMATED BASED ON A DOUBLE YELLOW CENTERLINE STRIPE FOR THE ENTIRE PROJECT. THE PROJECT MUST BE MARKED FOR PASSING/NO PASSING ZONES PRIOR TO THE PLACEMENT OF ANY FINAL STRIPING. CONTACT THE MAINTENANCE DIVISION AFTER THE FINAL LIFT OF SURFACE COURSE HAS BEEN PLACED TO SCHEDULE THE ZONING OF THE PROJECT.

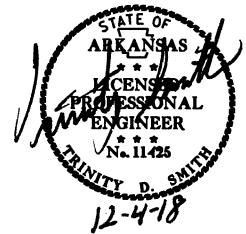
11/2/2018

R110622.DGN

QUANTITIES

DATE REVISED	DATE FILMED	DATE REVISED	DATE FILMED	FED. DIST. NO.	STATE	FED. AID PROJ. NO.	SHEET NO.	TOTAL SHEETS
				6	ARK.			
				JOB NO.	110622		24	60

② QUANTITIES



REMOVAL AND DISPOSAL OF ITEMS

STATION	STATION	LOCATION	REMOVAL AND DISPOSAL OF WATER WELL	REMOVAL AND DISPOSAL OF DROP INLETS
			EACH	EACH
157+00	157+00	HWY. 1 - RT.	1	
120+30	120+30	HWY. 1 - RT.		1
TOTAL:			1	1

CLEARING AND GRUBBING

STATION	STATION	LOCATION	CLEARING	GRUBBING
			STATION	STATION
103+86	167+24	HWY. 1 - RT.	64	64
120+00	121+00	HWY. 1 - LT.	1	1
126+00	136+42	HWY. 1 - LT.	11	11
162+00	163+00	HWY. 1 - LT.	1	1
TOTALS:			77	77

REMOVAL AND DISPOSAL OF FENCE

STATION	STATION	LOCATION	FENCE
			LIN. FT.
155+00	155+20	HWY. 1 - RT.	20
TOTAL:			20

EARTHWORK

STATION	STATION	LOCATION / DESCRIPTION	UNCLASSIFIED EXCAVATION	COMPACTED EMBANKMENT	* SOIL STABILIZATION
			CU. YD.	CU. YD.	TON
ENTIRE PROJECT		STAGE 1-MAIN LANES	7656	5034	
ENTIRE PROJECT		STAGE 2-MAIN LANES	270	548	
ENTIRE PROJECT		APPROACHES		845	
ENTIRE PROJECT		TEMPORARY APPROACHES	100		
ENTIRE PROJECT		TO BE USED IF AND WHERE DIRECTED BY THE ENGINEER			100
TOTALS:			8026	6427	100

* QUANTITY ESTIMATED.
SEE SECTION 104.03 OF THE STD. SPECS.

NOTE: EARTHWORK QUANTITIES SHOWN ABOVE SHALL BE PAID AS PLAN QUANTITY.

REMOVAL AND DISPOSAL OF CULVERTS

STATION	DESCRIPTION	PIPE CULVERTS
		EACH
117+80	HWY. 1 - RT.	1
120+30	HWY. 1	1
120+30	HWY. 1 - RT.	1
122+85	HWY. 1 - LT.	1
123+50	HWY. 1 - RT.	1
131+20	HWY. 1 - LT.	1
134+10	HWY. 1 - RT.	1
135+35	HWY. 1 - RT.	1
136+00	HWY. 1 - RT.	1
136+70	HWY. 1 - LT.	1
140+50	HWY. 1 - LT.	2
148+30	HWY. 1 - LT.	1
149+35	HWY. 1 - RT.	1
153+35	HWY. 1 - LT.	1
156+20	HWY. 1 - RT.	1
162+80	HWY. 1 - RT.	1
154+90	HWY. 1 - LT.	1
TOTAL:		18

NOTE: QUANTITIES SHOWN ABOVE SHALL INCLUDE REMOVAL & DISPOSAL OF ALL HEADWALLS AND FLARED END SECTIONS IF APPLICABLE.

COLD MILLING ASPHALT PAVEMENT

STATION	STATION	LOCATION	AVG. WIDTH	COLD MILLING ASPHALT PAVEMENT
			FEET	SQ. YD.
102+86.71	103+86.71	MAIN LANES	22.00	244.44
167+23.69	168+23.69	MAIN LANES	22.00	244.44
TOTAL:				488.88

NOTE: AVERAGE MILLING DEPTH 1".

BENCH MARKS

STATION	LOCATION	BENCH MARKS
		EACH
109+80	HWY. 1 - LT.	1
116+35	HWY. 1 - RT.	1
162+61	HWY. 1 - LT.	1
TOTAL:		3

NOTE: SHOWN FOR INFORMATION ONLY. BENCH MARKS SHALL BE FURNISHED AND PLACED BY STATE FORCES.

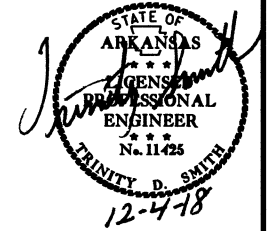
MAILBOXES

LOCATION	MAILBOXES	MAILBOX SUPPORTS (SINGLE)
		EACH
ENTIRE PROJECT	5	5
TOTALS:		5

QUANTITIES

DATE REVISED	DATE FILMED	DATE REVISED	DATE FILMED	FED. DIST. NO.	STATE	FED. AID PROJ. NO.	SHEET NO.	TOTAL SHEETS
				6	ARK.			
				JOB NO.	110622		25	60

② QUANTITIES



SOIL LOG

STATION	LOCATION	DEPTH	LIQUID LIMIT	PLASTICITY INDEX	AASHTO CLASSIFICATION	COLOR
		FEET				
105+00	RT.	0-5	27	10	A-4(4)	BROWN
105+00	RT.	0-5	29	11	A-6(8)	GRAY
105+00	RT.	0-5	26	7	A-4(3)	BROWN
113+00	LT.	0-5	25	7	A-4(4)	BROWN
113+00	LT.	0-5	25	9	A-4(3)	BROWN
113+00	LT.	0-5	27	8	A-4(3)	BROWN
113+00	LT.	0-5	34	16	A-6(13)	BROWN
121+00	RT.	0-5	27	6	A-4(5)	BROWN
121+00	RT.	0-5	23	3	A-4(1)	BR/GR
121+00	RT.	0-5	29	8	A-4(7)	BR/GR
129+00	LT.	0-5	25	6	A-4(4)	GRAY
129+00	LT.	0-5	25	6	A-4(3)	GRAY
129+00	LT.	0-5	22	5	A-4(2)	GRAY
137+00	RT.	0-5	26	5	A-4(2)	BROWN
137+00	RT.	0-5	25	6	A-4(2)	BROWN
137+00	RT.	0-5	23	5	A-4(2)	BROWN
145+00	LT.	0-5	24	5	A-4(2)	GRAY
145+00	LT.	0-5	24	5	A-4(1)	GRAY
145+00	LT.	0-5	ND	NP	A-4(0)	BROWN
153+00	RT.	0-5	24	7	A-4(2)	BR/GR

SOIL CHARACTERISTICS TABULATED ABOVE ARE REPRESENTATIVE AT THE LOCATION OF THE SAMPLE, AND FROM SURFACE INDICATIONS ARE TYPICAL FOR THE LIMITS SHOWN. THESE DATA ARE SHOWN FOR INFORMATION ONLY. THE STATE WILL NOT BE RESPONSIBLE FOR VARIATIONS IN THE SOIL CHARACTERISTICS AND/OR EXTENT OF SAME DIFFERING FROM THE ABOVE TABULATIONS.
 NP - NON-PLASTIC
 ND - NOT DETERMINABLE

EROSION CONTROL MATTING

STATION	STATION	LOCATION	LENGTH	CLASS 3
			LIN. FT.	SQ. YD.
109+00.00	109+69.00	HWY. 1 - RT.	69.00	61.33
162+00.00	162+55.00	HWY. 1 - LT. & RT.	55.00	48.89
162+68.00	163+00.00	HWY. 1 - LT. & RT.	32.00	28.44
TOTAL:				138.66

NOTE: AVERAGE WIDTH = 8'-0"

4" PIPE UNDERDRAIN

STATION	STATION	LOCATIONS	4" PIPE UNDERDRAINS	UNDERDRAIN OUTLET PROTECTORS
			LIN. FT.	EACH
* ENTIRE PROJECT TO BE USED IF AND WHERE DIRECTED BY THE ENGINEER			3000	30
TOTALS:			3000	30

* NOTE: QUANTITY ESTIMATED.
 SEE SECTION 104.03 OF THE STD. SPECS.

EROSION CONTROL

STATION	STATION	LOCATION	PERMANENT EROSION CONTROL					TEMPORARY EROSION CONTROL					
			SEEDING	LIME	MULCH COVER	WATER	SECOND SEEDING APPLICATION	TEMPORARY SEEDING	MULCH COVER	WATER	SAND BAG DITCH CHECKS	SILT FENCE	*SEDIMENT REMOVAL & DISPOSAL
			ACRE	TON	ACRE	M.GAL.	ACRE	ACRE	ACRE	M.GAL.	(E-5) BAG	(E-11) LIN. FT.	CU. YD.
ENTIRE PROJECT		CLEARING AND GRUBBING											
ENTIRE PROJECT		STAGE 1	4.15	8.30	4.15	423.3	4.15	4.15	4.15	84.7	308	150	20
ENTIRE PROJECT		STAGE 2	1.44	2.88	1.44	146.9	1.44	1.44	1.44	29.4	44	275	12
*ENTIRE PROJECT TO BE USED IF AND WHERE DIRECTED BY THE ENGINEER.			2.00	4.00	2.00	204.0	2.00	2.00	2.00	40.8	25	200	7
TOTALS:			7.59	15.18	7.59	774.2	7.59	19.99	19.99	407.9	949	2400	131

BASIS OF ESTIMATE:

LIME 2 TONS / ACRE OF SEEDING
 WATER 102.0 M.G. / ACRE OF SEEDING
 WATER 20.4 M.G. / ACRE OF TEMPORARY SEEDING
 SAND BAG DITCH CHECKS 22 BAGS / LOCATION

NOTE: THE TEMPORARY EROSION CONTROL DEVICES SHOWN ABOVE AND ON THE PLANS SHALL BE INSTALLED IN SUCH A SEQUENCE AS TO DETER EROSION AND SEDIMENTATION ON U.S. WATERWAYS AS EXPLAINED BY THE NATIONAL POLLUTANT DISCHARGE ELIMINATION SYSTEM PERMIT.

*QUANTITIES ESTIMATED.
 SEE SECTION 104.03 OF THE STD. SPECS.