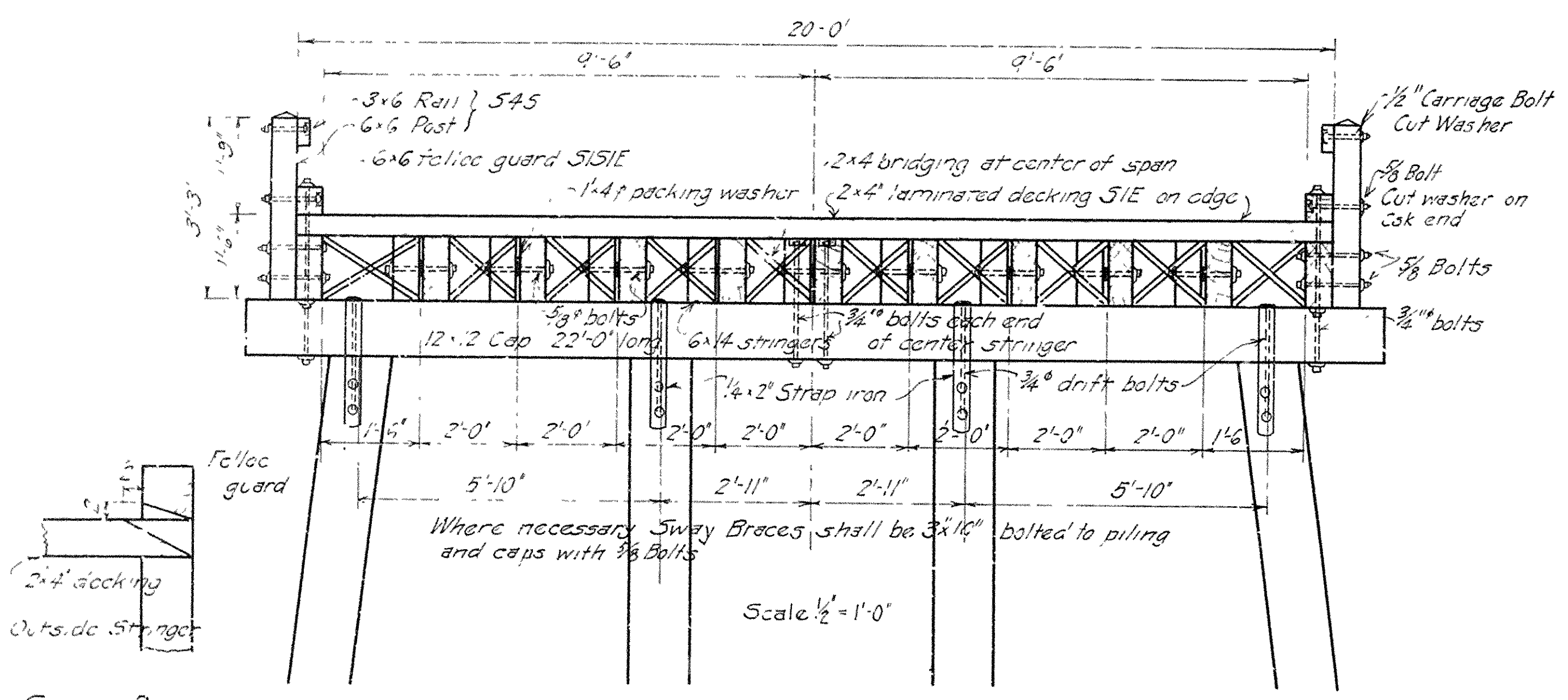
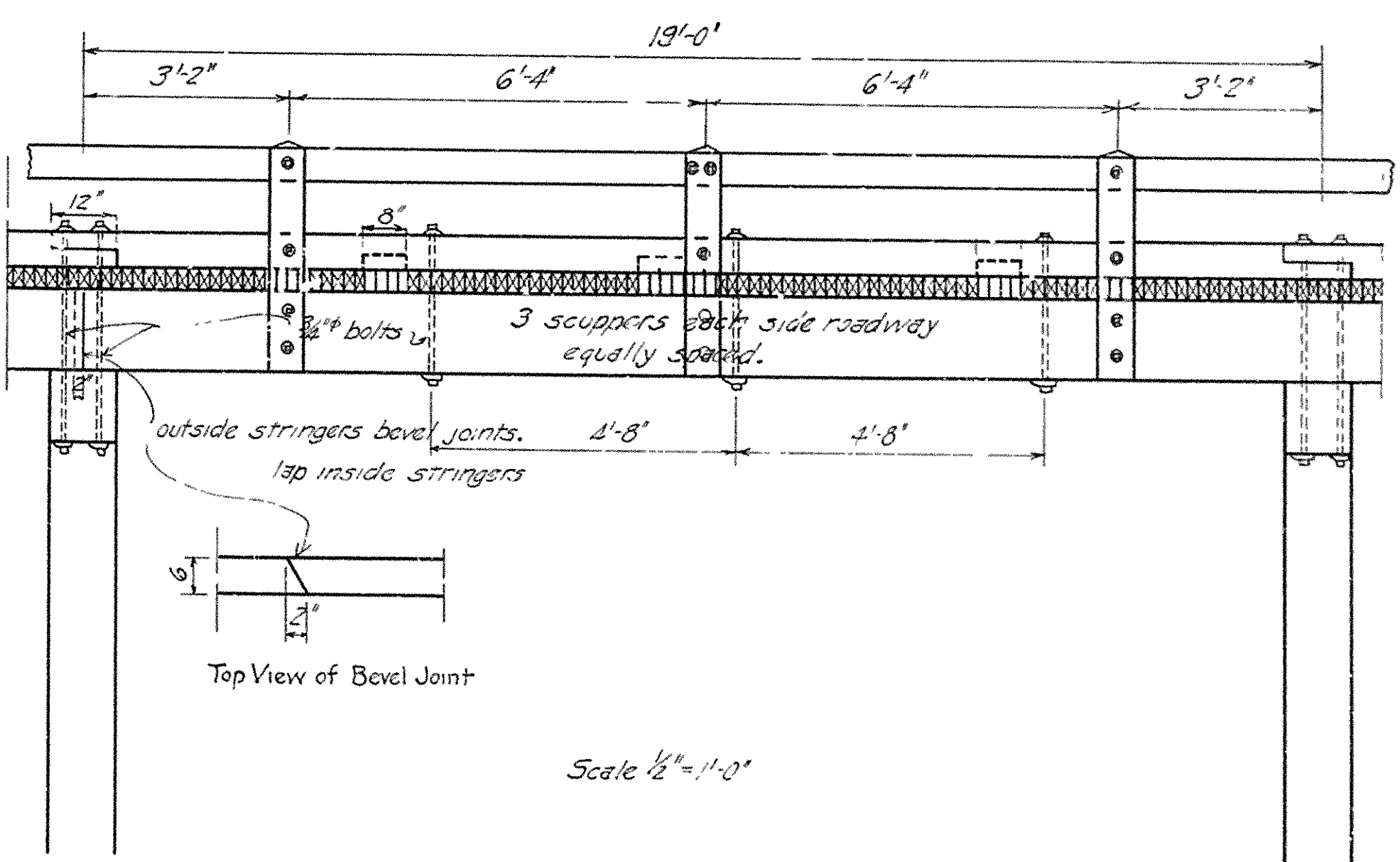


FISCAL YEAR		SHEET NO.	TOTAL SHEETS



CROSS SEC. ROADWAY



ELEVATION

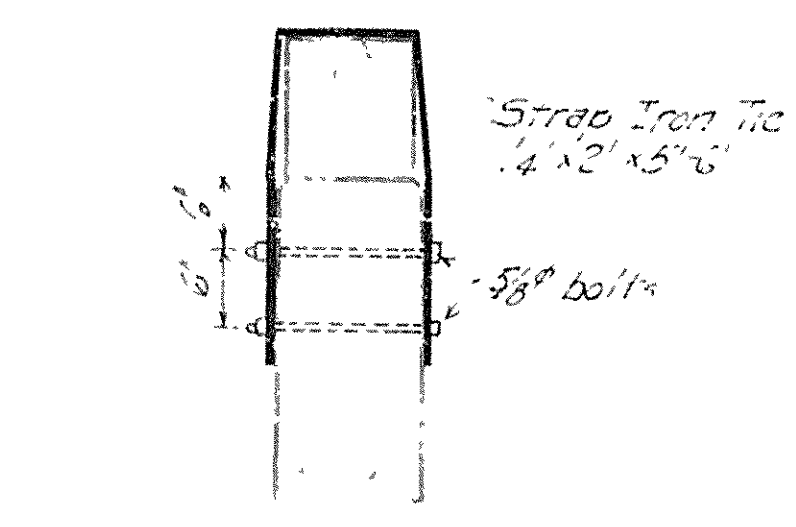
Handrail and Posts shall be made of untreated seasoned, dressed lumber, painted with three coats of paint as per paragraph 52.3 a) of Specifications. Each stringer to be spiked to caps with 4x4s so as end to be sized at bearing points in field. 2x4 laminated decking S1E. Each piece to be nailed to each adjacent piece once between each stringer with 30d spikes. Each piece to be nailed to alternate stringers with 20d spikes. Alternate pieces nailed to alternate stringers. Random length pieces 2x4 decking may be used under the following conditions:

1. Each joint to be made on stringers.
2. Each piece shall cover at least 3 stringers.
3. One joint only in any laming.
4. Each joint to be followed by at least 3'0" length near.

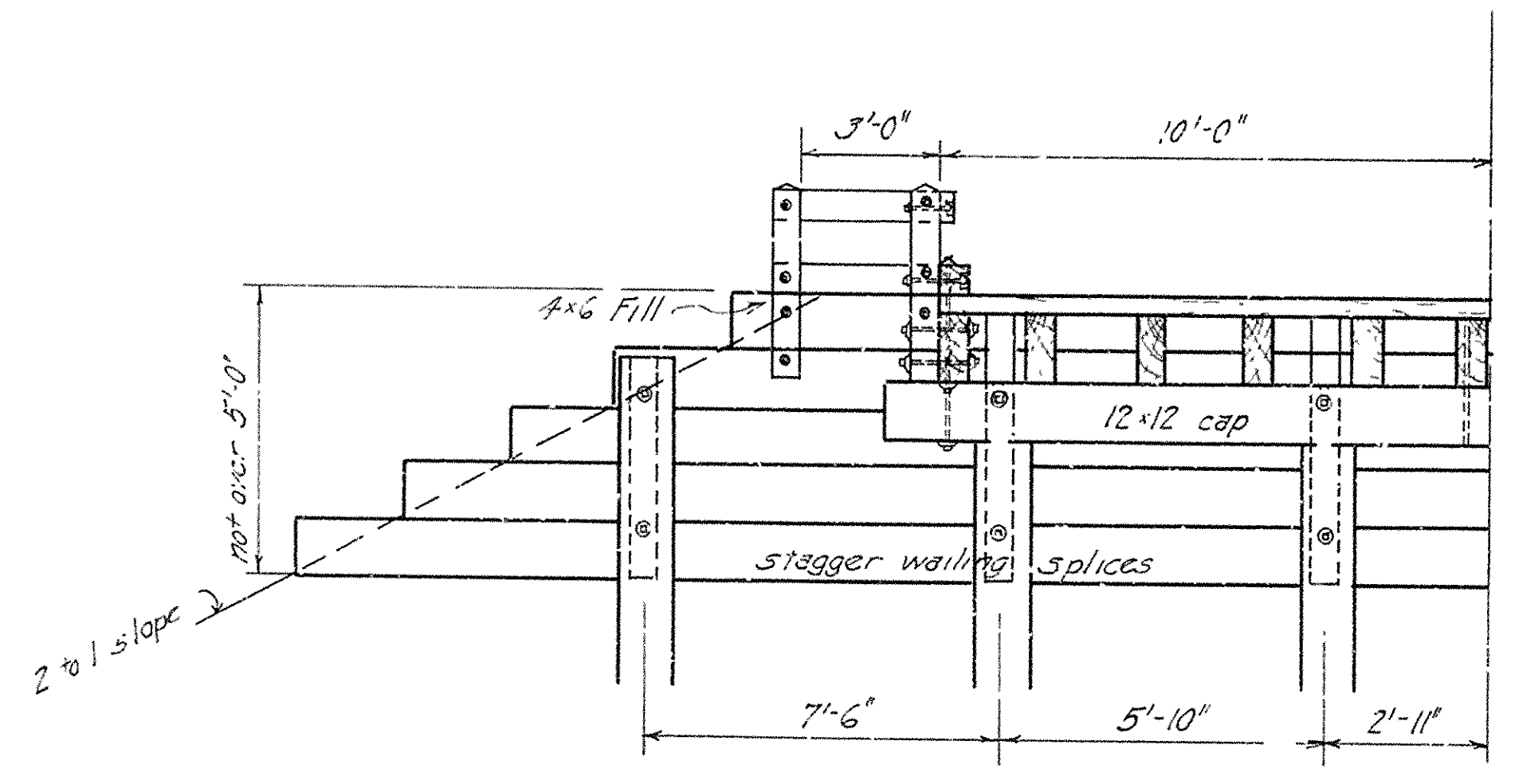
Use sway bracing on all bents 6'-0" or over in height. Use malleable or cast iron washers on both ends of machine bolts unless noted otherwise. All timber and piling to be treated, by empty cell process in accordance with paragraph 52.2 d) of Arkansas State Standard Specifications.

**SPECIFICATIONS**  
Arkansas State Road and Bridge Specifications adopted May 30, 1925

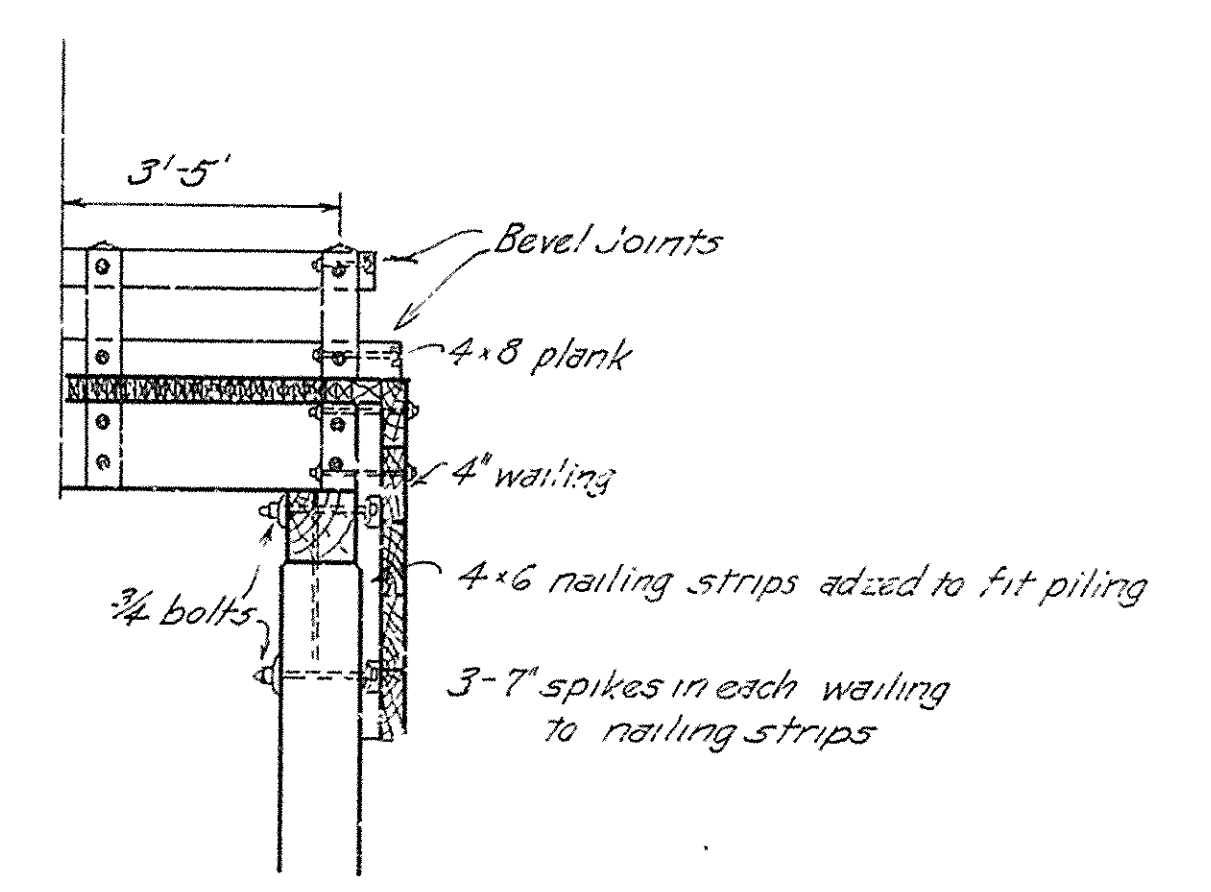
SCUPPER DETAIL



DETAIL PILING TIE



ABUTMENT DETAILS  
Scale 3/8" = 1'-0"



DETAILS OF STANDARD  
OVERFLOW TREATED TIMBER TRESTLE  
19'-0" SPAN 19'-0" ROADWAY  
ROUTE SEC.  
**ARKANSAS STATE HIGHWAY DEPARTMENT**  
LITTLE ROCK, ARK.  
Drawn By: \_\_\_\_\_ Date: \_\_\_\_\_  
Traced By: \_\_\_\_\_ Date: \_\_\_\_\_  
Checked By: \_\_\_\_\_ Date: \_\_\_\_\_  
BRIDGE NO. \_\_\_\_\_ Scale: in. ft.  
DRAWING NO. 12

M.B. Lamm  
BRIDGE ENGINEER