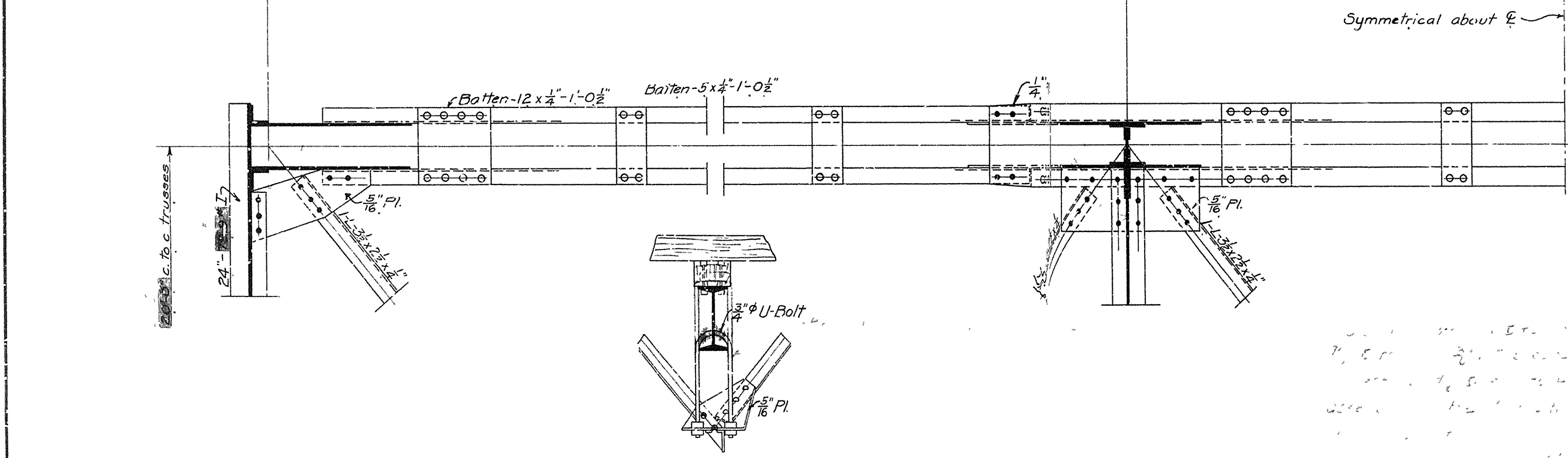
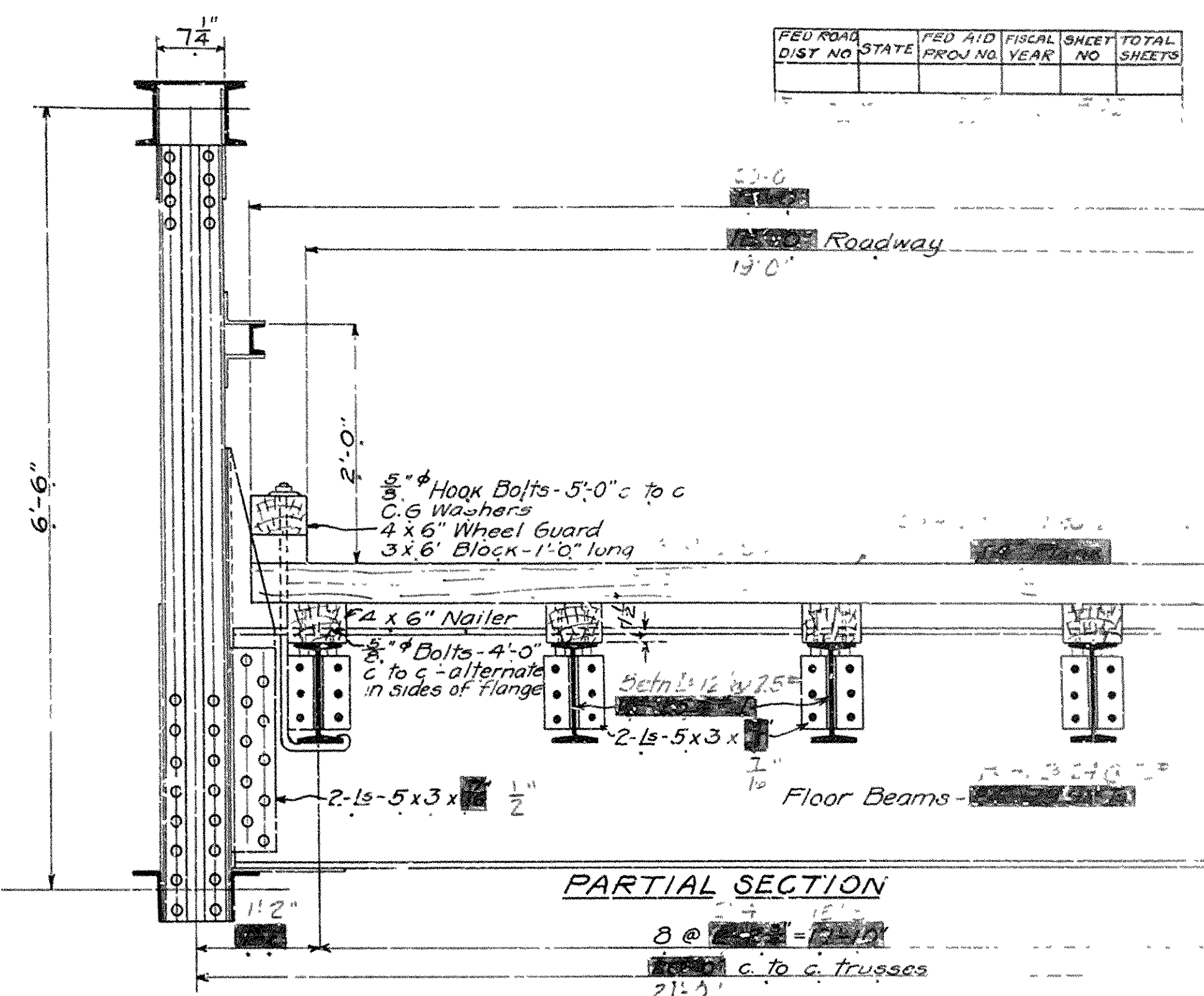
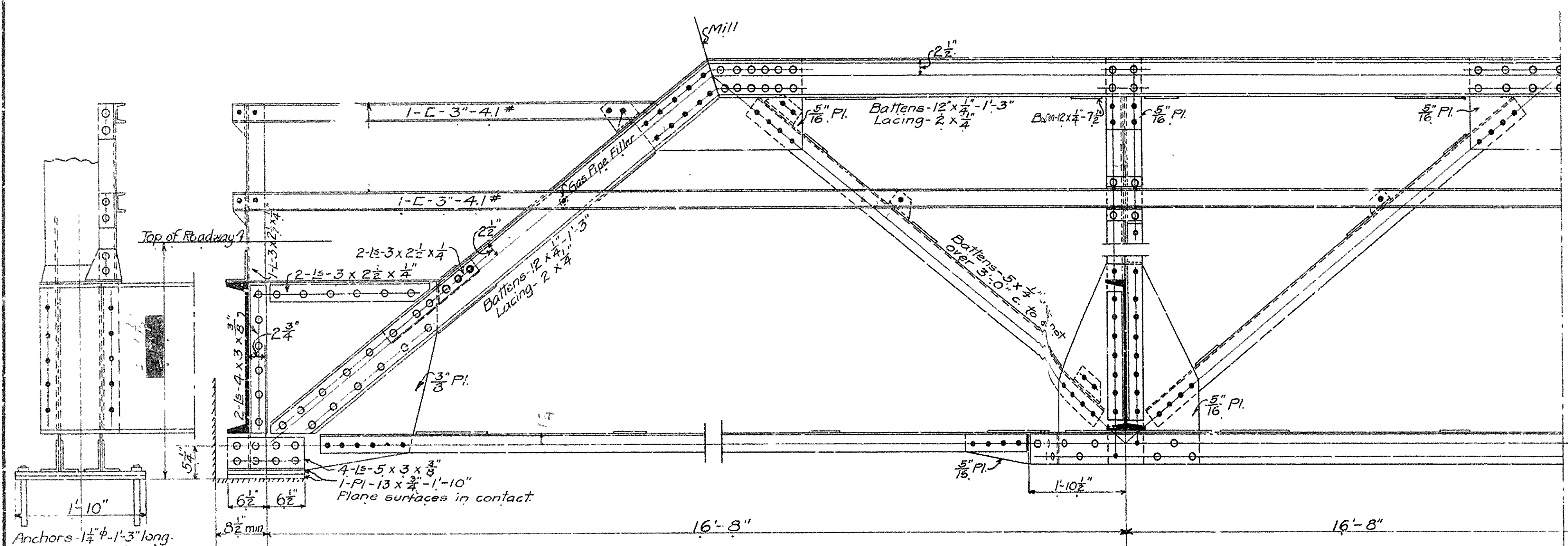


FED. ROAD DIST. NO.	STATE	FED. AID PROJ. NO.	FISCAL YEAR	SHEET NO.	TOTAL SHEETS

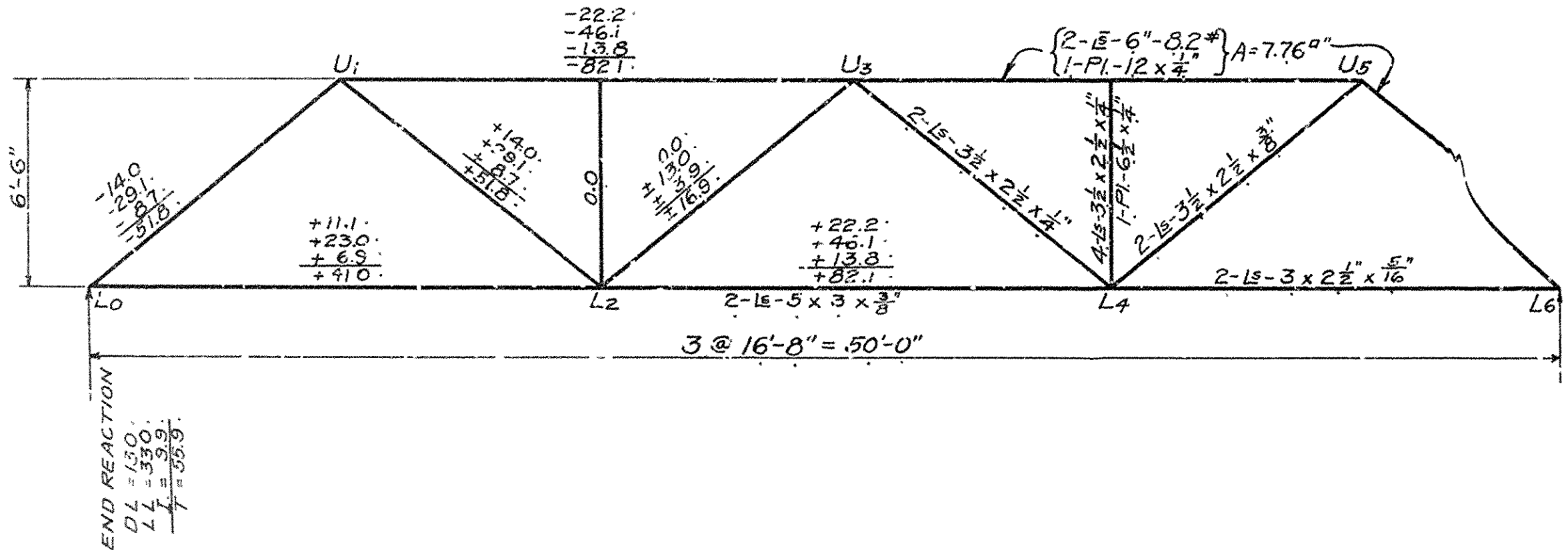


SPECIFICATIONS
 Live Load: - Uniform, - 80 lbs per square foot of roadway.
 Concentrated, - Two 15-Ton Trucks as shown below

Impact: - 30% of live load
 Unit Stresses - See Arkansas Highway Department Specifications
 Rivets: - 3/4" diam. except in flanges of channels
 Open Holes: - 1/8" diam.
 All field connections riveted. Rivet holes in tension members are to be so spaced that not more than one hole is deducted from area of cross-section of each angle at point of maximum stress.
 Shop Paint: - One coat red lead and boiled linseed oil.
 Field Paint: - Two coats of different colors as approved by the engineer.
 Batten plates spaced not over 3'-0" c to c.

STRINGERS	FLOOR BEAMS
D.L.M. = 3/8 x 74 x 16.67 = 2,565'#	D.L.M. = 3/8 x 63.8 x 20 = 31,900'#
L.L.M. = 7/8 x 5600 x 16.67 = 23,400	L.L.M. = 8 1/2 x 24,000 - 6 x 12,000 = 132,000
Impact 30% = 7,020	Impact 30% = 39,600
Total = 32,985'#	Total = 203,500'#
32,985 x 12 = 395,820 = Sec. Mod. Req'd.	203,500 x 12 = 2,442,000 = Sec. Mod. Req'd.
Use 12 x 12 x 1/2 - Sec. Mod. = 3,116	Use 24 x 24 x 1/2 - Sec. Mod. = 2,442,000
Estimated weight of steel = 32,985 x 49 = 1,617,863 lbs	Lumber = 5,276 M. = 112,000 lbs

NOTE: - This drawing is general only. Shop drawings must be made in compliance with specifications and must be submitted and approved before fabrication begins.



DESIGNED: N.B.G.
 TRACED: E.H.F.
 CHECKED: E.H.F.
 REVISIONS:

STANDARD PLAN
 50-FT. STEEL HIGHWAY BRIDGE.
 18' ROADWAY
 ARKANSAS HIGHWAY DEPARTMENT.
 LITTLE ROCK, ARK.
 Approved: Commissioner State Lands, Highways & Improvements
 By: State Highway Engineer
 August, 1922.
 STATE STANDARD NO. F405A