

Evaluation Concrete Deck Arch, Open Spandrel Bridges



EVALUATION BRIDGE #00279
RESERVE POOL
COUNTY ROAD 721
PIKE COUNTY
CONCRETE ARCH – DECK, OPEN SPAN
DATE OF CONSTRUCTION – 1928
BUILDER - LUTEN BRIDGE COMPANY

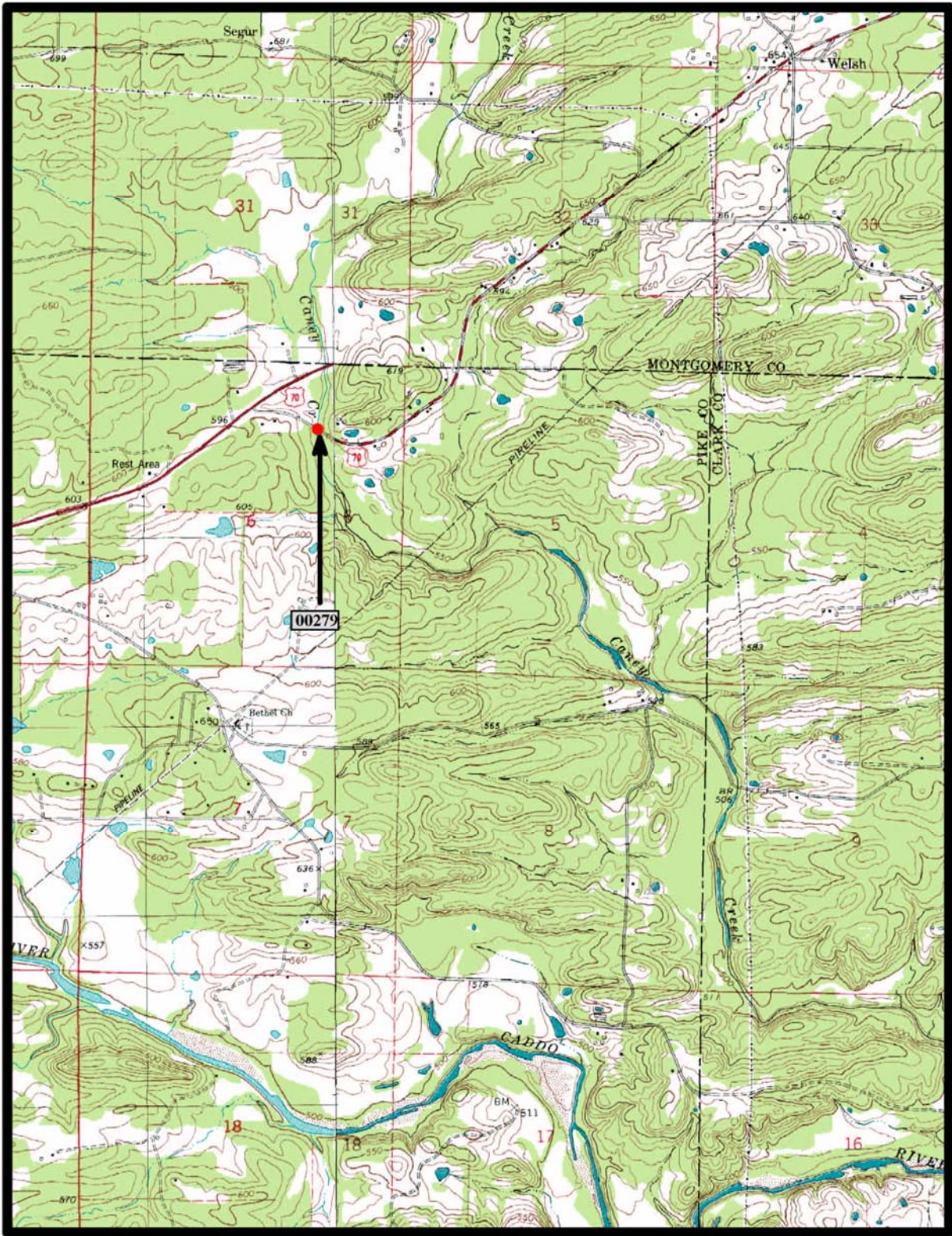


Evaluation Concrete_Arch_Bridges Properties

General Attributes

	Name	Value
▶	Bridge Number	00279
	Span_Type	Open
	Date_Built	1928
	County	Pike
	Road	CR 721
	Crosses	Chaney Creek
	Builder	Luten Bridge Company
	Number_of_Spans	1
	Span_Length	100
	Deck_Width	18
	Structure_Length	156
	Skewed	False
	Altered	False
	Unique	Luten Concrete Arch
	On_NR	False
	Demolished	False
	Photographed	True
	Original_Job	
	Replacement_Job	
	Plans	False
	In_GIS	True
	Attribute1	42
	Bridge_Number1	00279
	Pool_Reserve	Yes
	Evaluation	Yes
	Owner	County

Close



Glenwood, Amity 7.5 min. Quads

Notes



EVALUATION BRIDGE #001781

RESERVE POOL

STATE HIGHWAY 7

GARLAND COUNTY

CONCRETE ARCH – DECK, OPEN SPAN

DATE OF CONSTRUCTION – 1933

BUILDER - AULT - RICH CONSTRUCTION

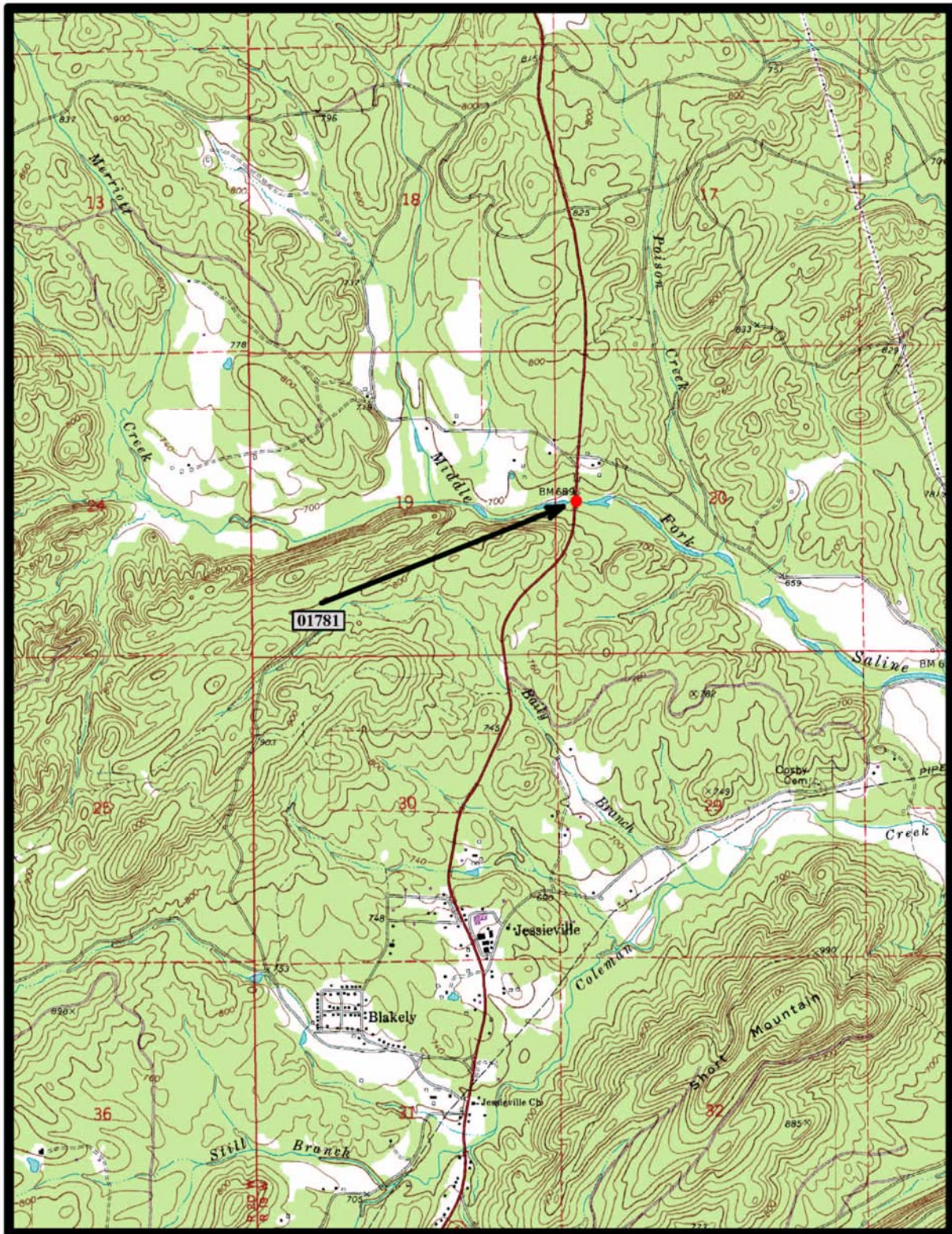


Evaluation Concrete_Arch_Bridges Properties

General Attributes

Name	Value
Bridge Number	01781
Span_Type	Open
Date_Built	1933
County	Garland
Road	SH 7
Crosses	Middle Fork of Saline River
Builder	Ault - Rich Construction
Number_of_Spans	2
Span_Length	70
Deck_Width	20
Structure_Length	145
Skewed	False
Altered	False
Unique	
On_NR	False
Demolished	False
Photographed	True
Original_Job	
Replacement_Job	
Plans	True
In_GIS	True
Attribute1	45
Bridge_Number1	01781
Pool_Reserve	Yes
Evaluation	Yes
Owner	State

Close

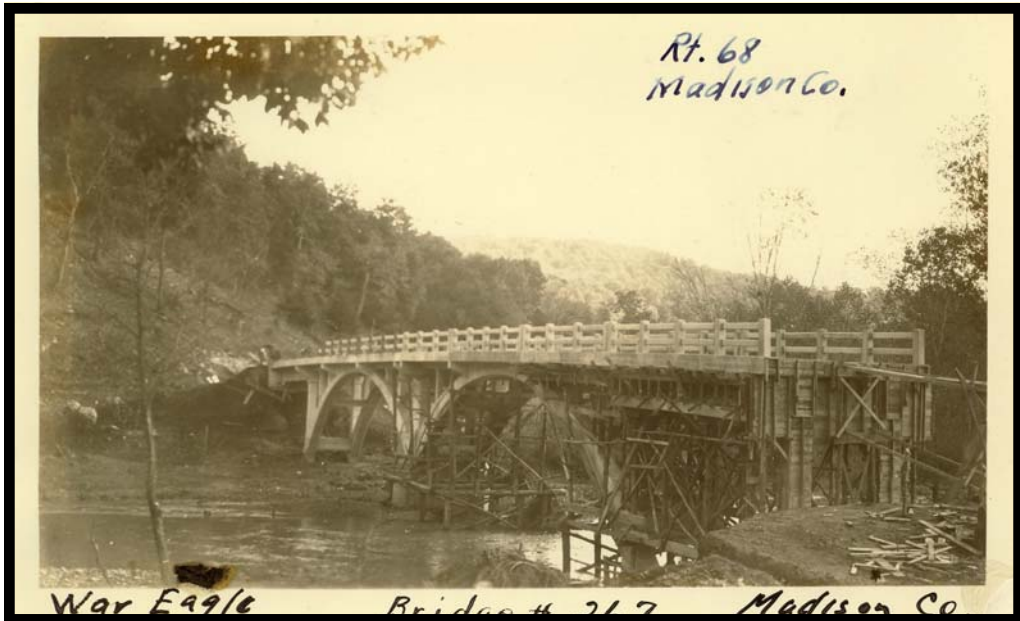


Jesseville 7.5 min. Quads

Notes



EVALUATION BRIDGE #15035
RESERVE POOL
COUNTY ROAD 264
MADISON COUNTY
CONCRETE ARCH – DECK, OPEN SPAN
DATE OF CONSTRUCTION – 1924
BUILDER - MEYER & GREENWALD CONST. CO.



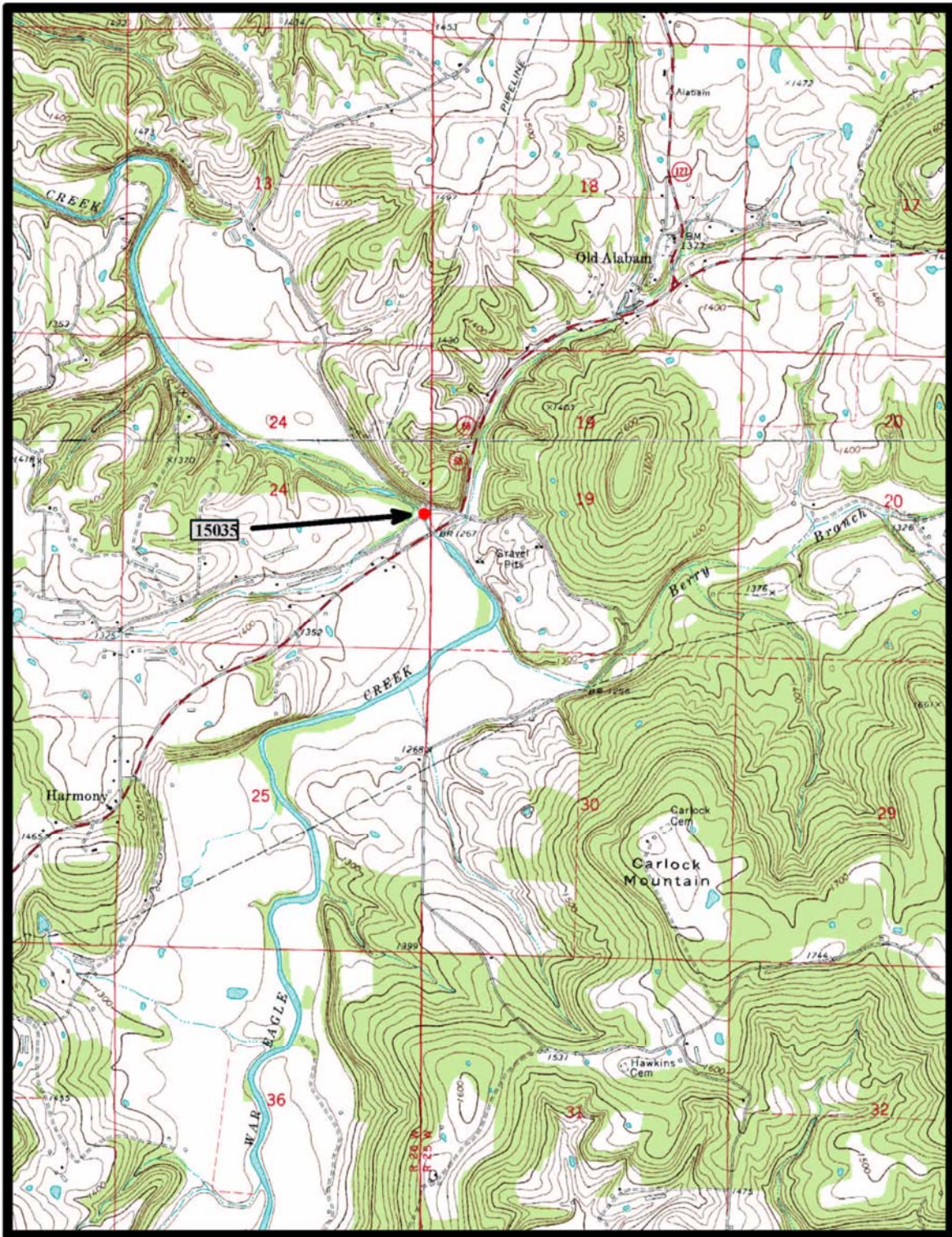
Courtesy of John R. Hume V Collection - Torreyson Library

Join of Concrete_Arch_Bridges and Concrete_Arch_Bridge... X

General Attributes

Name	Value
Bridge Number	15035
Span_Type	Open
Date_Built	1924
County	Madison
Road	CR 264
Crosses	War Eagle Creek
Builder	Meyer & Greenwald Const. Company
Number_of_Spans	2
Span_Length	71
Deck_Width	
Structure_Length	200
Skewed	False
Altered	False
Unique	
On_NR	False
Demolished	False
Photographed	True
Original_Job	
Replacement_Job	
Plans	False
In_GIS	True
Attribute1	11
Bridge_Number1	15035
Pool_Reserve	Yes
Evaluation	Yes
Owner	County

Close



Forum, Huntsville 7.5 min. Quads

Notes



EVALUATION BRIDGE #M1275
STATE HIGHWAY 69
INDEPENDENCE COUNTY
CONCRETE ARCH – DECK, OPEN SPAN
DATE OF CONSTRUCTION – 1930
BUILDER - LUTEN BRIDGE COMPANY

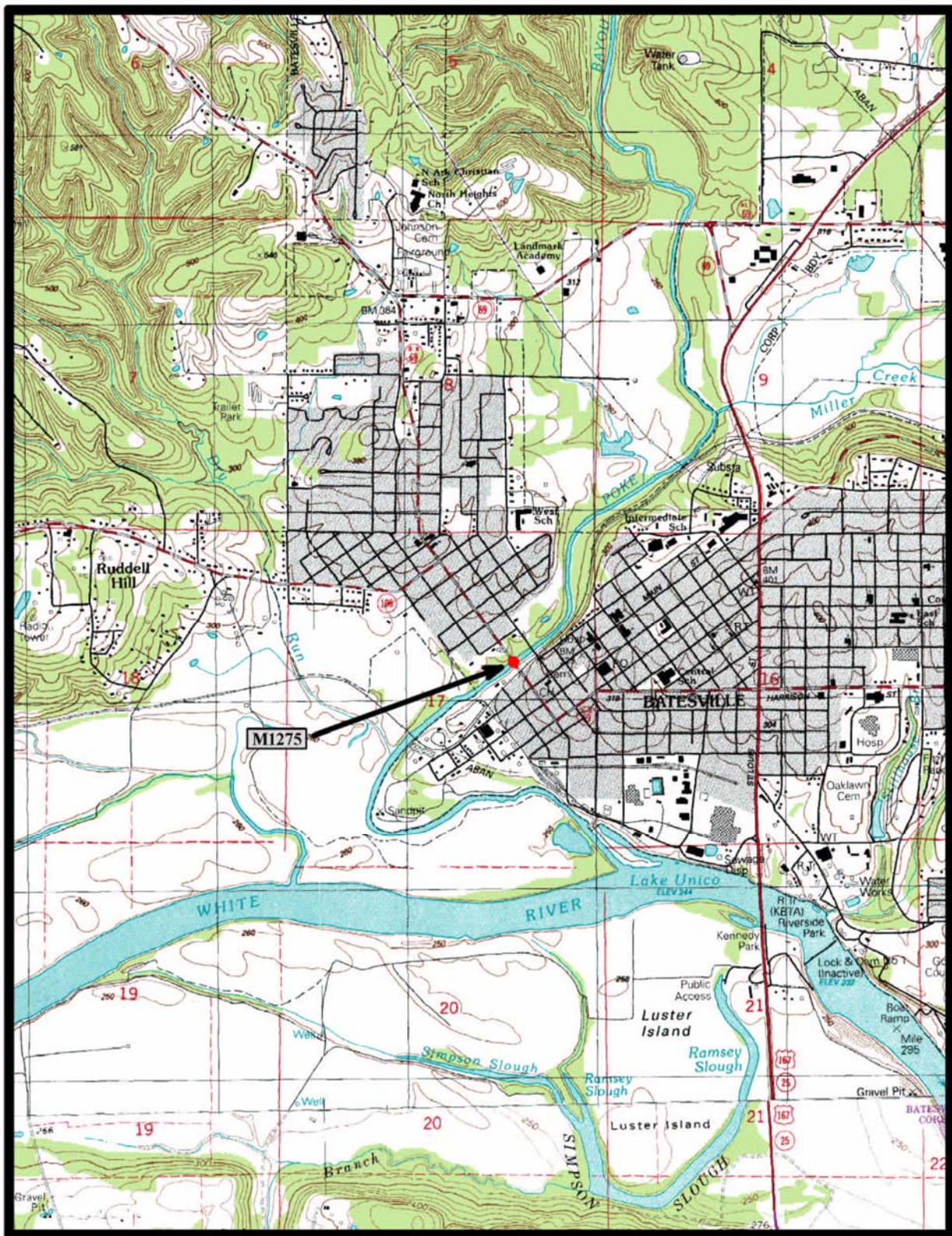


Join of Concrete_Arch_Bridges and Concrete_Arch_Bridge... X

General Attributes

Name	Value
Bridge Number	M1275
Span_Type	Open
Date_Built	1930
County	Independence
Road	SH 69
Crosses	Polk Bayou
Builder	Luten Bridge Company
Number_of_Spans	5
Span_Length	80
Deck_Width	30
Structure_Length	397
Skewed	False
Altered	False
Unique	Luten Concrete Arch
On_NR	False
Demolished	False
Photographed	True
Original_Job	
Replacement_Job	
Plans	False
In_GIS	True
Attribute1	25
Bridge_Number1	M1275
Pool_Reserve	No
Evaluation	Yes
Owner	State

Close



Batesville, Forum 7.5 min. Quads

Notes