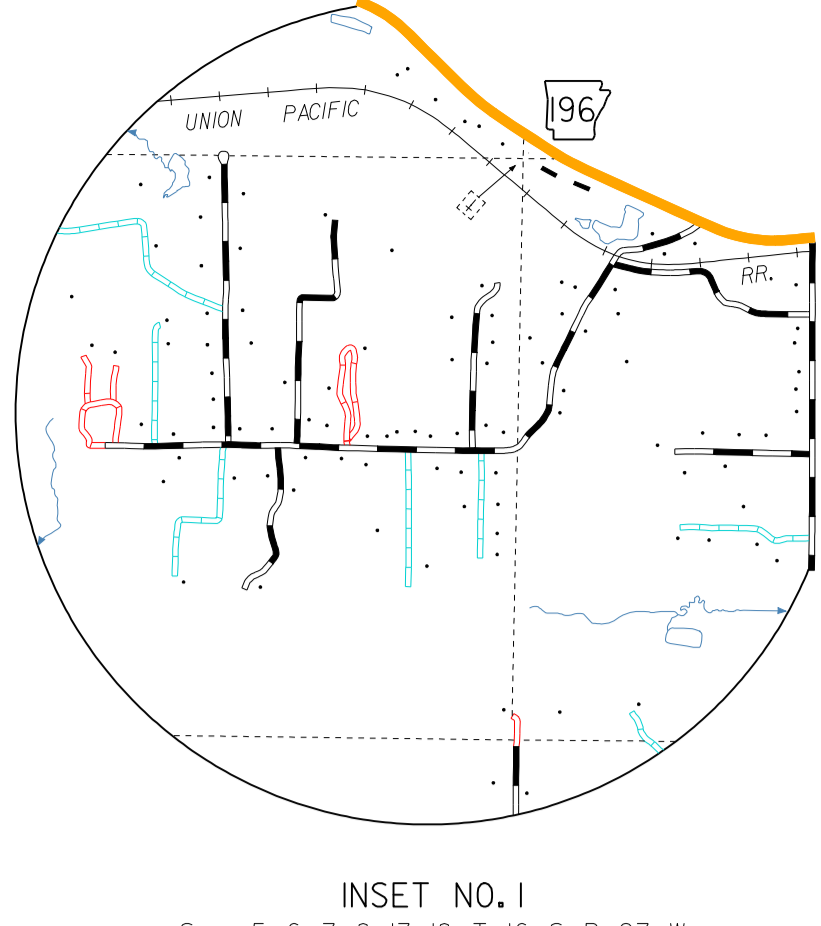
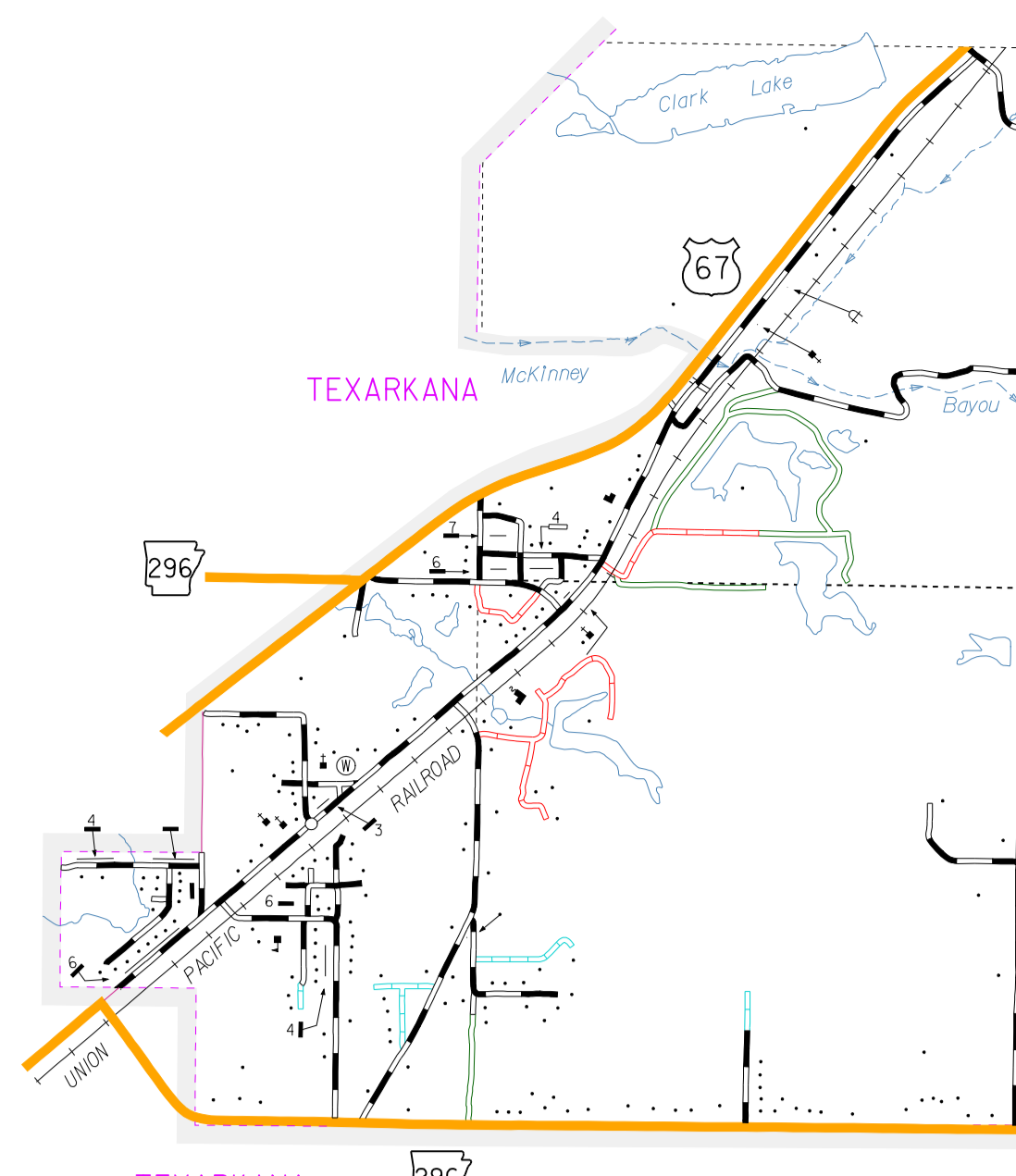


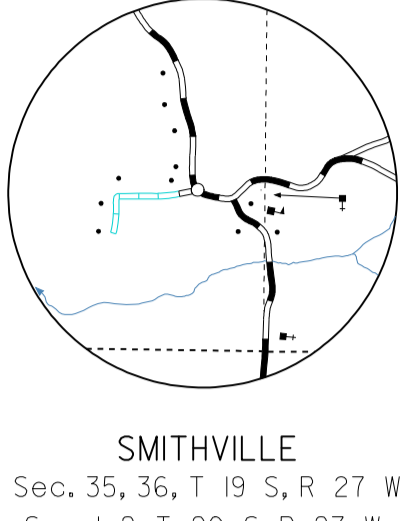
AREA SOUTH OF TEXARKANA
Sec. 15, 16, 17, 18, 19, 20, 21, 22, 23, 24, 25, 26, 27, 28, 29, 30, 31, 32, 33, 34, 35, 36, 37, 38, 39, 40, 41, 42, 43, 44, 45, 46, 47, 48, 49, 50, 51, 52, 53, 54, 55, 56, 57, 58, 59, 60, 61, 62, 63, 64, 65, 66, 67, 68, 69, 70, 71, 72, 73, 74, 75, 76, 77, 78, 79, 80, 81, 82, 83, 84, 85, 86, 87, 88, 89, 90, 91, 92, 93, 94, 95, 96, 97, 98, 99, 100
Scale: 3 times map scale



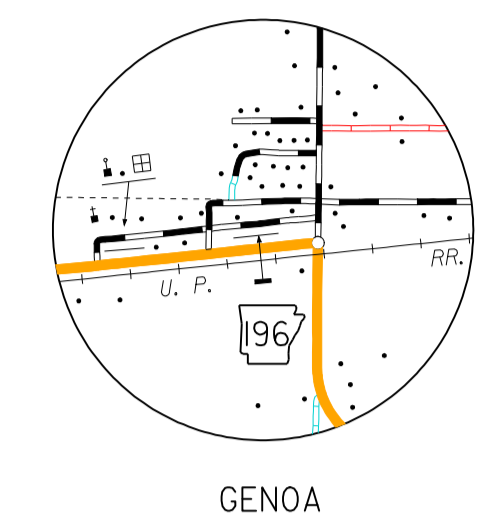
INSET NO. 1
Sec. 4, 5, 6, 7, 8, 9, 10, 11, 12, 13, 14, 15, 16, 17, 18, 19, 20, 21, 22, 23, 24, 25, 26, 27, 28, 29, 30, 31, 32, 33, 34, 35, 36, 37, 38, 39, 40, 41, 42, 43, 44, 45, 46, 47, 48, 49, 50, 51, 52, 53, 54, 55, 56, 57, 58, 59, 60, 61, 62, 63, 64, 65, 66, 67, 68, 69, 70, 71, 72, 73, 74, 75, 76, 77, 78, 79, 80, 81, 82, 83, 84, 85, 86, 87, 88, 89, 90, 91, 92, 93, 94, 95, 96, 97, 98, 99, 100
Scale: 3 times map scale



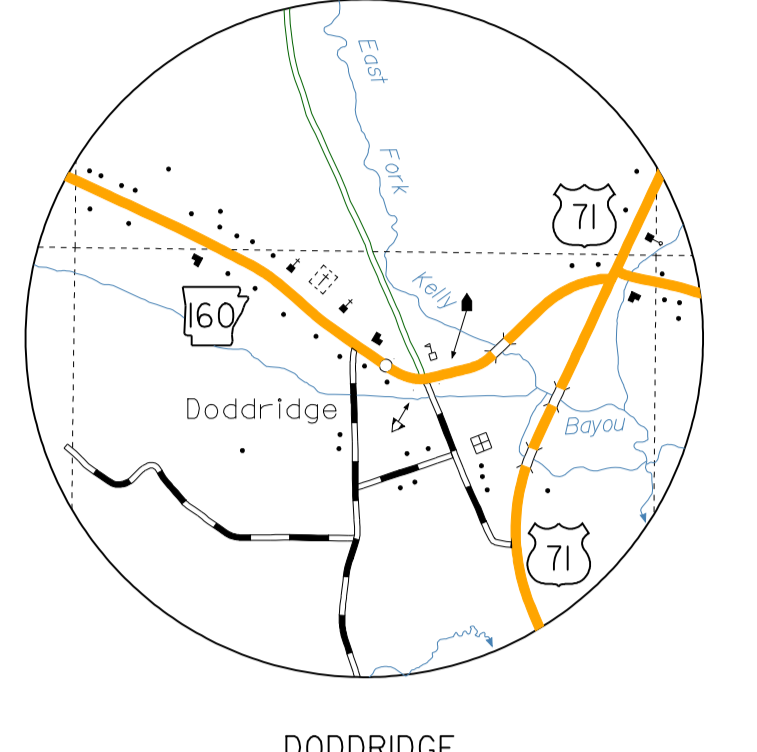
MANDEVILLE
Sec. 35, 36, 37, 38, 39, 40, 41, 42, 43, 44, 45, 46, 47, 48, 49, 50, 51, 52, 53, 54, 55, 56, 57, 58, 59, 60, 61, 62, 63, 64, 65, 66, 67, 68, 69, 70, 71, 72, 73, 74, 75, 76, 77, 78, 79, 80, 81, 82, 83, 84, 85, 86, 87, 88, 89, 90, 91, 92, 93, 94, 95, 96, 97, 98, 99, 100
Scale: 3 times map scale



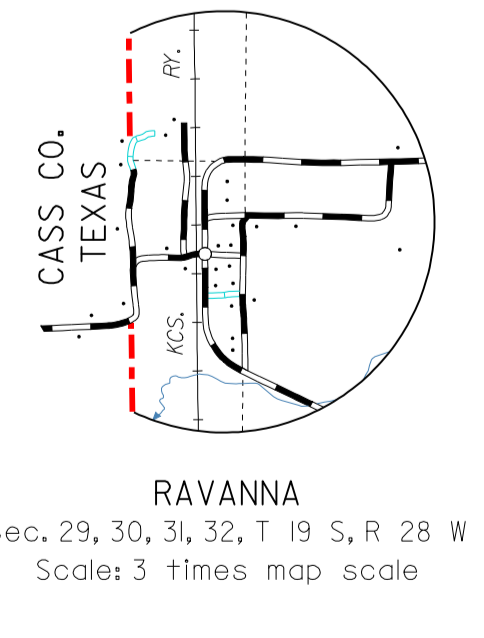
SMITHVILLE
Sec. 35, 36, 37, 38, 39, 40, 41, 42, 43, 44, 45, 46, 47, 48, 49, 50, 51, 52, 53, 54, 55, 56, 57, 58, 59, 60, 61, 62, 63, 64, 65, 66, 67, 68, 69, 70, 71, 72, 73, 74, 75, 76, 77, 78, 79, 80, 81, 82, 83, 84, 85, 86, 87, 88, 89, 90, 91, 92, 93, 94, 95, 96, 97, 98, 99, 100
Scale: 3 times map scale



GENOA
Sec. 4, 5, 6, 7, 8, 9, 10, 11, 12, 13, 14, 15, 16, 17, 18, 19, 20, 21, 22, 23, 24, 25, 26, 27, 28, 29, 30, 31, 32, 33, 34, 35, 36, 37, 38, 39, 40, 41, 42, 43, 44, 45, 46, 47, 48, 49, 50, 51, 52, 53, 54, 55, 56, 57, 58, 59, 60, 61, 62, 63, 64, 65, 66, 67, 68, 69, 70, 71, 72, 73, 74, 75, 76, 77, 78, 79, 80, 81, 82, 83, 84, 85, 86, 87, 88, 89, 90, 91, 92, 93, 94, 95, 96, 97, 98, 99, 100
Scale: 3 times map scale



DODDRIDGE
Sec. 16, 17, 18, 19, 20, 21, 22, 23, 24, 25, 26, 27, 28, 29, 30, 31, 32, 33, 34, 35, 36, 37, 38, 39, 40, 41, 42, 43, 44, 45, 46, 47, 48, 49, 50, 51, 52, 53, 54, 55, 56, 57, 58, 59, 60, 61, 62, 63, 64, 65, 66, 67, 68, 69, 70, 71, 72, 73, 74, 75, 76, 77, 78, 79, 80, 81, 82, 83, 84, 85, 86, 87, 88, 89, 90, 91, 92, 93, 94, 95, 96, 97, 98, 99, 100
Scale: 3 times map scale

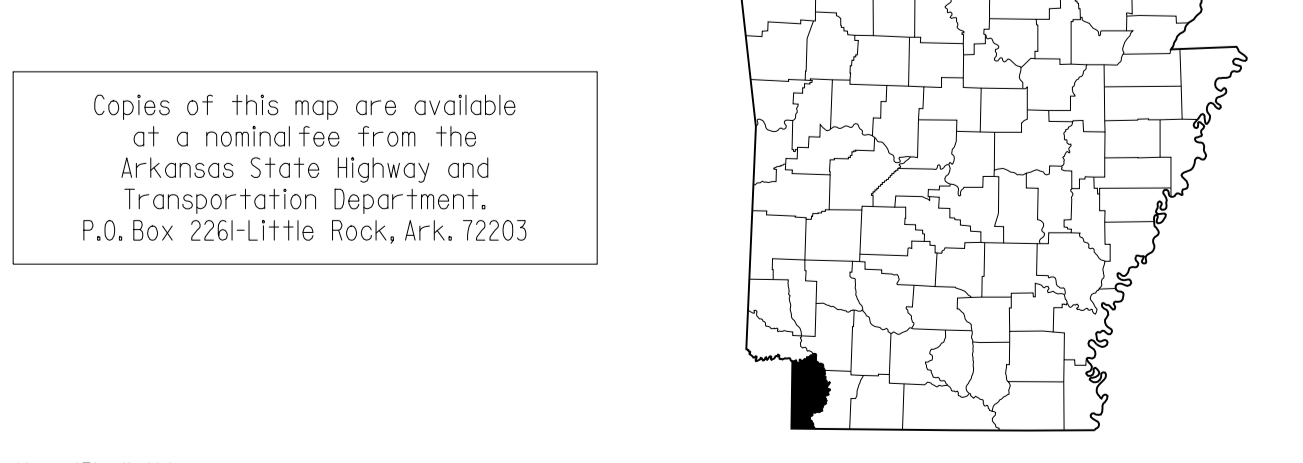
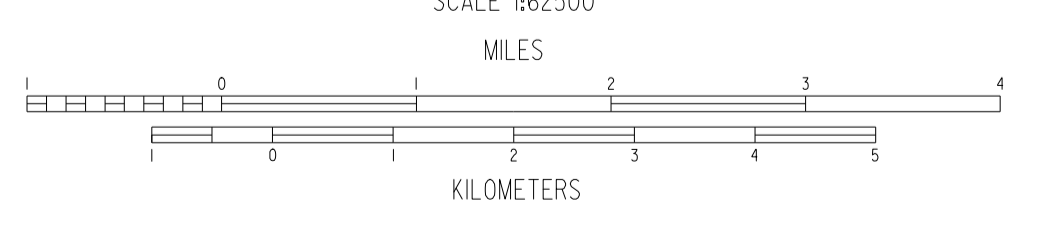


RAVANNA
Sec. 29, 30, 31, 32, 33, 34, 35, 36, 37, 38, 39, 40, 41, 42, 43, 44, 45, 46, 47, 48, 49, 50, 51, 52, 53, 54, 55, 56, 57, 58, 59, 60, 61, 62, 63, 64, 65, 66, 67, 68, 69, 70, 71, 72, 73, 74, 75, 76, 77, 78, 79, 80, 81, 82, 83, 84, 85, 86, 87, 88, 89, 90, 91, 92, 93, 94, 95, 96, 97, 98, 99, 100
Scale: 3 times map scale

- LEGEND**
- STATE BOUNDARY
 - COUNTY BOUNDARY
 - STATE OR COUNTY LINE INDETERMINATE
 - U.S. LAND TOWNSHIP LINE
 - SECTION LINE
 - PARK OR RESERVATION BOUNDARY
 - PAVED STATE OR U.S. HIGHWAY
 - DIVIDED HIGHWAY (ROAD OR HOVE LINES INDICATED)
 - INTERSTATE HIGHWAY
 - U.S. NUMBERED HIGHWAY
 - STATE HIGHWAY
 - PROJECTED ROAD
 - PAVED LOCAL ROAD
 - GRAVEL LOCAL ROAD
 - GRADED & DRAINAGE LOCAL ROAD
 - UNIMPROVED LOCAL ROAD
 - INTERCHANGE
 - RAILROAD (RAIL LINES OF WHICH USED BY RAILROAD STATION)
 - GRADE CROSSING
 - OVERPASS
 - UNDERPASS
 - HIGHWAY BRIDGE (60 FEET OR MORE IN LENGTH)
 - LEVEE OR DUNE
 - MILEAGE BETWEEN POINTS
 - LAKE, RESERVOIR OR POND
 - MARSH OR SWAMP
 - WIDE RIVER OR STREAM
 - INTERMITTENT NAVIGATION
 - SMALL STREAM
 - DRAINAGE DITCH
 - CORPORATE LIMITS AND ROADS THROUGH TOWN
 - COUNTY SEAT
 - OTHER CITIES AND TOWNS
 - MUNICIPAL AIRPORT
 - PRIVATE AIRFIELD
 - FARM UNIT OR DWELLING
 - GROUP OF CLOSELY SPACED DWELLINGS (IF NO HOUSE NUMBER)
 - CHURCH OR OTHER RELIGIOUS INSTITUTION
 - SCHOOL
 - POST OFFICE & POST OFFICE AND BUSINESS
 - MUSEUM, GENERAL
 - CEMETERY
 - CHURCH WITH CEMETERY ADJACENT
 - BUSINESS ESTABLISHMENT
 - FACTORY OR INDUSTRIAL PLANT
 - GRAVEL PIT
 - QUARRY
 - FIRE ENGINE HOUSE
 - CAUTION OR STOPPING STATION
 - POWER SUBSTATION
 - TRAILER PARK
 - FISH HATCHERY
 - OBSERVATION OR LOOKOUT TOWER
 - CAMP OR LODGE
 - GOLF COURSE OR COUNTRY CLUB
 - WATER SUPPLY STANDPIPE OR TANK
 - SEWAGE DISPOSAL PLANT
 - CHICKEN HOUSE OR OTHER LIVESTOCK
 - TOURIST INFORMATION CENTER

GENERAL HIGHWAY MAP
MILLER COUNTY
ARKANSAS

PREPARED BY
ARKANSAS STATE HIGHWAY AND TRANSPORTATION DEPARTMENT
TRANSPORTATION PLANNING AND POLICY DIVISION
IN COOPERATION WITH
U.S. DEPARTMENT OF TRANSPORTATION
FEDERAL HIGHWAY ADMINISTRATION



NOTE: Enlargements of congested areas are five times map scale unless otherwise noted.
Individual maps are available for all active incorporated cities.
Area: 642 Square Miles
Population: 43,462 (2010 Census)
Map Issued: 5-2014; replaces map issued 2-1995
Field Inventory: 1975
Map revisions made from aerial photographs taken 01-02-06
Map completion completed 03-30-10
County map produced using Computer Assisted Cartography.
20,000 foot grid based on Arkansas coordinate system, South Zone.
Map Revised 01-28-14: New section of Hwy. 549 corridor added. (LJL)
Map Revised 03-31-14: Existing part of Hwy. 245 from State Line to Jct. 549 redesignated as Hwy. 614. (LJL)
Map Revised 04-15-14: Hwy. 245 dropped from system. (LJL)
Map Revised 04-15-14: Interchange at State Line reconfigured. (LJL)
Map Revised 11-04-14: New section of I-49 completed. Existing Hwy. 549 redesignated as I-49. (LJL)