

Arkansas State Highway and
Transportation Department

ROUTE SLIP

Date: 6-10-92

LDP TO: ~~XXXXXXXXXX~~
TEB
ATTN: Shop Plans Checkers

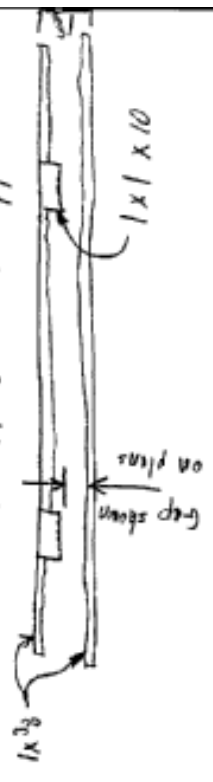
FROM: Mike Coyen

Handle	Prepare Rec. & Return
Your Information	Prepare Draft & Return
Your Signature	Your Answer
Your Recommendation	Investigate & Report
Your Comments	Initial & File
Your File	Note & Forward
Note & Return	Acknowledge Receipt
Sign & Return	See Me
Approve	Per Your Request

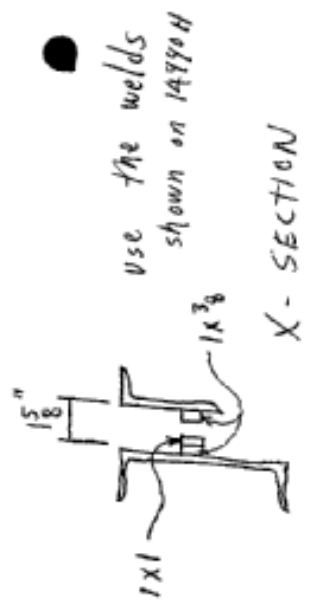
Remarks: For joints 15" or larger using a preformed joint seal, AFCO has been supplying 1x3 seal supports and separate bumper plates at each beam on one side of the joint. This system is unacceptable (by FMH) at end bents with joints 18" or larger because the separate bumper plates would bear on the concrete of the back wall rather than the embedded steel. AFCO has

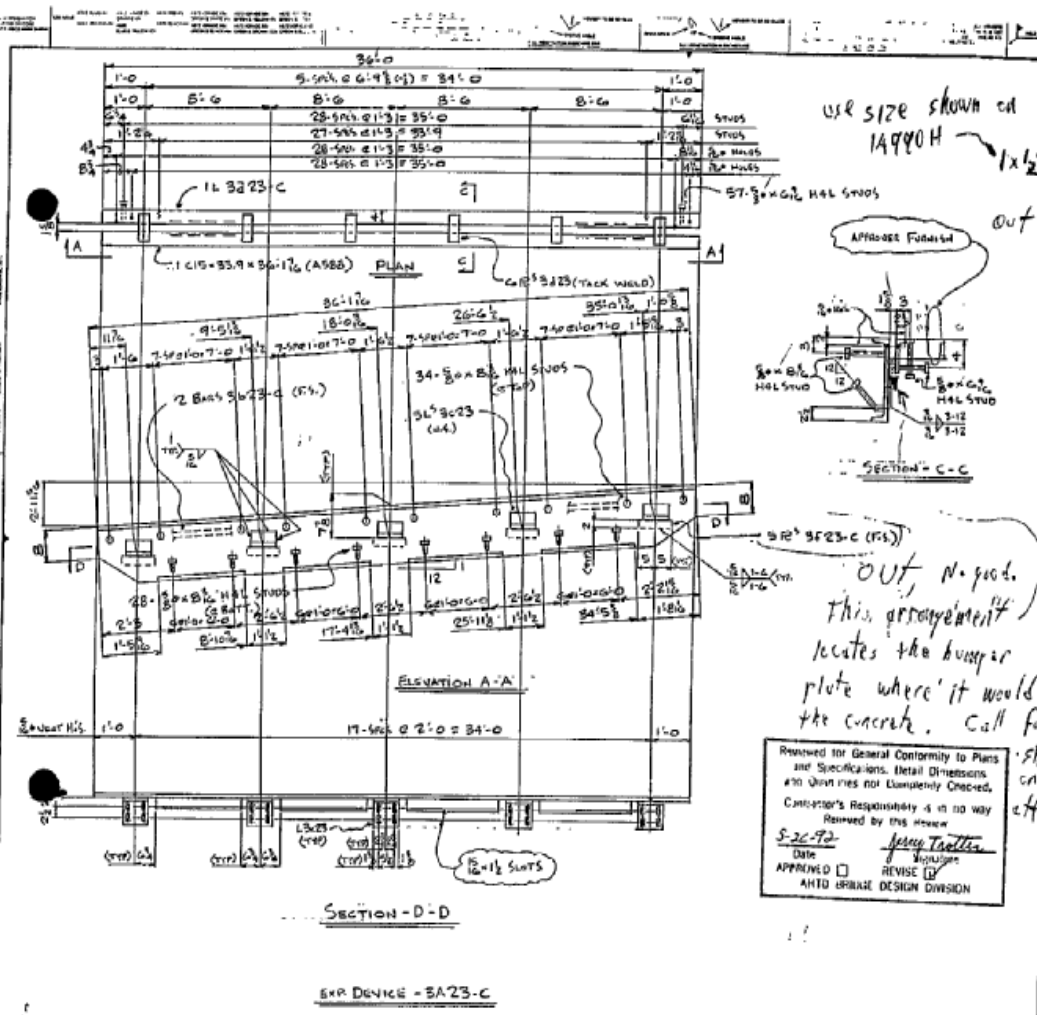
Proposed two solutions which have been approved by FMH:

- 1) Supply an angle with a leg long enough to permit steel to steel bearing (a coped channel is off too)
- 2) Splice a short section of thick bumper plate at each beam into the 1x3 seal support.

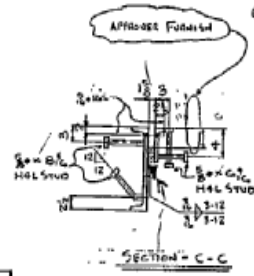


PLAN





USE SIZE SHOWN ON 1A990H $1 \times \frac{1}{2}$ OUT



OUT, No good. This arrangement locates the bumper plate where it would bear on the concrete. Call for the plate FOR APPROX

Reviewed for General Conformity to Plans and Specifications. Detail Dimensions and Quantities for Completeness Checked. Contractor's Responsibility is in no way Relieved by this Review. 5-20-72 Date *Jerry Taitler* Signature APPROVED REVISE AHTD BRIDGE DESIGN DIVISION

BILL OF MATERIALS		ITEM NO.	QUANTITY	UNIT	DESCRIPTION
SRP DEVICE					
1	1	1	1	1	1
2	1	1	1	1	1
3	1	1	1	1	1
4	1	1	1	1	1
5	1	1	1	1	1
6	1	1	1	1	1
7	1	1	1	1	1
8	1	1	1	1	1
9	1	1	1	1	1
10	1	1	1	1	1
11	1	1	1	1	1
12	1	1	1	1	1
13	1	1	1	1	1
14	1	1	1	1	1
15	1	1	1	1	1
16	1	1	1	1	1
17	1	1	1	1	1
18	1	1	1	1	1
19	1	1	1	1	1
20	1	1	1	1	1
21	1	1	1	1	1
22	1	1	1	1	1
23	1	1	1	1	1
24	1	1	1	1	1
25	1	1	1	1	1
26	1	1	1	1	1
27	1	1	1	1	1
28	1	1	1	1	1
29	1	1	1	1	1
30	1	1	1	1	1
31	1	1	1	1	1
32	1	1	1	1	1
33	1	1	1	1	1
34	1	1	1	1	1
35	1	1	1	1	1
36	1	1	1	1	1
37	1	1	1	1	1
38	1	1	1	1	1
39	1	1	1	1	1
40	1	1	1	1	1
41	1	1	1	1	1
42	1	1	1	1	1
43	1	1	1	1	1
44	1	1	1	1	1
45	1	1	1	1	1
46	1	1	1	1	1
47	1	1	1	1	1
48	1	1	1	1	1
49	1	1	1	1	1
50	1	1	1	1	1
51	1	1	1	1	1
52	1	1	1	1	1
53	1	1	1	1	1
54	1	1	1	1	1
55	1	1	1	1	1
56	1	1	1	1	1
57	1	1	1	1	1
58	1	1	1	1	1
59	1	1	1	1	1
60	1	1	1	1	1
61	1	1	1	1	1
62	1	1	1	1	1
63	1	1	1	1	1
64	1	1	1	1	1
65	1	1	1	1	1
66	1	1	1	1	1
67	1	1	1	1	1
68	1	1	1	1	1
69	1	1	1	1	1
70	1	1	1	1	1
71	1	1	1	1	1
72	1	1	1	1	1
73	1	1	1	1	1
74	1	1	1	1	1
75	1	1	1	1	1
76	1	1	1	1	1
77	1	1	1	1	1
78	1	1	1	1	1
79	1	1	1	1	1
80	1	1	1	1	1
81	1	1	1	1	1
82	1	1	1	1	1
83	1	1	1	1	1
84	1	1	1	1	1
85	1	1	1	1	1
86	1	1	1	1	1
87	1	1	1	1	1
88	1	1	1	1	1
89	1	1	1	1	1
90	1	1	1	1	1
91	1	1	1	1	1
92	1	1	1	1	1
93	1	1	1	1	1
94	1	1	1	1	1
95	1	1	1	1	1
96	1	1	1	1	1
97	1	1	1	1	1
98	1	1	1	1	1
99	1	1	1	1	1
100	1	1	1	1	1

SHOWN ON 1A990H OR allow cut of the two options on the left SHEET

AFCO STEEL

PROJECT NO.	361-105
DATE	5-20-72
BY	JERRY TAITLER
CHECKED	
APPROVED	