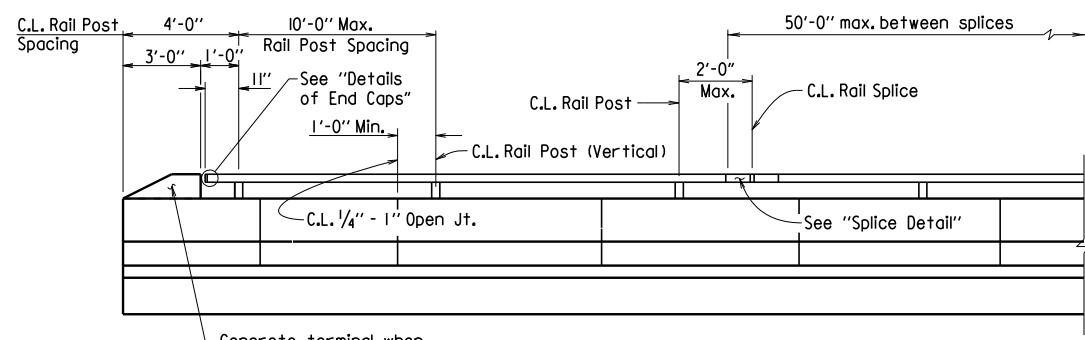
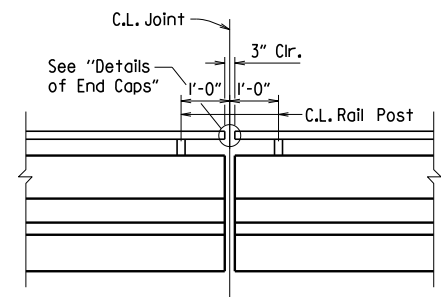


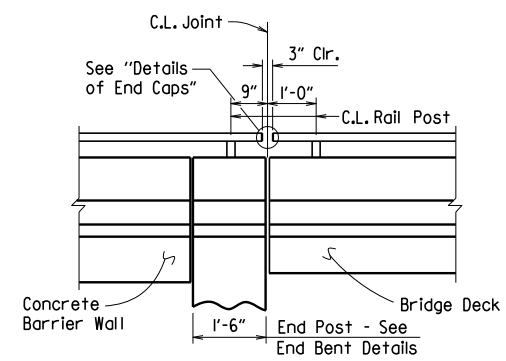
DATE REVISED	DATE FILMED	DATE REVISED	DATE FILMED	FED. ROAD DIST. NO.	STATE	FED. AID PROJ. NO.	SHEET NO.	TOTAL SHEETS
				6	ARK.			
JOB NO.							TYPE H RAILING	55014



RAIL POST SPACING DETAIL
(Horizontal dimensions are along face of rail)



RAIL POST SPACING AT EXPANSION JOINTS



RAIL POST SPACING AT BRIDGE ENDS WITH CONCRETE BARRIER WALL

MATERIALS:

Rail tubing, posts, end caps, and base plates shall conform to AASHTO M 270, Gr. 36 or ASTM A 500-Grade B, and shall be galvanized after fabrication in accordance with Subsection 806.02(c). When required elsewhere in the plans, steel rail members shall receive a powder coating process after galvanizing. Galvanized surfaces shall be prepared in accordance with Subsection 807.87 and the manufacturer's recommendations prior to application of the powder coating process.

The powder coating process shall be a two coat system applied using electrostatic spray. The base coat shall be a thermosetting epoxy powder with a minimum thickness of 2 to 4 mils. The top coat shall be tough polyester powder with a minimum thickness of 2 to 4 mils. The color shall be as shown in the plans. Coated galvanized framework shall have a salt spray resistance of 3000 hours using ASTM B 117 without loss of adhesion. The powder coating process shall be in accordance with manufacturer's recommendations. Any damage to the powder coated finish shall be repaired with a compatible touch-up system in accordance with manufacturer's recommendations and to the satisfaction of the Engineer at the Contractor's expense.

Cast-in-place anchor bolts, nuts, washers, and set screws shall be galvanized high-strength steel or stainless steel. Mixing of galvanized fasteners and stainless steel will not be permitted.

High-Strength Steel:

Cast-in-place anchor bolts shall conform to ASTM A325, Type I. Nuts shall conform to ASTM A563, Grade DH or AASHTO M 292, Grade 2H. Washers shall conform to ASTM F436. Plate Washers shall conform to AASHTO M 270, Gr. 36. Splice Set Screws shall conform to AASHTO M 270, Grade 36. Anchor bolts, nuts, washers, plate washers, and set screws shall be galvanized in accordance with AASHTO M 232, Class C or ASTM B695, Class 50.

Stainless Steel:

Cast-in-place anchor bolts shall conform to ASTM A193 or A320-Grade B8 with a minimum yield strength of 80,000 psi. Nuts shall conform to AASHTO M 292, Grade 8 or ASTM A563. Washers shall conform to ASTM A240, Type 302. Plate Washers shall conform to ASTM A240, Type 302. Splice Set Screws shall conform to ASTM A193 or A320-Grade B8.

Threads on bolts, screws, and nuts shall conform to American Standard Coarse Series, Class 2 FIT, ASA Specification B11. Plate washers shall have dimensions meeting the requirements of ANSI/ASME B18.22.1, Type A plain washer (Wide Series). Neoprene pads shall conform to the requirements of Subsection 807.5(b).

GENERAL NOTES FOR BRIDGE RAILING:

Rail layout shall conform to vertical and horizontal alignment of bridge. All posts shall be vertical.

Maximum post spacing = 10'-0". Minimum distance from centerline post to centerline open or contraction joints in parapet rail = 1'-0".

Splices in rail tubing shall be at 50' maximum spacing. The centerline of splices shall be located a maximum of 2 feet from centerline of post. Rail sections shall be fabricated to attach to at least three posts.

Base plates shall not be placed upon areas that are improperly finished, deformed or irregular.

Bridge railing, including posts, template and base plates, fasteners, and neoprene pads shall be paid for at the contract unit price bid per linear foot for "Metal Bridge Railing (Type H)". When required elsewhere in the plans, powdered coating finish and repair of powdered coating finish shall be considered subsidiary to the item "Metal Bridge Railing (Type H)".

Shop drawings showing details of railing shall be submitted and approval secured prior to fabrication.

SECTION AND SUBSECTION REFER TO THE ARKANSAS STATE HIGHWAY AND TRANSPORTATION DEPARTMENT STANDARD SPECIFICATIONS FOR HIGHWAY CONSTRUCTION (2014 EDITION).

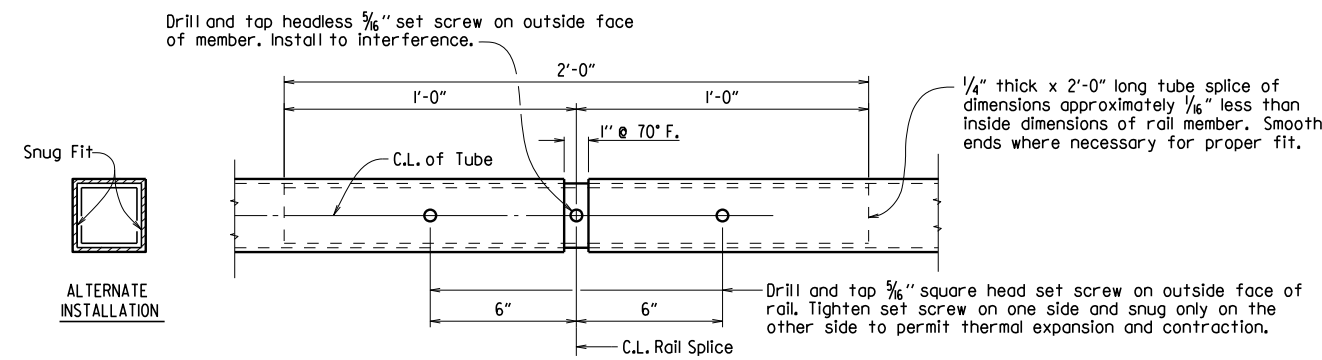
THESE DETAILS ARE APPLICABLE UNLESS OTHERWISE SHOWN IN THE PLAN DETAILS, SPECIAL PROVISIONS OR SUPPLEMENTAL SPECIFICATIONS.

STANDARD DETAILS FOR TYPE H RAILING

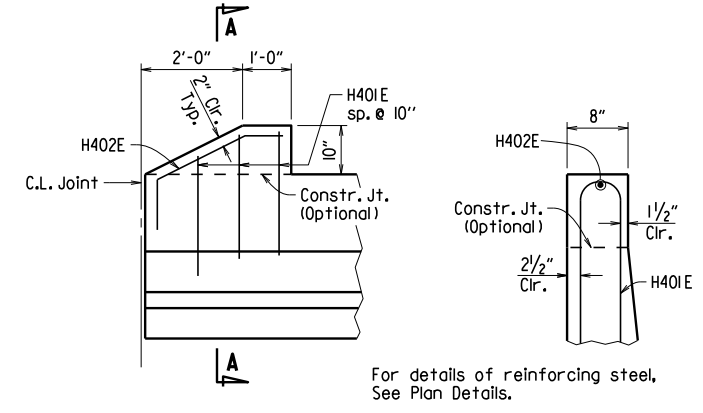
ARKANSAS STATE HIGHWAY COMMISSION

LITTLE ROCK, ARK.

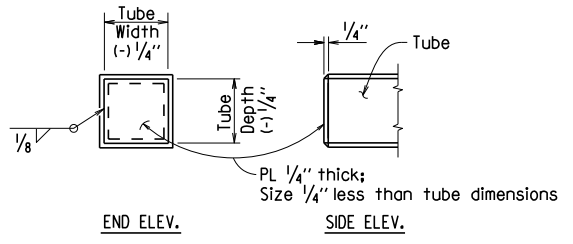
DRAWN BY: A.C.P. DATE: 2/11/2016 FILENAME: b55014.dgn
 CHECKED BY: A.M.S. DATE: 2/11/2016 SCALE: No Scale
 DESIGNED BY: STD. DATE: _____
 BRIDGE NO. DRAWING NO. 55014



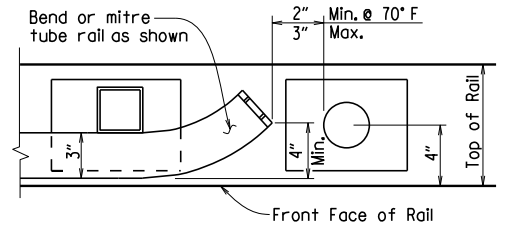
SPLICE DETAIL



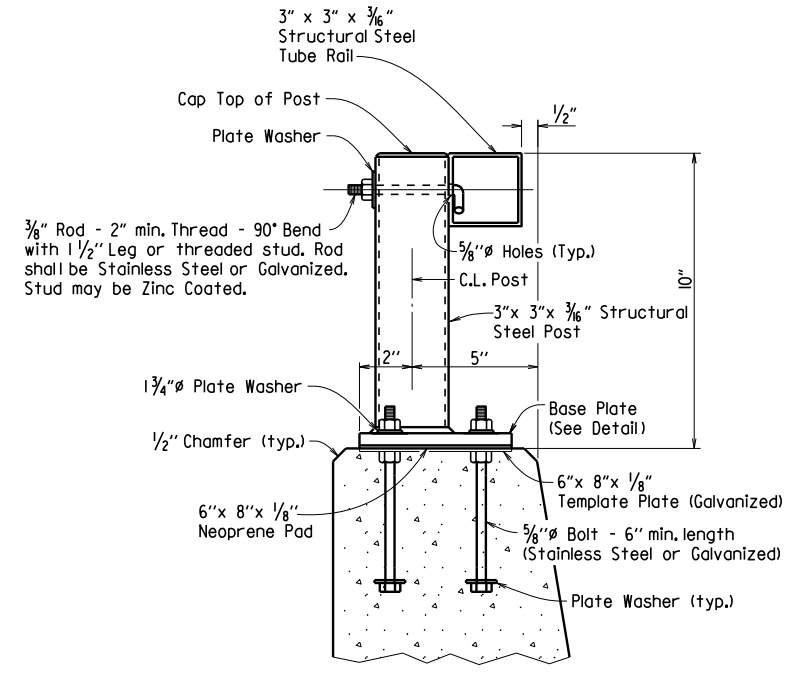
DETAIL X SECTION A-A



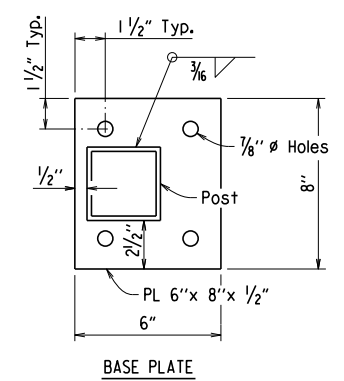
DETAILS OF END CAPS



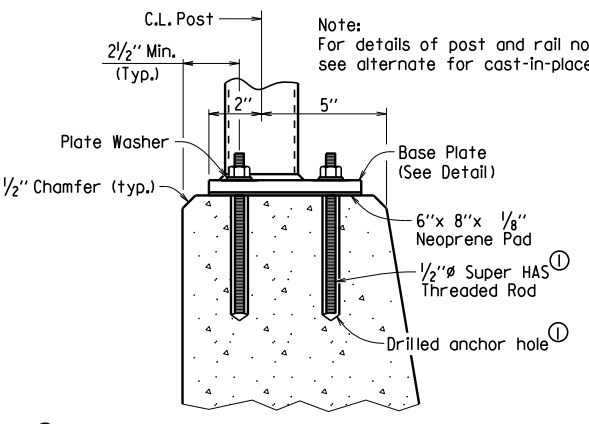
DETAILS OF RAIL TERMINUS AT FENCE POST
(When Chain Link Fence is required)



DETAILS OF POST ANCHOR SYSTEM (CAST-IN-PLACE BOLTS)



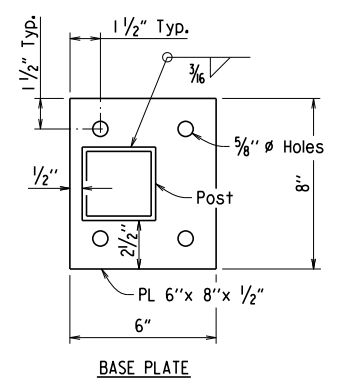
BASE PLATE



① HILTI HIT RE 500 Epoxy Adhesive Anchor System with 4 1/2" embedment or an approved equal.

The HILTI Epoxy Adhesive Anchor System (or approved equal) shall be installed in accordance with Manufacturer's recommendations.

DETAILS OF ALTERNATE POST ANCHOR SYSTEM (EPOXY ADHESIVE ANCHORS)



BASE PLATE