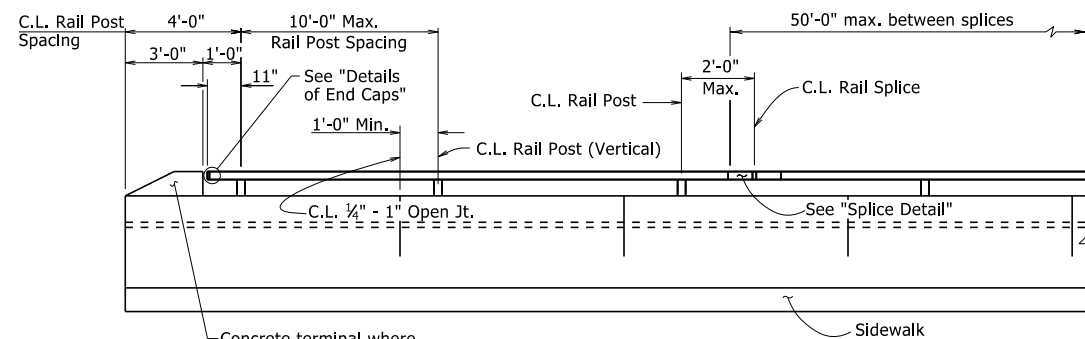
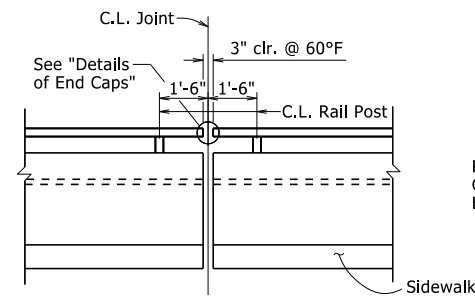


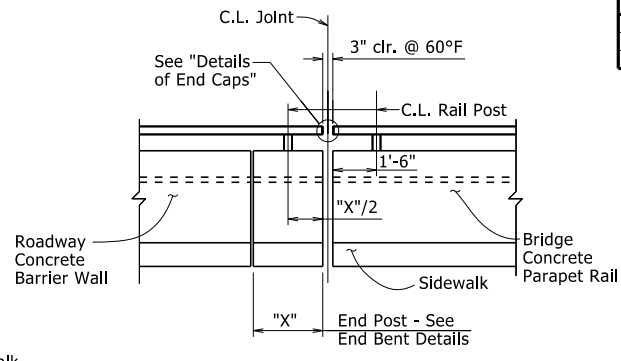
DATE REVISED	DATE FILMED	DATE REVISED	DATE FILMED	FED. ROAD DIST. NO.	STATE	FED. AID PROJ. NO.	SHEET NO.	TOTAL SHEETS
				6	ARK.			
				JOB NO. TYPE H2 RAILING - 55015				



RAIL POST SPACING DETAIL
(Horizontal dimensions are along face of rail)



RAIL POST SPACING AT EXPANSION JOINTS



RAIL POST SPACING AT BRIDGE ENDS WITH CONCRETE BARRIER WALL

MATERIALS:

Rail tubing, posts, end caps, and base plates shall conform to ASTM A709, Grade 36 or ASTM A500-Grade B, and shall be galvanized after fabrication in accordance with Subsection 806.02(c). When required elsewhere in the plans, steel rail members shall receive a powder coating process after galvanizing. Galvanized surfaces shall be prepared in accordance with Subsection 807.87 and the manufacturer's recommendations prior to application of the powder coating process.

The powder coating process shall be a two coat system applied using electrostatic spray. The base coat shall be a thermosetting epoxy powder with a minimum thickness of 2 to 4 mils. The top coat shall be tough polyester powder with a minimum thickness of 2 to 4 mils. The color shall be as shown in the plans. Coated galvanized framework shall have a salt spray resistance of 3,000 hours using ASTM B117 without loss of adhesion. The powder coating process shall be in accordance with manufacturer's recommendations. Any damage to the powder coated finish shall be repaired with a compatible touch-up system in accordance with the manufacturer's recommendations and to the satisfaction of the Engineer at the Contractor's expense.

Cast-in-place anchor bolts, nuts, washers, and set screws shall be galvanized high-strength steel or stainless steel. Mixing of galvanized and stainless steel fasteners will not be permitted.

High-Strength Steel:

Cast-in-place anchor bolts shall conform to ASTM F3125, Grade A325, Type 1. Nuts shall conform to ASTM A563, Grade DH or AASHTO M 292, Grade 2H. Washers shall conform to ASTM F436. Plate Washers shall conform to ASTM A709, Grade 36. Template Plates shall conform to ASTM A709, Grade 36. Splice Set Screws shall conform to ASTM A307, Grade A. Anchor bolts, nuts, washers, plate washers, and set screws shall be galvanized in accordance with AASHTO M 232, Class C or ASTM B695, Class 50.

Stainless Steel:

Cast-in-place anchor bolts shall conform to ASTM A193, Grade B8, Class 2 or A320, Grade B8, Class 2 with a minimum yield strength of 80,000 psi. Nuts shall conform to ASTM A194, Grade 8. Washers shall conform to ASTM A240, Type 302. Plate Washers shall conform to ASTM A240, Type 302. Template Plates shall conform to ASTM A240, Type 302. Splice Set Screws shall conform to ASTM A193, Grade B8, Class 1 or A320, Grade B8, Class 1.

Threads on bolts, screws, and nuts shall conform to American Standard Coarse Series, Class 2 FIT, ASA Specification B1.1. Plate washers shall have dimensions meeting the requirements of ANSI/ASME B18.22.1, Type A plain washer (Wide Series) unless otherwise noted. Neoprene pads shall conform to the requirements of Subsection 807.15(b).

GENERAL NOTES FOR BRIDGE RAILING:

Rail layout shall conform to vertical and horizontal alignment of bridge. All posts shall be vertical. Rail sections shall be fabricated to attach to at least three posts.

Base plates shall not be placed upon areas that are improperly finished, deformed or irregular.

Bridge railing, including posts, templates, and base plates, fasteners, and neoprene pads shall be paid for at the contract unit price bid per linear foot for "Metal Bridge Railing (Type H2)". When required elsewhere in the plans, powdered coating finish and repair of powdered coating finish shall be considered subsidiary to the item "Metal Bridge Railing (Type H2)".

Shop drawings showing details of railing shall be submitted and approval secured prior to fabrication.

SECTION AND SUBSECTION REFER TO THE ARKANSAS STATE HIGHWAY AND TRANSPORTATION DEPARTMENT STANDARD SPECIFICATIONS FOR HIGHWAY CONSTRUCTION (2014 EDITION).

THESE DETAILS ARE APPLICABLE UNLESS OTHERWISE SHOWN IN THE PLAN DETAILS, SPECIAL PROVISIONS, OR SUPPLEMENTAL SPECIFICATIONS.

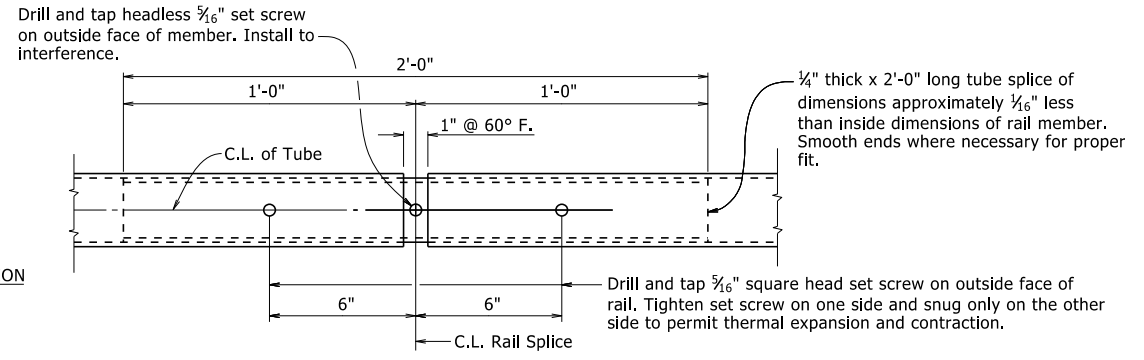
STANDARD DETAILS FOR TYPE H2 RAILING

ARKANSAS STATE HIGHWAY COMMISSION

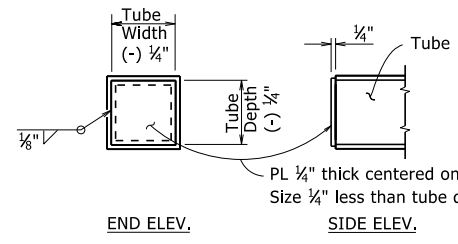
LITTLE ROCK, ARK.

DRAWN BY: KJT DATE: 6/25/2020 FILENAME: b55015.dgn
 CHECKED BY: KWY DATE: 6/25/2020 SCALE: No Scale
 DESIGNED BY: STD. DATE: -

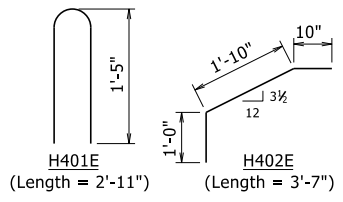
DRAWING NO. 55015



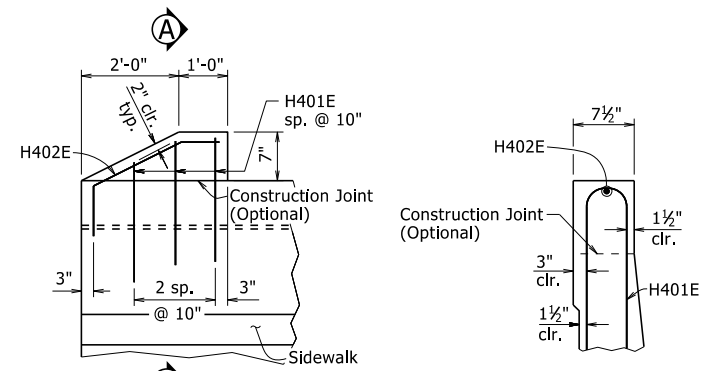
SPLICE DETAIL



DETAILS OF END CAPS

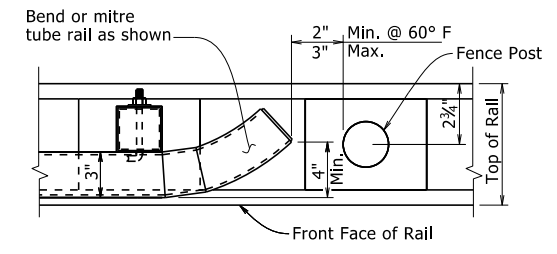


BENDING DIAGRAMS

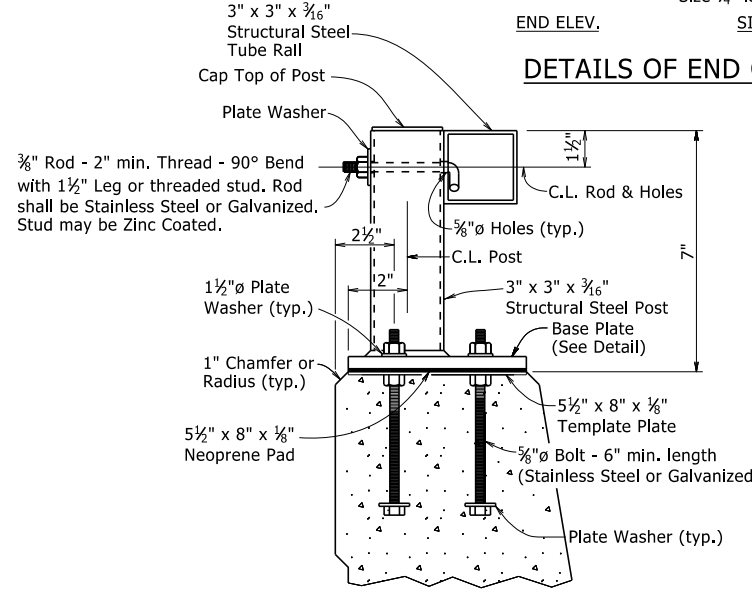


DETAIL X

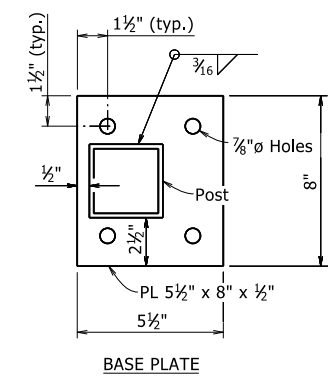
SECTION A-A



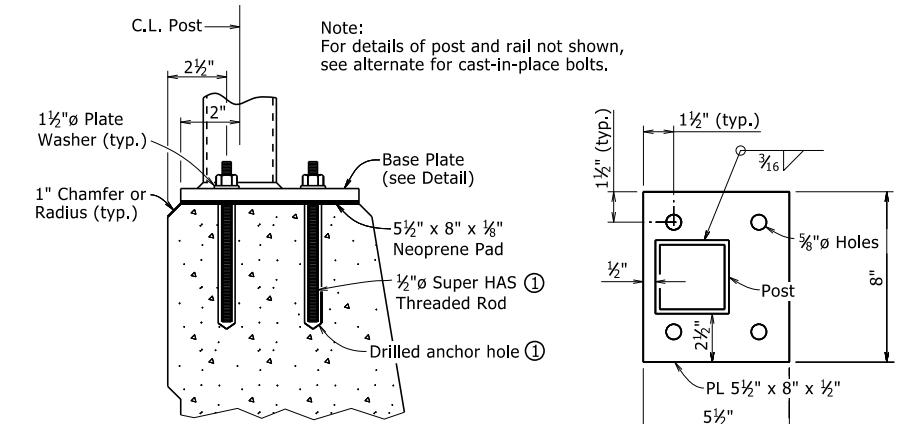
DETAILS OF RAIL TERMINUS AT FENCE POST



DETAILS OF POST ANCHOR SYSTEM
(Cast-in-Place Bolts)



BASE PLATE



DETAILS OF ALTERNATE POST ANCHOR SYSTEM
(Epoxy Adhesive Anchors)

¹ HILTI HIT RE 500 Epoxy Adhesive Anchor System with 4 1/2" embedment or approved equal.
 The Hilti Epoxy Adhesive Anchor System (or approved equal) shall be installed in accordance with Manufacturer's recommendations.

DETAILS OF ALTERNATE POST ANCHOR SYSTEM

(Epoxy Adhesive Anchors)

PRINT DATE: 4/16/2021