



Tony Evans, P.E.
District Construction
Engineer

Golden K-Kiwanis
August 4, 2021





Funding Update

The Journey So Far

The Problem

- Flat Revenues
- Inflation

Temporary Solutions

- 2010 Blue Ribbon Committee Report
- 2017 Governor's Working Group

Permanent Solution

- 2019 Governor's Long Term Funding Plan

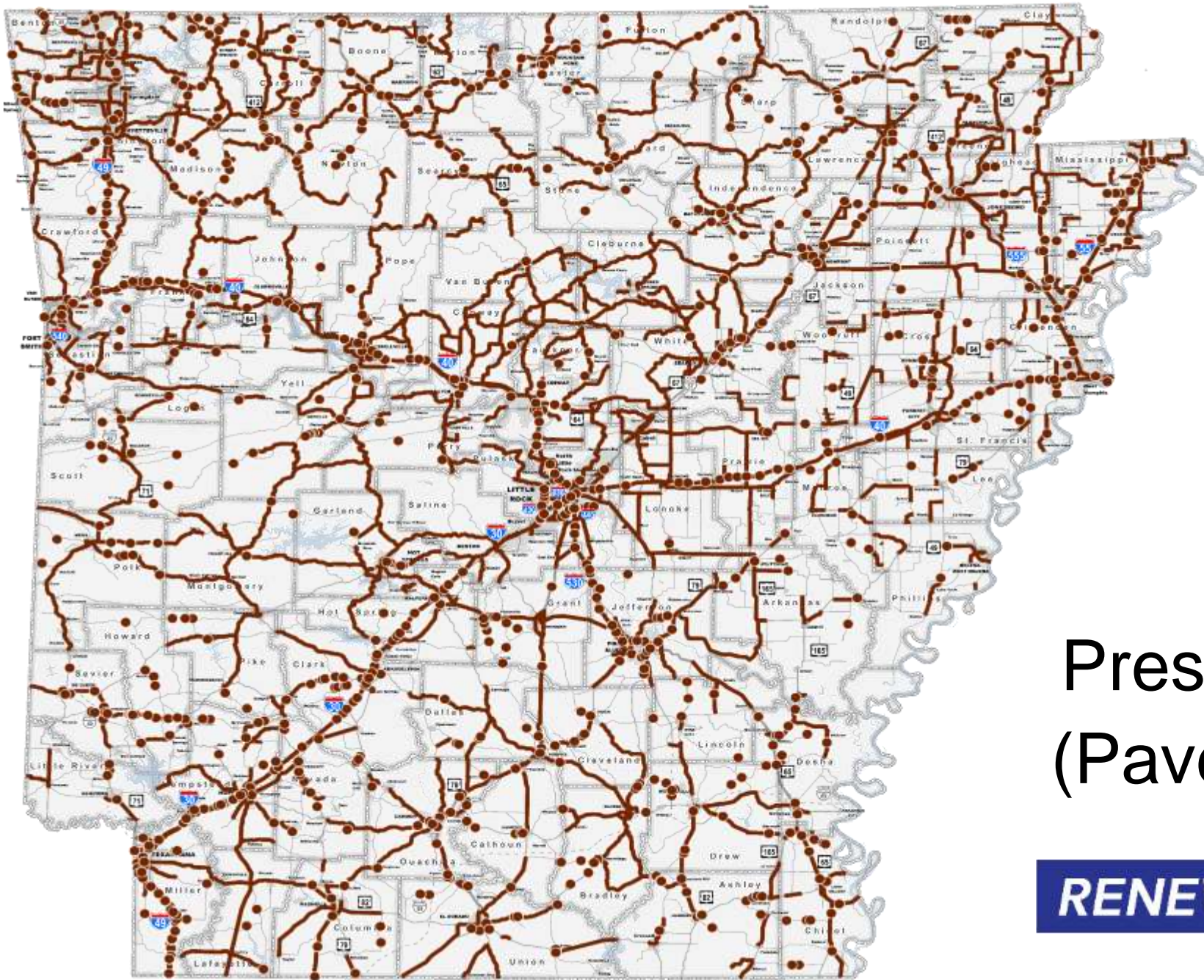




ISSUE 1

Every Arkansan Wins!

- Highways, Roads, and Bridges
- 70% (\$206 M) State Highways
- 15% (\$44 M) County Transportation
- 15% (\$44 M) City Transportation



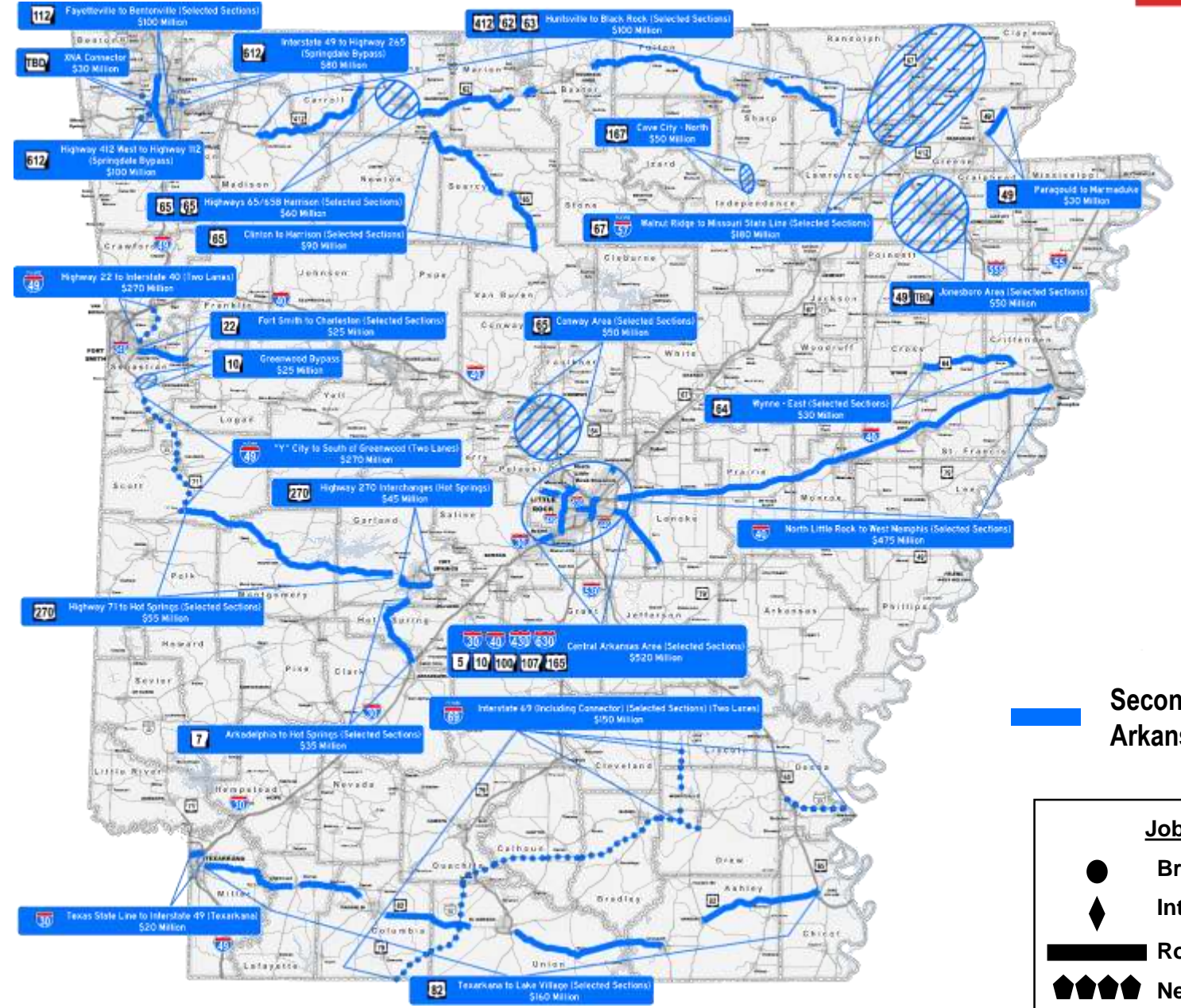
2024-2033
Preservation Projects
(Pavement & Bridges)







Second Connecting Arkansas Program



- Capital and Congestion Relief
- \$3.6 Billion - 20 years
- July 2023



 Second Connecting Arkansas Program

Job Type	
	Bridge
	Interchange
	Roadway
	New Location



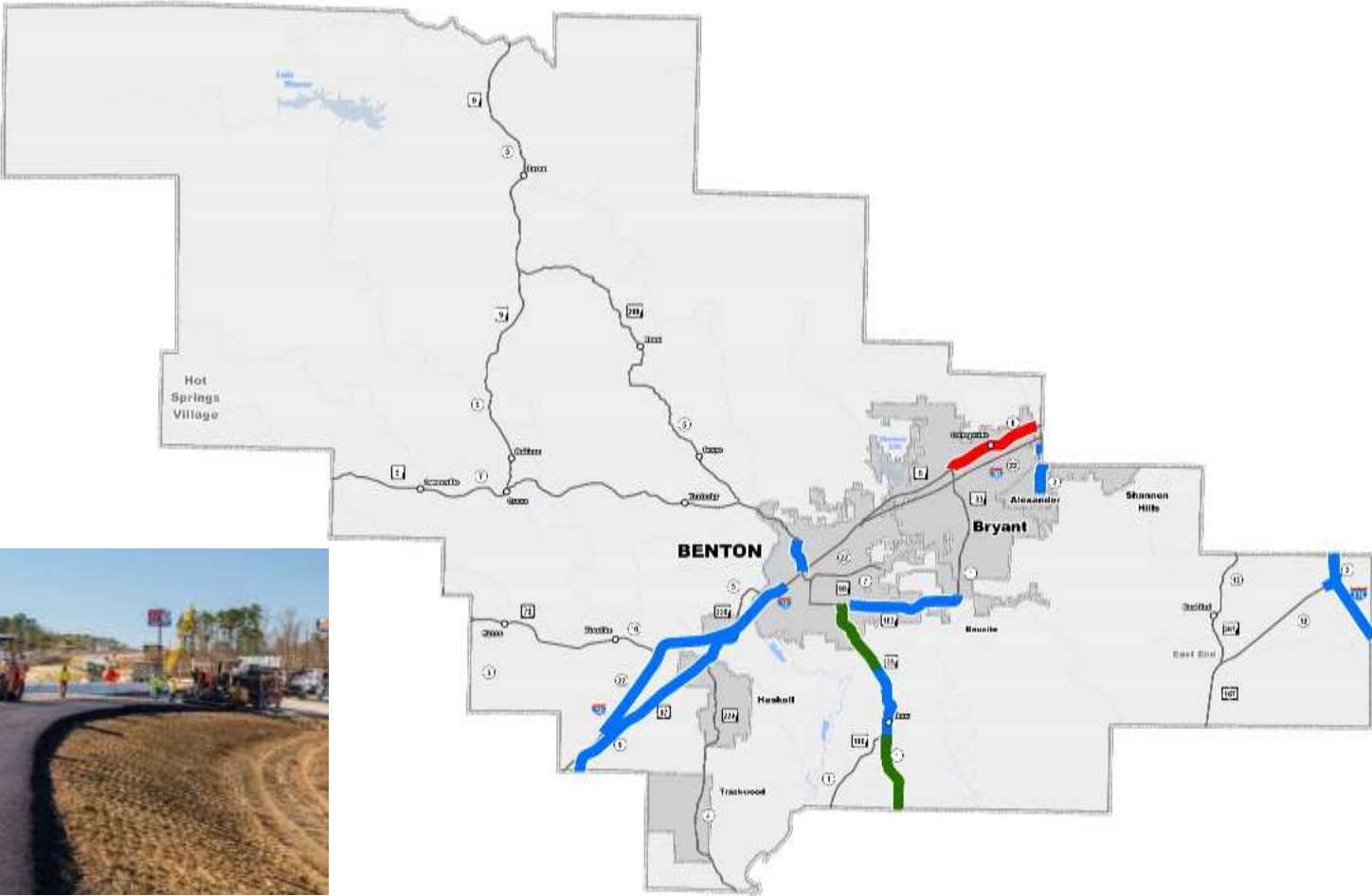
Local Projects

Saline Co. Pavement Preservation

Completed	
Number of Projects:	9
Miles:	33
Amount (Millions):	\$36

Under Construction	
Number of Projects:	1
Miles:	6
Amount (Millions):	\$187

Scheduled	
Number of Projects:	7
Miles:	53
Amount (Millions):	\$25



Saline Co. Bridge Preservation

Completed	
Number of Projects:	3
Miles:	0.6
Amount (Millions):	\$5

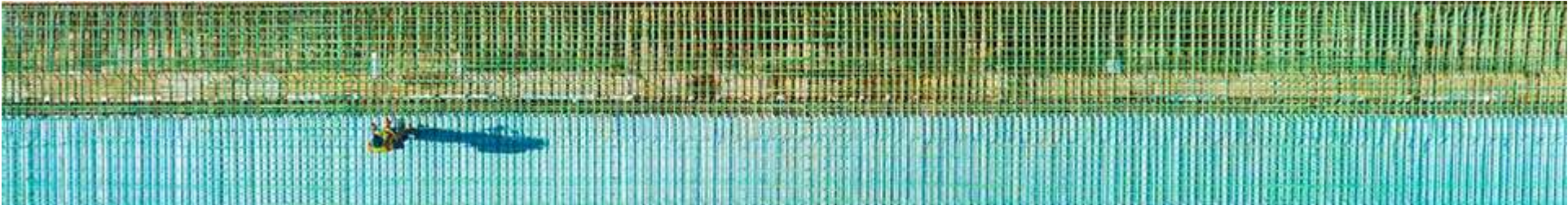


Highway 5 Corridor

Completed	
Number of Projects:	4
Miles:	27
Amount (Millions):	\$12

Under Construction	
Number of Projects:	1
Miles:	3
Amount (Millions):	\$8

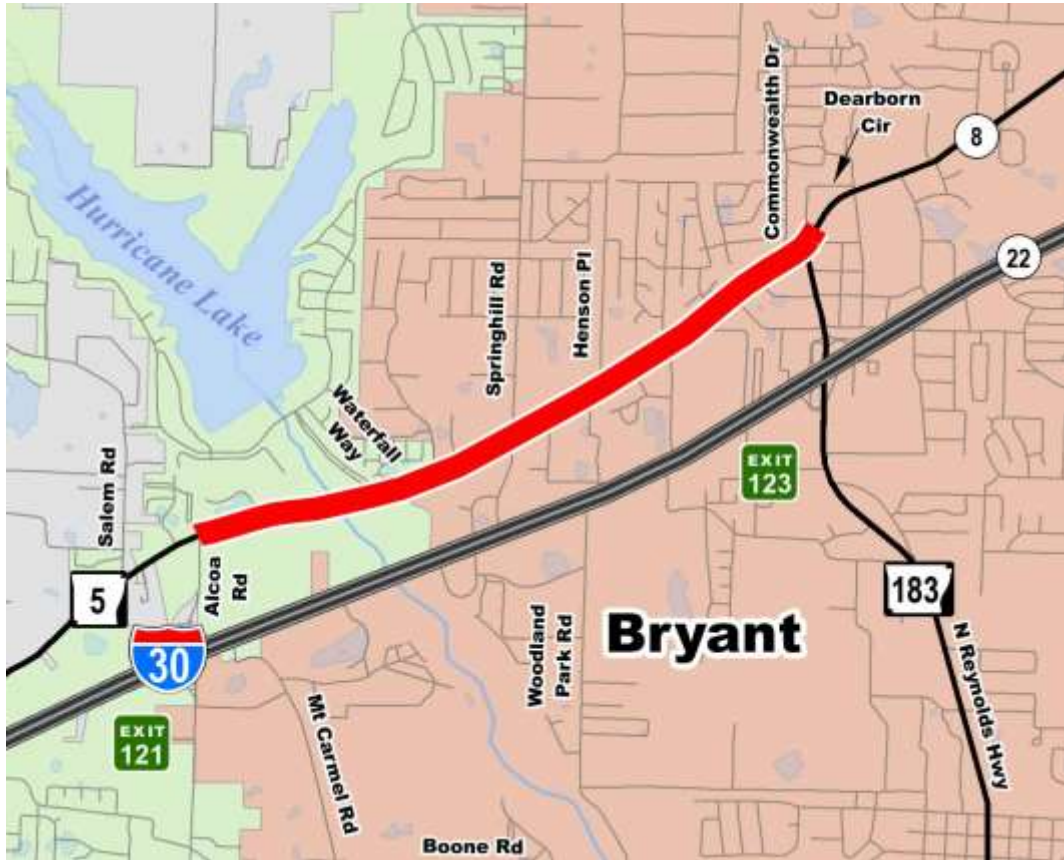
Scheduled	
Number of Projects:	1
Miles:	1
Amount (Millions):	\$3-5



Highway 5 - Bryant

Under Construction

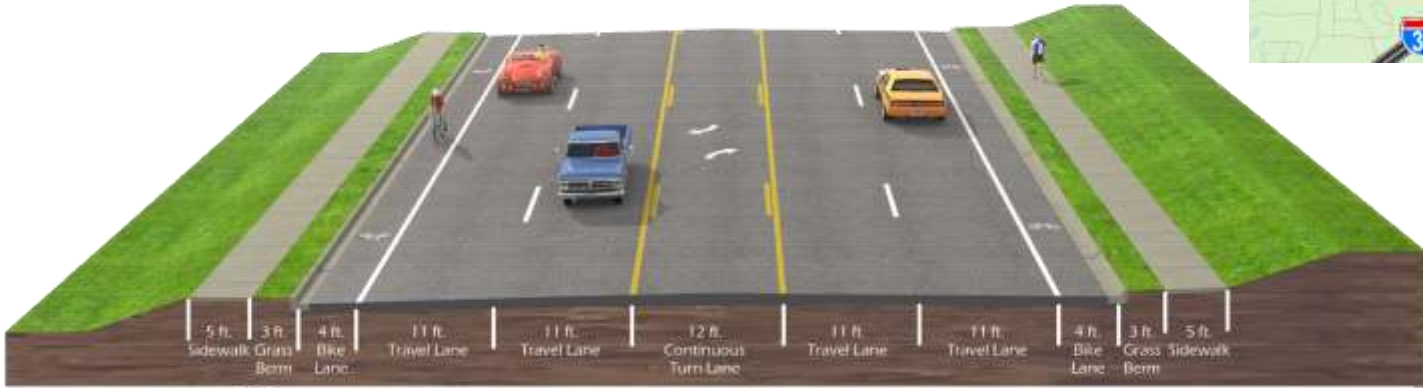
Number of Projects:	1
Miles:	3
Amount (Millions):	\$8



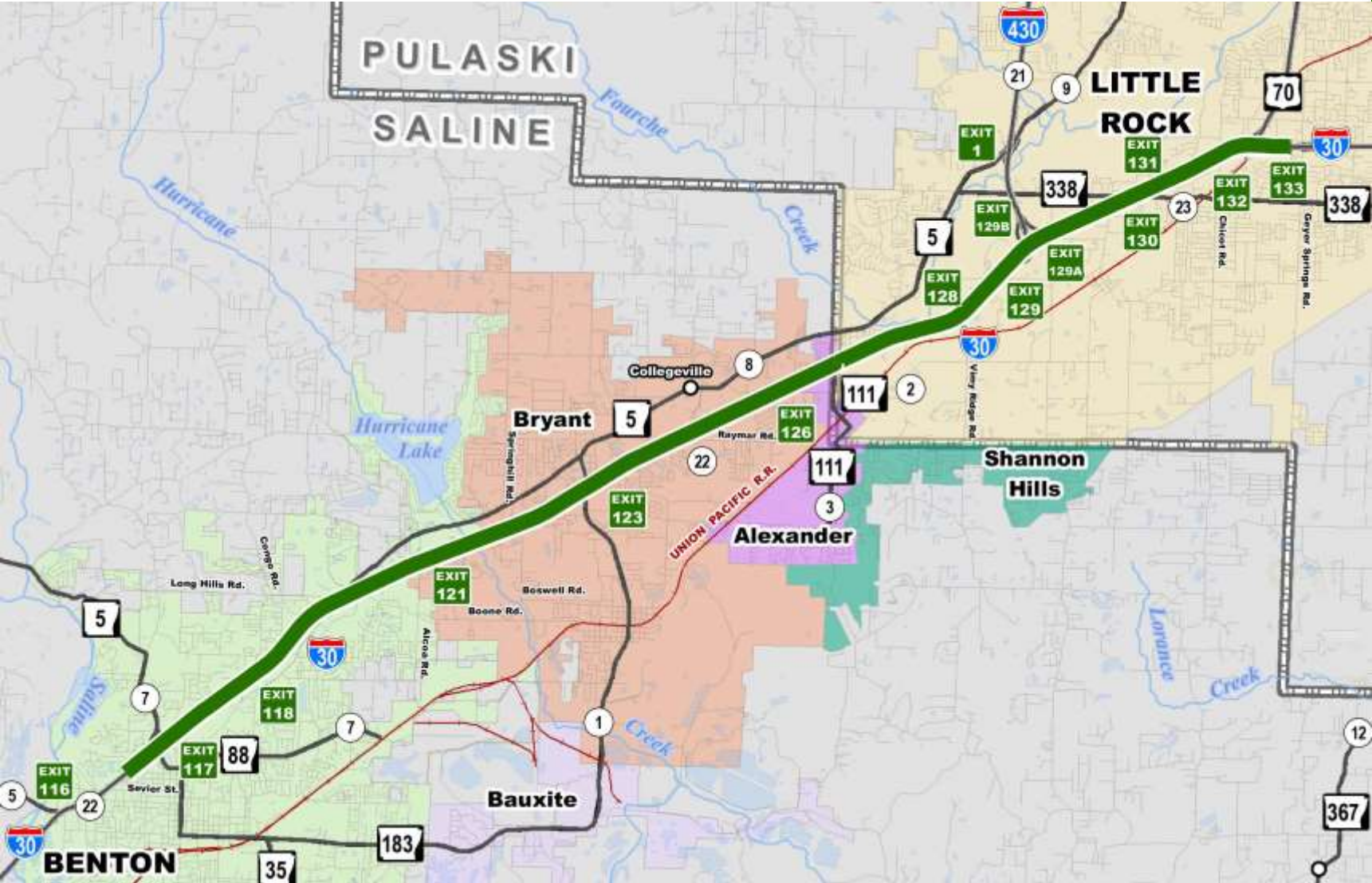
Highway 5 – Benton & Bryant



Scheduled	
Number of Projects:	2
Miles:	4
Amount (Millions):	\$30



Interstate 30



Scheduled	
Number of Projects:	1
Miles:	17
Amount (Millions):	\$30-40

Interstate 30 - Benton

Under Construction

Number of Projects: 1
Miles: 6
Amount (Millions): \$187

PAVING

- I-30 Main Lane
- Hwy 67
- South St.

CONSTRUCTION

- I-30 WB Saline River Relief Bridge
- I-30 WB Hwy 67 Bridge
- Drainage & Excavation

