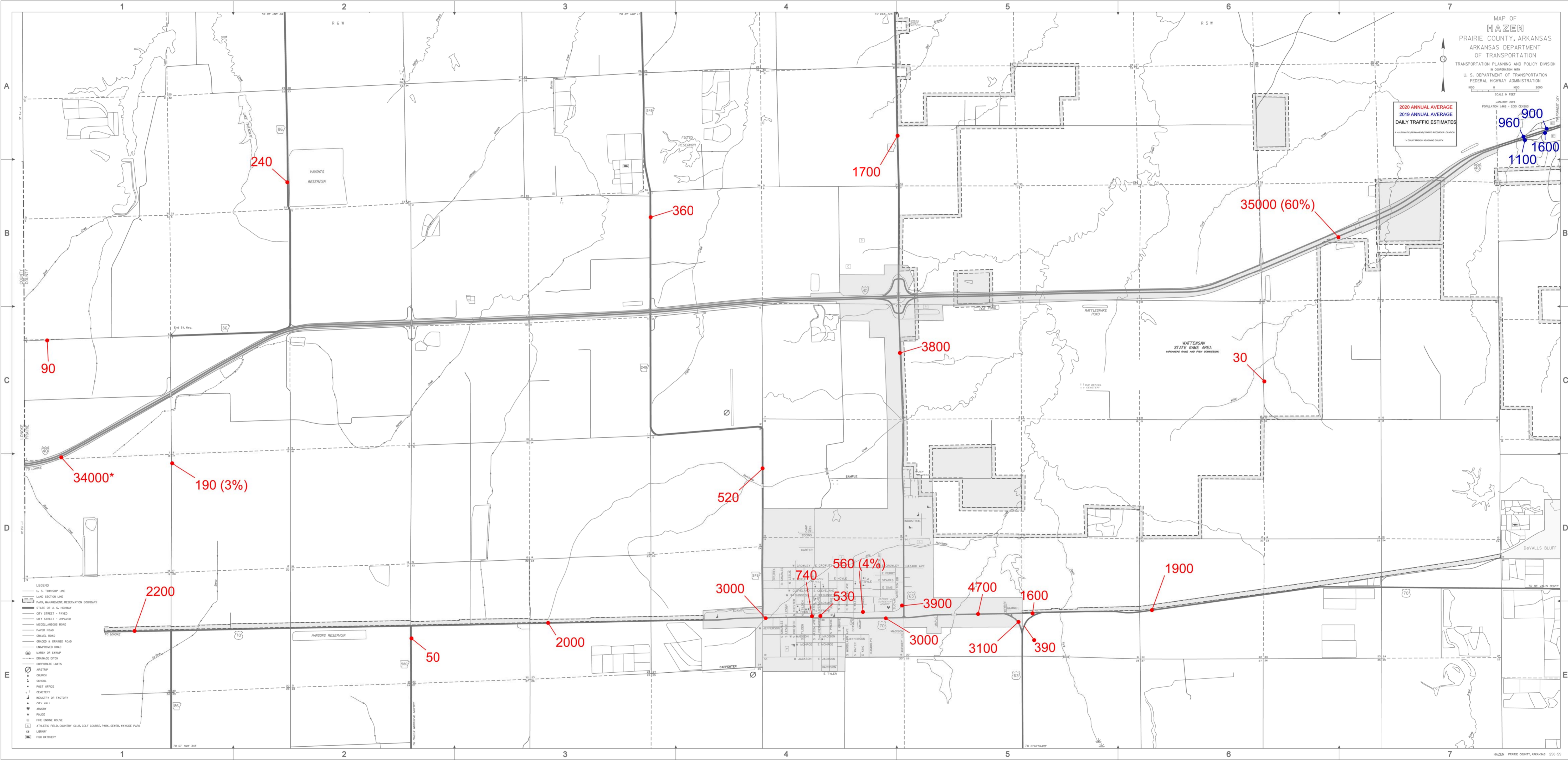


INDEX

- ADAMS
- BOWMAN
- BOYD DR
- CAMP
- CARTER
- E ADAMS
- E CLEVELAND
- E CROWLEY
- E FRY
- E HOYLE
- E JACKSON
- E JEFFERSON
- E MADISON
- E MONROE
- E HENRY
- E SPARKS
- E TYLER
- E WASHINGTON
- EDGEMOND
- GAMMILL
- GRADY
- HARRISON
- HAZARD AVE
- INDUSTRIAL
- MADISON
- MARSH
- N CHARLES
- N CHESTER
- N GROVE
- N HAZEN
- N KING
- N LESLIE
- N LIVERMORE
- N MADISON
- N TILDEN
- N WATER
- N WOODLAWN AVE
- NEL
- ORLICK
- RANDOLPH
- RIVANA
- S CHARLES
- S CHESTER
- S GROVE
- S HAZEN
- S KING
- S LESLIE
- S LIVERMORE
- S MADISON
- S TILDEN
- S WATER
- S WOODLAWN AVE
- SCREETON DR
- SLAVIN
- W CLEVELAND
- W CROWLEY
- W FRONT
- W HOYLE
- W JACKSON
- W JEFFERSON
- W MADISON
- W MONROE
- W WASHINGTON
- WHISKEY LN



- LEGEND
- U. S. TOWNSHIP LINE
 - LAND SECTION LINE
 - PARK, MANAGEMENT, RESERVATION BOUNDARY
 - STATE OF U. S. HIGHWAY
 - CITY STREET - PAVED
 - CITY STREET - UNPAVED
 - MISCELLANEOUS ROAD
 - PAVED ROAD
 - GRAVEL ROAD
 - GRADED & DRAINED ROAD
 - UNIMPROVED ROAD
 - MASH OF SWAMP
 - DRAINAGE DITCH
 - CORPORATE LIMITS
 - WATERSHIP
 - SCHOOL
 - POST OFFICE
 - CEMETERY
 - INDUSTRY OR FACTORY
 - CITY HALL
 - ARMORY
 - POLE
 - FIRE ENGINE HOUSE
 - ATHLETIC FIELD, COUNTRY CLUB, GOLF COURSE, PARK, SENIOR, WAYSIDE PARK
 - LIBRARY
 - FISH HATCHERY