

ARKANSAS DEPARTMENT
OF
TRANSPORTATION

SELF-EVALUATION OF PROGRAMS,
FACILITIES & SERVICES
& TRANSITION PLAN

Updated December 2011

ARKANSAS DEPARTMENT OF TRANSPORTATION

SELF-EVALUATION OF PROGRAMS, FACILITIES & SERVICES

Introduction

The Americans with Disabilities Act (ADA) of 1990 prohibits discrimination against people who have disabilities. Title II of the ADA specifically addresses the subject of making public services and public transportation accessible to those with disabilities. We are required to ensure the public has access to all programs, facilities and services provided by our agency. [28 C.F.R. § 35.150]. We are required to assess our programs, facilities and services for accessibility and any possible barriers and to create and implement a transition plan to address any deficiencies. [28 C.F.R. § 35.105].

A committee was formed of representatives from all divisions and EEO Section Head served as coordinator. Staff Attorney Ann Dodson served as chair of the committee. Ray Gruver, Jr., Facilities Manager is responsible for ensuring all updates are completed.

The self-evaluation plan consisted of each division completing self-evaluation questionnaires about its programs which include public involvement and its facilities which may require public access. It also consisted of a review of all of our facilities and properties to ensure compliance with all ADA accessibility requirements. All facilities, policies, and communications were assessed to ensure compliance with Title II of the ADA.

The Code of Federal Regulations further requires that Departments of Transportation provide an opportunity for people with disabilities and other interested individuals or groups, the opportunity to review and comment on the Self-Evaluation and encourages people with disabilities to actively participate in the evaluation process. A public involvement meeting was held in the Central Office Auditorium on October 13, 2011; from 4:00 p.m. to 7:00 p.m. Notice of this meeting was publicized on the arkansashighways.com and in three newspapers on September 29, 2011, including the Northwest Arkansas Newspaper, Arkansas Democrat-Gazette, and South Arkansas Sun. Additionally, notice was sent to several disability organizations inviting their comment.

After the Self-Evaluation, Departments of Transportation are required to develop a Program Access Plan, aka a Transition Plan, to address any deficiencies. The plan is required to be updated every three to five years.

The Transition Plan consists of the following elements:

1. A list of physical barriers in the Department's facilities that limit accessibility of individuals with disabilities (the self-evaluation),
2. A detailed description of the methods to remove these barriers and make the facilities accessible,
3. A schedule for taking the necessary steps,
4. The name of the official responsible for implementation,
5. A record of the opportunity given to the disability community and other interested parties to participate in the development plan.

TABLE OF CONTENTS

I. Statement of Nondiscrimination.....	4
II. Self Evaluation to Assess Physical Barriers	5
III. Methods to Remove Barriers	81
IV. Steps to Remove Barriers	81
V. Notice of Public Meeting •.....•.....•	89

I. **NON-DISCRIMINATION STATEMENT**

The Arkansas Department of Transportation (ARDOT) complies with all civil rights provisions of federal statutes and related authorities that prohibit discrimination in programs and activities receiving federal financial assistance. Therefore, the ARDOT does not discriminate on the basis of race, sex, color, age, national origin, disability, religion (*not applicable as a protected group under the FMCSA Title VI Program*), LEP, or low-income status in the admission, access to and treatment in ARDOT's programs and activities, as well as the ARDOT's hiring or employment practices. Complaints of alleged discrimination and inquiries regarding the ARDOT's nondiscrimination policies may be directed to Joanna P. McFadden, Section Head - EEO/DBE (ADA/504/Title VI Coordinator), P. O. Box 2261, Little Rock, AR 72203, (501) 569-2298, (Voice/TTY 711), or the following email address: Joanna.McFadden@ardot.gov

Free language assistance for Limited English Proficient individuals is available upon request. This notice is available from the ADA/504/Title VI Coordinator in large print, on audiotape and in Braille.

II.

SELF EVALUATION TO ASSESS ANY PHYSICAL BARRIERS IN THE DEPARTMENT'S FACILITIES THAT MAY LIMIT ACCESSIBILITY OF INDIVIDUALS WITH DISABILITIES

(see following pages)

SURVEY RESPONSES

	PROGRAMS/ACTIVITIES PROVIDED	GOVERNING POLICIES	CONTACT WITH PUBLIC?	WHERE?	POSSIBLE BARRIERS
DIVISION/ DISTRICT					
Public Affairs	press releases & information dissemination	FOI & Department policies	daily basis	in office	no known barriers
Communications	radio communications, road reports, communications with highway police	Manual for Uniform Traffic Control Devices, 940-CFR, AHTD ITS Policies & Procedures, MOU, Safety Manual	daily	telephone only	no known barriers
Intelligent Transportation Systems	develops, implements and manages ITS equipment utilized throughout the state	same as above	no direct public contact	n/a	no known barriers
Pavement Profiling & Marketing	pavement marking & striping crews do striping, minor overlays, patches and left turn installations ...	Manual on Uniform Traffic Control Devices, Ark. Motor Vehicle & Traffic Laws & State Hwy Commission Regulations & Safety Manual	direct public contact is very limited	only if they come into contact out in the field	no known barriers
Facilities Management	design & development of plans and specs for project oversight for construction of new or remodeled building (ie tourist info centers, rest areas)	ADA Accessibility Guidelines, Rest Area Maintenance Manual, Manual for Vegetation Control, Safety Manual	no direct public contact except for the construction mgmt team	emails, letters and construction site meetings	only possible barriers would be on construction sites & if need arises then meeting locations can be changed
Maintenance Mgmt Section	organize state force resources and establish various levels of maintenance to keep highways in sound condition	Safety Manual, Good Neighbor Policy, Operations Policy	no direct contact with public	n/a	no known barriers

SURVEY RESPONSES

	PROGRAMS/ACTIVITIES PROVIDED	GOVERNING POLICIES	CONTACT WITH PUBLIC?	WHERE?	POSSIBLE BARRIERS
DIVISION/ DISTRICT					
Traffic Services	design, manufacture, installation & maintenance of traffic signs & conducting traffic studies	MUTCD, Safety Manual, Standard Highway Signs, Dept. Policies on Traffic Operations, Sign Shop Operations, Policy on Geometric Design of Hwys & Streets, AMV & Traffic Laws & State Hwy Commn Regs	only public contact is with Traffic Operations section when requests for studies are made. The requests are made through written communications, by telephone & in person in the field	through mail & in the field	no known barriers
Traffic Signal Operations	perform traffic studies at highway intersections ...	MUTCD, National Electric Code, Department Policies, AMY & State Regs, Manufacturers guidelines for equipment	contact with public is primarily by phone, email & written correspondence. In some cases we have public hearings at municipal or county facilities	materials annex, maintenance division	no known barriers
Heavy Bridge	maintenance, repair & inspection of 62 of the largest bridges in the State	Bridge Inspection Manual, MUTCD	no direct contact with public	n/a	no known barriers
Computer Services Division	provides the information resources and support necessary to meet AHTD's overall mission and includes automation services, data mgmt, data storage, data processing, LAN, WAN, ...	Department Administrative Orders and Policies	no direct contact with public	n/a	no known barriers
Construction Division	responsible for administering hwy and bridge construction projects let to contract	Department Administrative Orders and Policies	daily basis (with contractors, subcontractors & vendors)	Construction office and Contract Estimates section on 9th floor	no known barriers
Environmental	ensures compliance with NEPA regs pertaining to early and ongoing public involvement during the project development process	NEPA , 23 USC 128, 23 CFR 771.111, 40 CFR parts 1500-1506, Executive Order 12898, Title VI of Civil Rights Act 1964, Title II of the ADA ...	yes by distributing flyers in project areas, by telephone, email, newspaper/radio advertisements, and at public meetings/hearings.	public hearings & meetings are held various places	no known barriers

SURVEY RESPONSES

	PROGRAMS/ ACTIVITIES PROVIDED	GOVERNING POLICIES	CONTACT WITH PUBLIC?	WHERE?	POSSIBLE BARRIERS
DIVISION/ DISTRICT					
Beautification section	billboard control, collecting fees associated with pennit process, identifies & coordinates removal of illegal signs/billboards, junkyard control...	FHBA of 1965, Department Policies & regs., Legislative Acts	personal contact, email, letters, phone	usually at owner's place of business, home or billboard sites	no visual or hearing communication devices onsite
Equipment & Procurement	procure commodities and services for the Dept. through small purchase provisions, quotation, sealed bidding ...	State law & regs., AHTD accounting Manual, EMS!EMF, EPMPP, AHTD Purchasing Card Program Policies & Guidelines Manual	regular personal visits from vendors, email & telephone	Equipment & Procurement Division Headquarters /Central Hops	no physical or restroom barriers but lack of communication devices for the hearing and visually impaired
Fiscal Services	accounts payable, receivables, federal aid billing, utility audits, payroll, financial reporting, and retirement benefits	The accounting manual & the Arkansas Code	AHTD retirees & beneficiaries are in contact with us in person, by phone & email. Vendors awaiting payment normally contact us by phone.	AHTD facilities, 4th floor	no telephones equipped for the hearing impaired and no handicapped restrooms on the 4th floor

SURVEY RESPONSES

	PROGRAMS/ACTIVITIES PROVIDED	GOVERNING POLICIES	CONTACT WITH PUBLIC?	WHERE?	POSSIBLE BARRIERS
DIVISION/ DISTRICT					
Highway Police	enforcement of the state's size and weight laws to include os/ow permit issuance and the motor carrier safety regs. And also enforces state traffic & criminal laws	State laws, federal regs., AHC minute orders, permit manual & AHP operations manual	enforcement contacts permit issuance, new entrant audits & compliance reviews of motor carriers, educational presentations & responding to law/regulation questions from public	weigh stations, AHP Central Office & Permit Section, Majority of public contact occurs roadside	AHP Central Office, Permit Section, Riverside & Bridgeport Weigh Stations have disability access and restrooms. Remaining stations are not accessible and do not have public restrooms...
Human Resources	EEO compliance, Personnel issues, Training & Safety Section, Building Mgmt., Ground Maintenance, Mail & Supply, Records Mgmt.	Federal & State laws on DBE, ADA, FOi, Safety, CDL...	personal, phone, email, fax & meetings	Central Office conference & meeting rooms, District & RE offices, Area Maintenance HQ	no visual or hearing communication devices onsite (also may have limited access for individuals with mobile devices)
Internal Audit	internal audits & motor fuel tax audits	Dept. laws, regs & policies & state & fed. Laws & regs.	motor fuel tax audits involve contact with public (phone, email letter & onsite)	taxpayer's place of business	no known barriers

SURVEY RESPONSES

DIVISION/ DISTRICT	PROGRAMS/ ACTIVITIES PROVIDED	GOVERNING POLICIES	CONTACT WITH PUBLIC?	WHERE?	POSSIBLE BARRIERS
Legal Division	litigation, motor carrier intrastate authority & waivers for impaired drivers	All state, federal laws & regs & Department policies & orders	daily for motor carrier section, and regular for litigation area (personal, phone, email, fax and written communication)	onsite in legal division, in court, other ...	no known barriers
Materials Division	provide support service to AHTD to assure the use of quality materials for design, construction & maintenance of transportation system	AASHTO, State & Fed. Specs & regs for Highway Construction	limited contact with public except for geotechnical field operation which has to interact with public in their field operations	central laboratory, department projects, contractor's facilities & private	no visual or hearing impaired devices
Programs & Contracts	advertisements for bid lettings, prequalification of potential prime contractors, sale & distribution of plans & proposals for advertised projects, sale & distribution of SSHC Standard Drawings and other manuals, maintenance of contractor information page on website and conducting hwy commn bid openings.	Title 23 & 49 USC, state laws on hwy contract lettings, policies & procedures as directed by the AHC	orders for plans, proposals ... are taken by mail, email, phone, fax & in person	AHTD Central offices, 2nd floor, 5th floor, other state or local agencies as well	lack of communication devices for hearing and visually impaired
Right of Way	acquisition & mgmt of property for the construction and maintenance of roads and other transportation facilities ...	Uniform Relocation Asst & Real Property Acquisition Pokies Act of 1970, CFR, Utility Relocations, Adjustments & Rembursement, AHTD Utility Accomodation Policy & AHTD ROW Div. Policy & Procedures M,m,rnl	public involvement meetings, public hearings, personal contact, mail, email, phone, utility relocations & adjustments ...	property owners' homes, business or wherever is convenient	no known barriers
Roadway Design	design & preparation of plans for all projects to construct or reconstruct roadways on the Ark. State Hwy System.	Applicable Design Specs, Guidelines & Regs, AHTD polices & guidelines & FHWA manuals	personal contact either in homes, offices, local government offices or central office (phone calls, letters, emails, public meetings)	central office, private homes, other offices	lack of communication devices for hearing and visually impaired

SURVEY RESPONSES

	PROGRAMS/ACTIVITIES PROVIDED	GOVERNING POLICIES	CONTACT WITH PUBLIC?	WHERE?	POSSIBLE BARRIERS
DIVISION/ DISTRICT					
District 4	responsible for oversight of highway related matters within their geographic region	Federal, State & local laws, rules, ordinances & AHC policies & orders	yes at rest areas, welcome centers, private residences, businesses and roadside	rest areas, welcome centers, private residences, businesses and roadside	lack of ADA complaint picnic table
District 5	adopt-a-hwy, adopt-a-spot, wildflower pits, purchasing, selling salvage materials, ...	Federal, State & local laws, rules, ordinances & AHC policies & orders	personal contact, email, phone	DE/RE offices or in the field, area HQ & Rest Area/Welcome Centers	removal of some physical barriers for public access to all offices was completed several years ago. However, visually impaired barriers may have not been fully addressed. These offices do not have communication devices to aid the hearing impaired.

SURVEY RESPONSES

	PROGRAMS/ACTIVITIES PROVIDED	GOVERNING POLICIES	CONTACT WITH PUBLIC?	WHERE?	POSSIBLE BARRIERS
DIVISION/ DISTRICT					
State Aid	administers the State Aid County Road Program ...	AHTD Peronnel Manual, Ark. Code, AASHTO policies ...	onsite visits to project locations to meet with County Judges and local AHTD personnel, occasional meetings with property owners	job sites, 9th Floor	no restroom for disabled persons on 9th floor (a sign directs people to 1st or 6th floor)
Surveys	locate, collect & process tech. Survey data has related to engineering design and land acquisition in an efficient & productive manner & supply that info to our customers	Requirements & Procedures for Design Surveys and Land Surveys, Ark Standards of Practice for Property Boundary Surveys and Plats.	in person, by phone, email, web access ...	Surveys division, District HQ & Maintenance Facilities, private homes, motels, restaurants, AHTD ROW	Surveys no known physical barriers, access to photo sales room in Photogrammetry is not ADA compliant, language barriers
District 1	administration of programs, activities and services that are originated by a Div. Or Administrator in the Central Office	Contract, Plans & Specs for each job, NBIS, various manuals, ...	regular contact with public with questions or comments about programs, activities & services, ...	DE/RE offices or in the field, area HQ & Rest Area/Welcome Centers	lack of wheelchair accommodations at some RE offices and some Area HQ offices, communication barriers
District 2	said use District 1 answers because theirs are the same				
District 3	same as District 1				

SURVEY RESPONSES

DIVISION/ DISTRICT	PROGRAMS/ACTIVITIES PROVIDED	GOVERNING POLICIES	CONTACT WITH PUBLIC?	WHERE?	POSSIBLE BARRIERS
District 6	build hwy & intersections, maintain hways intersections & certain public facilities, adopt-a-hwy program, inmate litter control, issue permits for improvements to cities and organizations	Title II ADA	In person, by phone & email	public facilities, AHTD facilities, rest areas, tourist information centers, churches, schools	lack of communication devices for hearing and visually impaired
District 7	supervision of construction and maintenance activities on state highways	AHTD policies and rules & regs., Standard specs for Hwy Construction, Supp. Spec., Special Provisions and Contract law	personal contact, email, letters, phone	project job sites or in District offices	District offices are compliant but some RE offices may not be
District 8	maintain hways & bridges, rest areas, district office within district, provide info on road conditions, administer construction projects & mowing contracts...	All state, federal laws & regs & Department policies & orders	personal contact, email, letters, phone	project job sites or in District offices	restrooms at area HQ and RE offices are not ADA compliant and area HQ & RE offices are not in strict compliance with ADA, no devices for visual or hearing impaired

SURVEY RESPONSES

	PROGRAMS/ACTIVITIES PROVIDED	GOVERNING POLICIES	CONTACT WITH PUBLIC?	WHERE?	POSSIBLE BARRIERS
DIVISION/ DISTRICT					
District 9	maintain hwys & bridges, rest areas, district office within district, provide info on road conditions, administer construction projects & mowing contracts...	All state, federal laws & regs & Department policies & orders	personal contact, email, letters, phone	project job sites or in District offices	Carroll County area HQ and the Peel Ferry HQ are the only area HQ in this district that are ADA complaint, all RE offices in this district are not ADA accessible
District 10	maintain hwys & bridges, rest areas, district office within district, provide info on road conditions, administer construction projects & mowing contracts...	All state, federal laws & regs & Department policies & orders	personal contact, email, letters, phone	District Office, RE office, field, area HQ & rest areas/ welcome centers	lack of wheel chair accommodations at some RE offices & some area HQ Communication barriers include not having any communication devices for the hearing or visually impaired

CENTRAL OFFICE COMPLEX SELF EVALUATION OF ADA COMPLIANCE REQUIREMENTS 2011

BASEMENT

CAFETERIA:

- Need four (4) ADA slots (27" clear A.F.F., 19" deep, 28-34" table height) Have none. Existing 28" clear above finished floor (A.F.F.), 16.5" deep, 30" table height, 63 chairs, 5% ADA compliant = 4 positions.
- Food service line tray slides to be 34" max A.F.F. Existing is 35-35.5" A.F.F.

1st FLOOR:

- Presently ADA compliant.

2nd FLOOR:

- Presently ADA compliant.

3rd FLOOR:

- Need lever/handles on door latches into secretary and conference rooms.
- Need 18" (min) clear, interior latch side of secretary door. Electric and telephone outlets in the way on floor.

4th FLOOR:

- Room 405 needs lever handle.
- Room 405 needs 18" (min) clear inside door- latch side.
- Need lever latch into office.

5th FLOOR:

- Needs lever handle- Room 501.
- Needs 18"(min) clear inside door Room 501, latch side. Existing is 12".
- Need 36" clear between 1st desk and forms rack. Existing is 33", but rack is portable.

6th FLOOR:

- Men's restroom door needs reversed swing.
- Door to Room 602 to be lever handle.
- Need 18" (min) clear inside latch.

7th FLOOR:

- Door hallway into Room 703 needs lever handle.
- Conference table needs 9" clear under table, max on end is 16".

CENTRAL OFFICE COMPLEX SELF EVALUATION OF ADA COMPLIANCE REQUIREMENTS 2011

8th FLOOR:

- Room 802 and 804 need lever latches.
- Conference room and break rooms need lever handles.
- Break room table needs 19" clear under, end is 16".
- Conference room table is 25.5" A.F.F. clear, needs 27" A.F.F. clear.

9th FLOOR:

- Need lever handles on door locks hallway into Room 907 and conference room.
- Conference room table needs 19" clear under, end is 16".

10th FLOOR:

- Need lever handle- conference room to hallway door.
- Need 18" (min) latch-side inside clearance door to hallway from conference room. Existing is 13" (chair).

PLANNING BUILDING

- Needs lever latches into Room 100 and conference room.
- Conference table needs 19" clear under, existing is 14.5".
- Conference room bookshelf leaves 13.5" clear at interior latch side of conference room door; needs 18" (min).
- Desk leaves 8" clear at interior latch side Room 100; needs 18" (min); desk to be moved.
- Men's restroom door has no interior door latch side clearance. Possibly move door and door jamb to -3' off aisle to interior end of janitor's closet wall.

ANNEX

- Presently ADA compliant

**DISTRICT HEADQUARTERS
SELFEVALUATION OF
ADA COMPLIANCE REQUIREMENTS
2011**

DISTRICT 1 :

- Presently ADA compliant.

DISTRICT 2:

- Presently ADA compliant.

DISTRICT 3:

- Front doors are double 30" storefront, need 36" door with 12" sidelights on each side or modify to 2-36" doors; 8 # pull closer.

DISTRICT 4:

- New District Headquarters under construction.

DISTRICT 5:

- Presently ADA compliant.

DISTRICT 6:

- Presently ADA compliant.

DISTRICT 7:

- Presently ADA compliant.

DISTRICT 8:

- Presently ADA compliant.

DISTRICT 9:

- Presently ADA compliant.

DISTRICT 10:

- Presently ADA compliant.

**MAINTENANCE
SELF EVALUATION OF
ADA COMPLIANCE REQUIREMENTS
2011**

- Drinking fountain spout 42" A.F.F. Max to be 36". Side access dimensions OK.
- Urinals in shop restroom have 22" lips. Need one urinal lowered to 17" max A.F.F.
- Conference room needs lever latch handle.
- Conference room table needs 19" clear; 27" A.F.F. Existing is 3.375" clear.

**WELCOME CENTER & REST AREA
SELF EVALUATION OF
ADA COMPLIANCE REQUIREMENTS
2011**

DISTRICT 1

FORREST CITY REST AREA (EB):

- Restroom signage needs to conform to ADA approved standards (signs must be affixed to wall next to latch or lock of door).
- Handicap accessibility parking spaces need repainting.
- International Symbol of Accessibility logos need repainting.
- One ADA approved picnic table is required.

FORREST CITY REST AREA (WB):

- Door closers need to be readjusted.
- Flush valves (toilets) need to be readjusted.
- Restroom signage needs to conform to ADA approved standards (signs must be affixed to wall next to latch or lock of door).
- Handicap accessibility parking spaces need repainting.
- International Symbol of Accessibility logos need repainting.
- One ADA approved picnic table is required.

WEST MEMPHIS WELCOME CENTER:

- Flush valves (toilets) need to be readjusted.
- Mirror needs to conform to ADA specified height (40").
- Restroom signage needs to conform to ADA approved standards (signs must be affixed to wall next to latch or lock of door).
- Handicap accessibility parking spaces need repainting.
- International Symbol of Accessibility logos need repainting.
- One ADA approved picnic table is required.

HELENA WELCOME CENTER:

- Mirror needs to conform to ADA specified height (40").
- Restroom signage needs to conform to ADA approved standards (signs must be affixed to wall next to latch or lock of door).
- One ADA approved picnic table is required.

DISTRICT 2

DERMOTT REST AREA:

- Flush valves (toilets) need to be readjusted.
- Restroom signage needs to conform to ADA approved standards (signs must be affixed to wall next to latch or lock of door).
- International Symbol of Accessibility logos need repainting.
- Van assessable sign is needed (east parking lot).
- One ADA approved picnic table is required.
- Need men's and women 's outside doors and frames swapped to obtain 18" (min.) clear at interior lock side of doors.

LAKE VILLAGE WELCOME CENTER:

- Welcome Center is presently ADA compliant.

WELCOME CENTER & REST AREA SELF EVALUATION OF ADA COMPLIANCE REQUIREMENTS 2011

DISTRICT 3

GLENWOOD REST AREA:

- Flush valves (toilets) need to be readjusted.
- Handicap accessibility parking spaces need repainting.
- International Symbol of Accessibility logos need repainting.
- One ADA approved picnic table is required.

RED RIVER WELCOME CENTER:

- Flush valves (toilets) need to be readjusted.
- Restroom signage needs to conform to ADA approved standards (signs must be affixed to wall next to latch or lock of door).
- Handicap accessibility parking spaces need repainting.
- International Symbol of Accessibility logos need repainting.
- One ADA approved picnic table is required.

TEXARKANA WELCOME CENTER:

- Welcome Center is presently ADA compliant.

DISTRICT 4

OZARK REST AREA (EB):

- Handicap accessibility parking spaces need repainting.
- International Symbol of Accessibility logos need repainting.
- One ADA approved picnic table is required.

OZARK REST AREA (WB):

- Handicap accessibility parking spaces need repainting.
- International Symbol of Accessibility logos need repainting.
- One ADA approved picnic table is required.

WALDRON REST AREA:

- Handicap accessibility parking spaces need repainting.
- International Symbol of Accessibility logos need repainting.
- One ADA approved picnic table is required.

VAN BUREN WELCOME CENTER:

- Welcome Center is presently ADA compliant.

DISTRICT 5

SALADO CREEK REST AREA:

- Mirrors need to conform to ADA specified heights (40").
- Restroom signage needs to conform to ADA approved standards (signs must be affixed to wall next to latch or lock of door).
- Handicap accessibility parking spaces need repainting.

**WELCOME CENTER & REST AREA
SELF EVALUATION OF
ADA COMPLIANCE REQUIREMENTS
2011**

DISTRICT 6

SOCIAL HILL REST AREA:

- Flush valves (toilets) need to be readjusted.
- Operational valves (lavatories) need to be readjusted.
- Handicap accessibility parking spaces need repainting.
- International Symbol of Accessibility logos need repainting.
- One ADA approved picnic table is required.

LONSDALE REST AREA:

- Flush valves (toilets) need to be readjusted.
- Operational valves (lavatories) need to be readjusted.
- Handicap accessibility parking spaces need repainting.
- One ADA approved picnic table is required.
- Concrete walks are a trip hazard in places.

WHITE RJVER REST AREA (EB):

- Flush valves (toilets) need to be readjusted.
- Mirrors need to conform to ADA specified heights (40").
- Restroom signage needs to conform to ADA approved standards (signs must be affixed to wall next to latch or lock of door).
- International Symbol of Accessibility logos need repainting.
- One ADA approved picnic table is required.
- Concrete walks are a trip hazard in places.

WHITE RJVER REST AREA (WB):

- Flush valves (toilets) need to be readjusted.
- Mirrors need to conform to ADA specified heights (40").
- Restroom signage needs to conform to ADA approved standards (signs must be affixed to wall next to latch or lock of door).
- International Symbol of Accessibility logos need repainting.
- One ADA approved picnic table is required.
- Concrete walks are a trip hazard in places.

DISTRICT 7

GURDON REST AREA (EB):

- Mirrors need to conform to ADA specified heights (40").
- Restrooms need door closers.
- One ADA approved picnic table is required.

GURDON REST AREA (WB):

- Restrooms need door closers.
- Handicap accessibility parking spaces need repainting.
- International Symbol of Accessibility logos need repainting.
- One ADA approved picnic table is required.

**WELCOME CENTER & REST AREA
SELF EVALUATION OF
ADA COMPLIANCE REQUIREMENTS
2011**

BUENA VISTA REST AREA:

- Flush valves (toilets) need to be readjusted.
- Handicap stall (women's) lacks handicap grab bars.
- Restroom signage needs to conform to ADA approved standards (signs must be affixed to wall next to latch or lock of door).
- Handicap accessibility parking spaces need repainting.
- International Symbol of Accessibility logos need repainting.
- One ADA approved picnic table is required.
- Concrete walks are a trip hazard in places.

RISON REST AREA:

- Door closers need to be readjusted.
- Restroom signage needs to conform to ADA approved standards (signs must be affixed to wall next to latch or lock of door).
- Handicap accessibility parking spaces need repainting.
- International Symbol of Accessibility logos need repainting.
- One ADA approved picnic table is required.
- Need men's and women's outside doors and frames swapped to obtain 18"(min.) clear at interior lock side of doors.
- Need to remove 4" block urinal screens for handicapped access to urinals. Install new baked enamel screens and retile. Need 30" (min.) clear.

ELDORADO WELCOME CENTER:

- Welcome Center is presently ADA compliant.

DISTRICT 8

BIG PINEY REST AREA (EB):

- Flush valves (toilets) need to be readjusted.
- Handicap accessibility parking spaces need repainting.

BIG PINEY REST AREA (WB):

- Flush valves (toilets) need to be readjusted.
- Handicap accessibility parking spaces need repainting.

DISTRICT 9

HARRISON WELCOME CENTER:

- Flush valves (toilets) need to be readjusted.
- One ADA approved picnic table is required.

BELLA VISTA WELCOME CENTER:

- Flush valves (toilets) need to be readjusted.
- Handicap accessibility parking spaces need repainting.
- International Symbol of Accessibility logos need repainting.
- One ADA approved picnic table is required.

**WELCOME CENTER & REST AREA
SELFEVALUATION OF
ADA COMPLIANCE REQUIREMENTS
2011**

SILOAM SPRINGS WELCOME CENTER:

- Restroom signage needs to conform to ADA approved standards (signs must be affixed to wall next to latch or lock of door).
- One ADA approved picnic table is required.

DISTRICT 10

IMBODEN/BLACKROCK REST AREA:

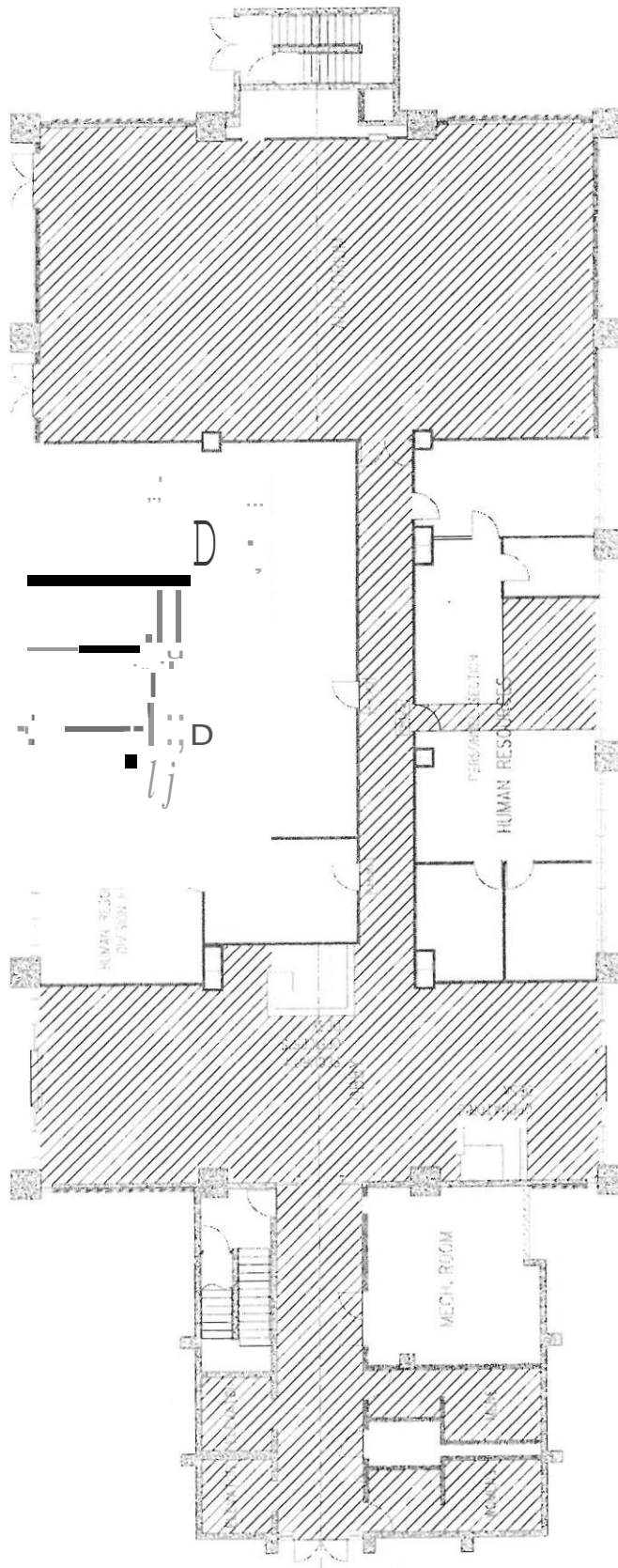
- Restroom signage needs to conform to ADA approved standards (signs must be affixed to wall next to latch or lock of door).
- Handicap accessibility parking spaces need repainting.
- One ADA approved picnic table is required.

CORNING WELCOME CENTER:

- Welcome Center is presently ADA compliant.

BLYTHEVILLE WELCOME CENTER:

- Welcome Center is presently ADA compliant.



CENTRAL O
IFIRS

10/1/12

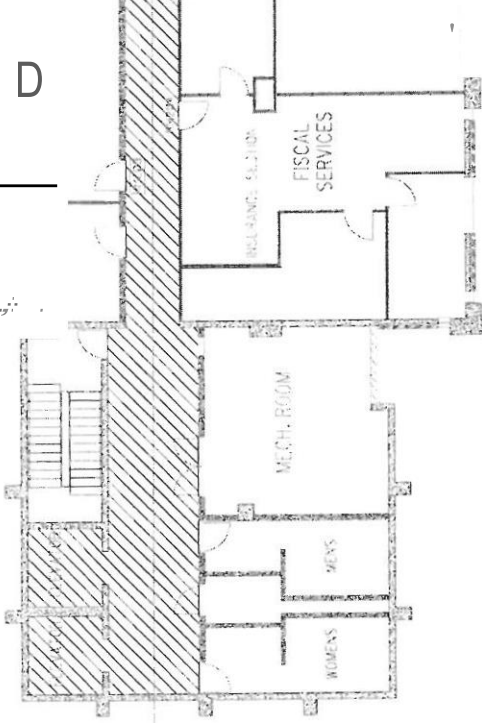
10/1/12

F-2

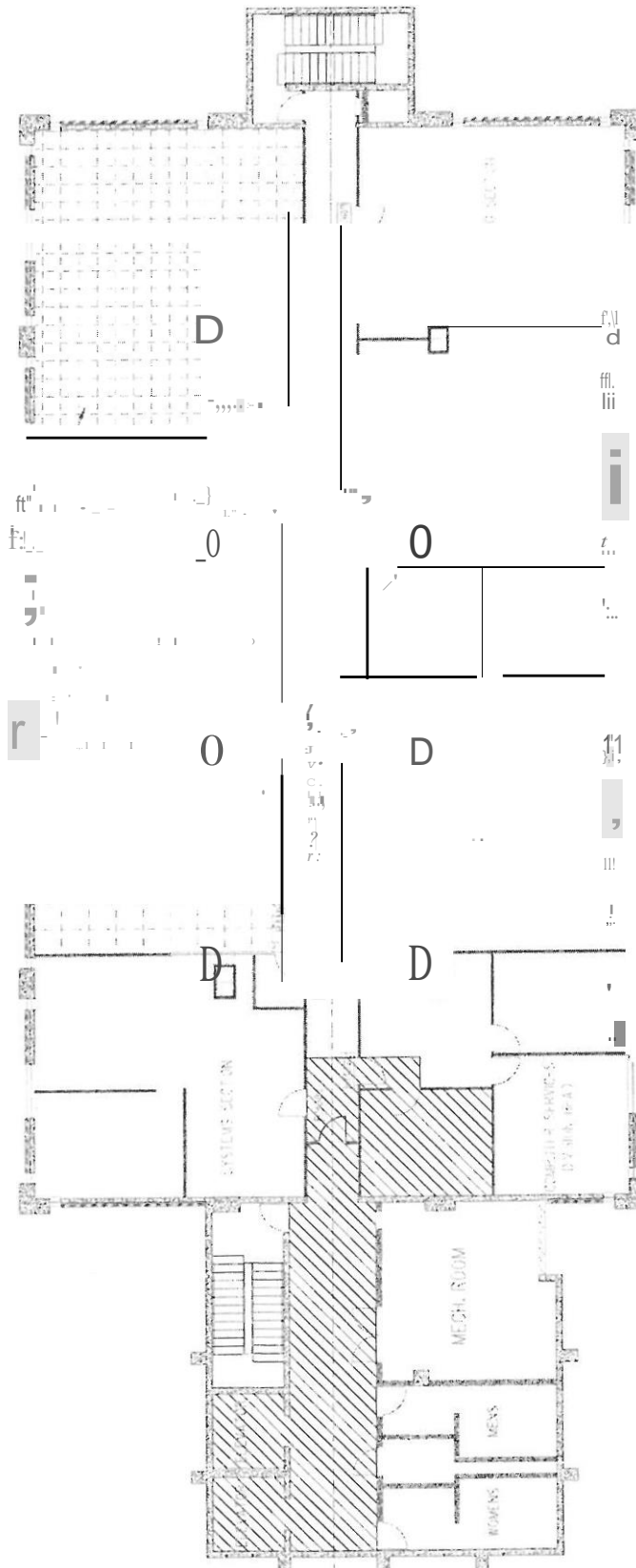
10/1/12

1" = 10'-0"

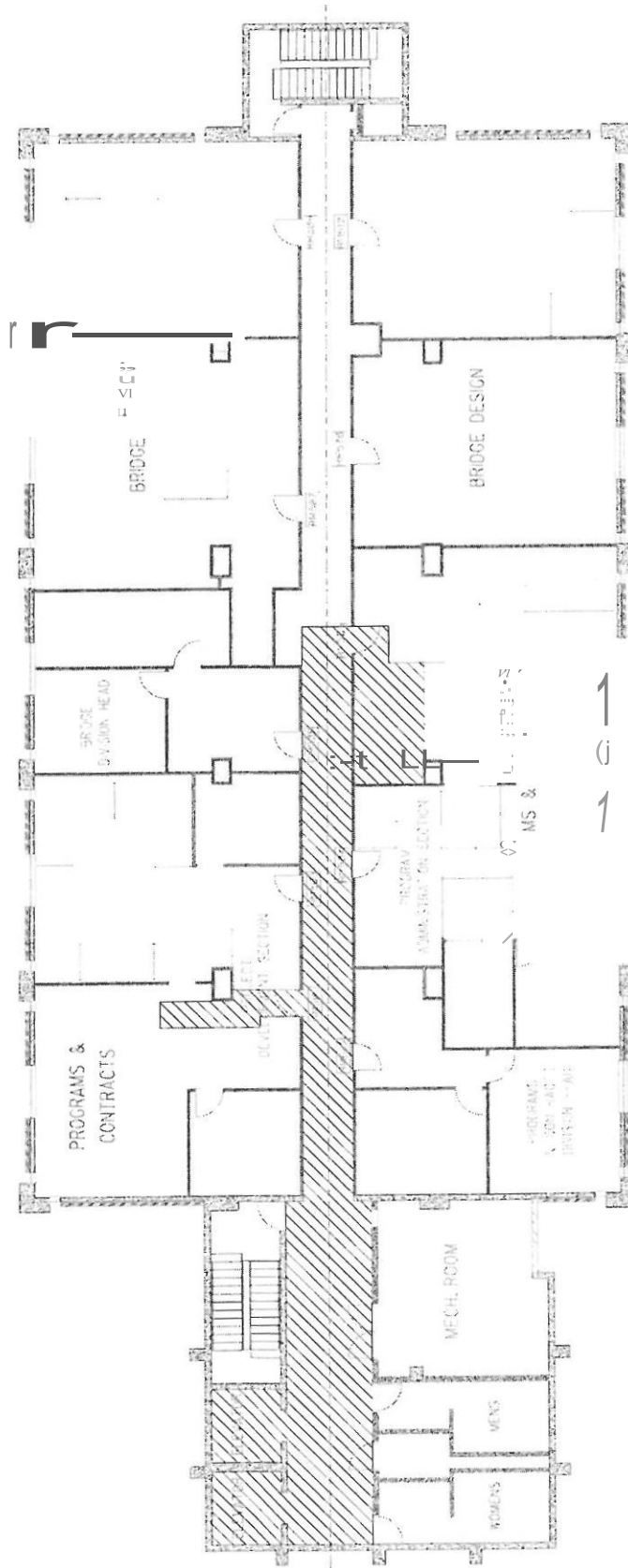
D



SECTION THROUGH BUILDING

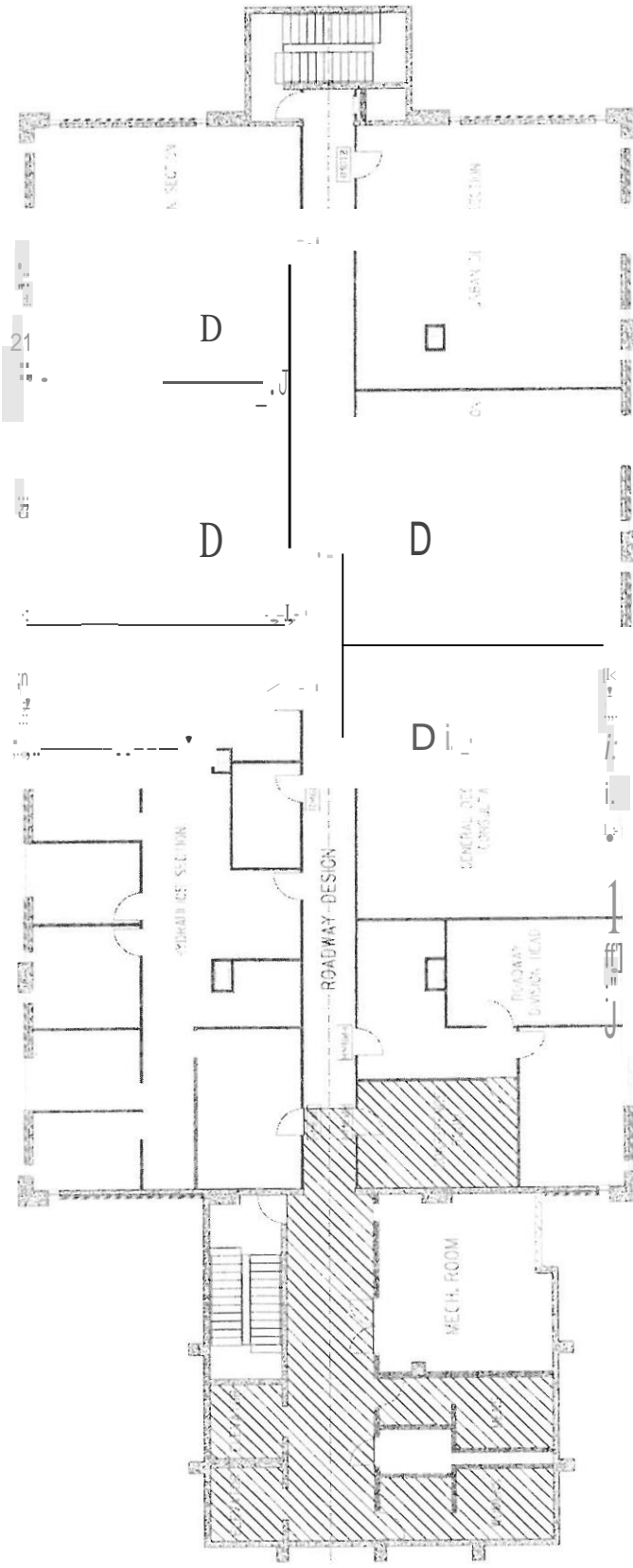


[illegible]

[illegible][illegible][illegible]

Weyburn & Pritchard

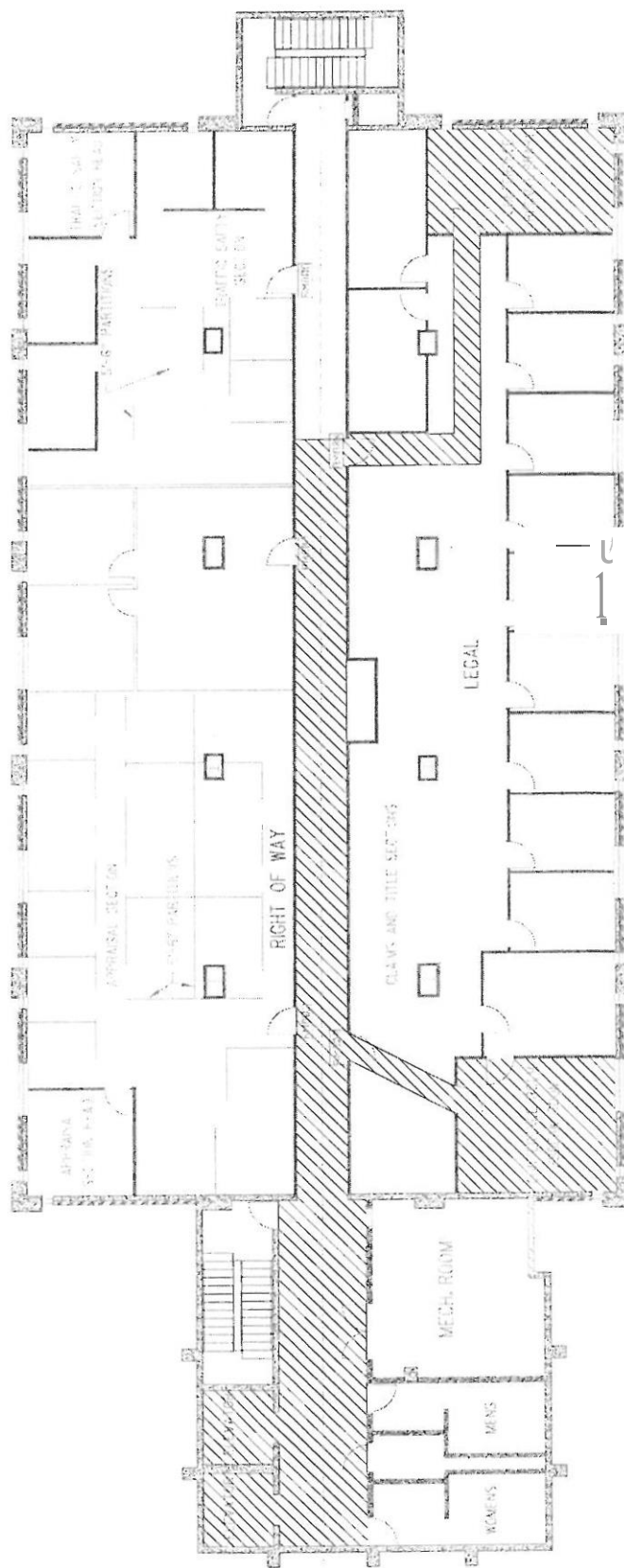
1	2	3	4	5	6	7	8	9	10	11	12	13	14	15	16	17	18	19	20	21	22	23	24	25	26	27	28	29	30	31	32	33	34	35	36	37	38	39	40	41	42	43	44	45	46	47	48	49	50	51	52	53	54	55	56	57	58	59	60	61	62	63	64	65	66	67	68	69	70	71	72	73	74	75	76	77	78	79	80	81	82	83	84	85	86	87	88	89	90	91	92	93	94	95	96	97	98	99	100
---	---	---	---	---	---	---	---	---	----	----	----	----	----	----	----	----	----	----	----	----	----	----	----	----	----	----	----	----	----	----	----	----	----	----	----	----	----	----	----	----	----	----	----	----	----	----	----	----	----	----	----	----	----	----	----	----	----	----	----	----	----	----	----	----	----	----	----	----	----	----	----	----	----	----	----	----	----	----	----	----	----	----	----	----	----	----	----	----	----	----	----	----	----	----	----	----	----	----	-----



ALL RIGHTS RESERVED BY THE ARCHITECT

CENTRAL OF
6 SIXT

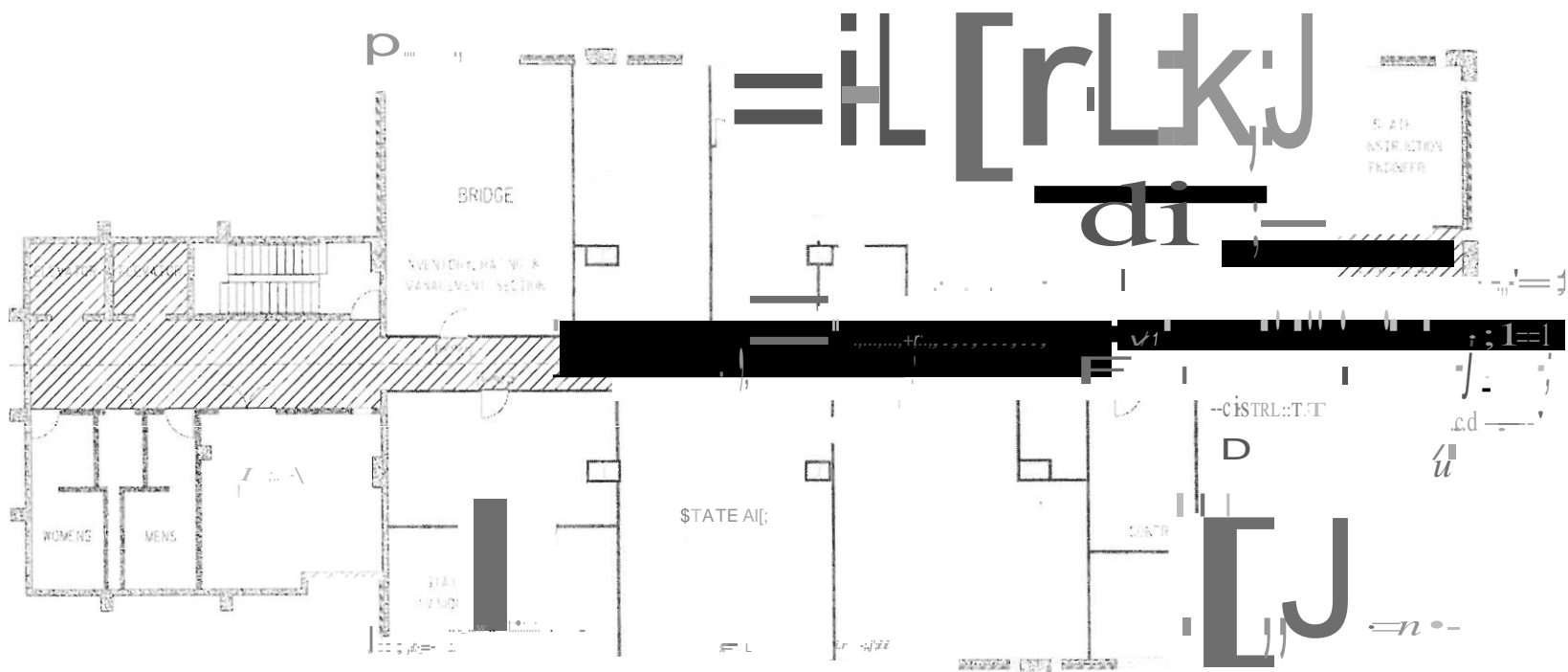
1	2	3	4	5	6	7	8	9	10	11	12	13	14	15	16	17	18	19	20	21	22	23	24	25	26	27	28	29	30	31	32	33	34	35	36	37	38	39	40	41	42	43	44	45	46	47	48	49	50	51	52	53	54	55	56	57	58	59	60	61	62	63	64	65	66	67	68	69	70	71	72	73	74	75	76	77	78	79	80	81	82	83	84	85	86	87	88	89	90	91	92	93	94	95	96	97	98	99	100
---	---	---	---	---	---	---	---	---	----	----	----	----	----	----	----	----	----	----	----	----	----	----	----	----	----	----	----	----	----	----	----	----	----	----	----	----	----	----	----	----	----	----	----	----	----	----	----	----	----	----	----	----	----	----	----	----	----	----	----	----	----	----	----	----	----	----	----	----	----	----	----	----	----	----	----	----	----	----	----	----	----	----	----	----	----	----	----	----	----	----	----	----	----	----	----	----	----	----	-----

[illegible]

$\frac{1}{7}$,
 t ,
 r ,
a.,
ex.,
J,

CENTRAL OFFICE BUILDING		F-9
EIGHTH FLOOR REVISED		
U.S. G.P.O.	700-86	
FOR INFORMATION OF THE PUBLIC		
U.S. GOVERNMENT PRINTING OFFICE		
WASHINGTON, D.C.		

DATE	TIME	BY	REMARKS	INITIALS	DATE



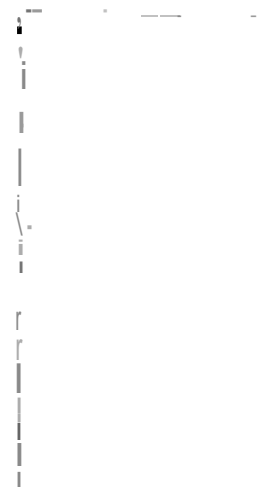
S:s3 Tmm AREAS J"l:FY PJ9LIC ACCESS.8,LITY

CENTRAL OFFICE BUILDING	
9 NINTH FLOOR	
1111 CHICAGO, ILLINOIS	
PLANNING & DESIGN	DATE
BY: [redacted]	DATE: [redacted]
CHIEF ARCHITECT	DATE: [redacted]
F-10	

11/11/11 11:11 AM

1	2	3	4	5	6	7	8	9	10	11	12	13	14	15	16	17	18	19	20	21	22	23	24	25	26	27	28	29	30	31	32	33	34	35	36	37	38	39	40	41	42	43	44	45	46	47	48	49	50	51	52	53	54	55	56	57	58	59	60	61	62	63	64	65	66	67	68	69	70	71	72	73	74	75	76	77	78	79	80	81	82	83	84	85	86	87	88	89	90	91	92	93	94	95	96	97	98	99	100
---	---	---	---	---	---	---	---	---	----	----	----	----	----	----	----	----	----	----	----	----	----	----	----	----	----	----	----	----	----	----	----	----	----	----	----	----	----	----	----	----	----	----	----	----	----	----	----	----	----	----	----	----	----	----	----	----	----	----	----	----	----	----	----	----	----	----	----	----	----	----	----	----	----	----	----	----	----	----	----	----	----	----	----	----	----	----	----	----	----	----	----	----	----	----	----	----	----	----	-----

11



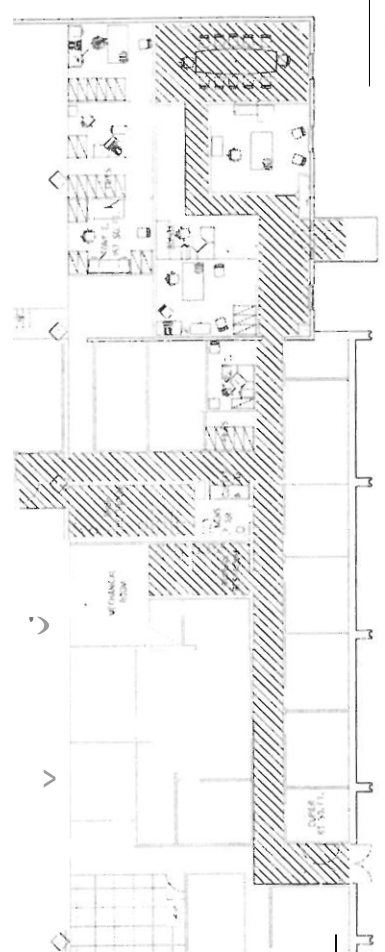
>

<

O

v

>



>

<

<

/

>

FLOOR PLAN
K12

MAINTENANCE
CENTRAL S

0-t

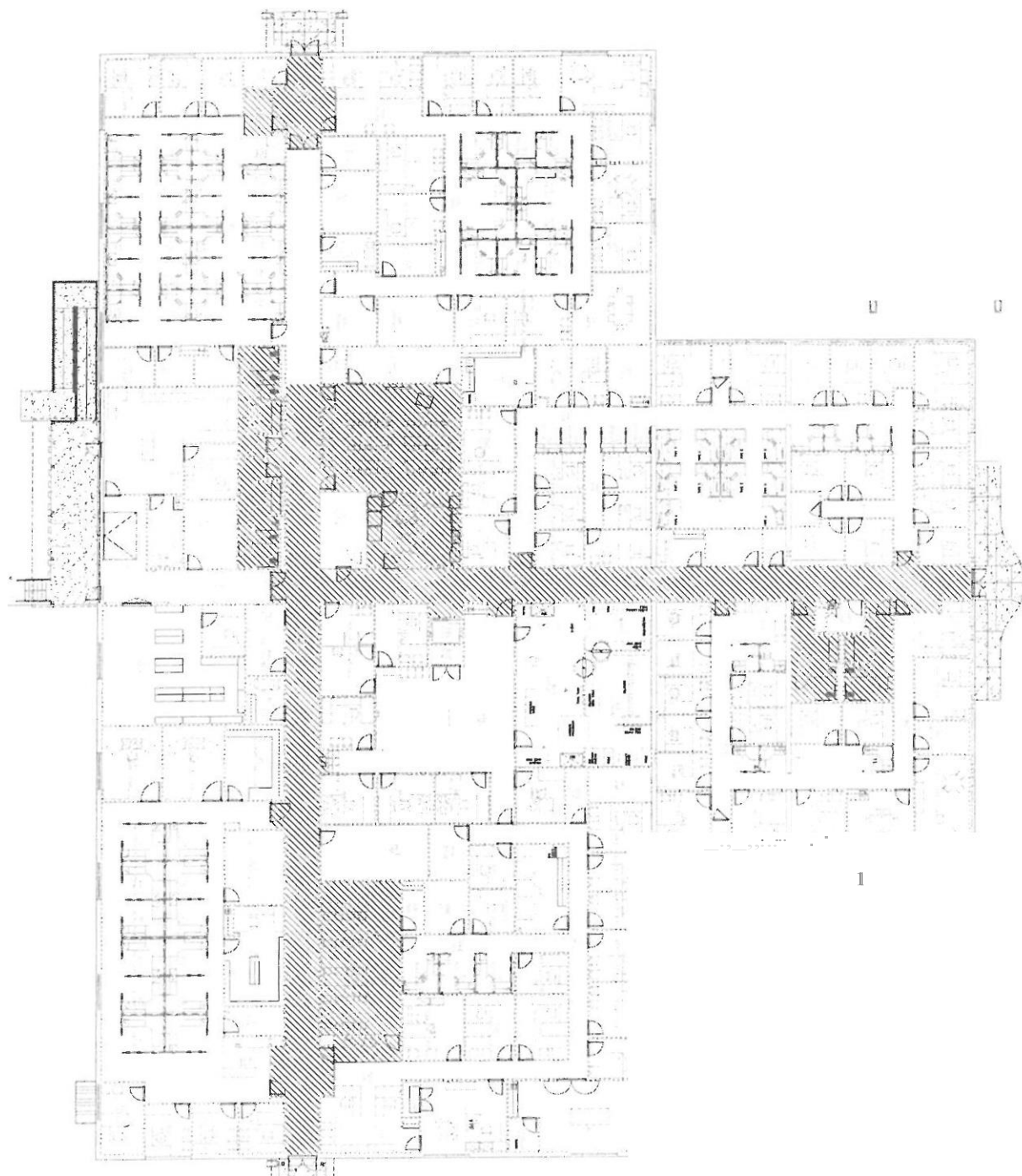
g

MATERIALS LABORATORY
SELF EVALUATION OF
ADA COMPLIANCE REQUIREMENTS
2011

- Presently ADA compliant

MATERIALS LABORATORY
SELF EVALUATION OF
ADA COMPLIANCE REQUIREMENTS
2011

- Presently ADA compliant

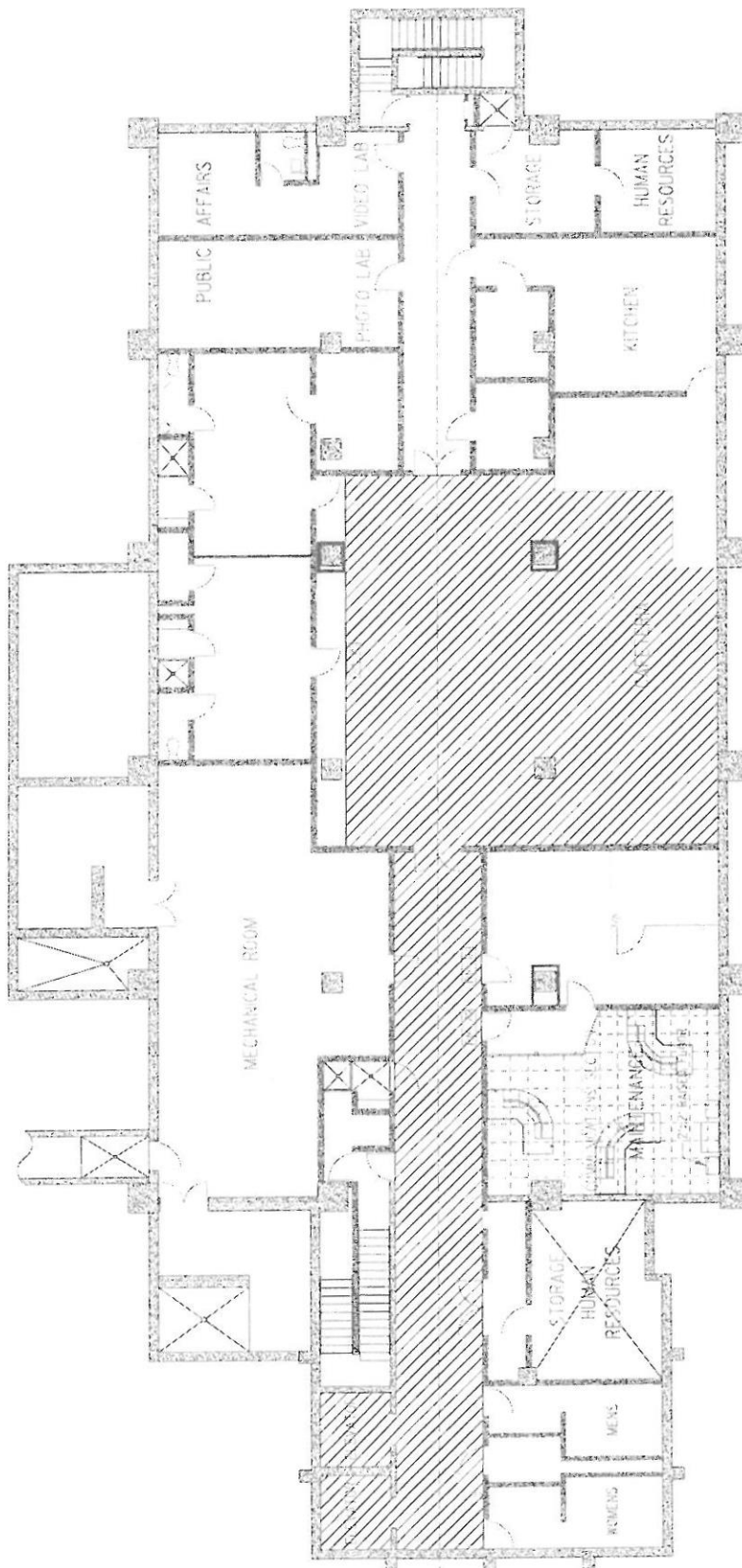


CENTRAL OFFICE ANNEX
HATCHED AREAS IDENTIFY PUBLIC ACCESSIBILITY

1

**PLANNING BUILDING
SELF EVALUATION OF
ADA COMPLIANCE REQUIREMENTS
2011**

- Needs lever latches into Room 100 and conference room.
- Conference table needs 19" clear under, existing is 14.5".
- Conference room bookshelf leaves 13.5" clear at interior latch side of conference room door; needs 18" (min).
- Desk leaves 8" clear at interior latch side Room 100; needs 18"(min); desk to be moved.
- Men's restroom door has no interior door latch side clearance. Possibly move door and doorjamb to -3' off aisle to interior end of janitor's closet wall.



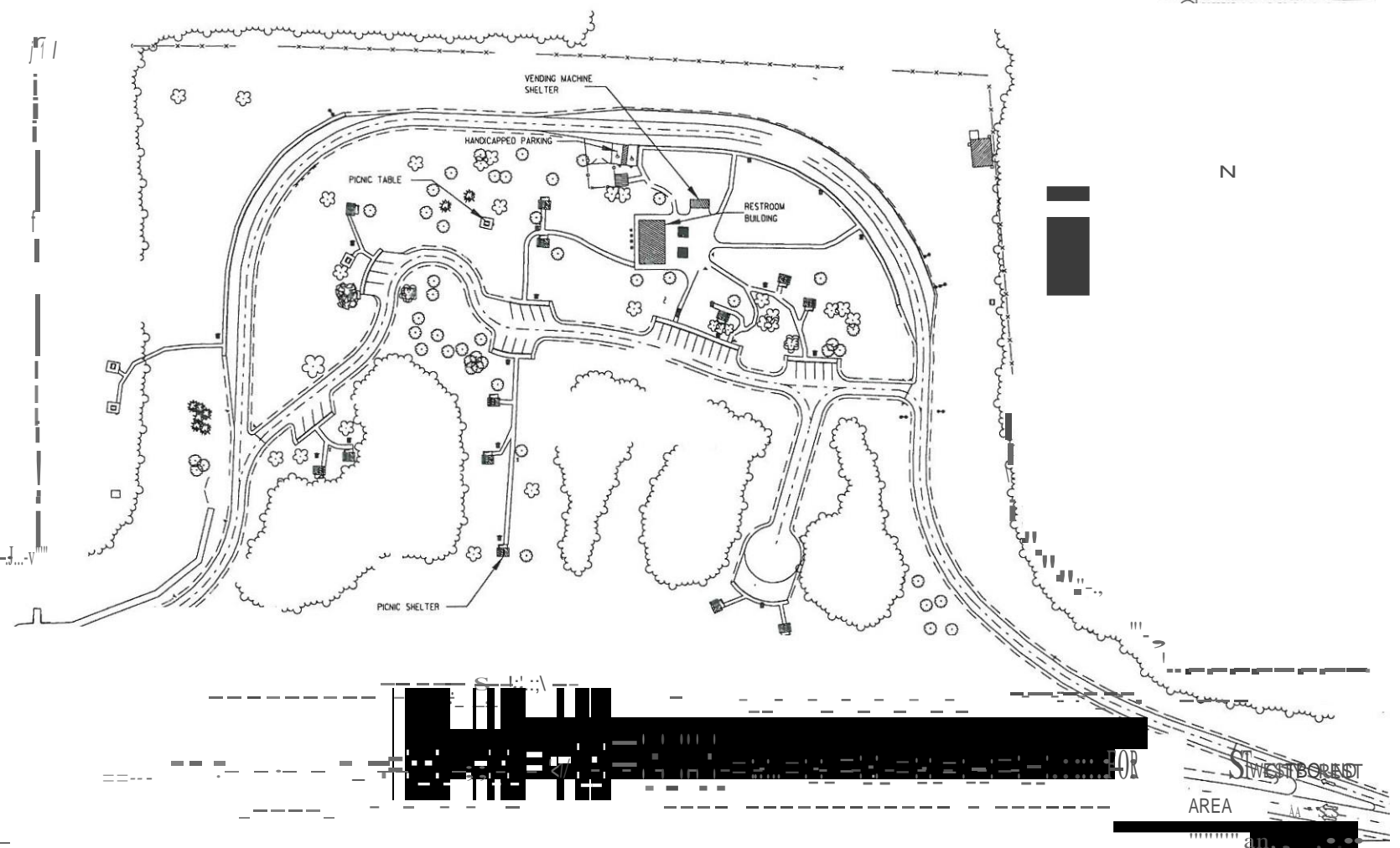

 HATCHED AREAS IDENTIFY PUBLIC ACCESSIBILITY

1
 2
 3
 4
 5
 6
 7
 8
 9
 10
 11
 12
 13
 14
 15
 16
 17
 18
 19
 20
 21
 22
 23
 24
 25
 26
 27
 28
 29
 30
 31
 32
 33
 34
 35
 36
 37
 38
 39
 40
 41
 42
 43
 44
 45
 46
 47
 48
 49
 50
 51
 52
 53
 54
 55
 56
 57
 58
 59
 60
 61
 62
 63
 64
 65
 66
 67
 68
 69
 70
 71
 72
 73
 74
 75
 76
 77
 78
 79
 80
 81
 82
 83
 84
 85
 86
 87
 88
 89
 90
 91
 92
 93
 94
 95
 96
 97
 98
 99
 100

011
11 111

111111 111
111111 111

DATE FILMED	REQ. NO. DIST. NO.	111111 111	111111 111
		6	ARK.
		JOB NO.	



HO WESTBQU)
4.0 MILES WEST OF HWY. 11
LOC. 7.21
LAT. 44° 45' 00" N
LONG. 111° 00' 23" W

ST. R. HOS C 11, (111111 111)
FORREST OF WB R (ST AREA PLOT PLAN)
GEOGRAPHIC 111111 111

P-1

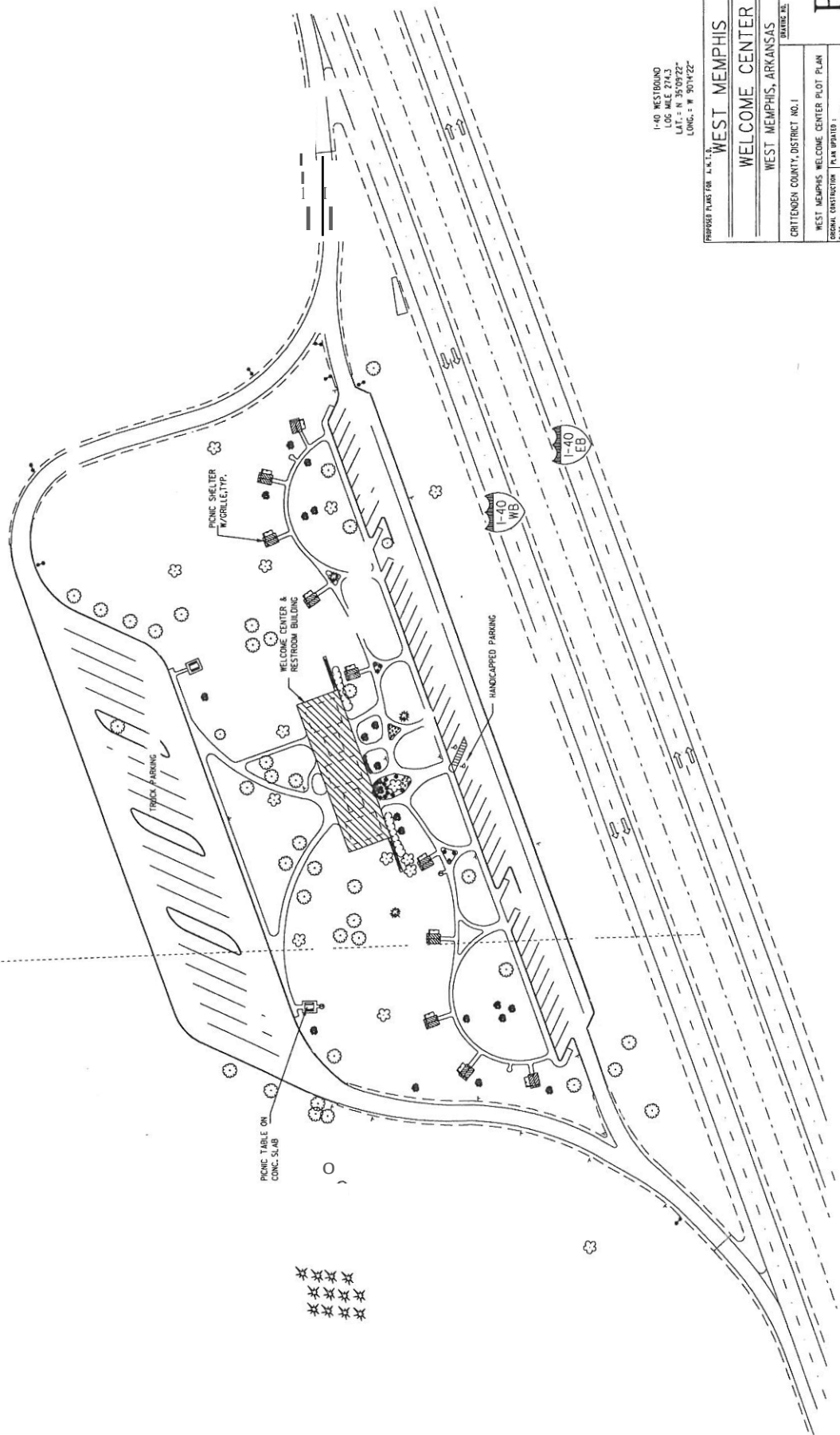
forrest140ra.dgn

00
11
11

DATE REVISED	DATE FILMED	DATE RECEIVED	DATE FILMED	FED. RES. DIST. NO.	STATE	FED. AD. PROJ. NO.	SHEET NO.	TOTAL SHEETS
				6	ARK.			
					JOB NO.			

4 WEST MEMPHIS WELCOME CENTER - PLOT PLAN

N



I-40 WESTBOUND
LOG. MILE 274.3
LAT. = N 35°09'22"
LONG. = W 90°14'22"

WEST MEMPHIS

WELCOME CENTER

WEST MEMPHIS, ARKANSAS

CRITTENDEN COUNTY, DISTRICT NO. 1

WEST MEMPHIS WELCOME CENTER PLOT PLAN

DATE: 09-25-06

P-1

www.mphs40wc.dgn

DATE REVISED	DATE FILMED	DATE REVISED	DATE FILMED	LED. RE. LISTING	STATE	FED. AID PROJ. NO.	SHEET NO.	TOTAL SHEETS
				6	ARK.			
					JOB NO.			



PLOT PLAN (16.2 ± ACRES)

N.T.S.
1-40 EASTBOUND
2.1 MILES EAST OF HWY. 261
LOC. MILE 235.5
LAT. N. 34°59'53"
LONG. - W. 90°52'08"

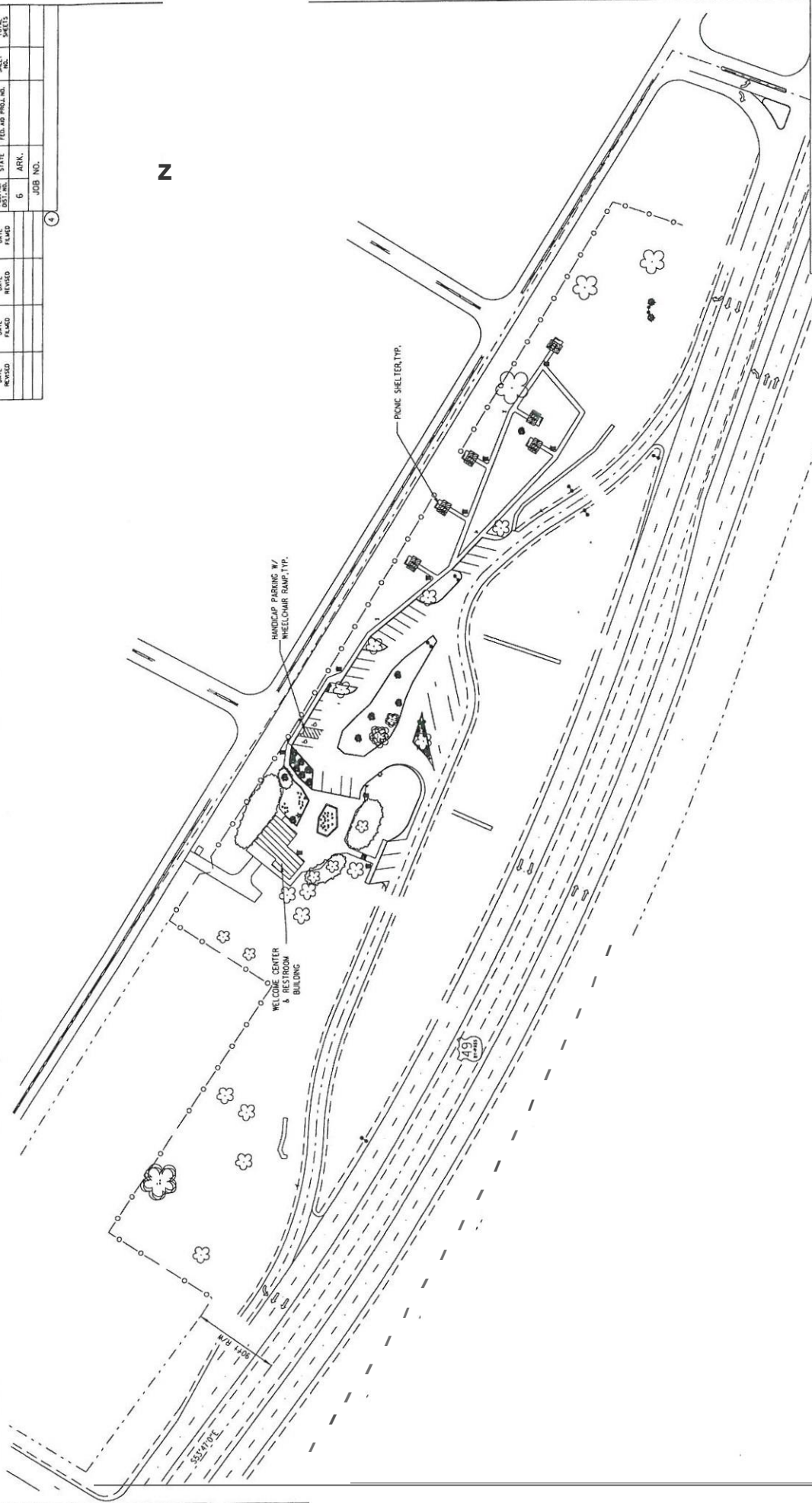
PROPOSED PLANS FOR A.H.P. NO. 1	
FORREST CITY REST	
AREA EASTBOUND	
FORREST CITY, ARKANSAS	
ST. FRANCIS COUNTY, DISTRICT NO. 1	DATE: 10-15-01
FORREST CITY EB REST AREA PLOT PLAN	PLAN NUMBER: 10-15-01
P-1	

forrestH00r.cad

DATE REVISED	DATE FILED	DATE REVISED	DATE FILED	FED. NO. DIST. NO.	STATE	FED. AC. PROJ. NO.	SHEET NO.	TOTAL SHEETS
				6	ARK.			
					JOB NO.			

4

N



HELENA

PROPOSED PLANT FOR A.N.T.S.

WELCOME CENTER

HELENA, ARKANSAS

DATE: 05-29-02

PHILIPS COUNTY, DISTRICT NO. 1

HELENA WELCOME CENTER - PLOT PLAN

ORIGINAL CONSTRUCTION

DATE: 1977

PLAN UPDATED

DATE: 05-29-02

1977

1506 MARTIN LUTHER KING DR
 HRY 49 BYPASS
 HELENA AR 72342
 PHONE 870-338-7602
 FAX 870-338-9853
 E-MAIL: WELCOME@HELENA-AR.GOV
 LONG: - W 90°37'2"

P-1

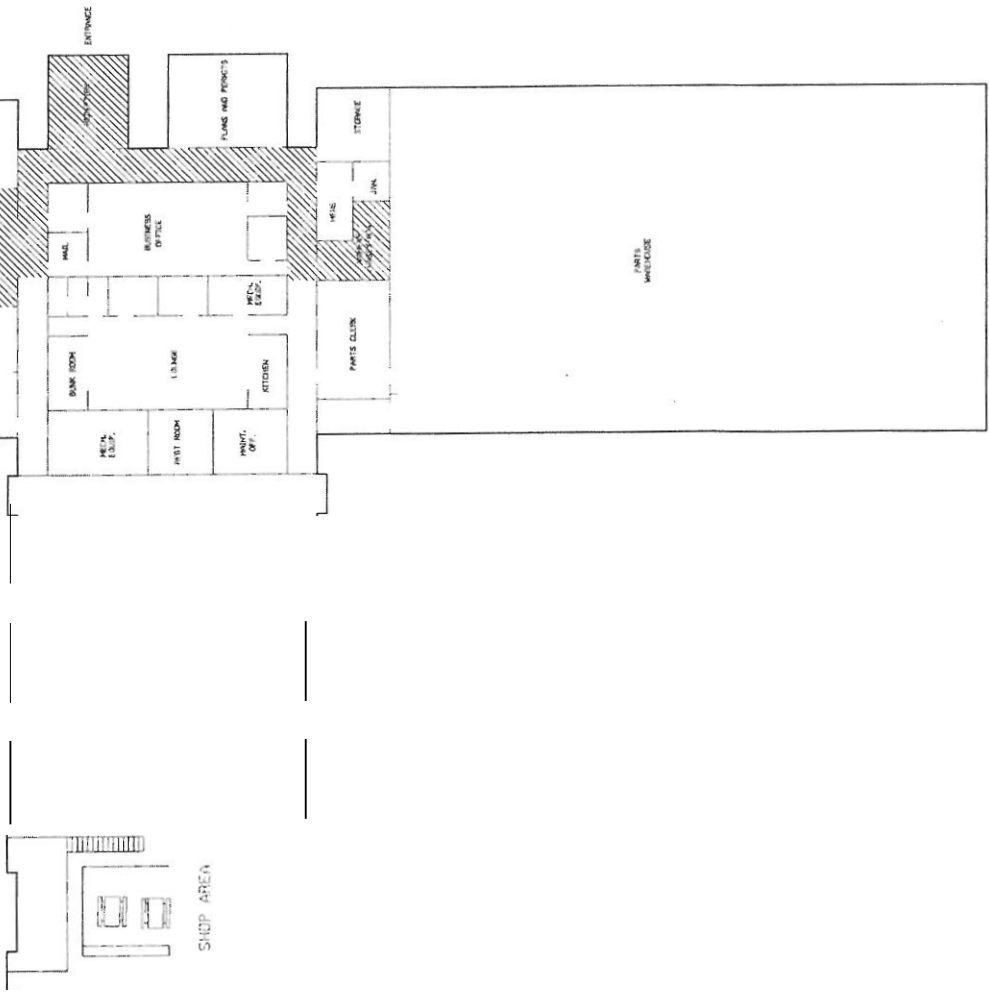
helena@wcc.org



DATE	11/11/11	BY	11/11/11
TIME	11:11	BY	11:11
DATE	11/11/11	BY	11/11/11
TIME	11:11	BY	11:11

DATE	11/11/11	BY	11/11/11
TIME	11:11	BY	11:11
DATE	11/11/11	BY	11/11/11
TIME	11:11	BY	11:11

WATCHED AREAS IDENTIFY PUBLIC ACCESSION



DISTRICT # 3

P-1

11/11/11

11:11

11/11/11

11:11

ADA Self Assessment

1. **Determine limits** within AHTD buildings for Public Meetings – this will be marked on each floor plan sheet for every building that will have “open to the public” type meetings or that are built specifically for public use, i.e., Rest Areas and Welcome Centers.
Time Frame – Complete by April 1st.
2. **Physically inspect** all public access points identified on the plan sheets for every building -- each building will be inspected and a detailed list of modifications necessary for ADA compliance will be made.
Time Frame – Complete by June 1st.
3. **An estimate and a schedule** to complete the modifications will be made which will become the “Transition Plan”.
Time Frame – Complete by July 1st.
4. Develop a “public review” for comments and input – this may be in the form of an open public meeting that will be appropriately advertised or it may be a scheduled meeting for invited participants that we are aware have personal interest in the success of ADA access compliance.
Time Frame – Complete by August 1st.
5. After the “public review” process and incorporating of valid concerns into the “Transition Plan”, the plan will be submitted to the FHWA for approval.
Time Frame – Complete by September 1st.
6. **Facilities Management will package** the various modification elements for work by contract or by in-house labor and will ensure that the schedule committed to in the “Transition Plan” will be met.
Time Frame – all modifications to complete ADA access compliance will be accomplished between October 1st, 2011 and December 31st, 2011.

**CENTRAL OFFICE COMPLEX
ADA COMPLIANCE REQUIREMENTS
2011**

BASEMENT

CAFETERIA:

- Need four (4) ADA slots (27" clear A.F.F., 19" deep, 28-34" table height) Have none. Existing 28" clear above finished floor (A.F.F.), 16.5" deep, 30" table height, 63 chairs, 5% ADA compliant = 4 positions. **\$ 650.00**
- Food service line tray slides to be 34" max A.F.F. Existing is 35-35.5" A.F.F. **No Cost**

1st FLOOR:

- Presently ADA compliant.

2nd FLOOR:

- Presently ADA compliant.

3rd FLOOR:

- Need lever/handles on door latches into secretary and conference rooms. **\$ 500.00**
- Need 18" (min) clear, interior latch side of secretary door. Electric and telephone outlets in the way on floor. **No Cost**

4th FLOOR:

- Room 405 needs lever handle. **\$ 250.00**
- Room 405 needs 18" (min) clear inside door- latch side. **No Cost**
- Need lever latch into office. **\$ 250.00**

5th FLOOR:

- Needs lever handle- Room 501. **\$ 250.00**
- Needs 18" (min) clear inside door Room 501, latch side. Existing is 12". **No Cost**
- Need 36" clear between 1st desk and forms rack. Existing is 33", but rack is portable. **No Cost**

6th FLOOR:

- Men's restroom door needs reversed swing. **\$ 3300.00**
- Door to Room 602 to be lever handle. **\$ 250.00**
- Need 18" (min) clear inside latch. **No Cost**

7th FLOOR:

- Door hallway into Room 703 needs lever handle. **\$ 250.00**
- Conference table needs 19" clear under table, max on end is 16". **\$ 3000.00**

CENTRAL OFFICE COMPLEX ADA COMPLIANCE REQUIREMENTS 2011

8th FLOOR:

- | | |
|--|------------|
| • Room 802 and 804 need lever latches. | \$ 500.00 |
| • Conference room and break rooms need lever handles. | \$ 500.00 |
| • Break room table needs 19" clear under, end is 16". | \$ 500.00 |
| • Conference room table is 25.5" A.F.F. clear, needs 27" A.F.F. clear. | \$ 3000.00 |

9th FLOOR:

- | | |
|---|------------|
| • Need lever handles on door locks hallway into Room 907 and conference room. | \$ 500.00 |
| • Conference room table needs 19" clear under, end is 16". | \$ 3000.00 |

10th FLOOR:

- | | |
|---|------------|
| • Need lever handle- conference room to hallway door. | \$ 250.00 |
| • Need 18" (min) latch-side inside clearance door to hallway from conference room. Existing is 13" (chair). | No Cost |
| | \$16950.00 |

PLANNING BUILDING

- | | |
|--|-----------|
| • Needs lever latches into Room 100 and conference room. | \$ 500.00 |
| • Conference table needs 19" clear under, existing is 14.5". | \$3000.00 |
| • Conference room bookshelf leaves 13.5" clear at interior latch side of conference room door; needs 18" (min). | No Cost |
| • Desk leaves 8" clear at interior latch side Room 100; needs 18" (min); desk to be moved. | No Cost |
| • Men's restroom door has no interior door latch side clearance. Possibly move door and door jamb to ~3' off aisle to interior end of janitor's closet wall. | \$1700.00 |
| | \$5200.00 |

ANNEX

- Presently ADA compliant

TOTAL

\$22,150.00

**MAINTENANCE
ADA COMPLIANCE REQUIREMENTS
2011**

• Drinking fountain spout 42" A.F.F. Max to be 36". Side access dimensions OK.	\$ 500.00
• Urinals in shop restroom have 22" lips. Need one urinal lowered to 17" max A.F.F.	\$ 700.00
• Conference room needs lever latch handle.	\$ 250.00
• Conference room needs 19" clear; 27" A.F.F. Existing is 3.375" clear.	\$3000.00
	<hr/> \$4450.00

**EQUIPMENT AND PROCUREMENT
ADA COMPLIANCE REQUIREMENTS
2011**

• Restrooms need lever latch handles.	\$ 500.00
• Conference room needs lever latch handles.	\$ 250.00
• Conference room table needs 19" clear under table, existing is 4" clear.	\$3000.00
	<hr/>
	\$3750.00

**MATERIALS LABORATORY
ADA COMPLIANCE REQUIREMENTS
2011**

- Presently ADA compliant

**DISTRICT HEADQUARTERS
ADA COMPLIANCE REQUIREMENTS
2011**

DISTRICT 1:

- Presently ADA compliant.

DISTRICT 2:

- Presently ADA compliant.

DISTRICT 3:

- Front doors are double 30" storefront, need 36" door with 12" sidelights on each side or modify to 2-36" doors; 8 # pull closer.

\$5500.00

DISTRICT 4:

- New District Headquarters under construction.

DISTRICT 5:

- Presently ADA compliant.

DISTRICT 6:

- Presently ADA compliant.

DISTRICT 7:

- Presently ADA compliant.

DISTRICT 8:

- Presently ADA compliant.

DISTRICT 9:

- Presently ADA compliant.

DISTRICT 10:

- Presently ADA compliant.

\$5500.00

WELCOME CENTER & REST AREA ADA COMPLIANCE REQUIREMENTS 2011

DISTRICT 1

FORREST CITY REST AREA (EB):

- Restroom signage needs to conform to ADA approved standards (signs must be affixed to wall next to latch or lock of door). \$ 30.00
- Handicap accessibility parking spaces need repainting.
- International Symbol of Accessibility logos need repainting.
- One ADA approved picnic table is required. \$ 1,000.00

FORREST CITY REST AREA (WB):

- Door closers need to be readjusted.
- Flush valves (toilets) need to be readjusted.
- Restroom signage needs to conform to ADA approved standards (signs must be affixed to wall next to latch or lock of door). \$ 30.00
- Handicap accessibility parking spaces need repainting.
- International Symbol of Accessibility logos need repainting.
- One ADA approved picnic table is required. \$ 1,000.00

WEST MEMPHIS WELCOME CENTER:

- Flush valves (toilets) need to be readjusted.
- Mirror needs to conform to ADA specified height (40").
- Restroom signage needs to conform to ADA approved standards (signs must be affixed to wall next to latch or lock of door). \$ 30.00
- Handicap accessibility parking spaces need repainting.
- International Symbol of Accessibility logos need repainting.
- One ADA approved picnic table is required. \$ 1,000.00

HELENA WELCOME CENTER:

- Mirror needs to conform to ADA specified height (40").
- Restroom signage needs to conform to ADA approved standards (signs must be affixed to wall next to latch or lock of door). \$ 30.00
- One ADA approved picnic table is required. \$ 1,000.00

DISTRICT 2

DERMOTT REST AREA:

- Flush valves (toilets) need to be readjusted.
- Restroom signage needs to conform to ADA approved standards (signs must be affixed to wall next to latch or lock of door). \$ 30.00
- International Symbol of Accessibility logos need repainting.
- Van assessable sign is needed (east parking lot).
- One ADA approved picnic table is required. \$ 1,000.00
- Need men's and women's outside doors and frames swapped to obtain 18" (min.) clear at interior lock side of doors. \$ 4,000.00

LAKE VILLAGE WELCOME CENTER:

- Welcome Center is presently ADA compliant.

**WELCOME CENTER & REST AREA
ADA COMPLIANCE REQUIREMENTS
2011**

DISTRICT 3

GLENWOOD REST AREA:

- Flush valves (toilets) need to be readjusted.
- Handicap accessibility parking spaces need repainting.
- International Symbol of Accessibility logos need repainting.
- One ADA approved picnic table is required. \$ 1,000.00

RED RIVER WELCOME CENTER:

- Flush valves (toilets) need to be readjusted.
- Restroom signage needs to conform to ADA approved standards (signs must be affixed to wall next to latch or lock of door). \$ 30.00
- Handicap accessibility parking spaces need repainting.
- International Symbol of Accessibility logos need repainting.
- One ADA approved picnic table is required. \$ 1,000.00

TEXARKANA WELCOME CENTER:

- Welcome Center is presently ADA compliant.

DISTRICT 4

OZARK REST AREA (EB):

- Handicap accessibility parking spaces need repainting.
- International Symbol of Accessibility logos need repainting.
- One ADA approved picnic table is required. \$ 1,000.00

OZARK REST AREA (WB):

- Handicap accessibility parking spaces need repainting.
- International Symbol of Accessibility logos need repainting.
- One ADA approved picnic table is required. \$ 1,000.00

WALDRON REST AREA:

- Handicap accessibility parking spaces need repainting.
- International Symbol of Accessibility logos need repainting.
- One ADA approved picnic table is required. \$ 1,000.00

VAN BUREN WELCOME CENTER:

- Welcome Center is presently ADA compliant.

DISTRICT 5

SALADO CREEK REST AREA:

- Mirrors need to conform to ADA specified heights (40").
- Restroom signage needs to conform to ADA approved standards (signs must be affixed to wall next to latch or lock of door). \$ 30.00
- Handicap accessibility parking spaces need repainting.

**WELCOME CENTER & REST AREA
ADA COMPLIANCE REQUIREMENTS
2011**

DISTRICT 6

SOCIAL HILL REST AREA:

- Flush valves (toilets) need to be readjusted.
- Operational valves (lavatories) need to be readjusted.
- Handicap accessibility parking spaces need repainting.
- International Symbol of Accessibility logos need repainting.
- One ADA approved picnic table is required. \$ 1,000.00

LONSDALE REST AREA:

- Flush valves (toilets) need to be readjusted.
- Operational valves (lavatories) need to be readjusted.
- Handicap accessibility parking spaces need repainting.
- One ADA approved picnic table is required. \$ 1,000.00
- Concrete walks are a trip hazard in places.

WHITE RIVER REST AREA (EB):

- Flush valves (toilets) need to be readjusted.
- Mirrors need to conform to ADA specified heights (40").
- Restroom signage needs to conform to ADA approved standards (signs must be affixed to wall next to latch or lock of door). \$ 30.00
- International Symbol of Accessibility logos need repainting.
- One ADA approved picnic table is required. \$ 1,000.00
- Concrete walks are a trip hazard in places.

WHITE RIVER REST AREA (WB):

- Flush valves (toilets) need to be readjusted.
- Mirrors need to conform to ADA specified heights (40").
- Restroom signage needs to conform to ADA approved standards (signs must be affixed to wall next to latch or lock of door). \$ 30.00
- International Symbol of Accessibility logos need repainting.
- One ADA approved picnic table is required. \$ 1,000.00
- Concrete walks are a trip hazard in places.

DISTRICT 7

GURDON REST AREA (EB):

- Mirrors need to conform to ADA specified heights (40").
- Restrooms need door closers.
- One ADA approved picnic table is required. \$ 1,000.00

GURDON REST AREA (WB):

- Restrooms need door closers.
- Handicap accessibility parking spaces need repainting.
- International Symbol of Accessibility logos need repainting.
- One ADA approved picnic table is required. \$ 1,000.00

WELCOME CENTER & REST AREA ADA COMPLIANCE REQUIREMENTS 2011

BUENA VISTA REST AREA:

- Flush valves (toilets) need to be readjusted.
- Handicap stall (women's) lacks handicap grab bars. \$ 200.00
- Restroom signage needs to conform to ADA approved standards (signs must be affixed to wall next to latch or lock of door). \$ 30.00
- Handicap accessibility parking spaces need repainting.
- International Symbol of Accessibility logos need repainting.
- One ADA approved picnic table is required. \$ 1,000.00
- Concrete walks are a trip hazard in places.

RISON REST AREA:

- Door closers need to be readjusted.
- Restroom signage needs to conform to ADA approved standards (signs must be affixed to wall next to latch or lock of door). \$ 30.00
- Handicap accessibility parking spaces need repainting.
- International Symbol of Accessibility logos need repainting.
- One ADA approved picnic table is required. \$ 1,000.00
- Need men's and women's outside doors and frames swapped to obtain 18" (min.) clear at interior lock side of doors. \$ 4,000.00
- Need to remove 4" block urinal screens for handicapped access to urinals. Install new baked enamel screens and retile. Need 30" (min.) clear. \$ 2,500.00

ELDORADO WELCOME CENTER:

- Welcome Center is presently ADA compliant.

DISTRICT 8

BIG PINEY REST AREA (EB):

- Flush valves (toilets) need to be readjusted.
- Handicap accessibility parking spaces need repainting.

BIG PINEY REST AREA (WB):

- Flush valves (toilets) need to be readjusted.
- Handicap accessibility parking spaces need repainting.

DISTRICT 9

HARRISON WELCOME CENTER:

- Flush valves (toilets) need to be readjusted.
- One ADA approved picnic table is required. \$ 1,000.00

BELLA VISTA WELCOME CENTER:

- Flush valves (toilets) need to be readjusted.
- Handicap accessibility parking spaces need repainting.
- International Symbol of Accessibility logos need repainting.
- One ADA approved picnic table is required. \$ 1,000.00

**WELCOME CENTER & REST AREA
ADA COMPLIANCE REQUIREMENTS
2011**

SILOAM SPRINGS WELCOME CENTER:

- Restroom signage needs to conform to ADA approved standards (signs must be affixed to wall next to latch or lock of door). \$ 30.00
- One ADA approved picnic table is required. \$ 1,000.00

DISTRICT 10

IMBODEN/BLACKROCK REST AREA:

- Restroom signage needs to conform to ADA approved standards (signs must be affixed to wall next to latch or lock of door). \$ 30.00
- Handicap accessibility parking spaces need repainting.
- One ADA approved picnic table is required. \$ 1,000.00

CORNING WELCOME CENTER:

- Welcome Center is presently ADA compliant.

BLYTHEVILLE WELCOME CENTER:

- Welcome Center is presently ADA compliant.

\$33,090.00

SCHEDULE OF UPDATES

Facility	Required Update	Cost	Date to be completed
Equipment and Procurement	Add lever latch handles on restrooms	\$ 500.00	6/30/2012 completed
Equipment and Procurement	Add lever latch handles on conference room doors	\$ 250.00	6/30/2012 completed
Equipment and Procurement	Raise conference room table to 19" clear under table	\$3,000.00	6/30/2012 completed
District 1	Presently ADA compliant		
District 2	Presently ADA compliant		
District 3	Front doors are 30" storefront and need to be replaced with 36" door with 12" sidelights on each side or modify to 2=36" doors; 8# pull closer	\$5,500.00	6/30/2012 completed
District 4	Presently ADA compliant		
District 5	Presently ADA compliant		
District 6	Presently ADA compliant		
District 7	Presently ADA compliant		
District 8	Presently ADA compliant		
District 9	Presently ADA compliant		
District 10	Presently ADA compliant		
Materials Laboratory	Presently ADA complaint		
Planning Building	Add lever latches to room 100 and conference room	\$ 500.00	6/30/2012 completed
Planning Building	Conference room table needs 19" clear under, existing is 14.5"	\$3,000.00	6/30/2012 completed
Planning Building	Conference room bookshelf leaves 13.5" clear at interior latch side of conference room door, needs 18" minimum	No cost	6/30/2012 completed
Planning Building	Desk leaves 8" clear at interior latch side Room 100; needs 18" min.' desk to be moved	No cost	6/30/2012 completed
Planning Building	Men's restroom door has no interior door latch side clearance. Possibly move door	\$ 1,700.00	6/30/2012 completed

	and door jamb to -3' off aisle to interior end of janitor's closet wall		
Maintenance Building	Drinking fountain spout 42" A.F.F. Max to be 36". Side access dimensions OK. Urinals in shop restroom have 22" lips, need one urinal lowered to 17" max A.F.F. Conference room needs lever latch handle. Conference room needs 19" clear; 17" A.F.F. Existing is 3.375" clear.	\$ 4,450.00	6/30/2012 completed
Central Office Complex			
Cafeteria	Need four ADA slots (27" clear A.F.F., 19" deep, 28-34" table height); have none. Existing 28" clear above finished floor (A.F.F.), 16.5" deep, 30" table height, 63 chairs, 5% ADA compliant=4 positions	\$ 650.00	6/30/2012 completed
Cafeteria	Food service line tray slides to be 34" max A.F.F. Existing is 35-35.5" A.F.F.	No cost	6/30/2012
1 st Floor	Presently ADA complaint		
2 nd Floor	Presently ADA compliant		
3 rd Floor	Need lever/handles on door latches into secretary and conference rooms. Need 18" (min) clear, interior latch side of secretary door. Electric and telephone outlines in the way on the floor.	\$ 500.00	6/30/2012 completed
4 th Floor	Room 405 needs lever handle and 18" (min) clear inside door-latch side. Need lever latch into office.	\$ 500.00	6/30/2012 completed
5 th Floor	Needs lever handle on Room 501. Needs 18" (min) clear inside door- latch side. Need lever latch into office	\$ 250.00	6/30/2012 completed
6 th Floor	Men's restroom door needs reversed swing. Door to room 602 needs a lever handle. Need 18" (min) clear inside latch	\$ 3,550.00	6/30/2012 completed
7 th Floor	Door hallway into room 703 needs lever handle. Conference table needs 19" clear under table, max on end is 16".	\$ 3,250.00	6/30/2012 completed
8 th Floor	Room 802 and 804 need lever latches. Conference room and break rooms need lever handles. Break room table needs 19" clear under, end is 16". Conference room table is 25.5" A.F.F. clear, needs 27" A.F.F. clear.	\$ 4,500.00	6/30/2012 completed

9 th Floor	Need lever handles on door locks in hallway into room 907 and conference room. Conference room table needs 19" clear under, end is 16".	\$ 3,500.00	6/30/2012 completed
10 th Floor	Need lever handle – conference room to hallway door. Need 18" (min) latch – side inside clearance door to hallway from conference room. Existing is 13" (chair)	\$ 250.00	6/30/2012 completed
Annex	Presently ADA complaint		
	DISTRICT 1 REST AREAS & WELCOME CENTERS		
Forrest City Rest Area- EB	Restroom signage needs to conform to ADA approved standards (signs must be affixed to wall next to latch or lock of door). Handicap accessibility parking spaces need repainting. International symbol of accessibility logos need repainting. One ADA approved picnic table is required	\$ 1,030.00	9/30/2012
Forest City Rest Area - WB	Door closers need to be readjusted. Flush valves (toilets) need to be readjusted. Restroom signs need to conform to ADA approved standards (must be affixed to walls next to latch or door lock). Handicap accessibility parking spaces need repainting. International Symbol of Accessibility logos need repainting. One ADA approved picnic table is required.	\$ 1,030.00	9/30/2012

West Memphis Welcome Center	Flush valves (toilets) need to be readjusted. Mirror needs to conform to ADA specified height (40"). Restroom signs need to conform to ADA approved standards (must be affixed to walls next to latch or door lock). Handicap accessibility parking spaces need repainting. International Symbol of Accessibility logos need repainting. One ADA approved picnic table is required.	\$ 1,030.00	New Welcome Center completed 7/31/2012
Helena Welcome Center	Mirror needs to conform to ADA specified height (40"). Restroom signs need to conform to ADA approved standards (signs must be affixed to wall next to latch or lock of door). One ADA approved picnic table is required.	\$ 1,030.00	9/30/2012
	DISTRICT 2 REST AREAS AND WELCOME CENTERS		
Dermott Rest Area	Flush valves (toilets) need to be readjusted. Restroom signs need to conform to ADA approved standards (signs must be affixed to wall next to latch or lock of door). International Symbol of Accessibility logos need repainting. Van accessible sign is needed (East parking lot). One ADA approved picnic table is required. Need men's and women's outside doors and frames swapped to obtain 18" (min.) clear at interior lock side of doors.	\$ 5,030.00	9/30/2012 Material for Doors and Partitioning on order.
Lake Village Welcome Center	Presently ADA compliant		
	DISTRICT 3 REST AREAS AND WELCOME CENTERS		
Glenwood Rest Area	Flush valves (toilets) need to be readjusted. Handicap accessibility parking spaces need repainting. International Symbol of Accessibility logos need repainting. One ADA approved picnic table is required.	\$ 1,000.00	9/30/2012

Red River Welcome Center	Flush valves (toilets) need to be readjusted. Restroom signs need to conform to ADA approved standards (signs must be affixed to wall next to latch or lock of door). International Symbol of Accessibility logos need repainting. Handicap accessibility parking spaces needed. One ADA approved picnic table is required.	\$ 1,030.00	9/30/2012
Texarkana Welcome Center	Welcome Center is presently ADA compliant		
	DISTRICT 4 REST AREAS AND WELCOME CENTERS		
Ozark Rest Area EB	Handicap accessibility parking spaces need repainting. International Symbol of Accessibility logos need repainting. One ADA approved picnic table is required.	\$ 1,000.00	9/30/2012
Ozark Rest Area WB	Handicap accessibility parking spaces need repainting. International Symbol of Accessibility logos need repainting. One ADA approved picnic table is required.	\$ 1,000.00	9/30/2012
Waldron Rest Area	Handicap accessibility parking spaces need repainting. International Symbol of Accessibility logos need repainting. One ADA approved picnic table is required.	\$ 1,000.00	9/30/2012
Van Buren Welcome Center	Welcome Center is presently ADA compliant		
	DISTRICT 5 REST AREAS AND WELCOME CENTERS		
Salado Creek Rest Area	Mirror needs to conform to ADA specified height (40"). Restroom signs need to conform to ADA approved standards (signs must be affixed to wall next to latch or lock of door). Handicap accessibility parking spaces need repainting.	\$ 30.00	9/30/2012

	DISTRICT 6 REST AREAS AND WELCOME CENTERS		
Social Hill Rest Area	Flush valves (toilets) need to be readjusted. Operational Valves (lavatories) need to be readjusted. International Symbol of Accessibility logos need repainting. Handicap accessibility parking spaces needed. One ADA approved picnic table is required.	\$ 1,000.00	9/30/2012
Lonsdale Rest Area	Flush valves (toilets) need to be readjusted. Operational Valves (lavatories) need to be readjusted. Handicap accessibility parking spaces need repainting. Concrete walks are a trip hazard in places.	\$ 1,000.00	9/30/2012 Repaired Doors, installed new ADA Signage.
White River Rest Area EB	Flush valves (toilets) need to be readjusted. Mirrors need to conform to ADA specified heights (40"). Restroom signage needs to conform to ADA approved standards (signs must be affixed to wall next to latch or lock of door). International Symbol of Accessibility logos need repainting. Concrete walks are a trip hazard in places. One ADA approved picnic table is required.	\$ 1,030.00	9/30/2012
White River Rest Area WB	Flush valves (toilets) need to be readjusted. Mirrors need to conform to ADA specified heights (40"). Restroom signage needs to conform to ADA approved standards (signs must be affixed to wall next to latch or lock of door). International Symbol of Accessibility logos need repainting. Concrete walks are a trip hazard in places. One ADA approved picnic table is required.	\$ 1,030.00	9/30/2012
	DISTRICT 7 REST AREAS AND WELCOME CENTERS		
Gurdon Rest Area EB	Mirrors need to conform to ADA specified heights (40"). Restrooms need door closers. One ADA approved picnic table is required.		9/30/2012

Gurden Rest Area EB	Mirrors need to conform to ADA specified heights (40"). Restrooms need door closers. One ADA approved picnic table is required.	\$ 1,000.00	9/30/2012
Gurden Rest Area WB	Restrooms need door closers. Handicap accessibility parking spaces need repainting. International Symbol of Accessibility logos need repainting. One ADA approved picnic table is required.	\$ 1,000.00	9/30/2012
Buena Vista Rest Area	Flush valves (toilets) need to be readjusted. Handicap stall (women's) lacks handicap grab bars. Restroom signage needs to conform to ADA approved standards (signs must be affixed to wall next to latch or lock of door). Handicap accessibility parking spaces need repainting. International Symbol of Accessibility logos need repainting. One ADA approved Picnic table is required. Concrete walks are a trip hazard in places.	\$ 1,230.00	9/30/2012
Rison Rest Area	Door closers need to be readjusted. Restroom signage needs to conform to ADA approved standards (signs must be affixed to wall next to latch or lock of door). Handicap accessibility parking spaces need repainting. International Symbol of Accessibility logos need repainting. One ADA approved Picnic table is required. Need men's and women's outside doors and frames swapped to obtain 18" (min) clear at interior lock sides of doors. Need to remove 4" block urinal screens for handicapped access to urinals. Install new baked enamel screens and retile. Need 30" (min.) clear.	\$ 7,530.00	9/30/2012 Material for Doors and Urinal Screen on order.
Eldorado Welcome Center	Welcome center is presently ADA compliant		

	DISTRICT 8 REST AREAS AND WELCOME CENTERS		
Big Piney Rest Area EB	Flush valves (toilets) need to be readjusted. Handicap accessibility parking spaces need repainting		9/30/2012
Big Piney Rest Area WB	Flush valves (toilets) need to be readjusted. Handicap accessibility parking spaces need repainting.		9/30/2012
	DISTRICT 9 REST AREAS AND WELCOME CENTERS		
Harrison Welcome Center	Flush valves (toilets) need to be readjusted. One ADA approved picnic table is required.	\$ 1,000.00	9/30/2012
Bella Vista Welcome Center	Flush valves (toilets) need to be readjusted. Handicap accessibility parking spaces need repainting. International Symbol of Accessibility logos need repainting. Handicap accessibility parking spaces needed. One ADA approved picnic table is required.	\$ 1,000.00	9/30/2012
Siloam Springs Welcome Center	Restroom signage needs to conform to ADA approved standards (signs must be affixed to wall next to latch or lock of door). One ADA approved picnic table is required.	\$ 1,030.00	9/30/2012
	DISTRICT 10 REST AREAS AND WELCOME CENTERS		
Imboden/Blackrock Rest Area	Restroom signage needs to conform to ADA approved standards (signs must be affixed to wall next to latch or lock of door). Handicap accessibility parking spaces needed. One ADA approved picnic table is required.	\$ 1,030.00	9/30/2012
Corning Welcome Center	Welcome Center is presently ADA compliant		
Blytheville Welcome Center	Welcome Center is presently ADA complaint		
Total Cost of Updates:			\$68,940.00

Nelson, Joanna P.

From: Valera.McDaniel@dot.gov
Sent: Friday, November 02, 2012 10:42 AM
To: Nelson, Joanna P.
Subject: RE: ADA Plan Implementation Update

Holy Cow!!! Everythin is complete!!! Yay!!!

No need to send this in formally. This email works great for me! I will add it to my file!

Great Job!!

Tell Ray how awesome he is for staying on top of this!!

And Welcome back to you!! :)

~V

From: Nelson, Joanna P. [Joanna.Nelson@arkansashighways.com]
Sent: Friday, November 02, 2012 11:05 AM
To: McDaniel, Valera (FHWA)
Subject: FW: ADA Plan Implementation Update

Please see the attached update on the ADA plan Implementation.

Will I need to submit this as a formal document?

Joanna P. Nelson
Section Head-E.E.O/D.B.E
AHTD
Phone: 501-569-2298
Fax: 501-569-2965

From: Gruver, Ray
Sent: Wednesday, October 24, 2012 3:48 PM
To: Nelson, Joanna P.
Subject: RE: ADA Plan Implementation Update

Hi Joanna:

Attached is the ADA Plan/Schedule of improvements needed to be in ADA compliance.
After you have had time to review the plan, if you would like, we can go over it in detail.
Thanks

From: Nelson, Joanna P.
Sent: Wednesday, October 24, 2012 2:00 PM
To: Gruver, Ray
Subject: ADA Plan Implementation Update
Good afternoon Ray,

I wanted to follow up with you based on our recent conversation about the implementation of the revised ADA plan.

Do you know when you would have the update available?

Thank you

Joanna P. Nelson
Section Head-E.E.O/D.B.E
AHTD
Phone: 501-569-2298
Fax: 501-569-2965

ADA Self Assessment

1. **Determine limits** within AHTD buildings for Public Meetings – this will be marked on each floor plan sheet for every building that will have “open to the public” type meetings or that are built specifically for public use, i.e., Rest Areas and Welcome Centers.
Time Frame – Complete by April 1st.
2. **Physically inspect** all public access points identified on the plan sheets for every building -- each building will be inspected and a detailed list of modifications necessary for ADA compliance will be made.
Time Frame – Complete by June 1st.
3. **An estimate and a schedule** to complete the modifications will be made which will become the “Transition Plan”.
Time Frame – Complete by July 1st.
4. Develop a “public review” for comments and input – this may be in the form of an open public meeting that will be appropriately advertised or it may be a scheduled meeting for invited participants that we are aware have personal interest in the success of ADA access compliance.
Time Frame – Complete by August 1st.
5. After the “public review” process and incorporating of valid concerns into the “Transition Plan”, the plan will be submitted to the FHWA for approval.
Time Frame – Complete by September 1st.
6. **Facilities Management will package** the various modification elements for work by contract or by in-house labor and will ensure that the schedule committed to in the “Transition Plan” will be met.
Time Frame – all modifications to complete ADA access compliance will be accomplished between October 1st, 2011 and December 31st, 2011.

**CENTRAL OFFICE COMPLEX
ADA COMPLIANCE REQUIREMENTS
2011**

BASEMENT

CAFETERIA:

- Need four (4) ADA slots (27" clear A.F.F., 19" deep, 28-34" table height) Have none. Existing 28" clear above finished floor (A.F.F.), 16.5" deep, 30" table height, 63 chairs, 5% ADA compliant = 4 positions. **\$ 650.00**
- Food service line tray slides to be 34" max A.F.F. Existing is 35-35.5" A.F.F. **No Cost**

1st FLOOR:

- Presently ADA compliant.

2nd FLOOR:

- Presently ADA compliant.

3rd FLOOR:

- Need lever/handles on door latches into secretary and conference rooms. **\$ 500.00**
- Need 18" (min) clear, interior latch side of secretary door. Electric and telephone outlets in the way on floor. **No Cost**

4th FLOOR:

- Room 405 needs lever handle. **\$ 250.00**
- Room 405 needs 18" (min) clear inside door- latch side. **No Cost**
- Need lever latch into office. **\$ 250.00**

5th FLOOR:

- Needs lever handle- Room 501. **\$ 250.00**
- Needs 18" (min) clear inside door Room 501, latch side. Existing is 12". **No Cost**
- Need 36" clear between 1st desk and forms rack. Existing is 33", but rack is portable. **No Cost**

6th FLOOR:

- Men's restroom door needs reversed swing. **\$ 3300.00**
- Door to Room 602 to be lever handle. **\$ 250.00**
- Need 18" (min) clear inside latch. **No Cost**

7th FLOOR:

- Door hallway into Room 703 needs lever handle. **\$ 250.00**
- Conference table needs 19" clear under table, max on end is 16". **\$ 3000.00**

**CENTRAL OFFICE COMPLEX
ADA COMPLIANCE REQUIREMENTS
2011**

8th FLOOR:

- | | |
|--|------------|
| • Room 802 and 804 need lever latches. | \$ 500.00 |
| • Conference room and break rooms need lever handles. | \$ 500.00 |
| • Break room table needs 19" clear under, end is 16". | \$ 500.00 |
| • Conference room table is 25.5" A.F.F. clear, needs 27" A.F.F. clear. | \$ 3000.00 |

9th FLOOR:

- | | |
|---|------------|
| • Need lever handles on door locks hallway into Room 907 and conference room. | \$ 500.00 |
| • Conference room table needs 19" clear under, end is 16". | \$ 3000.00 |

10th FLOOR:

- | | |
|---|------------------|
| • Need lever handle- conference room to hallway door. | \$ 250.00 |
| • Need 18" (min) latch-side inside clearance door to hallway from conference room. Existing is 13" (chair). | No Cost |
| | <hr/> \$16950.00 |

PLANNING BUILDING

- | | |
|--|-----------------|
| • Needs lever latches into Room 100 and conference room. | \$ 500.00 |
| • Conference table needs 19" clear under, existing is 14.5". | \$3000.00 |
| • Conference room bookshelf leaves 13.5" clear at interior latch side of conference room door; needs 18" (min). | No Cost |
| • Desk leaves 8" clear at interior latch side Room 100; needs 18" (min); desk to be moved. | No Cost |
| • Men's restroom door has no interior door latch side clearance. Possibly move door and door jamb to ~3' off aisle to interior end of janitor's closet wall. | \$1700.00 |
| | <hr/> \$5200.00 |

ANNEX

- Presently ADA compliant

TOTAL	\$22,150.00
--------------	--------------------

**MAINTENANCE
ADA COMPLIANCE REQUIREMENTS
2011**

• Drinking fountain spout 42" A.F.F. Max to be 36". Side access dimensions OK.	\$ 500.00
• Urinals in shop restroom have 22" lips. Need one urinal lowered to 17" max A.F.F.	\$ 700.00
• Conference room needs lever latch handle.	\$ 250.00
• Conference room needs 19" clear; 27" A.F.F. Existing is 3.375" clear.	\$3000.00
	<hr/> \$4450.00

**EQUIPMENT AND PROCUREMENT
ADA COMPLIANCE REQUIREMENTS
2011**

• Restrooms need lever latch handles.	\$ 500.00
• Conference room needs lever latch handles.	\$ 250.00
• Conference room table needs 19" clear under table, existing is 4" clear.	\$3000.00
	<hr/>
	\$3750.00

**MATERIALS LABORATORY
ADA COMPLIANCE REQUIREMENTS
2011**

- Presently ADA compliant

**DISTRICT HEADQUARTERS
ADA COMPLIANCE REQUIREMENTS
2011**

DISTRICT 1:

- Presently ADA compliant.

DISTRICT 2:

- Presently ADA compliant.

DISTRICT 3:

- Front doors are double 30" storefront, need 36" door with 12" sidelights on each side or modify to 2-36" doors; 8 # pull closer.

\$5500.00

DISTRICT 4:

- New District Headquarters under construction.

DISTRICT 5:

- Presently ADA compliant.

DISTRICT 6:

- Presently ADA compliant.

DISTRICT 7:

- Presently ADA compliant.

DISTRICT 8:

- Presently ADA compliant.

DISTRICT 9:

- Presently ADA compliant.

DISTRICT 10:

- Presently ADA compliant.

\$5500.00

WELCOME CENTER & REST AREA ADA COMPLIANCE REQUIREMENTS 2011

DISTRICT 1

FORREST CITY REST AREA (EB):

- Restroom signage needs to conform to ADA approved standards (signs must be affixed to wall next to latch or lock of door). \$ 30.00
- Handicap accessibility parking spaces need repainting.
- International Symbol of Accessibility logos need repainting.
- One ADA approved picnic table is required. \$ 1,000.00

FORREST CITY REST AREA (WB):

- Door closers need to be readjusted.
- Flush valves (toilets) need to be readjusted.
- Restroom signage needs to conform to ADA approved standards (signs must be affixed to wall next to latch or lock of door). \$ 30.00
- Handicap accessibility parking spaces need repainting.
- International Symbol of Accessibility logos need repainting.
- One ADA approved picnic table is required. \$ 1,000.00

WEST MEMPHIS WELCOME CENTER:

- Flush valves (toilets) need to be readjusted.
- Mirror needs to conform to ADA specified height (40").
- Restroom signage needs to conform to ADA approved standards (signs must be affixed to wall next to latch or lock of door). \$ 30.00
- Handicap accessibility parking spaces need repainting.
- International Symbol of Accessibility logos need repainting.
- One ADA approved picnic table is required. \$ 1,000.00

HELENA WELCOME CENTER:

- Mirror needs to conform to ADA specified height (40").
- Restroom signage needs to conform to ADA approved standards (signs must be affixed to wall next to latch or lock of door). \$ 30.00
- One ADA approved picnic table is required. \$ 1,000.00

DISTRICT 2

DERMOTT REST AREA:

- Flush valves (toilets) need to be readjusted.
- Restroom signage needs to conform to ADA approved standards (signs must be affixed to wall next to latch or lock of door). \$ 30.00
- International Symbol of Accessibility logos need repainting.
- Van assessable sign is needed (east parking lot).
- One ADA approved picnic table is required. \$ 1,000.00
- Need men's and women's outside doors and frames swapped to obtain 18" (min.) clear at interior lock side of doors. \$ 4,000.00

LAKE VILLAGE WELCOME CENTER:

- Welcome Center is presently ADA compliant.

**WELCOME CENTER & REST AREA
ADA COMPLIANCE REQUIREMENTS
2011**

DISTRICT 3

GLENWOOD REST AREA:

- Flush valves (toilets) need to be readjusted.
- Handicap accessibility parking spaces need repainting.
- International Symbol of Accessibility logos need repainting.
- One ADA approved picnic table is required. \$ 1,000.00

RED RIVER WELCOME CENTER:

- Flush valves (toilets) need to be readjusted.
- Restroom signage needs to conform to ADA approved standards (signs must be affixed to wall next to latch or lock of door). \$ 30.00
- Handicap accessibility parking spaces need repainting.
- International Symbol of Accessibility logos need repainting.
- One ADA approved picnic table is required. \$ 1,000.00

TEXARKANA WELCOME CENTER:

- Welcome Center is presently ADA compliant.

DISTRICT 4

OZARK REST AREA (EB):

- Handicap accessibility parking spaces need repainting.
- International Symbol of Accessibility logos need repainting.
- One ADA approved picnic table is required. \$ 1,000.00

OZARK REST AREA (WB):

- Handicap accessibility parking spaces need repainting.
- International Symbol of Accessibility logos need repainting.
- One ADA approved picnic table is required. \$ 1,000.00

WALDRON REST AREA:

- Handicap accessibility parking spaces need repainting.
- International Symbol of Accessibility logos need repainting.
- One ADA approved picnic table is required. \$ 1,000.00

VAN BUREN WELCOME CENTER:

- Welcome Center is presently ADA compliant.

DISTRICT 5

SALADO CREEK REST AREA:

- Mirrors need to conform to ADA specified heights (40").
- Restroom signage needs to conform to ADA approved standards (signs must be affixed to wall next to latch or lock of door). \$ 30.00
- Handicap accessibility parking spaces need repainting.

**WELCOME CENTER & REST AREA
ADA COMPLIANCE REQUIREMENTS
2011**

DISTRICT 6

SOCIAL HILL REST AREA:

- Flush valves (toilets) need to be readjusted.
- Operational valves (lavatories) need to be readjusted.
- Handicap accessibility parking spaces need repainting.
- International Symbol of Accessibility logos need repainting.
- One ADA approved picnic table is required. \$ 1,000.00

LONSDALE REST AREA:

- Flush valves (toilets) need to be readjusted.
- Operational valves (lavatories) need to be readjusted.
- Handicap accessibility parking spaces need repainting.
- One ADA approved picnic table is required. \$ 1,000.00
- Concrete walks are a trip hazard in places.

WHITE RIVER REST AREA (EB):

- Flush valves (toilets) need to be readjusted.
- Mirrors need to conform to ADA specified heights (40").
- Restroom signage needs to conform to ADA approved standards (signs must be affixed to wall next to latch or lock of door). \$ 30.00
- International Symbol of Accessibility logos need repainting.
- One ADA approved picnic table is required. \$ 1,000.00
- Concrete walks are a trip hazard in places.

WHITE RIVER REST AREA (WB):

- Flush valves (toilets) need to be readjusted.
- Mirrors need to conform to ADA specified heights (40").
- Restroom signage needs to conform to ADA approved standards (signs must be affixed to wall next to latch or lock of door). \$ 30.00
- International Symbol of Accessibility logos need repainting.
- One ADA approved picnic table is required. \$ 1,000.00
- Concrete walks are a trip hazard in places.

DISTRICT 7

GURDON REST AREA (EB):

- Mirrors need to conform to ADA specified heights (40").
- Restrooms need door closers.
- One ADA approved picnic table is required. \$ 1,000.00

GURDON REST AREA (WB):

- Restrooms need door closers.
- Handicap accessibility parking spaces need repainting.
- International Symbol of Accessibility logos need repainting.
- One ADA approved picnic table is required. \$ 1,000.00

WELCOME CENTER & REST AREA ADA COMPLIANCE REQUIREMENTS 2011

BUENA VISTA REST AREA:

- Flush valves (toilets) need to be readjusted.
- Handicap stall (women's) lacks handicap grab bars. \$ 200.00
- Restroom signage needs to conform to ADA approved standards (signs must be affixed to wall next to latch or lock of door). \$ 30.00
- Handicap accessibility parking spaces need repainting.
- International Symbol of Accessibility logos need repainting.
- One ADA approved picnic table is required. \$ 1,000.00
- Concrete walks are a trip hazard in places.

RISON REST AREA:

- Door closers need to be readjusted.
- Restroom signage needs to conform to ADA approved standards (signs must be affixed to wall next to latch or lock of door). \$ 30.00
- Handicap accessibility parking spaces need repainting.
- International Symbol of Accessibility logos need repainting.
- One ADA approved picnic table is required. \$ 1,000.00
- Need men's and women's outside doors and frames swapped to obtain 18" (min.) clear at interior lock side of doors. \$ 4,000.00
- Need to remove 4" block urinal screens for handicapped access to urinals. Install new baked enamel screens and retile. Need 30" (min.) clear. \$ 2,500.00

ELDORADO WELCOME CENTER:

- Welcome Center is presently ADA compliant.

DISTRICT 8

BIG PINEY REST AREA (EB):

- Flush valves (toilets) need to be readjusted.
- Handicap accessibility parking spaces need repainting.

BIG PINEY REST AREA (WB):

- Flush valves (toilets) need to be readjusted.
- Handicap accessibility parking spaces need repainting.

DISTRICT 9

HARRISON WELCOME CENTER:

- Flush valves (toilets) need to be readjusted.
- One ADA approved picnic table is required. \$ 1,000.00

BELLA VISTA WELCOME CENTER:

- Flush valves (toilets) need to be readjusted.
- Handicap accessibility parking spaces need repainting.
- International Symbol of Accessibility logos need repainting.
- One ADA approved picnic table is required. \$ 1,000.00

**WELCOME CENTER & REST AREA
ADA COMPLIANCE REQUIREMENTS
2011**

SILOAM SPRINGS WELCOME CENTER:

- Restroom signage needs to conform to ADA approved standards (signs must be affixed to wall next to latch or lock of door). \$ 30.00
- One ADA approved picnic table is required. \$ 1,000.00

DISTRICT 10

IMBODEN/BLACKROCK REST AREA:

- Restroom signage needs to conform to ADA approved standards (signs must be affixed to wall next to latch or lock of door). \$ 30.00
- Handicap accessibility parking spaces need repainting.
- One ADA approved picnic table is required. \$ 1,000.00

CORNING WELCOME CENTER:

- Welcome Center is presently ADA compliant.

BLYTHEVILLE WELCOME CENTER:

- Welcome Center is presently ADA compliant.

\$33,090.00

SCHEDULE OF UPDATES

Facility	Required Update	Cost	Date to be completed
Equipment and Procurement	Add lever latch handles on restrooms	\$ 500.00	6/30/2012 completed
Equipment and Procurement	Add lever latch handles on conference room doors	\$ 250.00	6/30/2012 completed
Equipment and Procurement	Raise conference room table to 19" clear under table	\$3,000.00	6/30/2012 completed
District 1	Presently ADA compliant		
District 2	Presently ADA compliant		
District 3	Front doors are 30" storefront and need to be replaced with 36" door with 12" sidelights on each side or modify to 2=36" doors; 8# pull closer	\$5,500.00	6/30/2012 completed
District 4	Presently ADA compliant		
District 5	Presently ADA compliant		
District 6	Presently ADA compliant		
District 7	Presently ADA compliant		
District 8	Presently ADA compliant		
District 9	Presently ADA compliant		
District 10	Presently ADA compliant		
Materials Laboratory	Presently ADA complaint		
Planning Building	Add lever latches to room 100 and conference room	\$ 500.00	6/30/2012 completed
Planning Building	Conference room table needs 19" clear under, existing is 14.5"	\$3,000.00	6/30/2012 completed
Planning Building	Conference room bookshelf leaves 13.5" clear at interior latch side of conference room door, needs 18" minimum	No cost	6/30/2012 completed
Planning Building	Desk leaves 8" clear at interior latch side Room 100; needs 18" min.' desk to be moved	No cost	6/30/2012 completed
Planning Building	Men's restroom door has no interior door latch side clearance. Possibly move door	\$ 1,700.00	6/30/2012 completed

	and door jamb to -3' off aisle to interior end of janitor's closet wall		
Maintenance Building	Drinking fountain spout 42" A.F.F. Max to be 36". Side access dimensions OK. Urinals in shop restroom have 22" lips, need one urinal lowered to 17" max A.F.F. Conference room needs lever latch handle. Conference room needs 19" clear; 17" A.F.F. Existing is 3.375" clear.	\$ 4,450.00	6/30/2012 completed
Central Office Complex			
Cafeteria	Need four ADA slots (27" clear A.F.F., 19" deep, 28-34" table height); have none. Existing 28" clear above finished floor (A.F.F.), 16.5" deep, 30" table height, 63 chairs, 5% ADA compliant=4 positions	\$ 650.00	6/30/2012 completed
Cafeteria	Food service line tray slides to be 34" max A.F.F. Existing is 35-35.5" A.F.F.	No cost	6/30/2012
1 st Floor	Presently ADA complaint		
2 nd Floor	Presently ADA compliant		
3 rd Floor	Need lever/handles on door latches into secretary and conference rooms. Need 18" (min) clear, interior latch side of secretary door. Electric and telephone outlines in the way on the floor.	\$ 500.00	6/30/2012 completed
4 th Floor	Room 405 needs lever handle and 18" (min) clear inside door-latch side. Need lever latch into office.	\$ 500.00	6/30/2012 completed
5 th Floor	Needs lever handle on Room 501. Needs 18" (min) clear inside door- latch side. Need lever latch into office	\$ 250.00	6/30/2012 completed
6 th Floor	Men's restroom door needs reversed swing. Door to room 602 needs a lever handle. Need 18" (min) clear inside latch	\$ 3,550.00	6/30/2012 completed
7 th Floor	Door hallway into room 703 needs lever handle. Conference table needs 19" clear under table, max on end is 16".	\$ 3,250.00	6/30/2012 completed
8 th Floor	Room 802 and 804 need lever latches. Conference room and break rooms need lever handles. Break room table needs 19" clear under, end is 16". Conference room table is 25.5" A.F.F. clear, needs 27" A.F.F. clear.	\$ 4,500.00	6/30/2012 completed

9 th Floor	Need lever handles on door locks in hallway into room 907 and conference room. Conference room table needs 19" clear under, end is 16".	\$ 3,500.00	6/30/2012 completed
10 th Floor	Need lever handle – conference room to hallway door. Need 18" (min) latch – side inside clearance door to hallway from conference room. Existing is 13" (chair)	\$ 250.00	6/30/2012 completed
Annex	Presently ADA complaint		
	DISTRICT 1 REST AREAS & WELCOME CENTERS		
Forrest City Rest Area- EB	Restroom signage needs to conform to ADA approved standards (signs must be affixed to wall next to latch or lock of door). Handicap accessibility parking spaces need repainting. International symbol of accessibility logos need repainting. One ADA approved picnic table is required	\$ 1,030.00	9/30/2012
Forest City Rest Area - WB	Door closers need to be readjusted. Flush valves (toilets) need to be readjusted. Restroom signs need to conform to ADA approved standards (must be affixed to walls next to latch or door lock). Handicap accessibility parking spaces need repainting. International Symbol of Accessibility logos need repainting. One ADA approved picnic table is required.	\$ 1,030.00	9/30/2012

West Memphis Welcome Center	Flush valves (toilets) need to be readjusted. Mirror needs to conform to ADA specified height (40"). Restroom signs need to conform to ADA approved standards (must be affixed to walls next to latch or door lock). Handicap accessibility parking spaces need repainting. International Symbol of Accessibility logos need repainting. One ADA approved picnic table is required.	\$ 1,030.00	New Welcome Center completed 7/31/2012
Helena Welcome Center	Mirror needs to conform to ADA specified height (40"). Restroom signs need to conform to ADA approved standards (signs must be affixed to wall next to latch or lock of door). One ADA approved picnic table is required.	\$ 1,030.00	9/30/2012
	DISTRICT 2 REST AREAS AND WELCOME CENTERS		
Dermott Rest Area	Flush valves (toilets) need to be readjusted. Restroom signs need to conform to ADA approved standards (signs must be affixed to wall next to latch or lock of door). International Symbol of Accessibility logos need repainting. Van accessible sign is needed (East parking lot). One ADA approved picnic table is required. Need men's and women's outside doors and frames swapped to obtain 18" (min.) clear at interior lock side of doors.	\$ 5,030.00	9/30/2012 Material for Doors and Partitioning on order.
Lake Village Welcome Center	Presently ADA compliant		
	DISTRICT 3 REST AREAS AND WELCOME CENTERS		
Glenwood Rest Area	Flush valves (toilets) need to be readjusted. Handicap accessibility parking spaces need repainting. International Symbol of Accessibility logos need repainting. One ADA approved picnic table is required.	\$ 1,000.00	9/30/2012

Red River Welcome Center	Flush valves (toilets) need to be readjusted. Restroom signs need to conform to ADA approved standards (signs must be affixed to wall next to latch or lock of door). International Symbol of Accessibility logos need repainting. Handicap accessibility parking spaces needed. One ADA approved picnic table is required.	\$ 1,030.00	9/30/2012
Texarkana Welcome Center	Welcome Center is presently ADA compliant		
	DISTRICT 4 REST AREAS AND WELCOME CENTERS		
Ozark Rest Area EB	Handicap accessibility parking spaces need repainting. International Symbol of Accessibility logos need repainting. One ADA approved picnic table is required.	\$ 1,000.00	9/30/2012
Ozark Rest Area WB	Handicap accessibility parking spaces need repainting. International Symbol of Accessibility logos need repainting. One ADA approved picnic table is required.	\$ 1,000.00	9/30/2012
Waldron Rest Area	Handicap accessibility parking spaces need repainting. International Symbol of Accessibility logos need repainting. One ADA approved picnic table is required.	\$ 1,000.00	9/30/2012
Van Buren Welcome Center	Welcome Center is presently ADA compliant		
	DISTRICT 5 REST AREAS AND WELCOME CENTERS		
Salado Creek Rest Area	Mirror needs to conform to ADA specified height (40"). Restroom signs need to conform to ADA approved standards (signs must be affixed to wall next to latch or lock of door). Handicap accessibility parking spaces need repainting.	\$ 30.00	9/30/2012

	DISTRICT 6 REST AREAS AND WELCOME CENTERS		
Social Hill Rest Area	Flush valves (toilets) need to be readjusted. Operational Valves (lavatories) need to be readjusted. International Symbol of Accessibility logos need repainting. Handicap accessibility parking spaces needed. One ADA approved picnic table is required.	\$ 1,000.00	9/30/2012
Lonsdale Rest Area	Flush valves (toilets) need to be readjusted. Operational Valves (lavatories) need to be readjusted. Handicap accessibility parking spaces need repainting. Concrete walks are a trip hazard in places.	\$ 1,000.00	9/30/2012 Repaired Doors, installed new ADA Signage.
White River Rest Area EB	Flush valves (toilets) need to be readjusted. Mirrors need to conform to ADA specified heights (40"). Restroom signage needs to conform to ADA approved standards (signs must be affixed to wall next to latch or lock of door). International Symbol of Accessibility logos need repainting. Concrete walks are a trip hazard in places. One ADA approved picnic table is required.	\$ 1,030.00	9/30/2012
White River Rest Area WB	Flush valves (toilets) need to be readjusted. Mirrors need to conform to ADA specified heights (40"). Restroom signage needs to conform to ADA approved standards (signs must be affixed to wall next to latch or lock of door). International Symbol of Accessibility logos need repainting. Concrete walks are a trip hazard in places. One ADA approved picnic table is required.	\$ 1,030.00	9/30/2012
	DISTRICT 7 REST AREAS AND WELCOME CENTERS		
Gurdon Rest Area EB	Mirrors need to conform to ADA specified heights (40"). Restrooms need door closers. One ADA approved picnic table is required.		9/30/2012

Gurden Rest Area EB	Mirrors need to conform to ADA specified heights (40"). Restrooms need door closers. One ADA approved picnic table is required.	\$ 1,000.00	9/30/2012
Gurden Rest Area WB	Restrooms need door closers. Handicap accessibility parking spaces need repainting. International Symbol of Accessibility logos need repainting. One ADA approved picnic table is required.	\$ 1,000.00	9/30/2012
Buena Vista Rest Area	Flush valves (toilets) need to be readjusted. Handicap stall (women's) lacks handicap grab bars. Restroom signage needs to conform to ADA approved standards (signs must be affixed to wall next to latch or lock of door). Handicap accessibility parking spaces need repainting. International Symbol of Accessibility logos need repainting. One ADA approved Picnic table is required. Concrete walks are a trip hazard in places.	\$ 1,230.00	9/30/2012
Rison Rest Area	Door closers need to be readjusted. Restroom signage needs to conform to ADA approved standards (signs must be affixed to wall next to latch or lock of door). Handicap accessibility parking spaces need repainting. International Symbol of Accessibility logos need repainting. One ADA approved Picnic table is required. Need men's and women's outside doors and frames swapped to obtain 18" (min) clear at interior lock sides of doors. Need to remove 4" block urinal screens for handicapped access to urinals. Install new baked enamel screens and retile. Need 30" (min.) clear.	\$ 7,530.00	9/30/2012 Material for Doors and Urinal Screen on order.
Eldorado Welcome Center	Welcome center is presently ADA compliant		

	DISTRICT 8 REST AREAS AND WELCOME CENTERS		
Big Piney Rest Area EB	Flush valves (toilets) need to be readjusted. Handicap accessibility parking spaces need repainting		9/30/2012
Big Piney Rest Area WB	Flush valves (toilets) need to be readjusted. Handicap accessibility parking spaces need repainting.		9/30/2012
	DISTRICT 9 REST AREAS AND WELCOME CENTERS		
Harrison Welcome Center	Flush valves (toilets) need to be readjusted. One ADA approved picnic table is required.	\$ 1,000.00	9/30/2012
Bella Vista Welcome Center	Flush valves (toilets) need to be readjusted. Handicap accessibility parking spaces need repainting. International Symbol of Accessibility logos need repainting. Handicap accessibility parking spaces needed. One ADA approved picnic table is required.	\$ 1,000.00	9/30/2012
Siloam Springs Welcome Center	Restroom signage needs to conform to ADA approved standards (signs must be affixed to wall next to latch or lock of door). One ADA approved picnic table is required.	\$ 1,030.00	9/30/2012
	DISTRICT 10 REST AREAS AND WELCOME CENTERS		
Imboden/Blackrock Rest Area	Restroom signage needs to conform to ADA approved standards (signs must be affixed to wall next to latch or lock of door). Handicap accessibility parking spaces needed. One ADA approved picnic table is required.	\$ 1,030.00	9/30/2012
Corning Welcome Center	Welcome Center is presently ADA compliant		
Blytheville Welcome Center	Welcome Center is presently ADA complaint		
Total Cost of Updates:			\$68,940.00

Nelson, Joanna P.

From: Valera.McDaniel@dot.gov
Sent: Friday, November 02, 2012 10:42 AM
To: Nelson, Joanna P.
Subject: RE: ADA Plan Implementation Update

Holy Cow!!! Everythin is complete!!! Yay!!!

No need to send this in formally. This email works great for me! I will add it to my file!

Great Job!!

Tell Ray how awesome he is for staying on top of this!!

And Welcome back to you!! :)

~V

From: Nelson, Joanna P. [Joanna.Nelson@arkansashighways.com]
Sent: Friday, November 02, 2012 11:05 AM
To: McDaniel, Valera (FHWA)
Subject: FW: ADA Plan Implementation Update

Please see the attached update on the ADA plan Implementation.

Will I need to submit this as a formal document?

Joanna P. Nelson
Section Head-E.E.O/D.B.E
AHTD
Phone: 501-569-2298
Fax: 501-569-2965

From: Gruver, Ray
Sent: Wednesday, October 24, 2012 3:48 PM
To: Nelson, Joanna P.
Subject: RE: ADA Plan Implementation Update

Hi Joanna:

Attached is the ADA Plan/Schedule of improvements needed to be in ADA compliance.
After you have had time to review the plan, if you would like, we can go over it in detail.
Thanks

From: Nelson, Joanna P.
Sent: Wednesday, October 24, 2012 2:00 PM
To: Gruver, Ray
Subject: ADA Plan Implementation Update
Good afternoon Ray,

I wanted to follow up with you based on our recent conversation about the implementation of the revised ADA plan.

Do you know when you would have the update available?

Thank you

Joanna P. Nelson
Section Head-E.E.O/D.B.E
AHTD
Phone: 501-569-2298
Fax: 501-569-2965