



**Lorie Tudor, P.E.**  
Director

**Greenbrier Town Hall  
Meeting  
April 28, 2022**





# Arkansas Department of Transportation

## Arkansas State Highway Commission

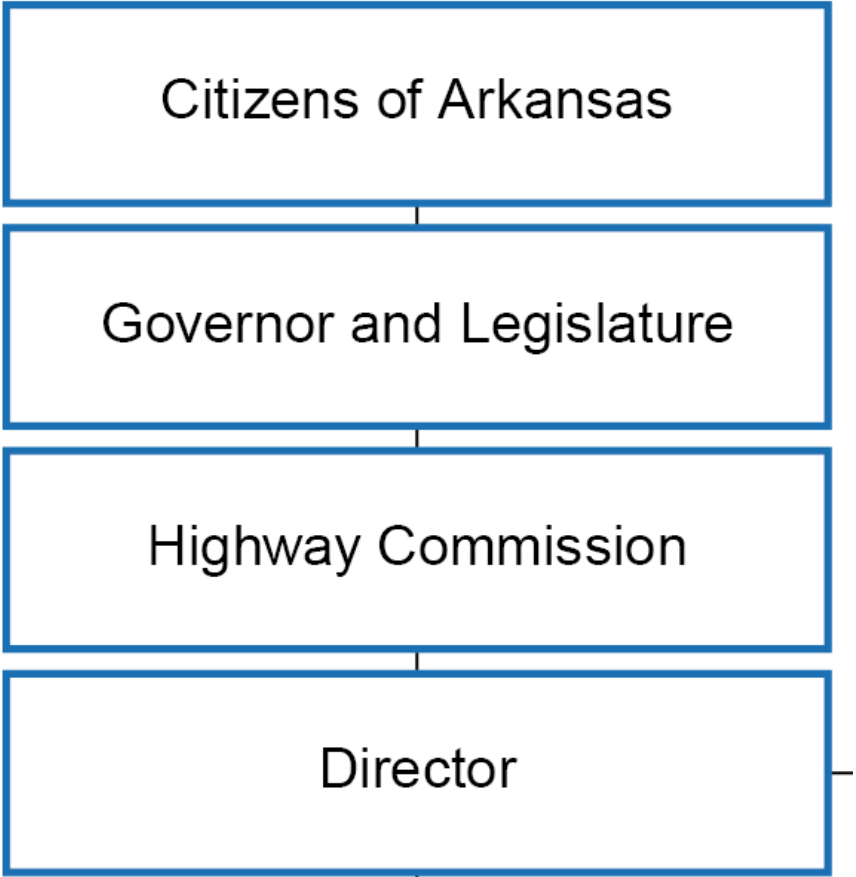
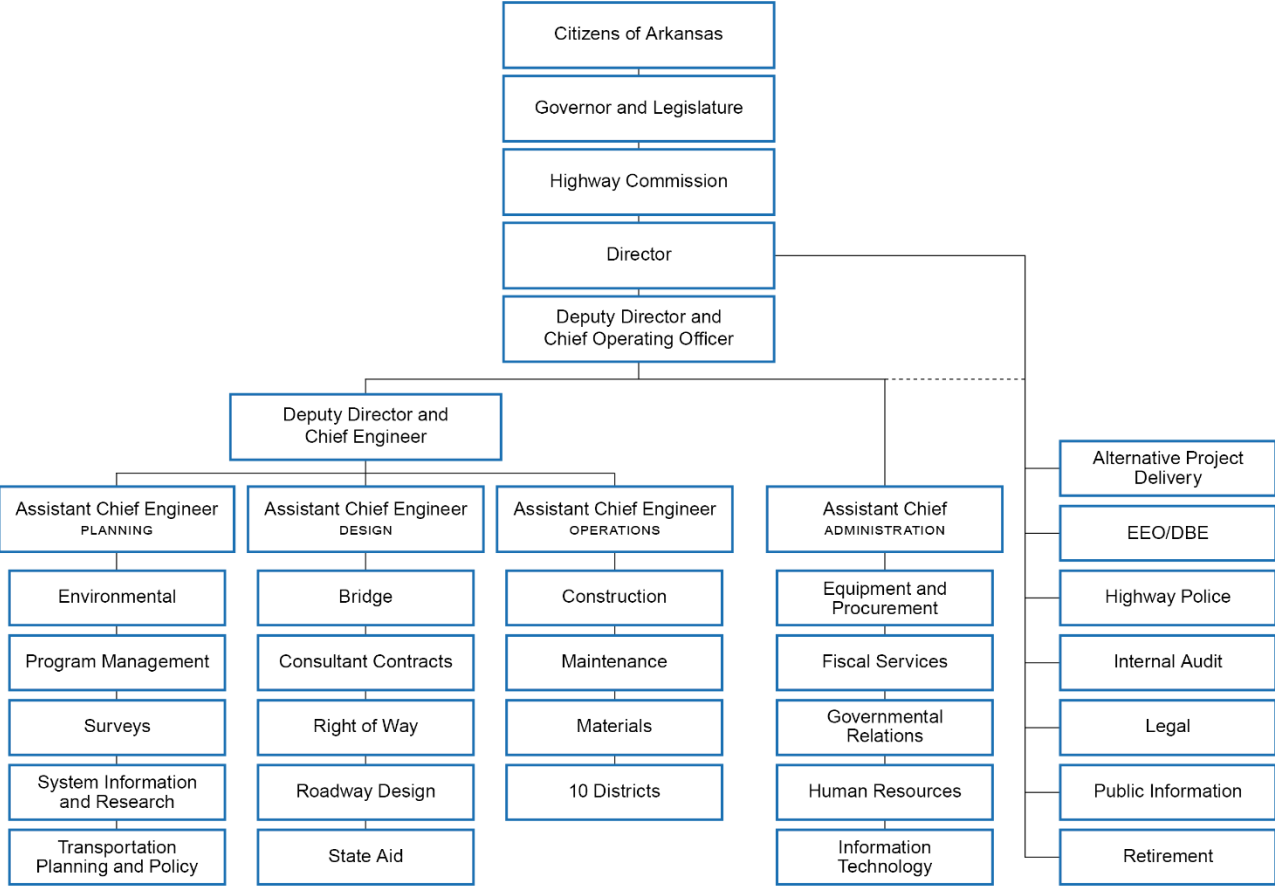




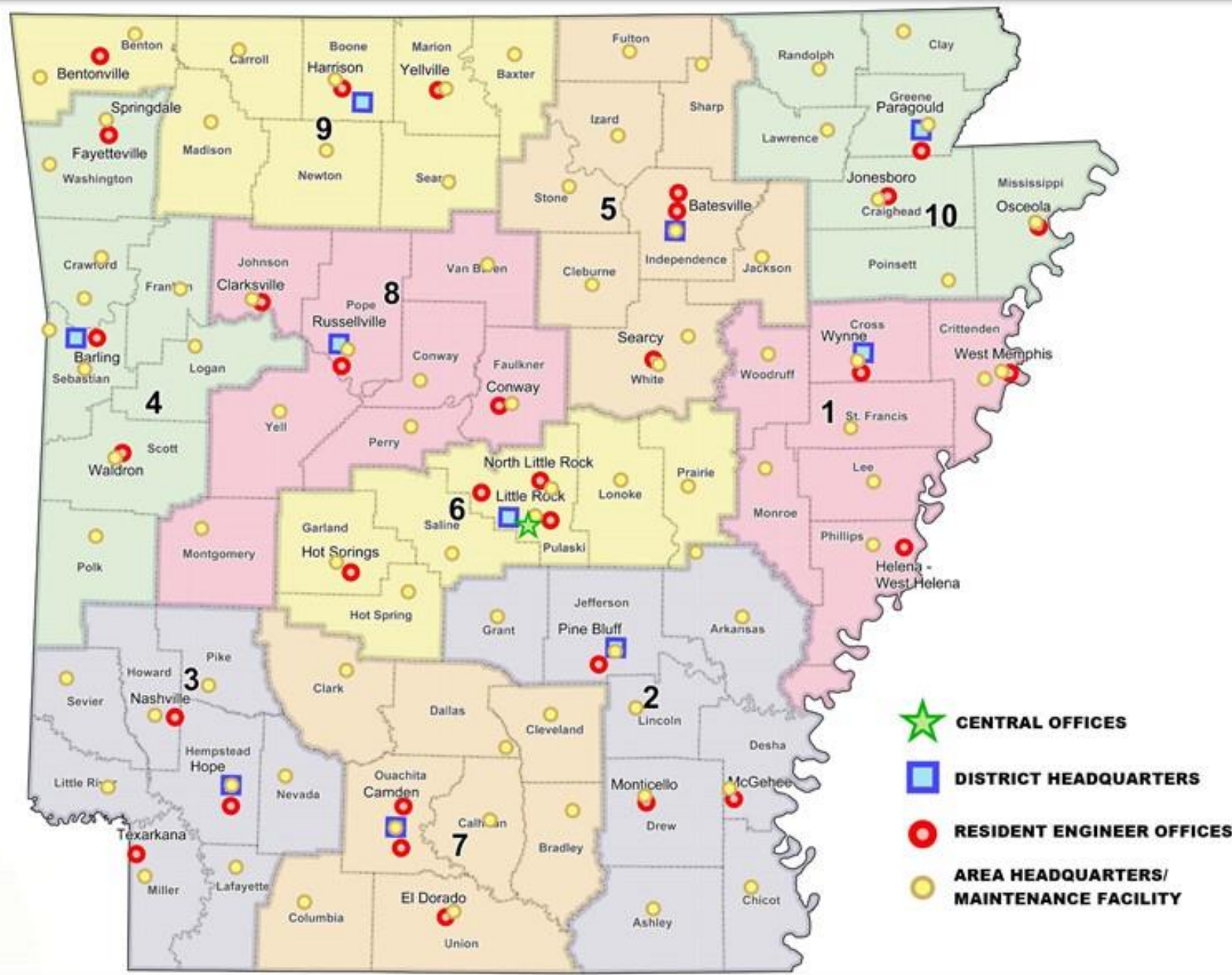
# ARDOT Quick Facts

- 3rd Largest State Agency
- Approximately 3,700 Employees
- Maintain 16,418 miles of Highway and 7,335 Bridges
- Central Offices in Little Rock
- 10 Districts Statewide

# ARDOT Organization Chart







-  **CENTRAL OFFICES**
-  **DISTRICT HEADQUARTERS**
-  **RESIDENT ENGINEER OFFICES**
-  **AREA HEADQUARTERS/ MAINTENANCE FACILITY**

**Marie Holder**

**Keith Gibson**



**Philip Taldo**

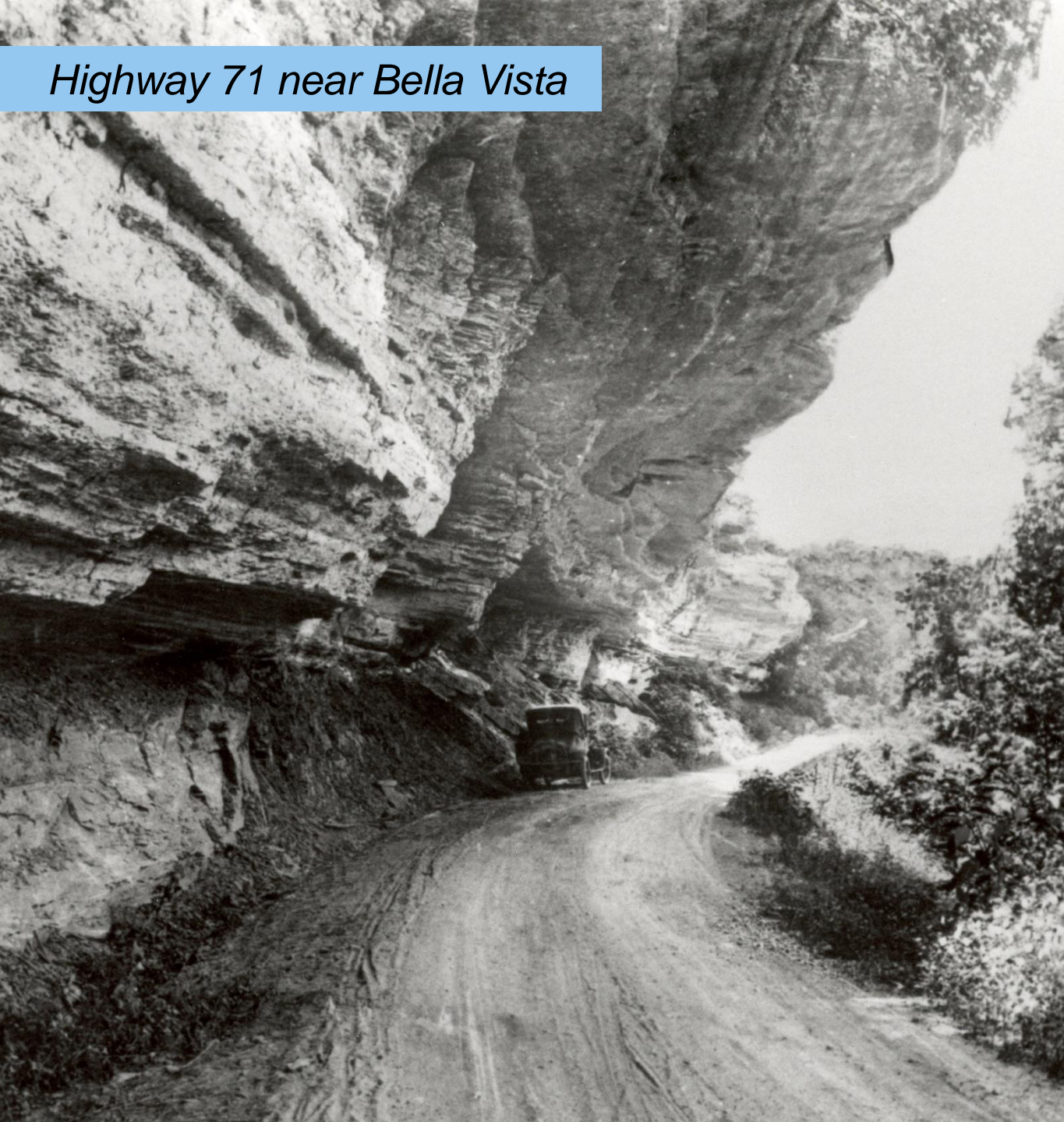
**Robert Moore**  
**Chairman**

**Alec Farmer**  
**Vice-Chairman**





## *Highway 71 near Bella Vista*

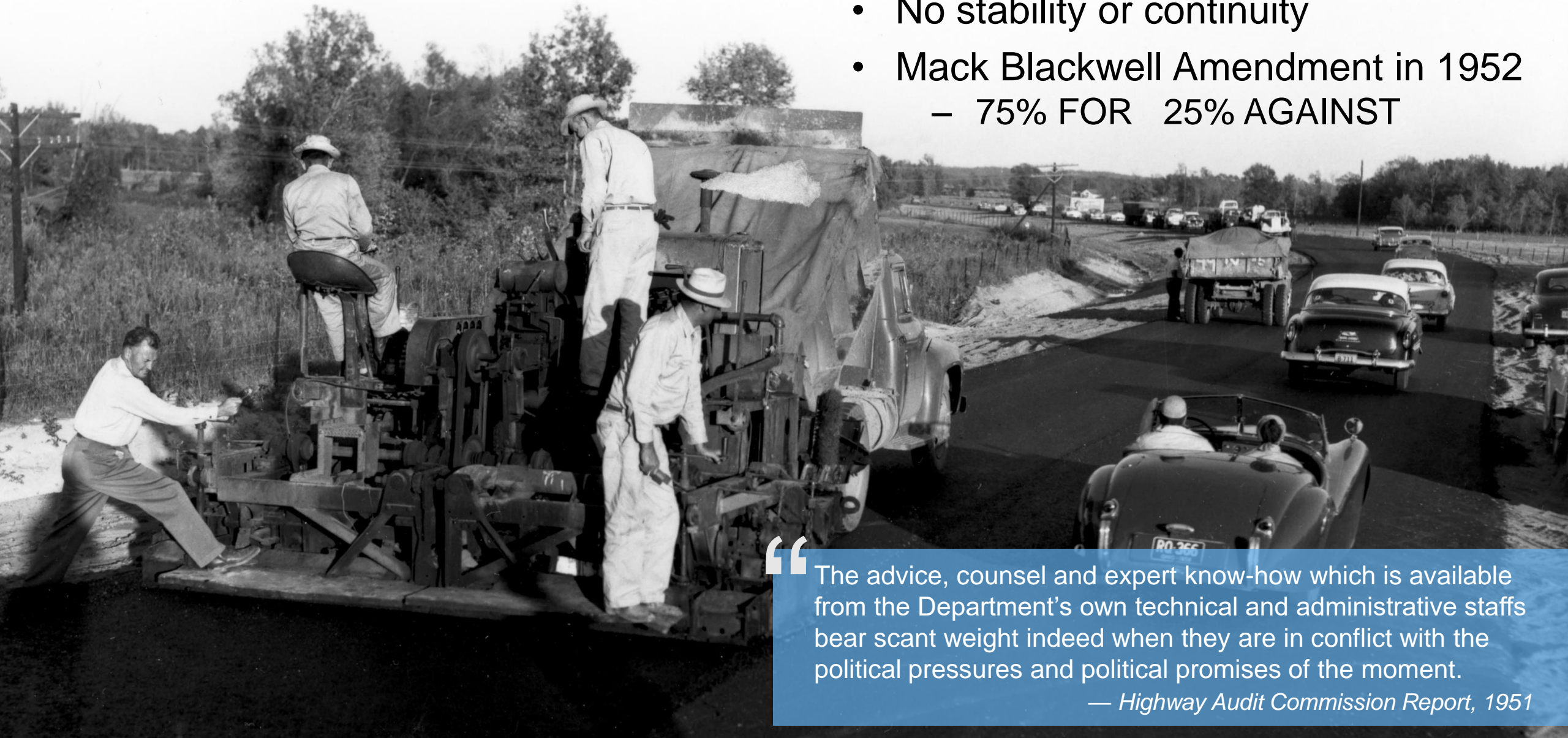


- First Commission created
  - No Highway Department
  - No Highway System
- 3,600 Vehicles
- \$72,000 total budget



## Widening Hwy 67 near Malvern, 1956

- Nine Legislative Acts restructured Commission since 1913
- No stability or continuity
- Mack Blackwell Amendment in 1952
  - 75% FOR 25% AGAINST



“ The advice, counsel and expert know-how which is available from the Department's own technical and administrative staffs bear scant weight indeed when they are in conflict with the political pressures and political promises of the moment.

— Highway Audit Commission Report, 1951



- *1<sup>st</sup> State to Complete its Interstate System (1975)*
- *1985 – Rural Road Program – out of the mud*
- *1991 – Highway Improvement Program*
- *1999 – Interstate Rehabilitation Program – First Highway Bond Issue in 50 years*
- *2011 – 2<sup>nd</sup> Interstate Rehabilitation Program*
- *2012 – Connecting Arkansas Program*
- *2020 – Renew Arkansas Highways Program*





## TRANSPORTATION GOVERNANCE AND FINANCE

A 50-State Review of State Legislatures  
and Departments of Transportation

November 2016

Structure	# of States
Governed by State Transportation Boards, Councils, and Commissions	29
Appointment of DOT Leader By Board, Council or Commission	9
Appointments to State Transportation Boards, Councils and Commissions by the Governor with Legislative Approval	22









# Funding



# Funding

**01**

**½ cent Sales Tax  
Funds**

**02**

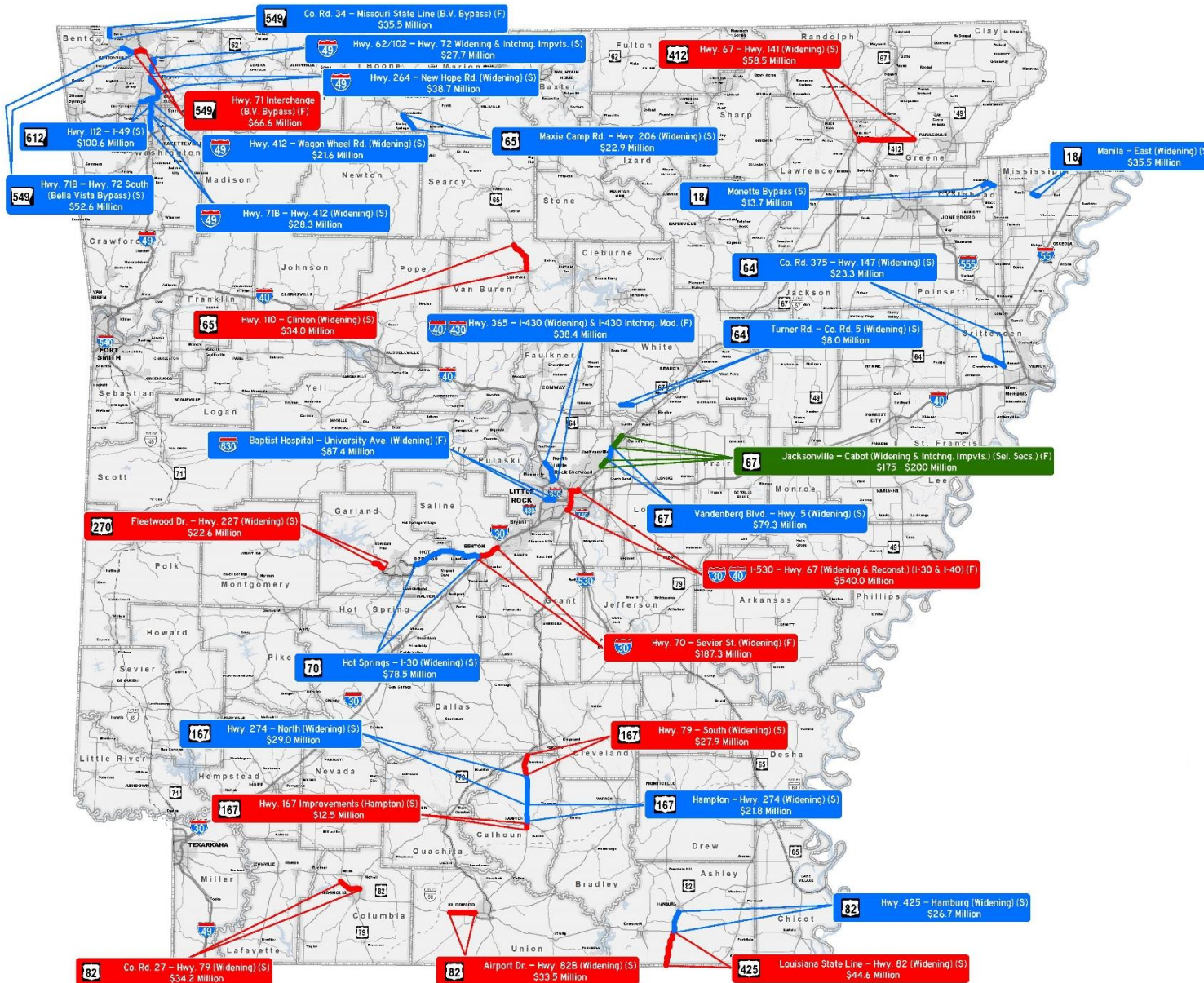
**Regular State  
Funds**

**03**

**Federal  
Funds**



# 2012 Connecting Arkansas Program



## Completed

19 Projects  
94 Miles  
\$770 Million

## Under Construction

11 Projects  
69 Miles  
\$1,061 Million

## Scheduled

1 Projects  
5 Miles  
\$175-200 Million

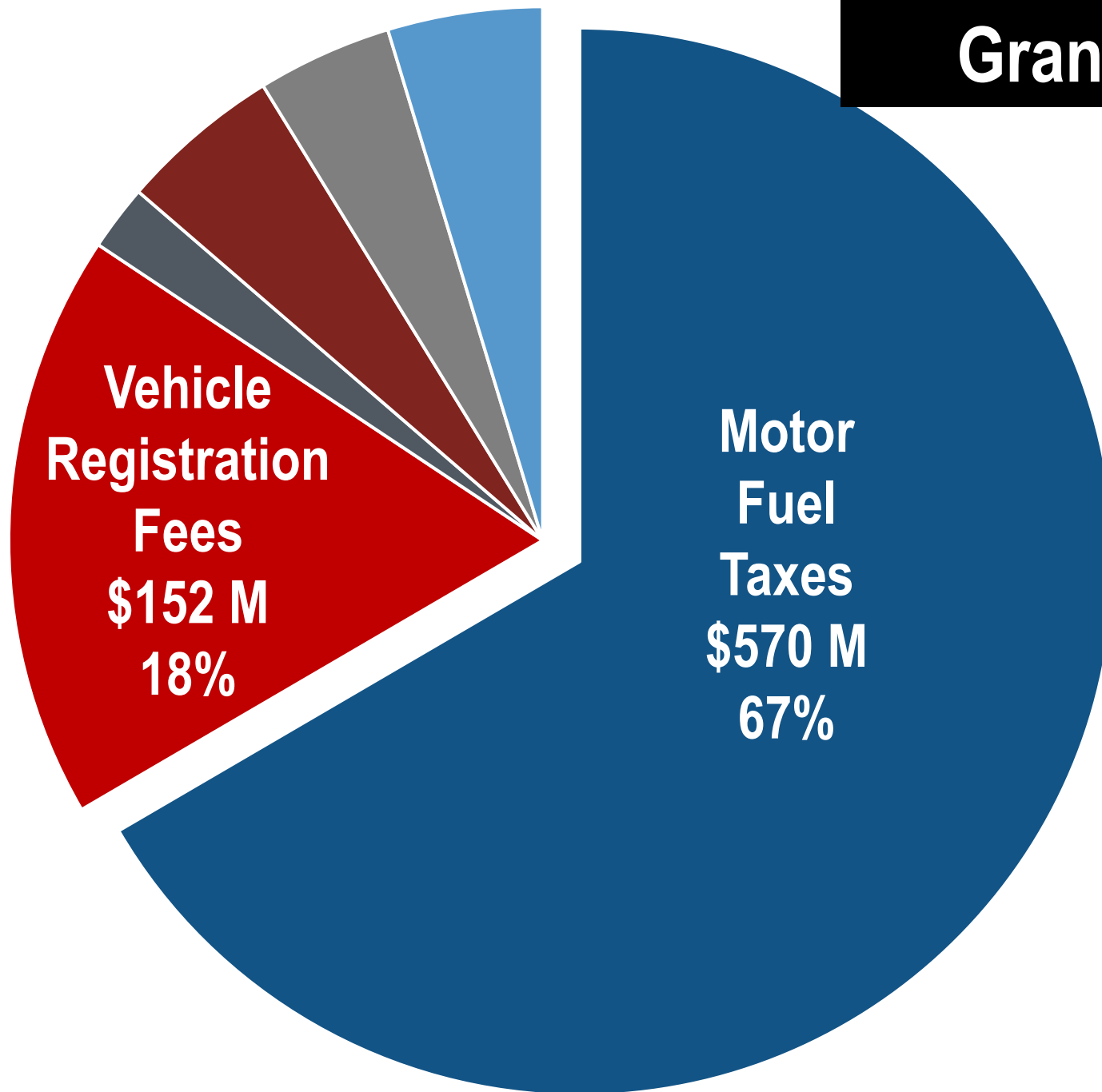


# Connecting Arkansas Program 1



# Regular State Transportation Funds

## State Fiscal Year 2021



**Grand Total = \$856 Million**

**Natural Gas**  
**\$17 M - 2%**

**Act 1**  
**\$42 M - 5%**

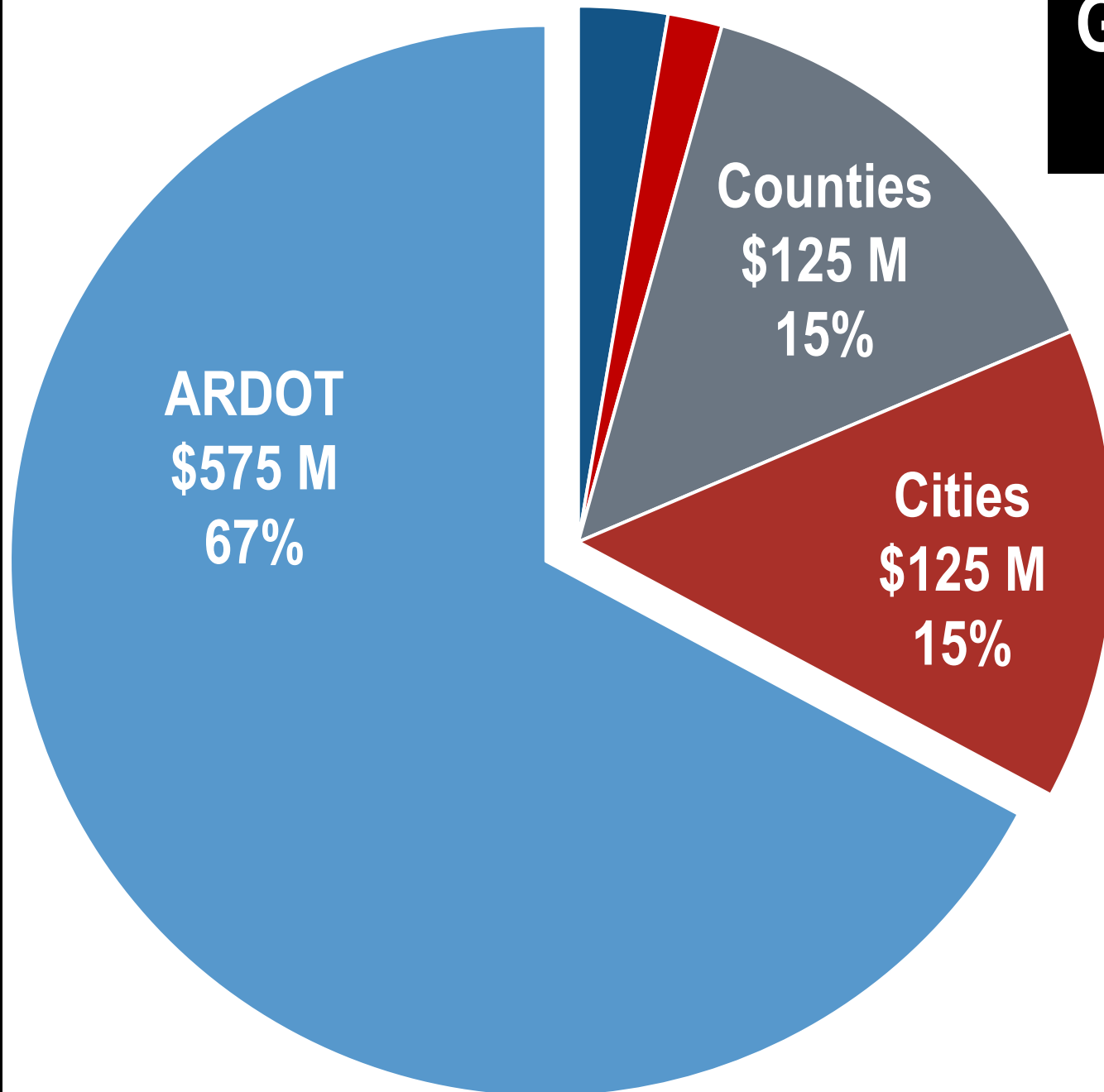
**Casino Revenue**  
**\$35 M - 5%**

**Other**  
**\$40 M - 5%**



# Regular State Transportation Funds

## State Fiscal Year 2021



**Grand Total = \$856 Million**  
**ARDOT = \$575 Million**

**Constitutional  
and Fiscal  
Agencies  
\$23 M - 3%**

**Other  
\$8 M - 1%**

# Public Road Mileage and Traffic

Public Road Mileage and Traffic

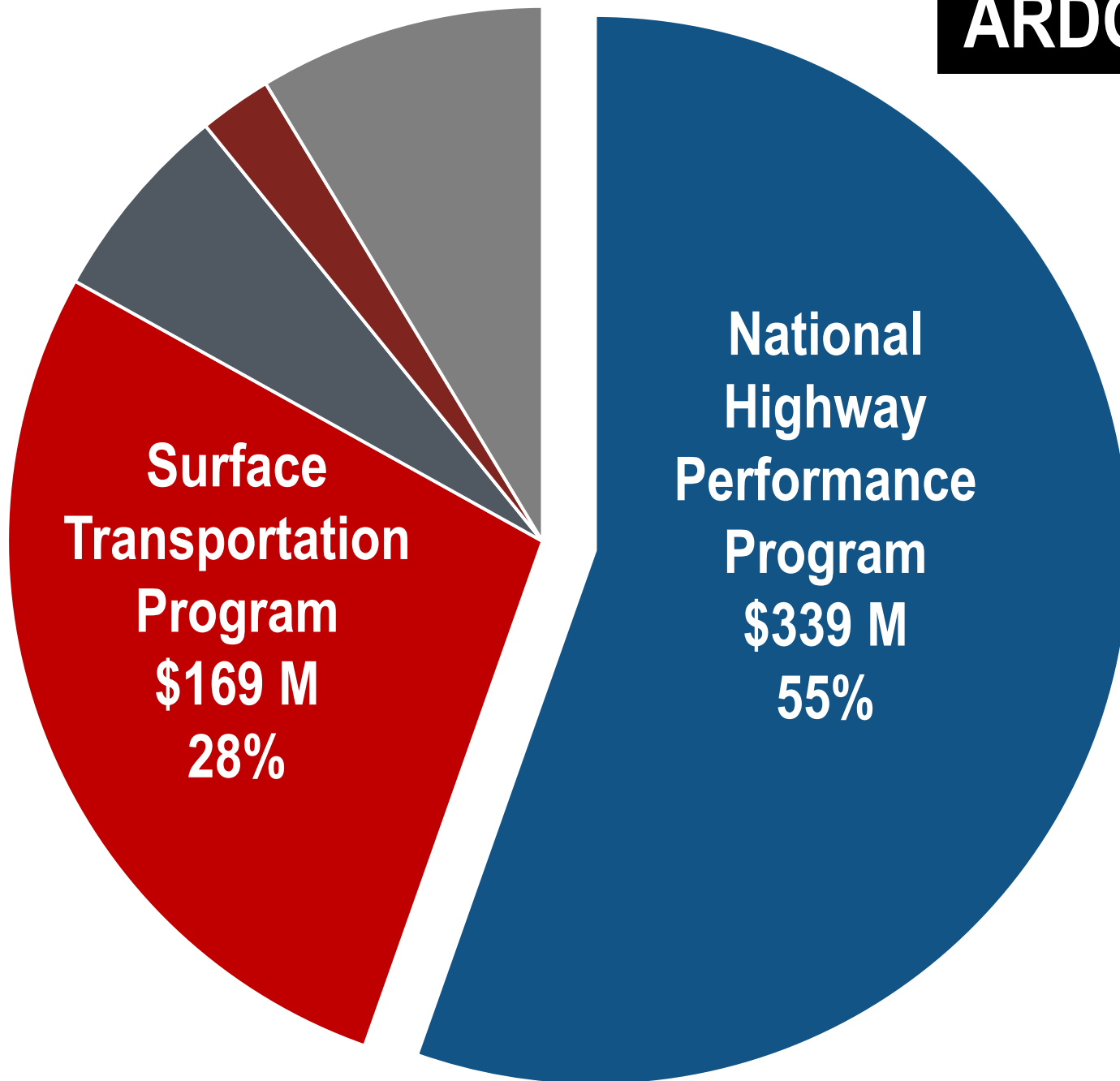
System	Miles	Percentage of Miles	Percentage of Traffic
State Highways	16,451	16%	73%
County Roads	68,619	67%	10%
City Streets	17,534	17%	17%
Total	102,604		





# Federal Highway Funds

## Federal Fiscal Year 2021



**ARDOT Total = \$611 Million**

**Highway Safety  
Improvement Program**  
\$37 M - 6%

**Congestion Mitigation  
and Air Quality**  
\$13 M - 2%

**Other**  
\$53 M - 9%

# Estimated Average Annual Construction Funds Fiscal Year 2021

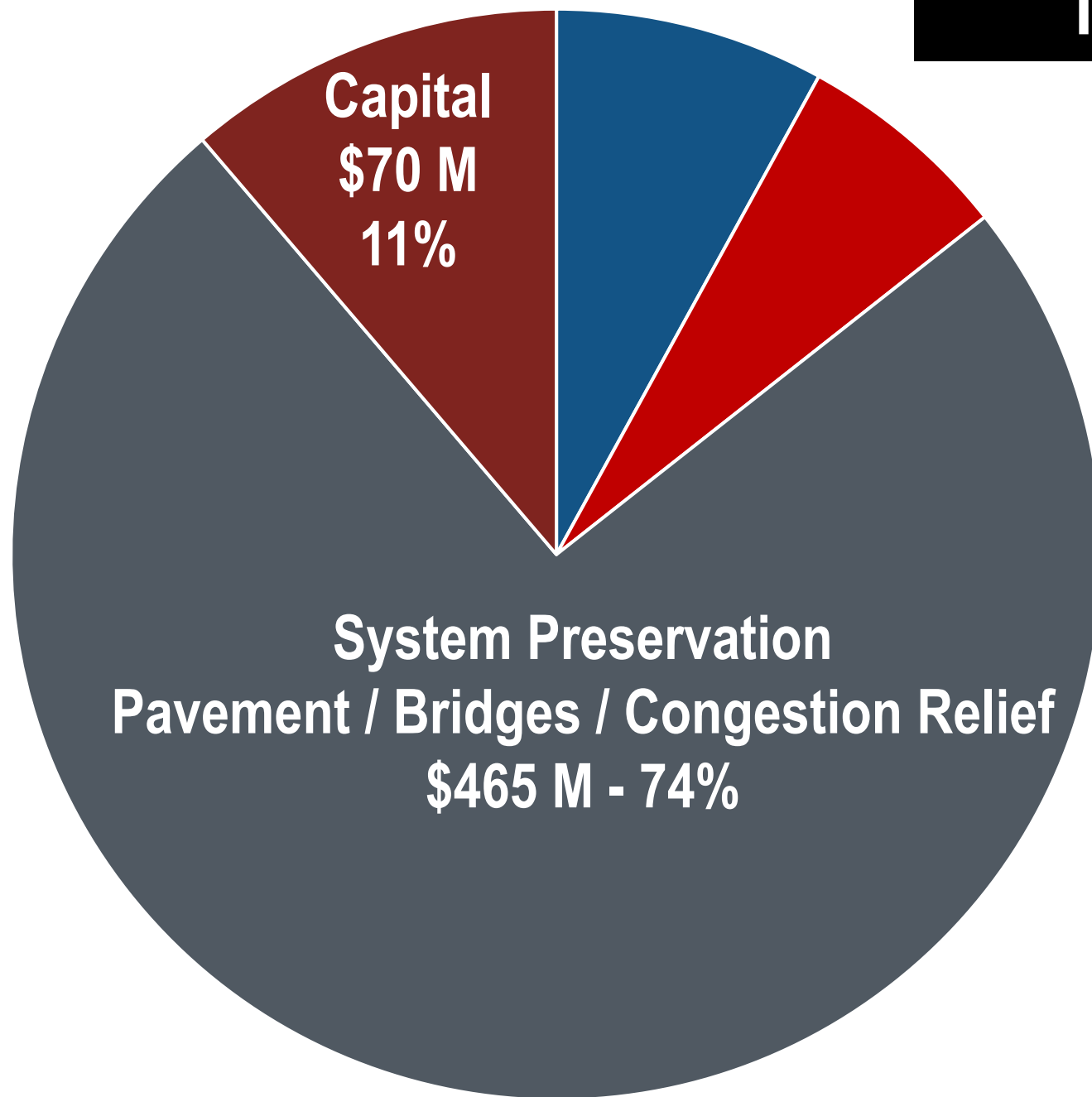
Federal Funds (Estimated Revenue from FAST) .....	\$ 611 million
State Highway Funds (Estimated Revenue 2021).....	\$ 575 million
<hr/>	
Total Federal and State Highway Funds.....	\$ 1,186 million
<b>Less Federal Funds for:</b>	
Fixed Budgeted Expenditures (Maintenance, Administration and Operations) .....	\$34.3 million
Non-AHTD Projects (Transportation Alternatives, Counties, Cities, Urban Attributable, Metro Planning) .....	\$52.7 million
Non-Construction Programs (Statewide Planning & Research) .....	\$11.5 million
Right-of-Way, Utilities .....	\$25.0 million
Obligation Limitation .....	\$25.0 million
Total Reduction - Federal Funds	(\$ 149) million
<b>Less State Funds for:</b>	
Fixed Budgeted Expenditures (Maintenance, Administration and Operations) .....	\$342.6 million
State Match for Non-Construction Programs (State Planning & Research) .....	\$1.0 million
Total Reduction - State Funds	(\$ 344) million
<b>Less Federal and State Funds for IRP Commitment:</b>	
National Highway Performance Program Funds.....	\$50.0 million
4¢ Diesel Fuel Tax.....	\$17.0 million
Total Reduction - Federal and State Funds for IRP Commitment	(\$ 67) million
<hr/>	
Total Federal and State Funds Available for Highway Construction.....	\$ 626 million



**\$ 626,000,000**



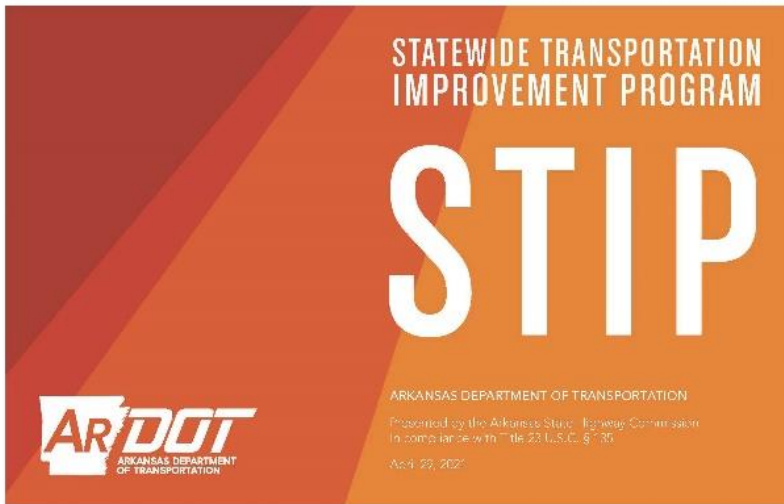
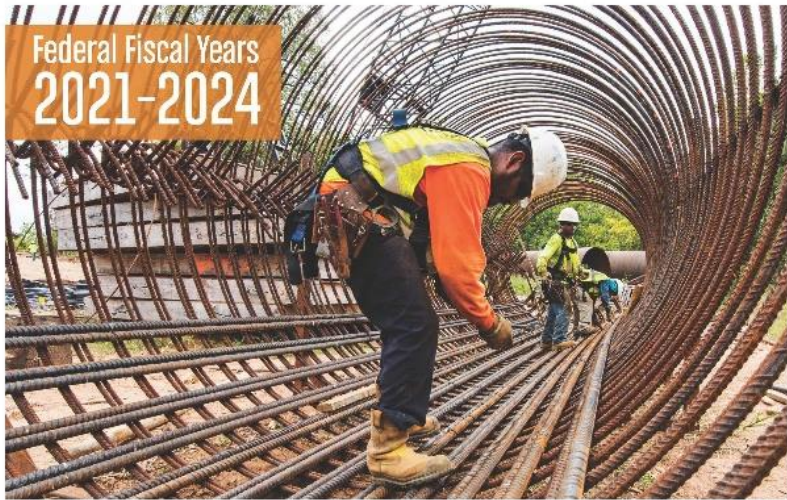
**Construction Funding Distribution  
Fiscal Year 2021**



**Total = \$626 Million**

**Interstate**  
**\$50 M - 8%**

**Safety**  
**\$40 M – 6%**

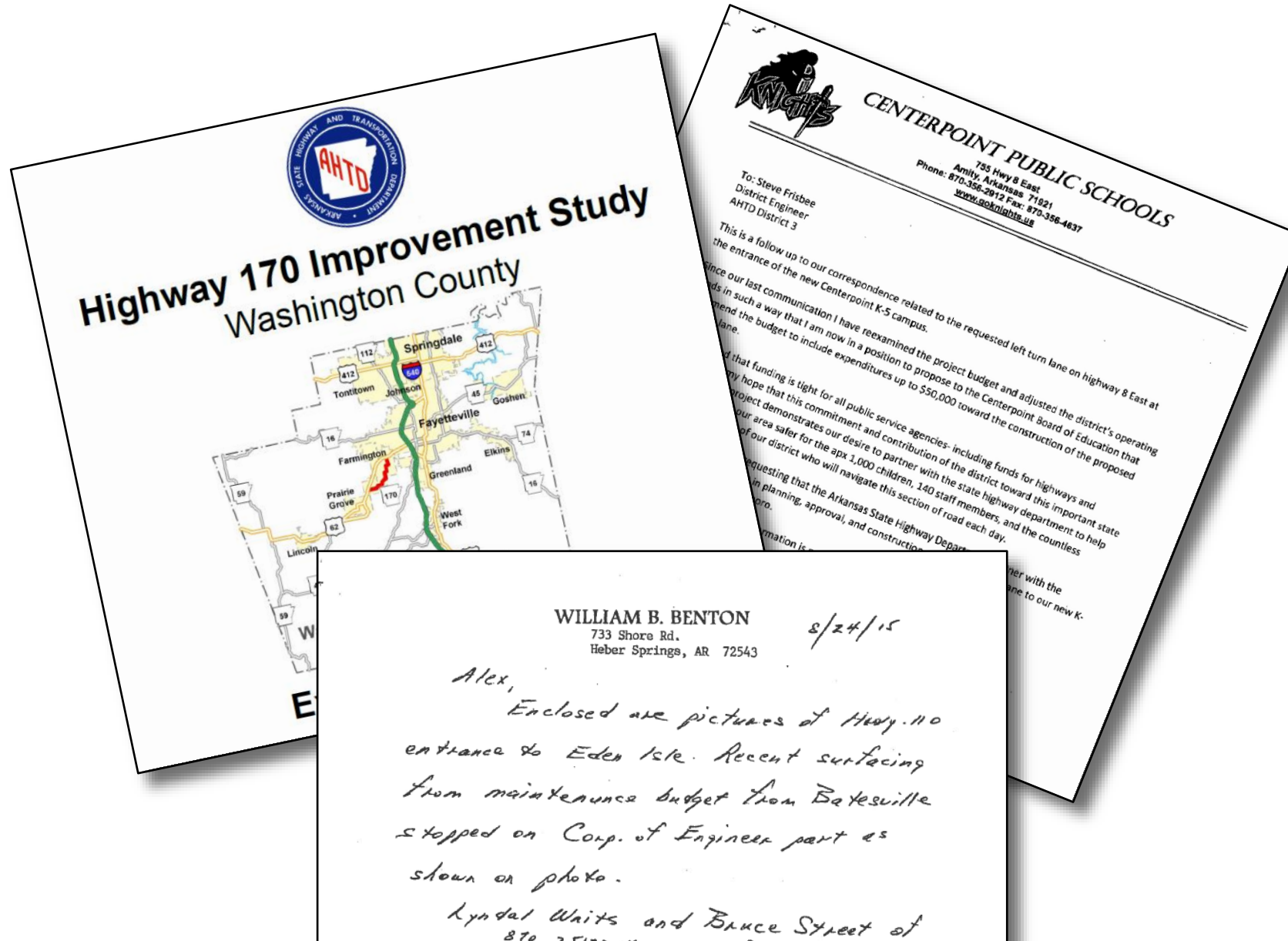


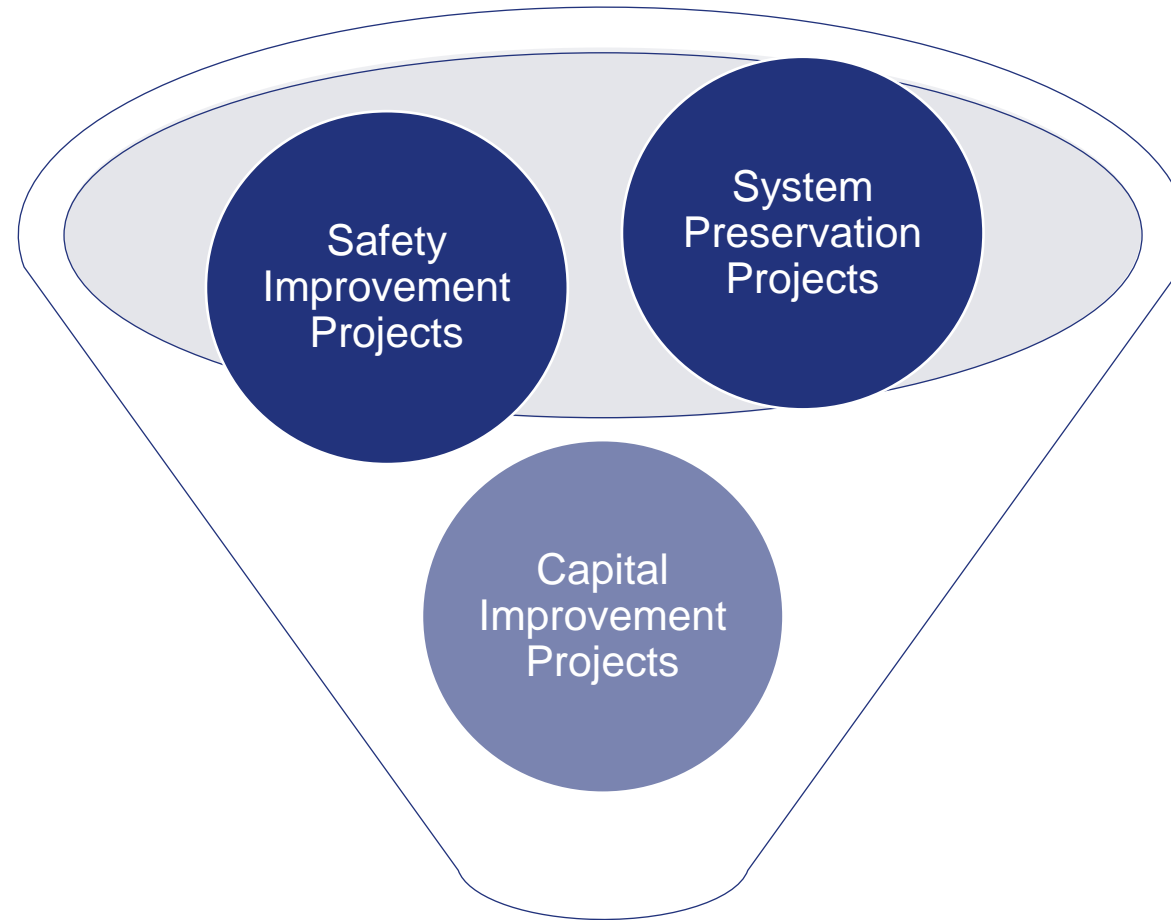
- Statewide Transportation Improvement Program
- Federal Requirement
- Financial Constraint
- Development Supports:
  - Public Transparency
  - Consultation with Transportation Planning Partners
  - Sound Financial Planning



# Universe of Projects

- Letters
- E-mails
- Studies
  - Safety
  - Planning or Corridor
- Pavement needs
- Bridge needs



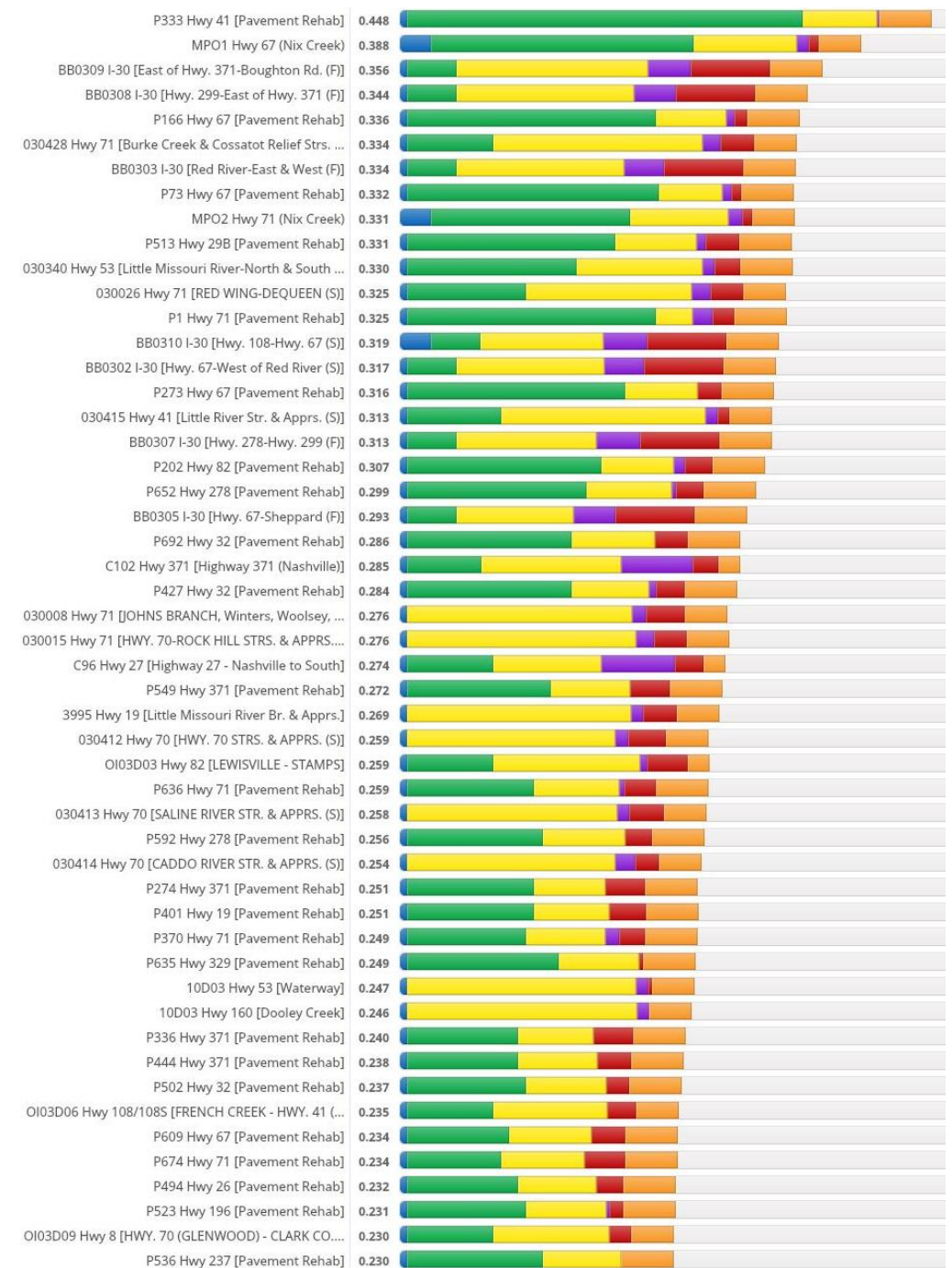


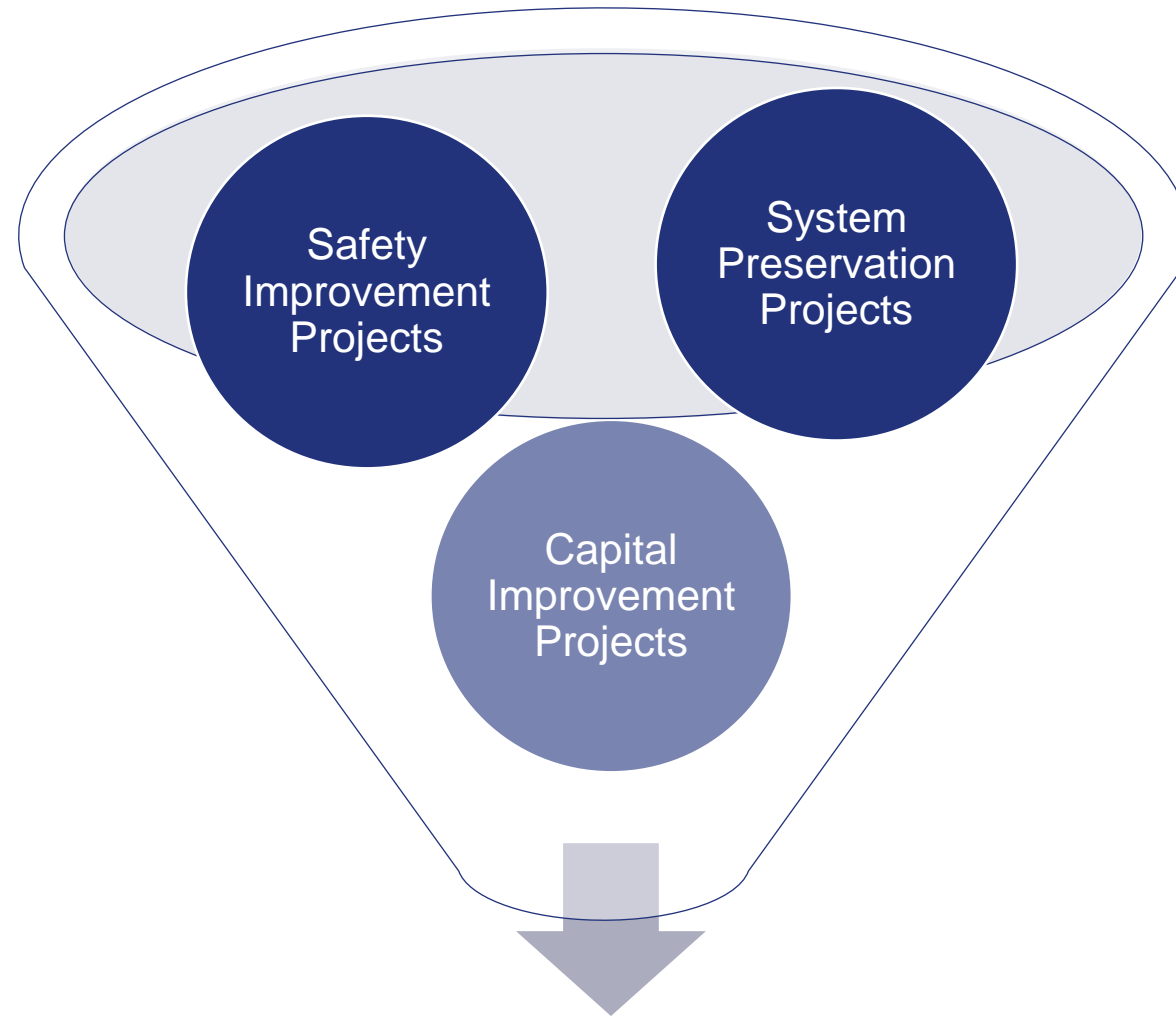
# Universe of Projects



# Project Prioritization

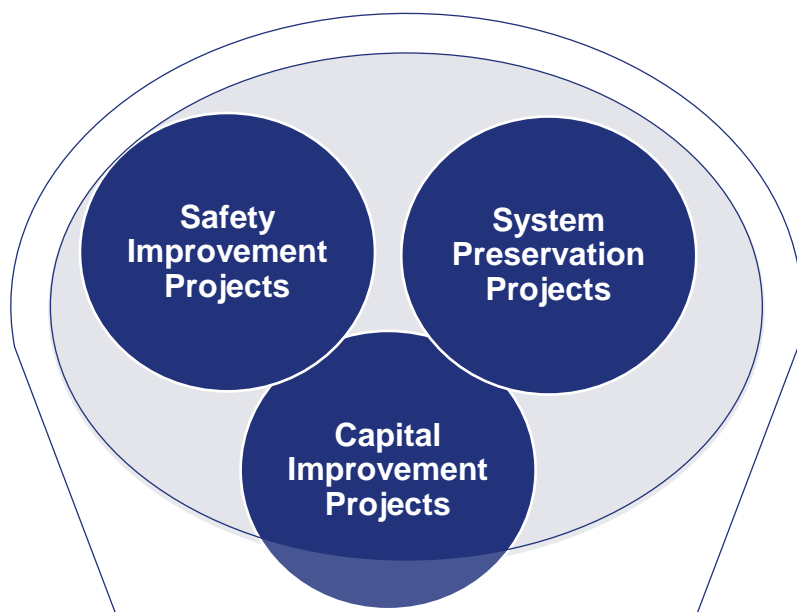
- Decision Lens software package
  - Data-Driven Decision Process
  - Increased Confidence
  - Transparent Evaluation
  - Ranks Projects Based on Criteria
- Ranked nearly 2,000 projects for current STIP



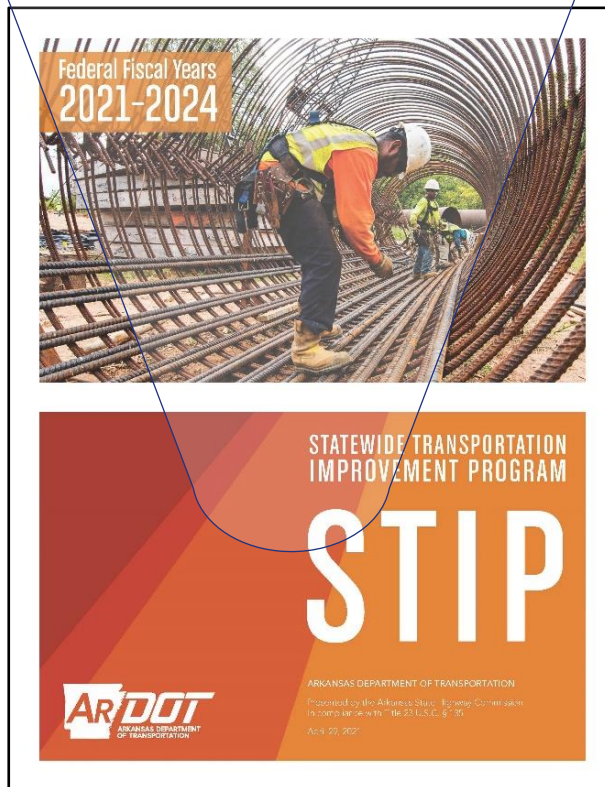


**Prioritized within the Funding Available  
\$626 Million**





- Statewide Transportation Improvement Program
- Federal Requirement
- Financial Constraint
- Development Supports:
  - Public Transparency
  - Consultation with Transportation Planning Partners
  - Sound Financial Planning





## ISSUE 1

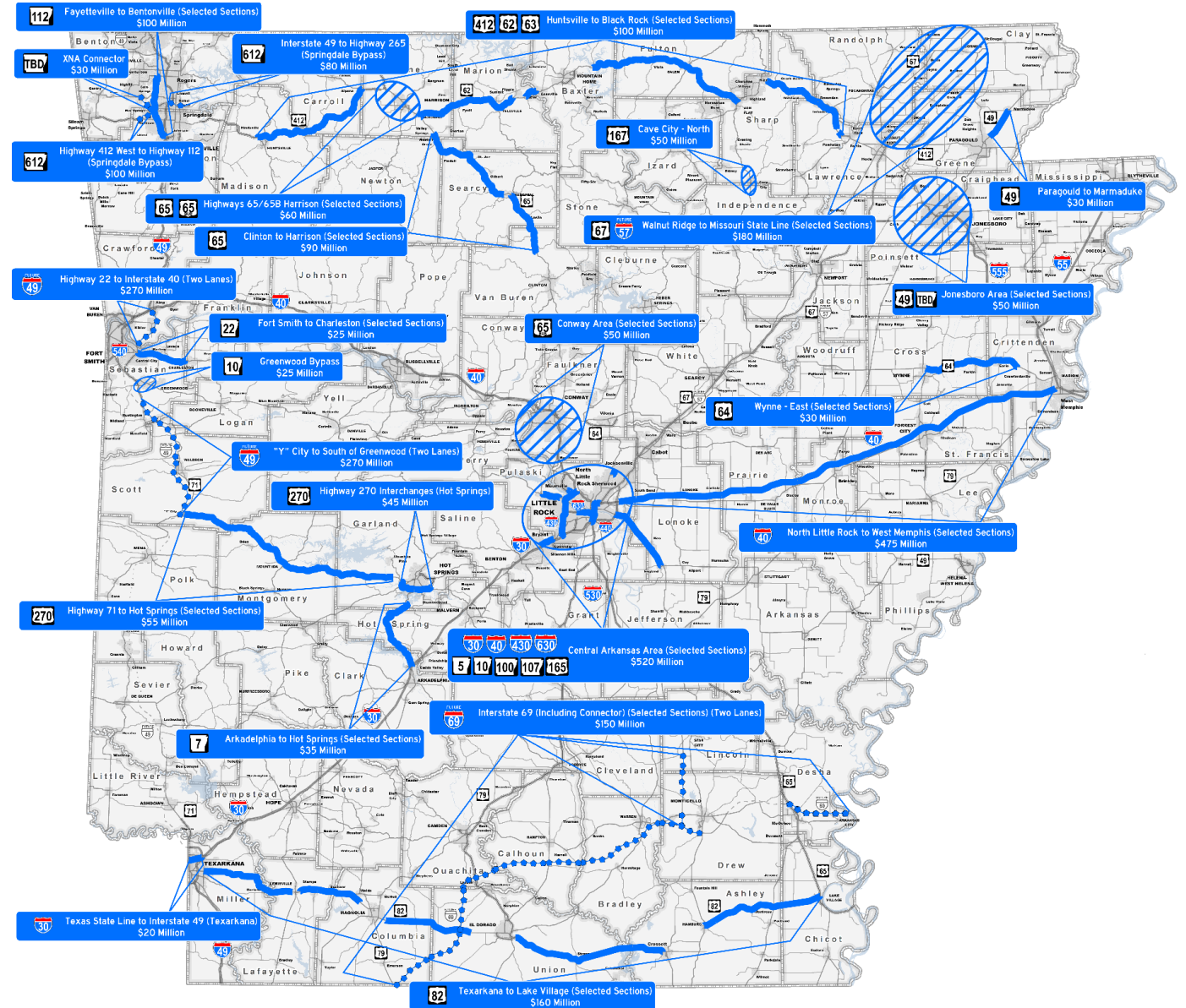
# Future Investment

- Highways, Roads, and Bridges
- 70% (\$206 M) State Highways
- 15% (\$44 M) County Roads
- 15% (\$44 M) City Streets



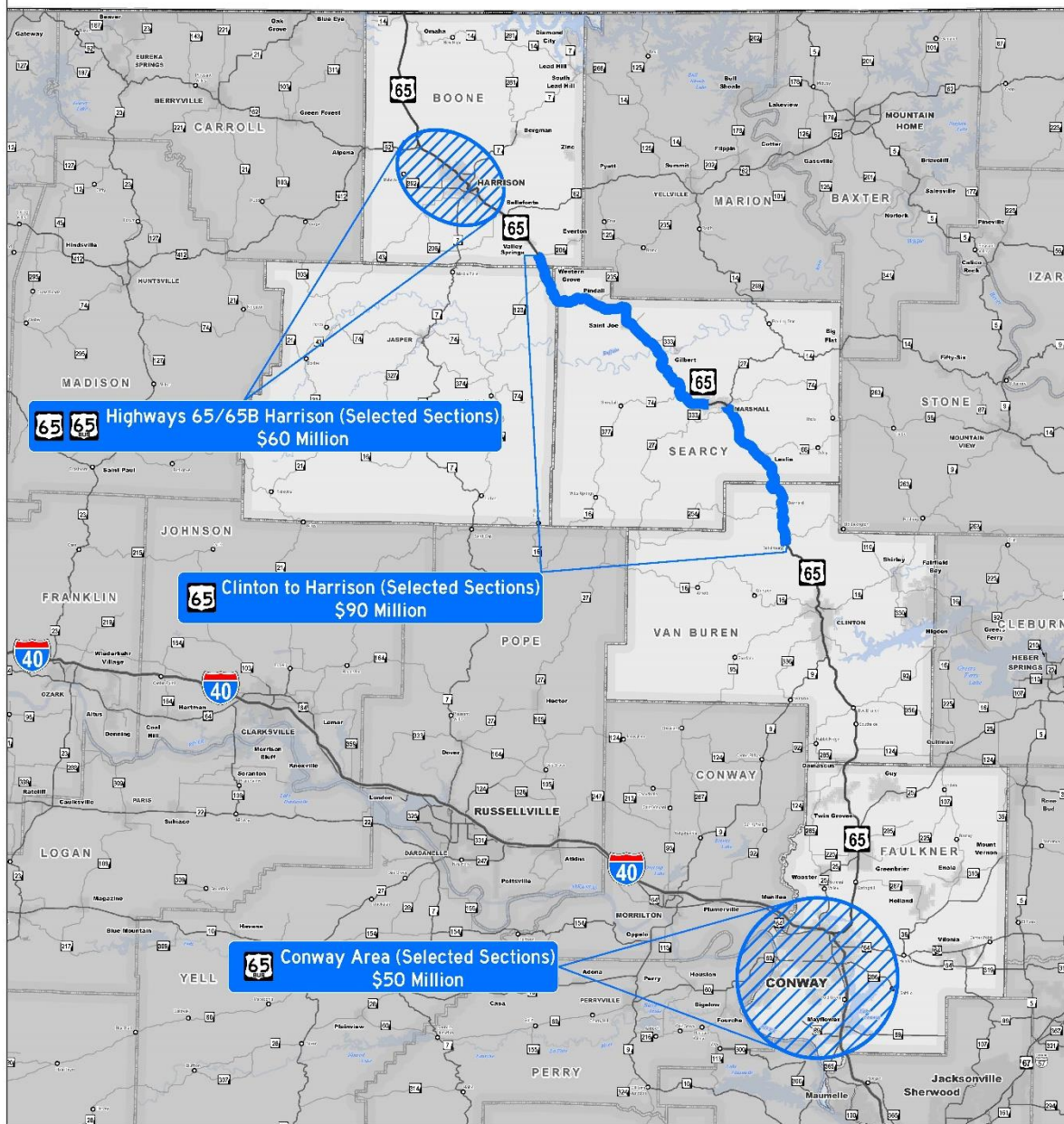
- Capital and congestion relief
- \$3.6 billion – 20 years
- July 2023

- Capital and congestion relief
- \$3.6 billion – 20 years
- July 2023



# Second Connecting Arkansas Program

- Capital and congestion relief
- Hwy. 65 - \$150 M
- Conway Area - \$50 M

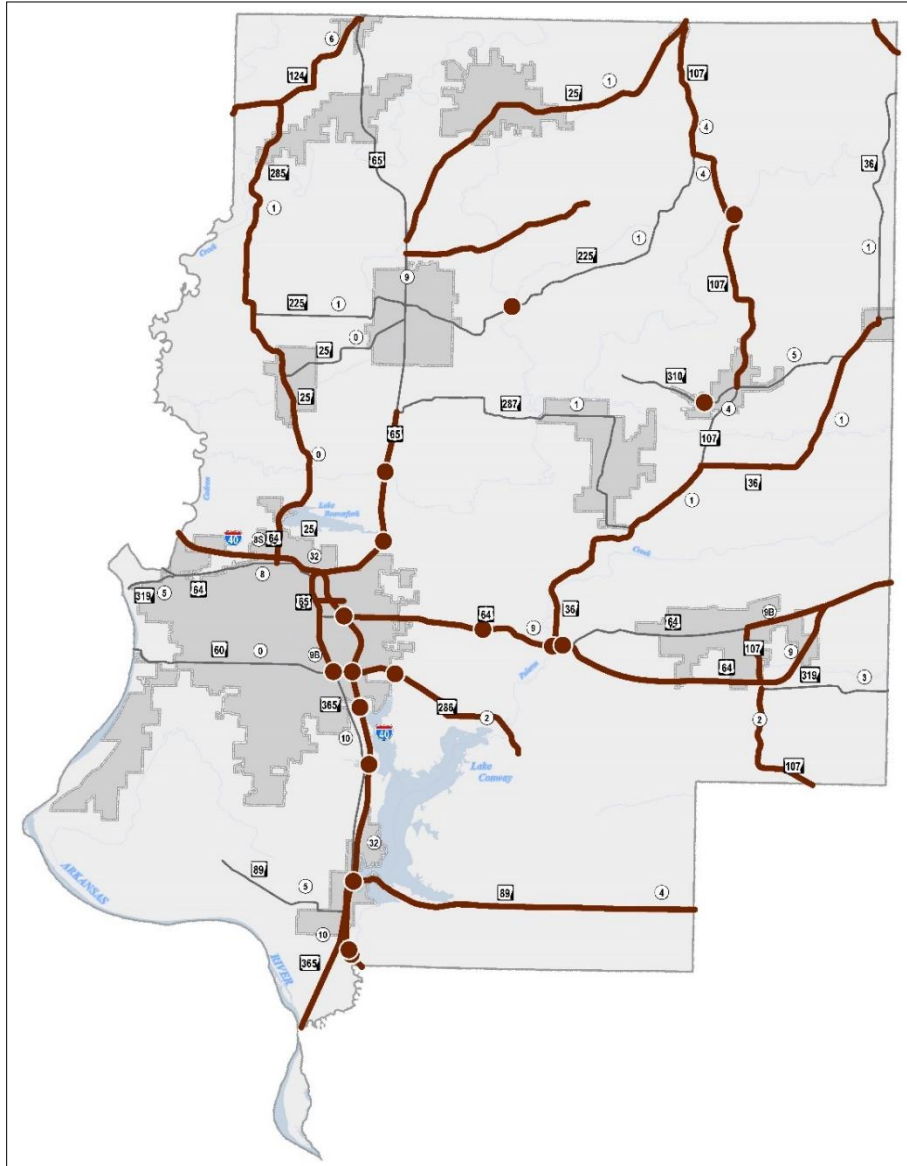






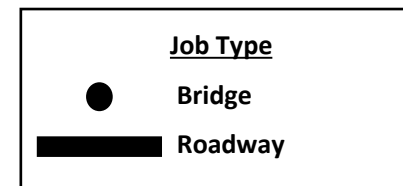
- \$5.1 Billion - 10 Years
- 7,000 Miles
- 1,100 Bridges
- July 2023

# Pavement & Bridge Preservation Projects



# Faulkner County

- **47 Projects**
- **153 Miles**
- **27 Bridges**
- **\$121 Million**



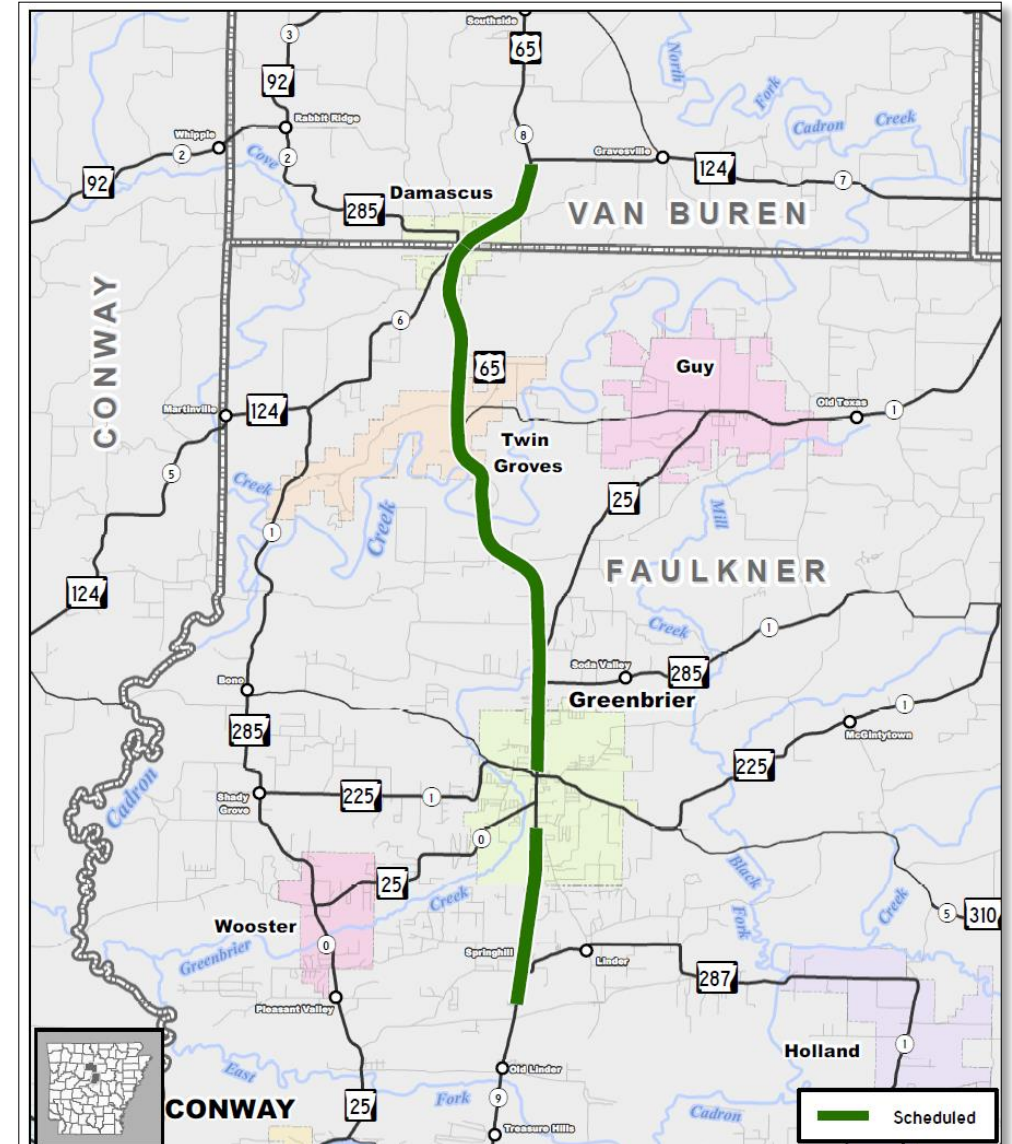




# Local Projects

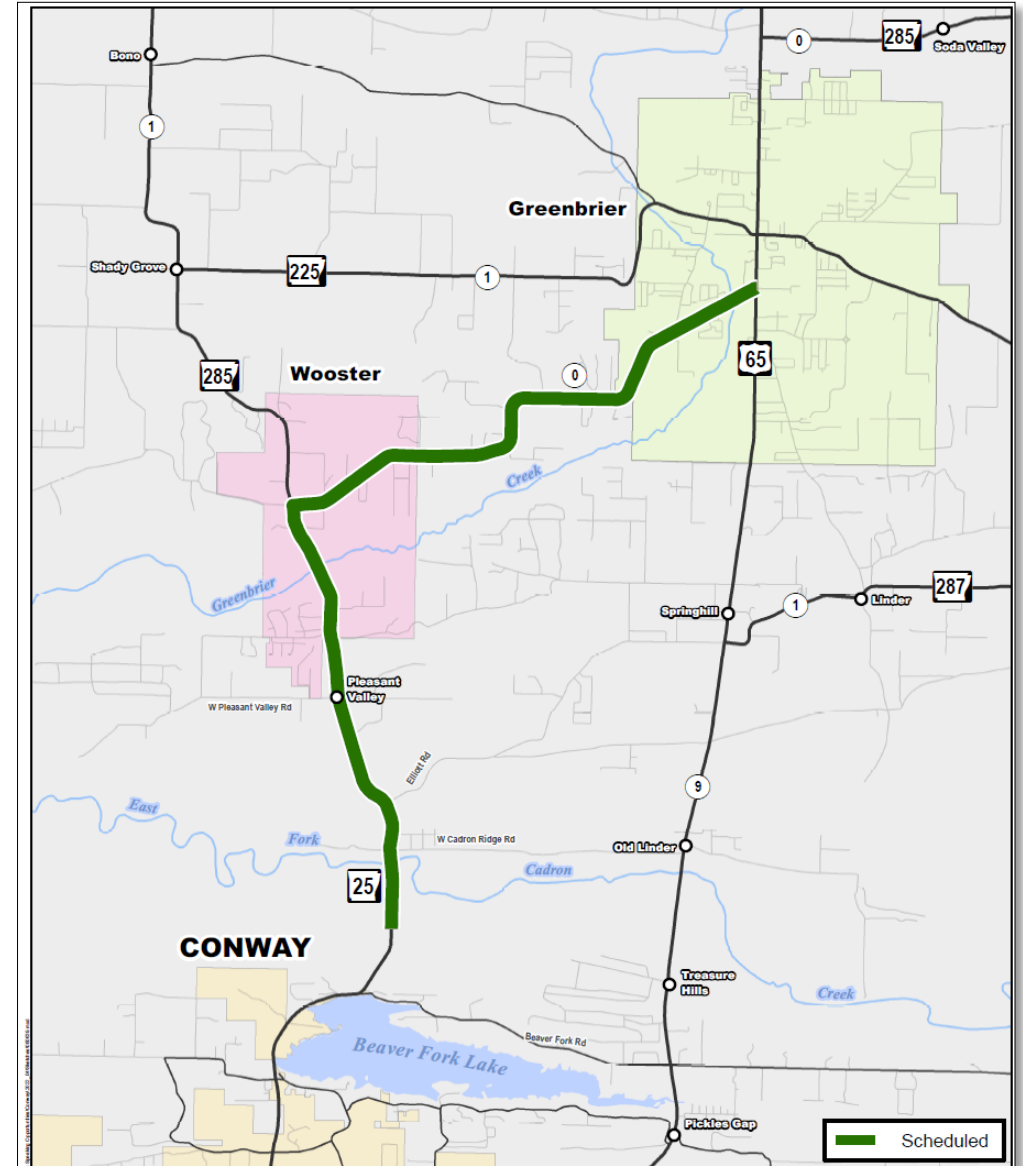
# Pavement Preservation Projects

- Pavement Preservation Job
- 15 miles
- Scheduled for June 2022



# Pavement Preservation Projects

- Pavement Presentation
- 9 miles
- Scheduled for 2023





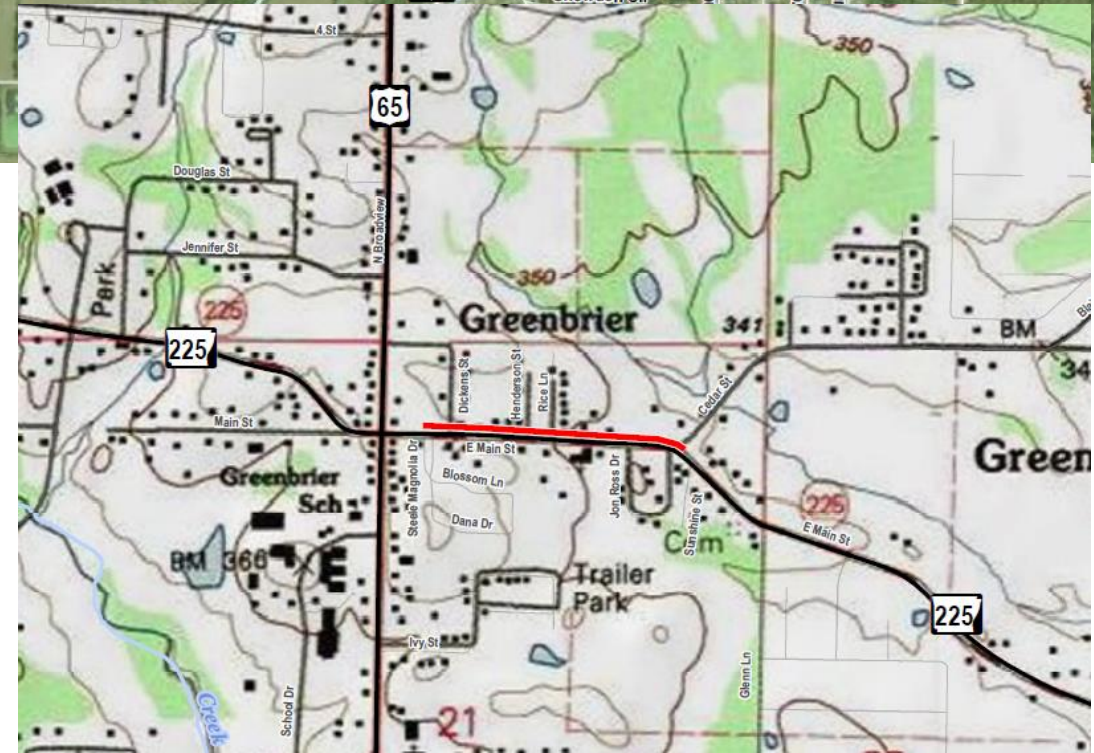
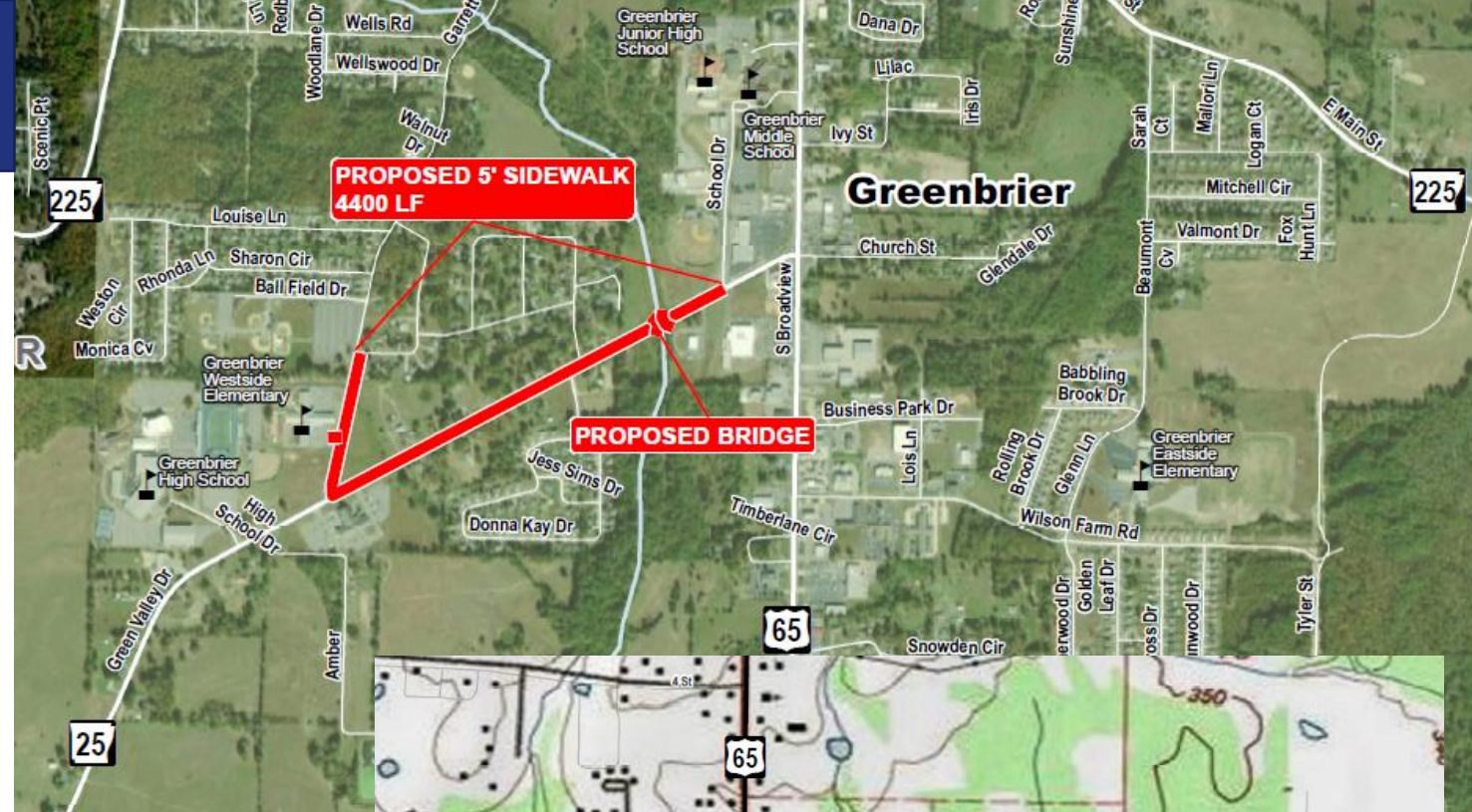
# Highways 25 & 225

## Greenbrier

- Sidewalks

### Scheduled

Projects:	2
Miles:	~1
Amount (Millions):	Est \$<1

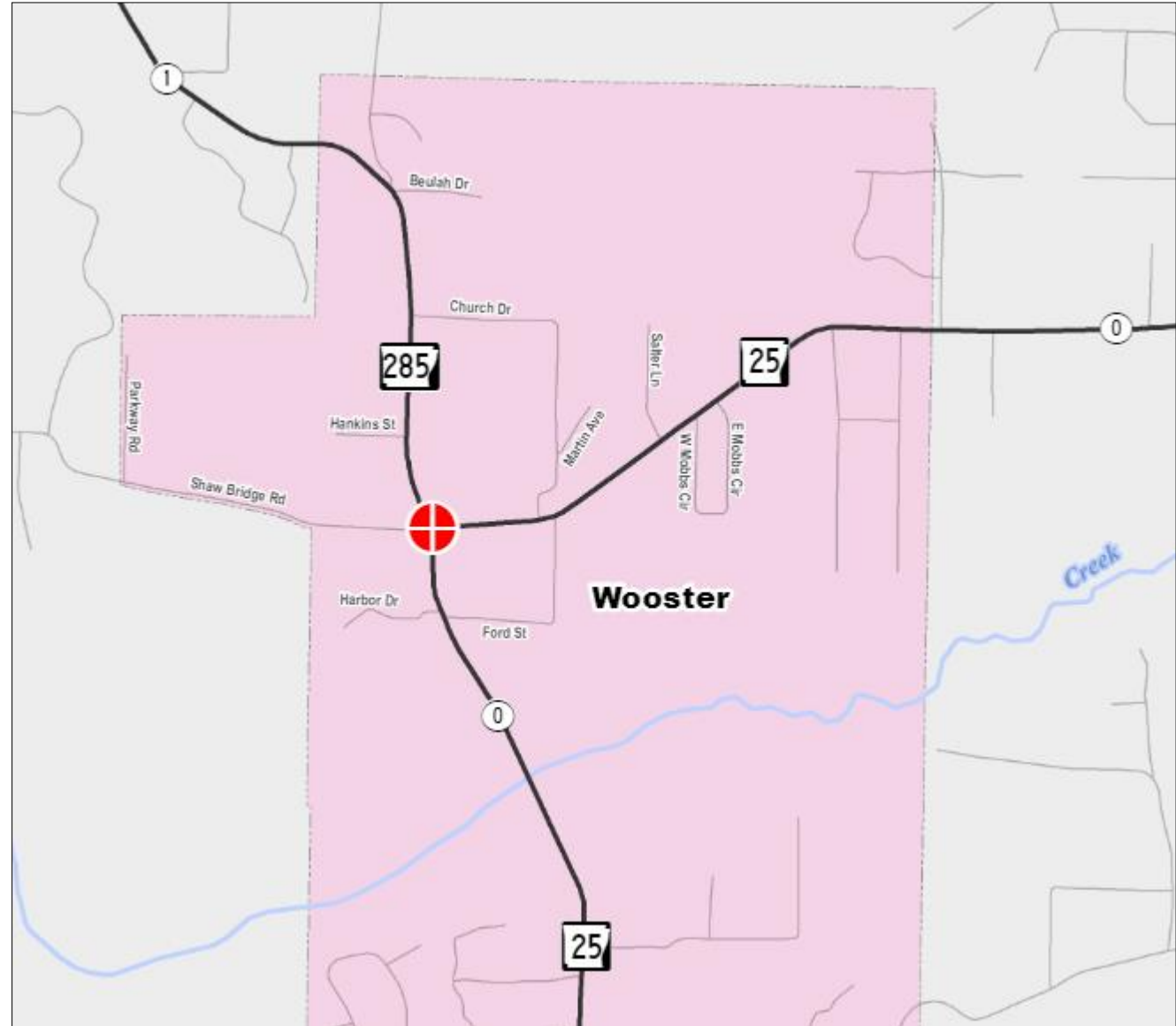


# Highways 25 & 285 - Wooster

- Roundabout

**Scheduled**

Intersection: 1  
Amount (Millions): Est \$<1

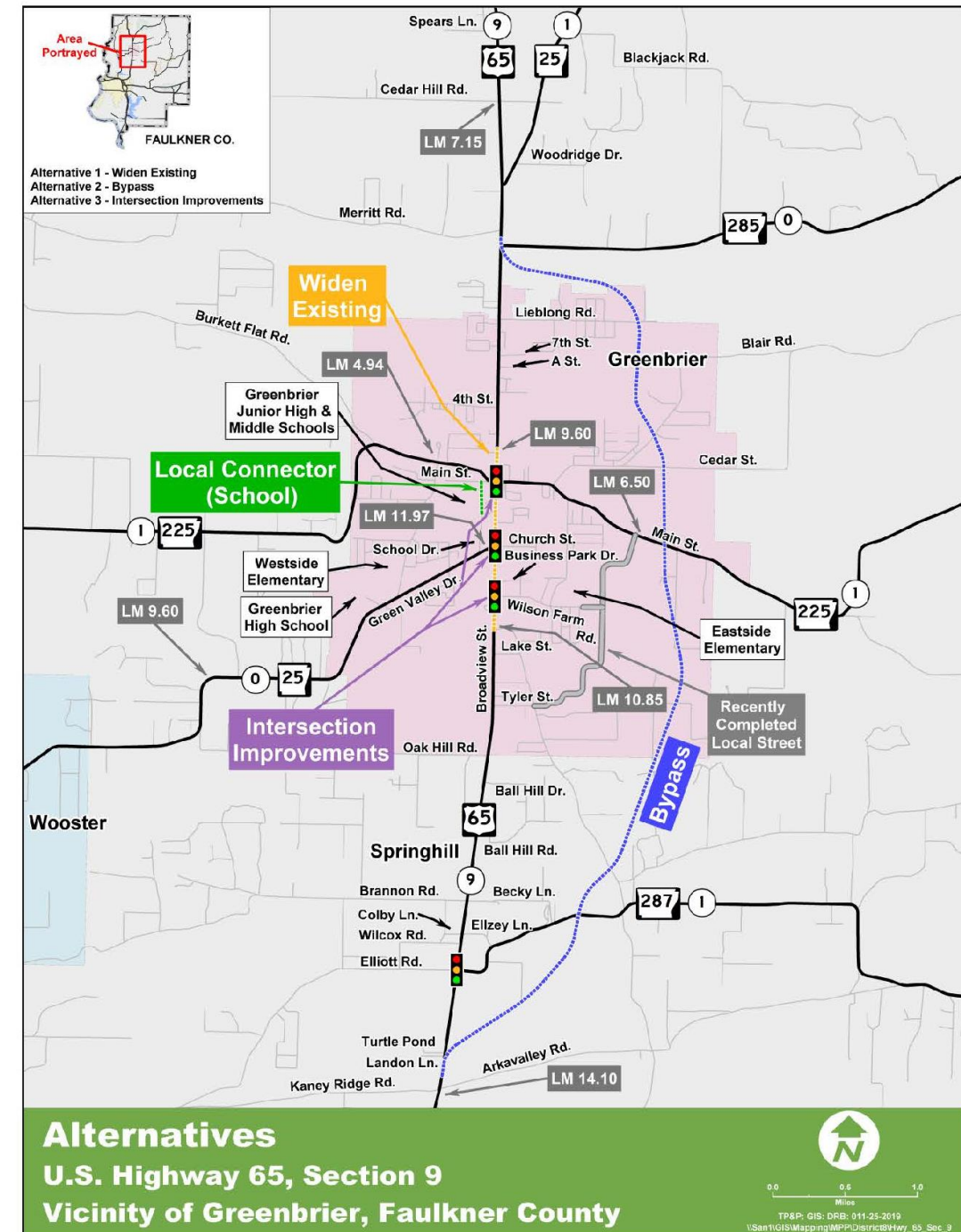




# Greenbrier Study

## (Highways 25, 65 & 225)

- There were 3 Alternatives that were analyzed.
  - Widen existing Hwy. 65
  - Build a Bypass
  - Improve various Intersections throughout town







**Lorie Tudor, P.E.**  
Director

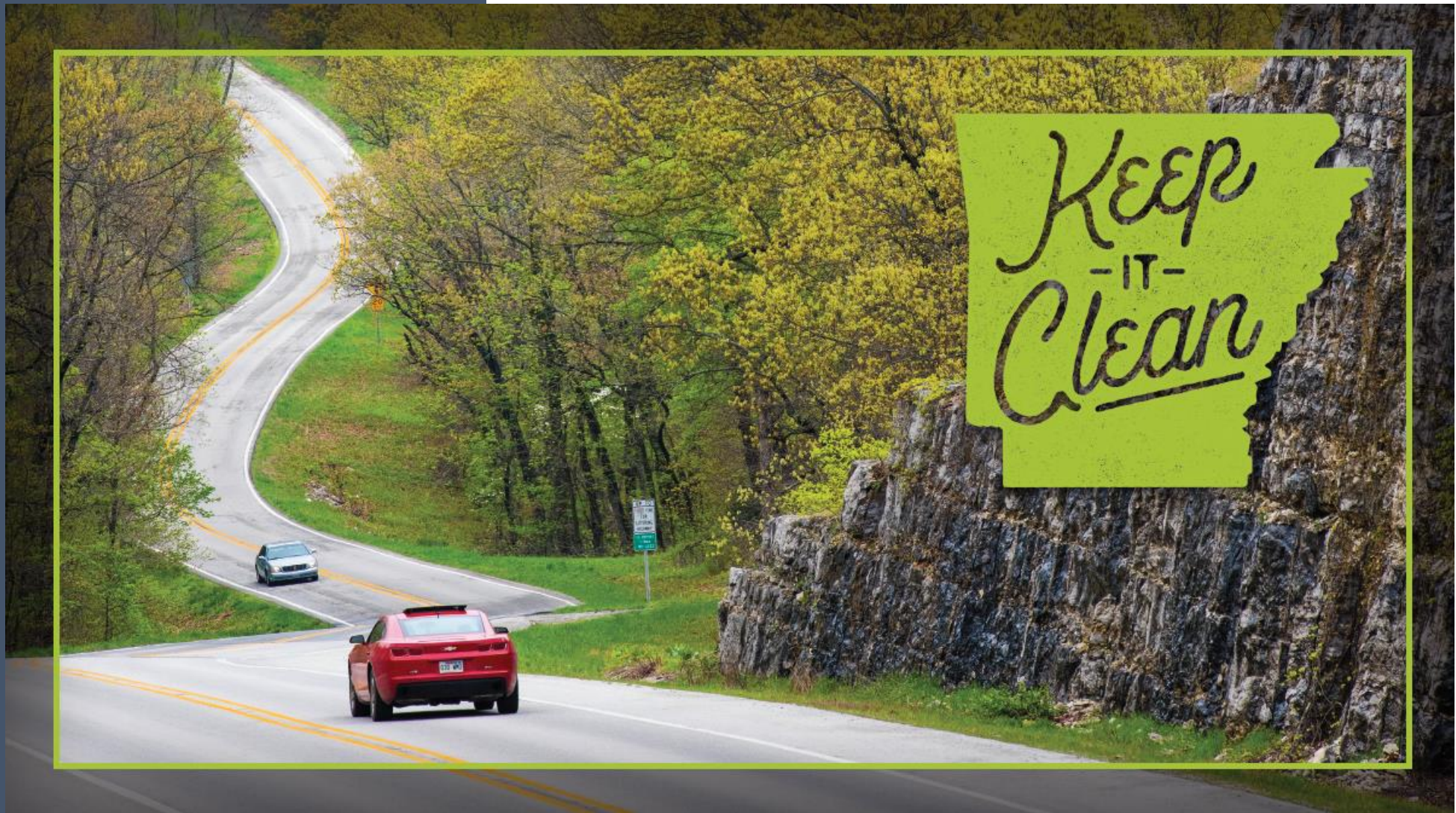
**Greenbrier Town Hall  
Meeting  
April 28, 2022**





# Public Service Campaigns











## **SLOW DOWN PHONE DOWN** in work zones

- **Slow Down, Phone Down:** a statewide work zone safety campaign
- Arkansas Highway Police and Arkansas State Police **cracking down on distracted and reckless driving**
- **Education and awareness** around work zone laws



## **WORK ZONE CRASHES**



**2018**

1,224

**2019**

1,301

**2020**

1,459

**2021**

2,140







# NEW YEAR, NEW ARDOT!

We're now on Facebook and Instagram: @myardot



# East Conway Connector Study

