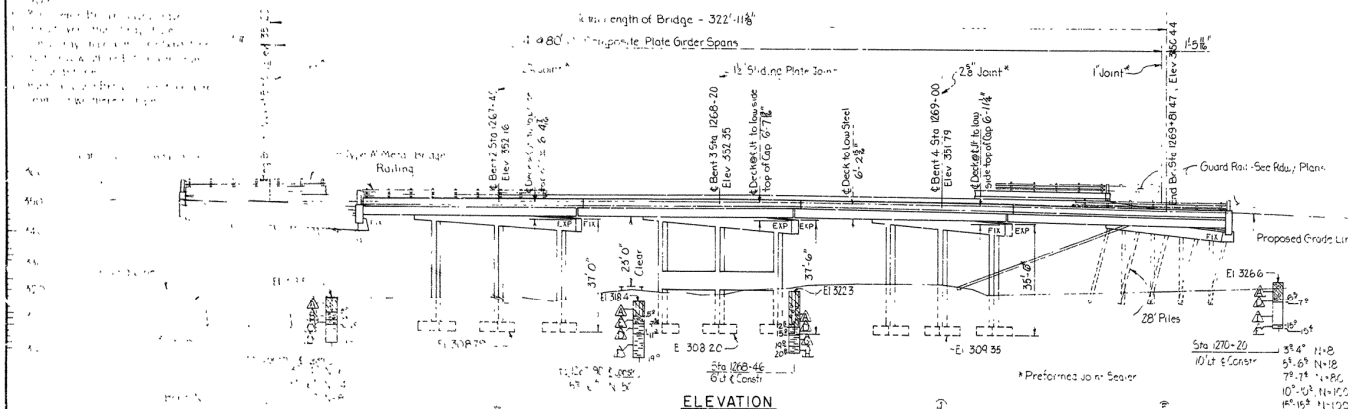


BORING LEGEND

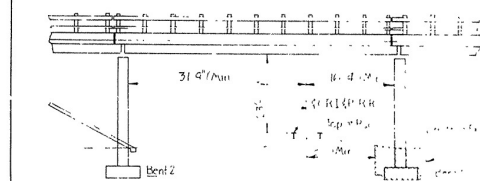
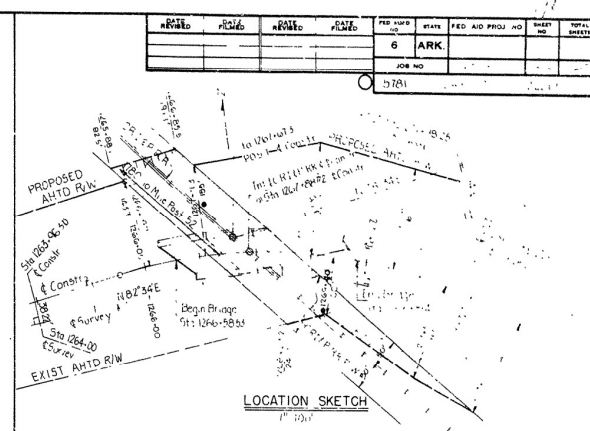
- A - 1" x 1" x 1/2" steel plate
- B - 1" x 1" x 1/2" steel plate
- C - 1" x 1" x 1/2" steel plate
- D - 1" x 1" x 1/2" steel plate
- E - 1" x 1" x 1/2" steel plate
- F - 1" x 1" x 1/2" steel plate
- G - 1" x 1" x 1/2" steel plate
- H - 1" x 1" x 1/2" steel plate
- I - 1" x 1" x 1/2" steel plate
- J - 1" x 1" x 1/2" steel plate
- K - 1" x 1" x 1/2" steel plate
- L - 1" x 1" x 1/2" steel plate
- M - 1" x 1" x 1/2" steel plate
- N - 1" x 1" x 1/2" steel plate
- O - 1" x 1" x 1/2" steel plate
- P - 1" x 1" x 1/2" steel plate
- Q - 1" x 1" x 1/2" steel plate
- R - 1" x 1" x 1/2" steel plate
- S - 1" x 1" x 1/2" steel plate
- T - 1" x 1" x 1/2" steel plate
- U - 1" x 1" x 1/2" steel plate
- V - 1" x 1" x 1/2" steel plate
- W - 1" x 1" x 1/2" steel plate
- X - 1" x 1" x 1/2" steel plate
- Y - 1" x 1" x 1/2" steel plate
- Z - 1" x 1" x 1/2" steel plate

PLAN

VERTICAL CURVE DATA



ELEVATION



ELEVATION NORMAL TO TRACK

GENERAL NOTES

BEACH MARK: N.E.S., 30' GND. P.L., STA. 127+00, ELEV. 112.11
 ALL CONCRETE SHALL BE POURED IN THE FIELD. ALL CONCRETE SHALL BE 3/4" UNLESS NOTED OTHERWISE.
 FILING FOR END BENTS SHALL BE 1/2" X 1/2" X 1/2" STEEL PLATE. ALL STEEL SHALL BE A36 STEEL, OR DIESEL HARDENED TO A MINIMUM YIELDING STRENGTH OF 50 KSI. ALL STEEL SHALL BE GALVANIZED TO A MINIMUM OF 1.0 OZ./SQ. YD. OF SURFACE. ALL GALVANIZED STEEL SHALL BE PAINTED WITH AN ANTI-RUST PAINT. ALL GALVANIZED STEEL SHALL BE PAINTED WITH AN ANTI-RUST PAINT. ALL GALVANIZED STEEL SHALL BE PAINTED WITH AN ANTI-RUST PAINT.

DESIGN SPECIFICATIONS: ARKANSAS STANDARD SPECIFICATIONS FOR BRIDGES AND HIGHWAYS, 1977 EDITION, WITH 1978 INTERIM.
 LIVE LOADING: HS20
 METHOD OF DESIGN: LOAD FACTOR

FOOTINGS FOR ALL PILES SHALL BE 1/2" X 1/2" X 1/2" STEEL PLATE. ALL STEEL SHALL BE A36 STEEL, OR DIESEL HARDENED TO A MINIMUM YIELDING STRENGTH OF 50 KSI. ALL STEEL SHALL BE GALVANIZED TO A MINIMUM OF 1.0 OZ./SQ. YD. OF SURFACE. ALL GALVANIZED STEEL SHALL BE PAINTED WITH AN ANTI-RUST PAINT. ALL GALVANIZED STEEL SHALL BE PAINTED WITH AN ANTI-RUST PAINT. ALL GALVANIZED STEEL SHALL BE PAINTED WITH AN ANTI-RUST PAINT.

FOR DETAILS OF THE BENTS, SEE EXHIBIT "A".
 FOR DETAILS OF THE SPANS, SEE EXHIBIT "A".
 FOR DETAILS OF THE BEARINGS, SEE EXHIBIT "A".

SPECIFICATIONS: ARKANSAS STANDARD SPECIFICATIONS FOR BRIDGES AND HIGHWAYS, 1977 EDITION, WITH 1978 INTERIM.
 HIGHWAY CONSTRUCTION, FEDERAL AID, 1977 EDITION, WITH 1978 INTERIM.

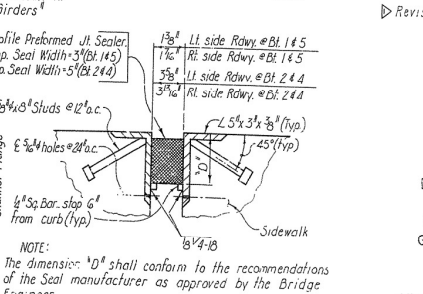
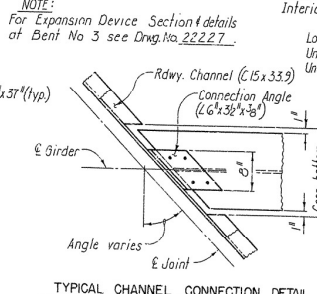
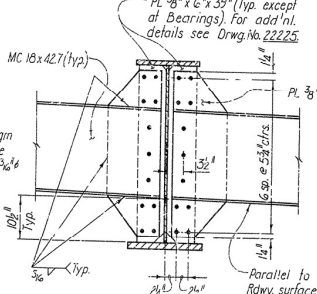
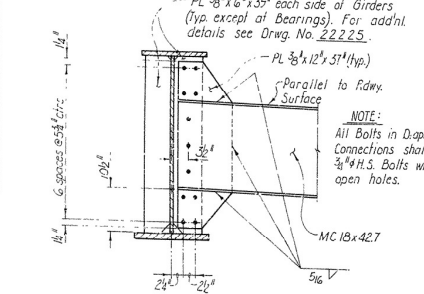
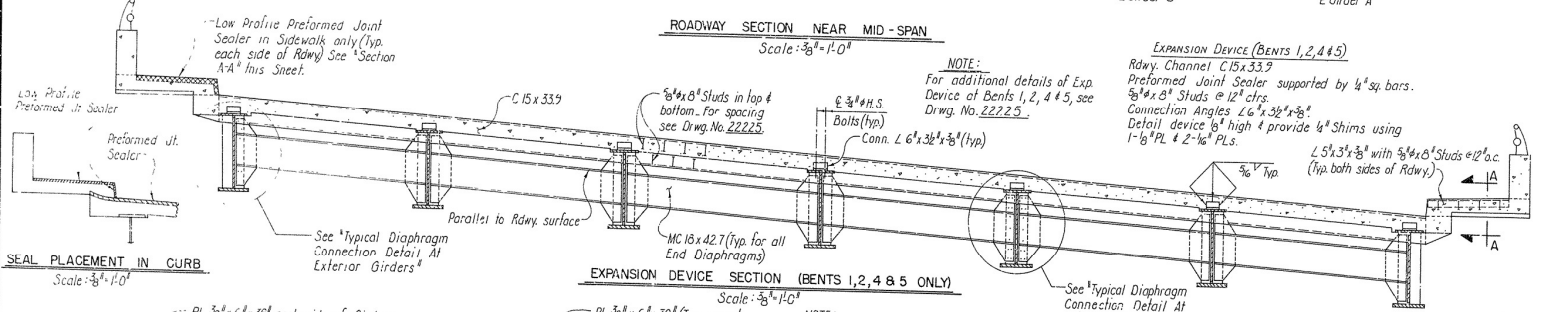
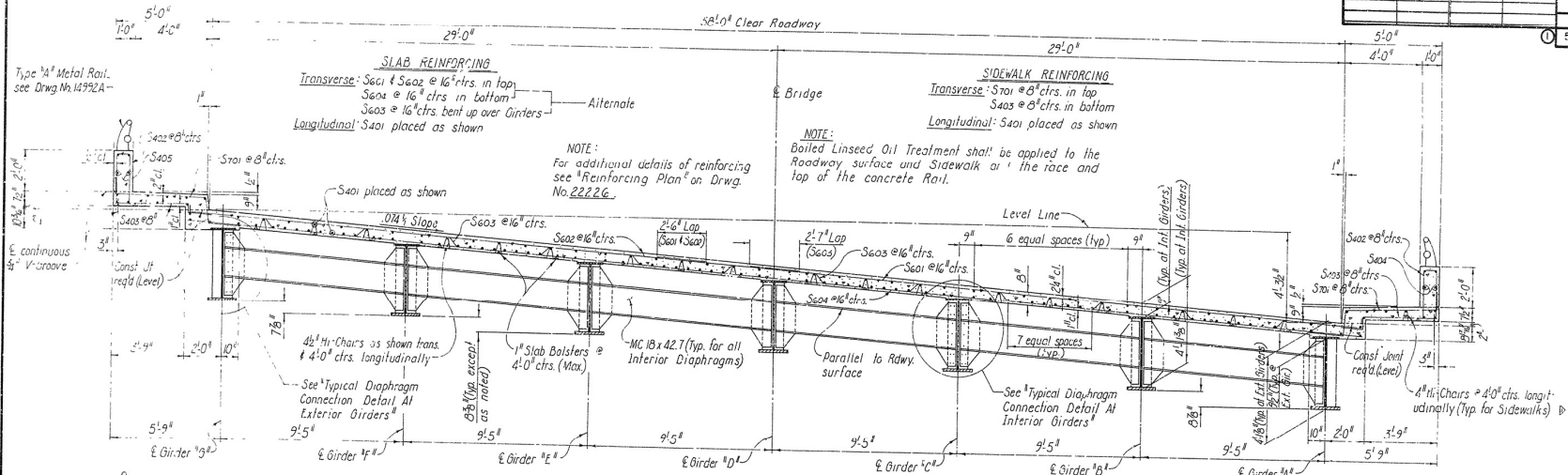
EXHIBIT "A"
 LAYOUT OF OVERPASS OVER
 C.R.I. & P. RR. & WESTINGHOUSE ROAD
 GULPHA CREEK - WILSON SPRINGS ROAD
 GARLAND COUNTY

ROUTE 270 SEC. 6
 ARKANSAS STATE HIGHWAY COMMISSION
 LITTLE ROCK, ARK.

DRAWN BY: DATE: 10/1/78
 CHECKED BY: DATE: 10/1/78
 DESIGNED BY: DATE: 10/1/78
 BRIDGE NO. 5781 DRAWING NO. 22219

DATE	DATE	DATE	DATE	PER. NO.	STAT.	PROJ. NO.	SHEET NO.	TOTAL SHEETS
3-14-79	12-12-78			6	ARK.			
						60115	41	147

5781 - SPAN DTLS. - 22224



Revised 14 June 79. Added H.R. Chairs - S. Sidewalk. - M. 3

NOTE:
 For General Notes see Drwg. No. 22220

SHEET 1 OF 5
 DETAILS OF 80'-0" PLATE GIRDER SPANS
 FOR OVERPASS OVER
 C.R.I.B.P. R.R. & WESTINGHOUSE ROAD
 GULPHA CREEK - WILSON SPRINGS ROAD
 GARLAND COUNTY
 ROUTE 270 SEC. 6
 ARKANSAS STATE HIGHWAY COMMISSION
 LITTLE ROCK, ARK.
 DATE: 20 NOV 78
 CHECKED BY: C.E.S. DATE: 12-12-78
 DESIGNED BY: J.P.B. DATE: 9/27/78
 SCALE: AS SHOWN
 BRIDGE NO. 5781 DRAWING NO. 22224