

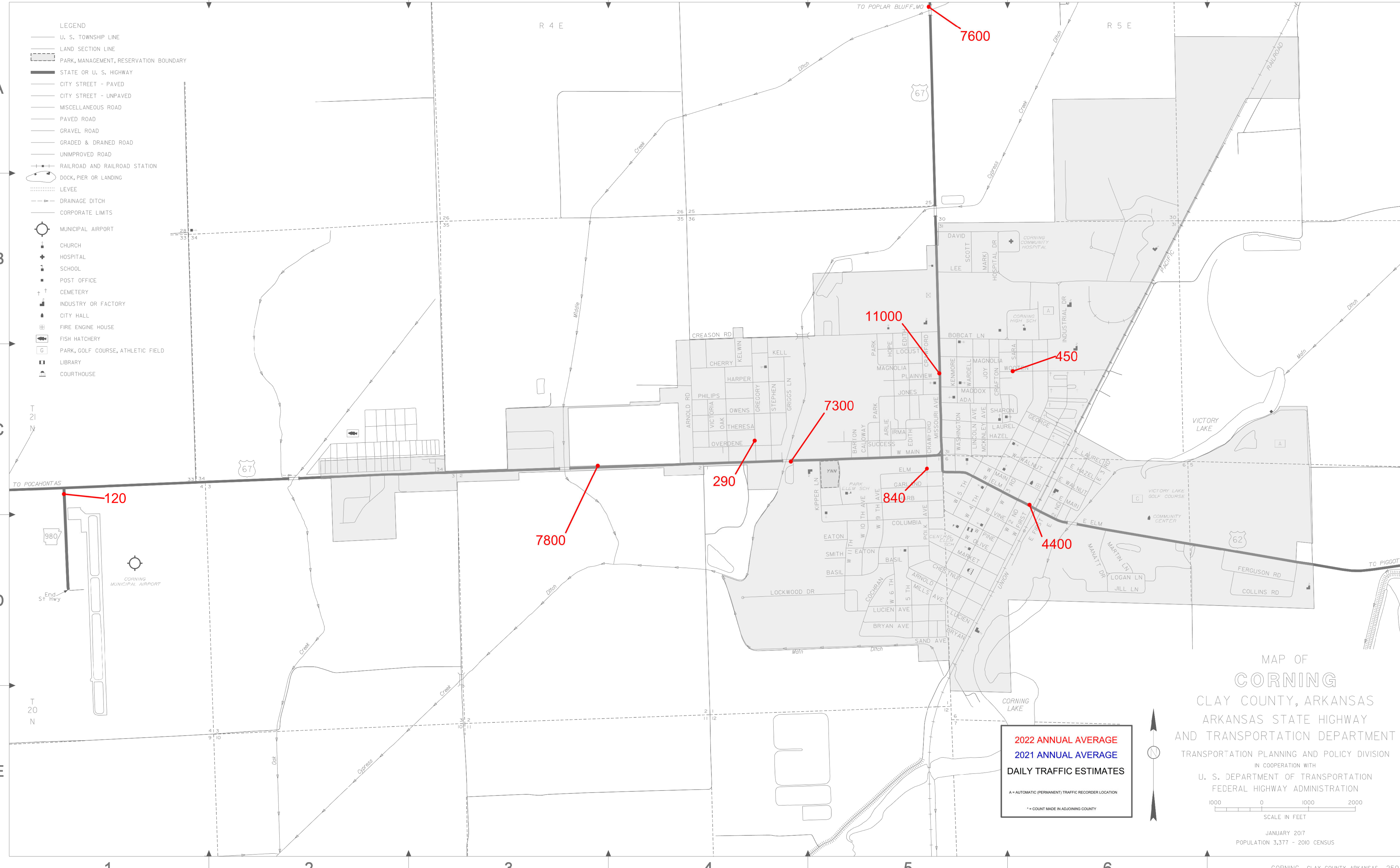
- U. S. TOWNSHIP LINE
- LAND SECTION LINE
- PARK, MANAGEMENT, RESERVATION BOUNDARY
- STATE OR U. S. HIGHWAY
- CITY STREET - PAVED
- CITY STREET - UNPAVED
- MISCELLANEOUS ROAD
- PAVED ROAD
- GRAVEL ROAD
- GRADED & DRAINED ROAD
- UNIMPROVED ROAD
- RAILROAD AND RAILROAD STATION
- DOCK, PIER OR LANDING
- LEVEE
- DRAINAGE DITCH
- CORPORATE LIMITS
- MUNICIPAL AIRPORT
- CHURCH
- HOSPITAL
- SCHOOL
- POST OFFICE
- CEMETERY
- INDUSTRY OR FACTORY
- CITY HALL
- FIRE ENGINE HOUSE
- FISH HATCHERY
- PARK, GOLF COURSE, ATHLETIC FIELD
- LIBRARY
- COURTHOUSE

2022 ANNUAL AVERAGE
2021 ANNUAL AVERAGE
DAILY TRAFFIC ESTIMATES

A = AUTOMATIC (PERMANENT) TRAFFIC RECORDER LOCATION
 * = COUNT MADE IN ADJOINING COUNTY

SCALE IN FEET
 1000 0 1000 2000

JANUARY 2017
 POPULATION 3,377 - 2010 CENSUS



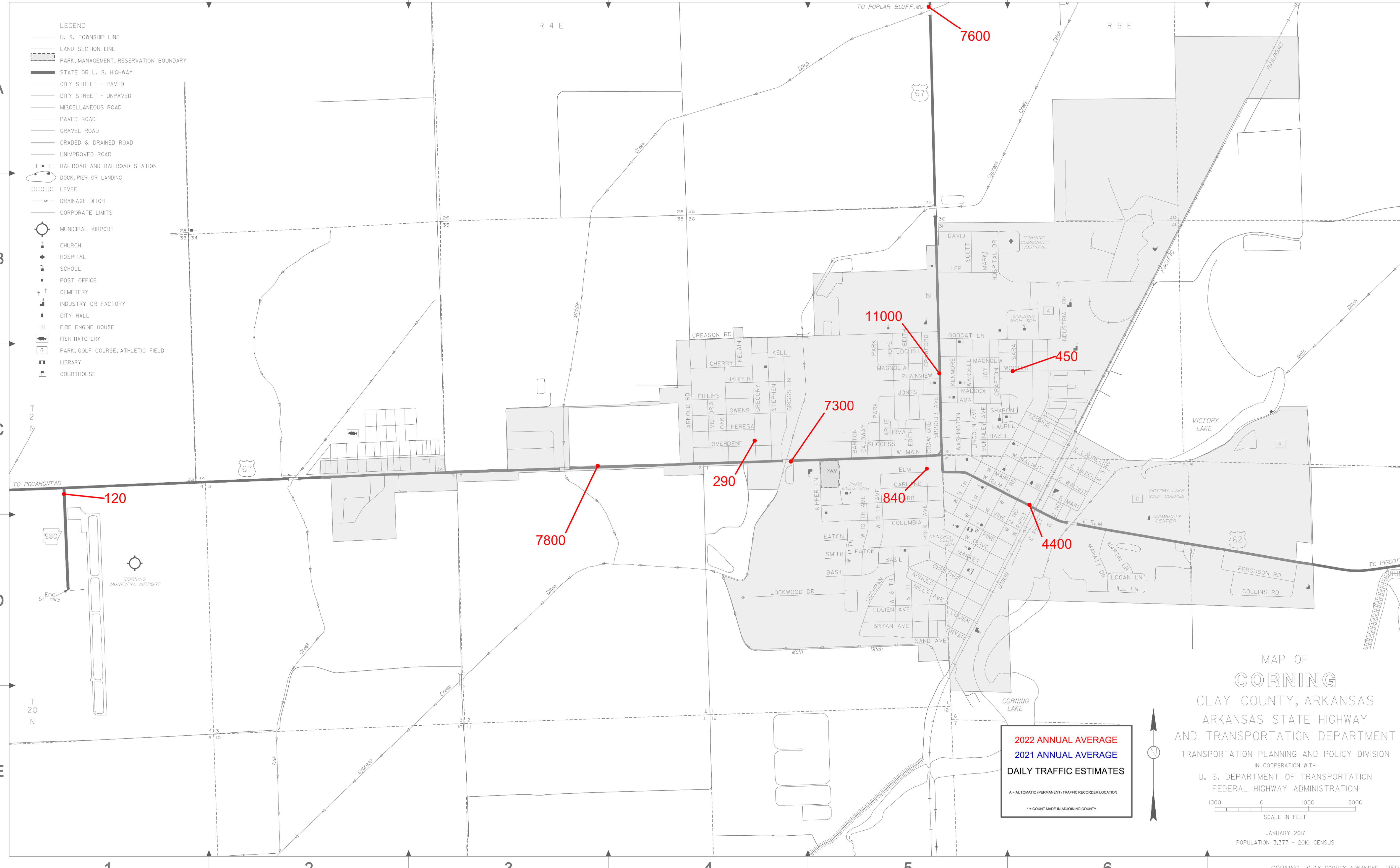
- U. S. TOWNSHIP LINE
- LAND SECTION LINE
- PARK, MANAGEMENT, RESERVATION BOUNDARY
- STATE OR U. S. HIGHWAY
- CITY STREET - PAVED
- CITY STREET - UNPAVED
- MISCELLANEOUS ROAD
- PAVED ROAD
- GRAVEL ROAD
- GRADED & DRAINED ROAD
- UNIMPROVED ROAD
- RAILROAD AND RAILROAD STATION
- DOCK, PIER OR LANDING
- LEVEE
- DRAINAGE DITCH
- CORPORATE LIMITS
- MUNICIPAL AIRPORT
- CHURCH
- HOSPITAL
- SCHOOL
- POST OFFICE
- CEMETERY
- INDUSTRY OR FACTORY
- CITY HALL
- FIRE ENGINE HOUSE
- FISH HATCHERY
- PARK, GOLF COURSE, ATHLETIC FIELD
- LIBRARY
- COURTHOUSE

2022 ANNUAL AVERAGE
2021 ANNUAL AVERAGE
DAILY TRAFFIC ESTIMATES

A = AUTOMATIC (PERMANENT) TRAFFIC RECORDER LOCATION
 * = COUNT MADE IN ADJOINING COUNTY

SCALE IN FEET
 1000 0 1000 2000

JANUARY 2017
 POPULATION 3,377 - 2010 CENSUS



- U. S. TOWNSHIP LINE
- LAND SECTION LINE
- PARK, MANAGEMENT, RESERVATION BOUNDARY
- STATE OR U. S. HIGHWAY
- CITY STREET - PAVED
- CITY STREET - UNPAVED
- MISCELLANEOUS ROAD
- PAVED ROAD
- GRAVEL ROAD
- GRADED & DRAINED ROAD
- UNIMPROVED ROAD
- RAILROAD AND RAILROAD STATION
- DOCK, PIER OR LANDING
- LEVEE
- DRAINAGE DITCH
- CORPORATE LIMITS
- MUNICIPAL AIRPORT
- CHURCH
- HOSPITAL
- SCHOOL
- POST OFFICE
- CEMETERY
- INDUSTRY OR FACTORY
- CITY HALL
- FIRE ENGINE HOUSE
- FISH HATCHERY
- PARK, GOLF COURSE, ATHLETIC FIELD
- LIBRARY
- COURTHOUSE

2022 ANNUAL AVERAGE
2021 ANNUAL AVERAGE
DAILY TRAFFIC ESTIMATES

A = AUTOMATIC (PERMANENT) TRAFFIC RECORDER LOCATION
 * = COUNT MADE IN ADJOINING COUNTY

SCALE IN FEET
 1000 0 1000 2000

JANUARY 2017
 POPULATION 3,377 - 2010 CENSUS