

FACT SHEET

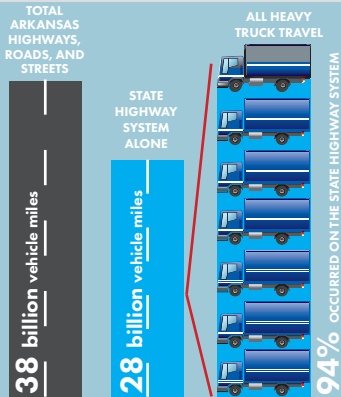
ARKANSAS DEPARTMENT OF TRANSPORTATION
2022

TRAVEL

Travel across all Arkansas highways, roads, and streets totaled **38 billion** vehicle miles in 2021.

Travel across the State Highway System totaled **28 billion** vehicle miles, 73% of the total travel.

In 2021, over **94%** of all heavy truck travel in Arkansas occurred on the State Highway System.



	Number of Miles	% of Total Miles	% of VMT
State Highways	16,454	17%	72%
County Roads	65,553	66%	11%
City Streets	17,240	17%	17%
Total	99,246	100%	100%

(FHWA 2020 DATA)

MOTOR FUEL CONSUMPTION

PERCENT CHANGE

Gasoline:	2.42%
Diesel:	1.99%

(SFY 2022 COMPARED TO SFY 2021)
DFA/June 2022 Status of Revenues

ARKANSAS STATE HIGHWAY COMMISSION

The first Arkansas State Highway Commission was appointed in 1913. Amendment 42 of the Constitution of Arkansas, adopted in 1952, established the five-member State Highway Commission. Under this authority, the State Highway Commission is vested with powers and duties for administering Arkansas' State Highway System. Act 192 of 1977 created the Arkansas Department of Transportation (Department), adding responsibilities for coordinating public and private transportation activities and implementing a safe and efficient intermodal transportation system.

ORGANIZATION AND PERSONNEL

CENTRAL OFFICE



- 10 District Headquarters
- 84 Maintenance Headquarters
- 32 Resident Engineer Offices

(SFY 2022)

Full Time Workforce



SAFETY

The 2022 Arkansas Strategic Highway Safety Plan (SHSP) identified four emphasis areas and fourteen focus areas. It recommended strategies for each to reduce the number of fatal and serious injury roadway crashes. It was determined that the 2022 SHSP should focus on these four emphasis areas in order to better look at safety through the lens of The Safe Systems approach. The performance targets are as follows: Reduce the number of fatalities in Arkansas, Reduce the fatality rate, Reduce the number of serious injuries, Reduce the serious injury rate, and Reduce the number of non-motorized fatalities and serious injuries by 2% annually until 2025.

STATE HIGHWAY SYSTEM

12th NATIONAL RANKING
STATE HIGHWAY SYSTEM MILES

(FHWA 2020 Data)



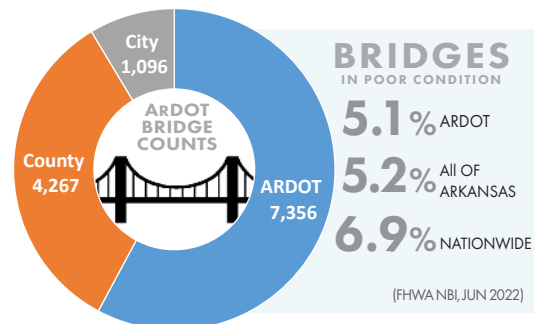
109 PROJECTS
TotaIling Approximately **\$616** MILLION LET TO CONTRACT ON THE HIGHWAY SYSTEM

(SFY 2022)

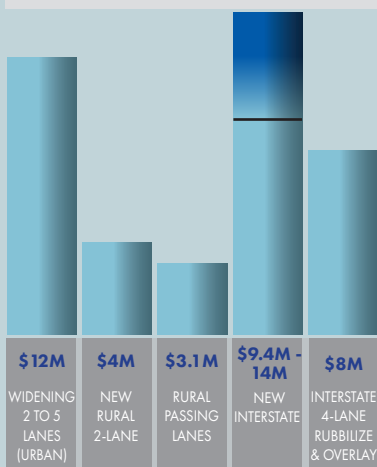
PUBLIC TRANSIT

The Department administers five Federal Transit Administration formula programs totaling over \$29 million for FFY 2022. These programs are supported by the Mass Transit Account that is funded by a 2.86¢ per gallon federal fuel tax and Federal General Fund revenues. Act 949 of 2001 established the Arkansas Public Transit Fund, to be funded from a 5% tax on car rental rates, which generates approximately \$6 million annually for transit activities. The funds generated by the tax on rental cars are used to match federal funds for the purchase of public transportation vehicles, public transit equipment or facilities, and for the operation of the U.S. Department of Transportation Federal Transit Administration Assistance programs.

BRIDGES



TYPICAL CONSTRUCTION COST PER MILE



(Dec 2021)

ARKANSAS SCENIC BYWAYS

Arkansas Scenic 7 Byway

Harrison to the Louisiana State Line.

Highway 21/Ozark Highlands

Highway 64 to the Newton Co. Line.

Mount Magazine/Highway 309

Webb City to Havana.

Interstate 530

Pine Bluff.

Boston Mountains Scenic Loop

Interstate 49 and U.S. 71, Alma to Fayetteville.

West-Northwest Scenic Byway System

Highway 10, Ola to Oklahoma State Line. Highway 23, U.S. 71 to Logan Co. Line & within Booneville. Highway 71, Mena to Interstate 540.

Sylamore Scenic Byway

Highway 5, Highway 14, Forest Service Road 110, Ozark National Forest.

Pig Trail Scenic Byway

Highway 23, Ozark National Forest.

Camden Expedition Scenic Byway

Various highways and roads in central and southern Arkansas, connecting Civil War sites.

(SFY 2022)

NATIONAL SCENIC BYWAYS

Talimena Scenic Drive

Highway 88.

Crowley's Ridge Parkway

Helena-West Helena to St. Francis.

ALL-AMERICAN ROADS

Great River Road

Missouri State Line to Louisiana State Line.

(FFY 2022)

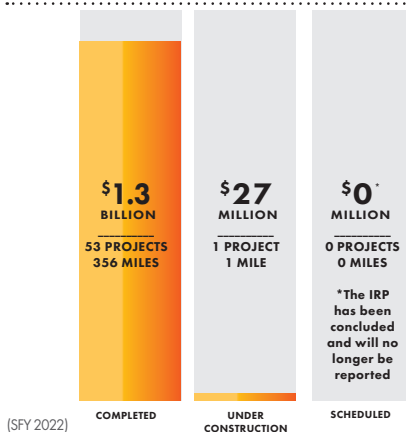
STATE FUNDING

Road-user revenues are generated under tax laws governing motor fuels, special motor fuels, and motor vehicle registrations. After deductions for other programs, the Department receives 70% and 30% is divided equally between cities and counties. Net Department funds, including interest, in State Fiscal Year 2022 amounted to \$575 million. Cities and counties each received approximately \$110 million. Alternative fuels are assessed by a graduated scale based on annual registered vehicle users. Currently, a State Environmental Assurance Fee of 0.3¢ per gallon is also collected for the Regulated Storage Tank Trust Fund. Electric Vehicles, Plug-In Hybrid Vehicles, and Hybrid Vehicles pay additional registration fees of \$200, \$100, and \$50, respectively. Current State Motor Fuel Tax Rates per gallon are:

Gasoline	24.5¢
Diesel	28.5¢
Liquefied Petroleum Gas	16.5¢
Compressed Natural Gas	5.0¢

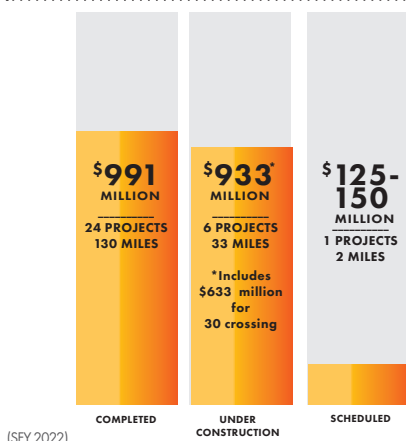
(SFY 2022)

INTERSTATE REHABILITATION PROGRAM (IRP)



(SFY 2022)

CONNECTING ARKANSAS PROGRAM (CAP)



(SFY 2022)

STATE AID COUNTY ROAD AND CITY STREET PROGRAM

The State Aid Division (Division), authorized under Act 445 of 1973, administers the State Aid County Road Program and administers Federal-aid Highway funds available for county roads and bridges. In State Fiscal Year 2022, 58 jobs on 237 miles and three bridges were contracted at a total cost of \$37.4 million. The Division also administers the State Aid City Street Program and Federal-aid Highway funds available for city bridges. In the 2011 Arkansas General Assembly, HJR 1001 was adopted. This resolution, which reallocated 1¢ of the existing motor fuel tax to fund a State Aid City Street program, was approved by the vote of the people on November 6, 2012. A State Aid Street Committee consisting of nine mayors was appointed in accordance with Act 1032 of 2011 to establish procedures and guidelines for the State Aid City Street program and approve funding requests. As of December 2021, the Committee has approved funding for 882 city street projects. In State Fiscal Year 2022, 42 jobs on 93 miles in 57 cities were contracted at a total cost of \$22.9 million (\$16.4 million of State Aid City Street funds).

FEDERAL FUNDING

On November 15, 2021, the Infrastructure Investment and Jobs Act (IIJA), also known as the "Bipartisan Infrastructure Law" was enacted and authorized highway and transit programs funding for a five-year period (FFY 2022-2026). Arkansas receives an average of \$780 million in each Fiscal Year. Taxes are levied on motor fuels per gallon with the revenues deposited in the Federal Highway Trust Fund Federal-aid Highway Account, Mass Transit Account, and Leaking Underground Storage Tank Trust (LUST) Fund.

FUEL	HIGHWAY	TRANSIT	LUST	TOTAL
Gasoline	15.44¢	2.86¢	0.1¢	18.4¢
Diesel	21.44¢	2.86¢	0.1¢	24.4¢
LPG	16.17¢	2.13¢	0.0¢	18.3¢
CNG	17.07¢	1.23¢	0.0¢	18.3¢

LPG — LIQUEFIED PETROLEUM GAS
CNG — COMPRESSED NATURAL GAS
LUST — LEAKING UNDERGROUND STORAGE TANK

(FHWA 2020)

FACT SHEET | ARKANSAS DEPARTMENT OF TRANSPORTATION

P.O. BOX 2261 • LITTLE ROCK, AR 72203 • PHONE: 501-569-2000 • FAX: 501-569-2400
EMAIL: INFO@ARDOT.GOV • WEB: WWW.ARDOT.GOV