

DATE REVISED	DATE FILMED	DATE REMOVED	DATE FILED	FED. PROJ. NO.	STATE	FED. AID PROJ. NO.	SHEET NO.	TOTAL SHEETS
				6	ARK.	505-0050-1		
				JOB NO.		NS-59-1	5	34
① 4340 - QUANTITIES - 21347								

SCHEDULE OF BRIDGE QUANTITIES

BRIDGE NO. 4340	CODE NO. X020	NAME BARNES	PLATE CREAK	UNIT OF STRUCTURE	ITEM NO.	SP & 802	803	SP & 804	* SP & 805	812
					ITEM	CLASS S CONCRETE	BOILED LINSEED OIL	REINFORCING STEEL (GRADE 60)	PRECAST CONCRETE PILING (16" OCT or 16" SQ.)	BRIDGE NAME PLATE (TYPE C)
					UNIT					
						CU. YD.	GAL.	LB.	LIN FT	EACH
				END BENT NOS. 1 & 4		20.00		2525	320	
				INTERMEDIATE BENT NOS. 2 & 3		15.48		2320	405	
				2 - 31'-0" END R.C. SLAB SPANS		105.80	4.8	18205		1
				1 - 31'-0" INT. R.C. SLAB SPANS		52.12	2.4	9040		
				TOTALS FOR JOB NO. NS-59-1		194.40	7.2	32,090	725	1

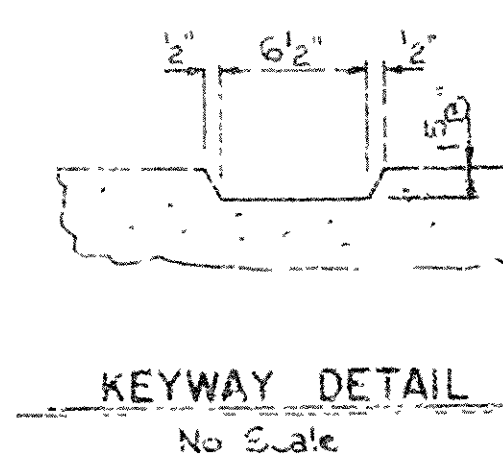
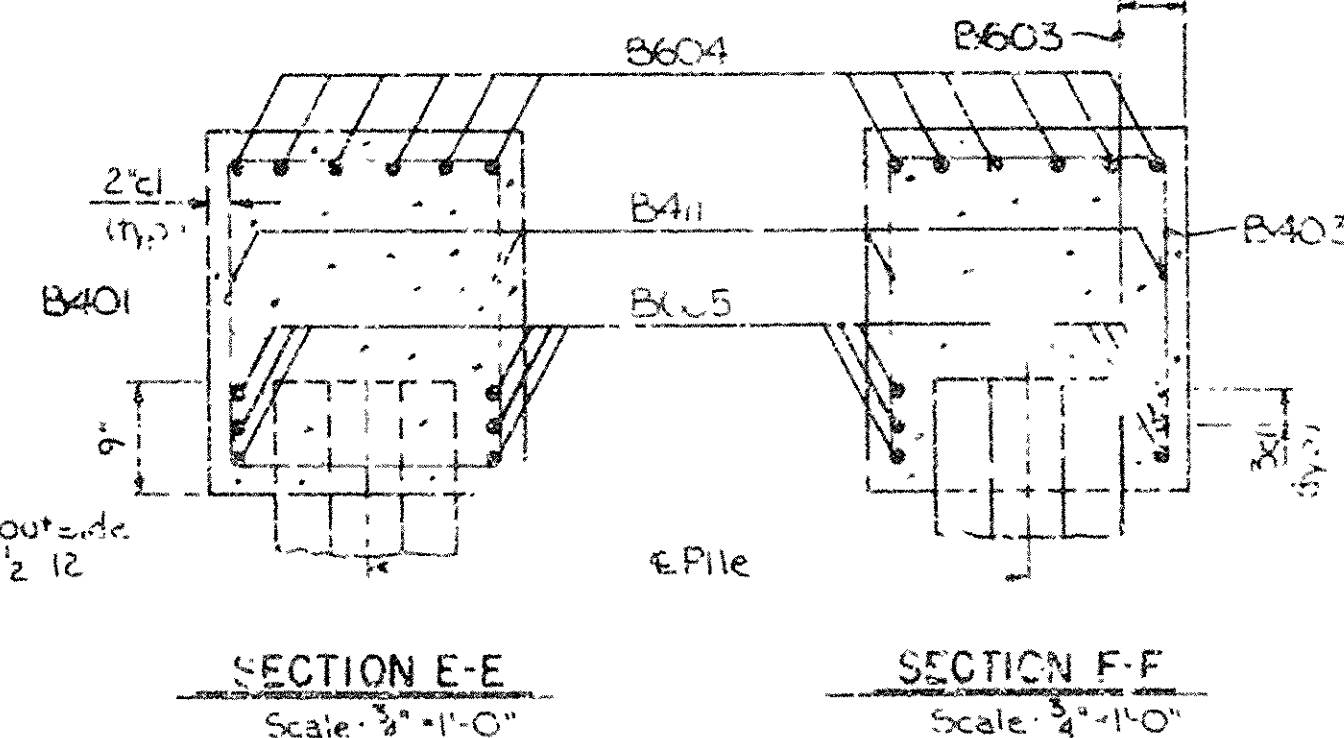
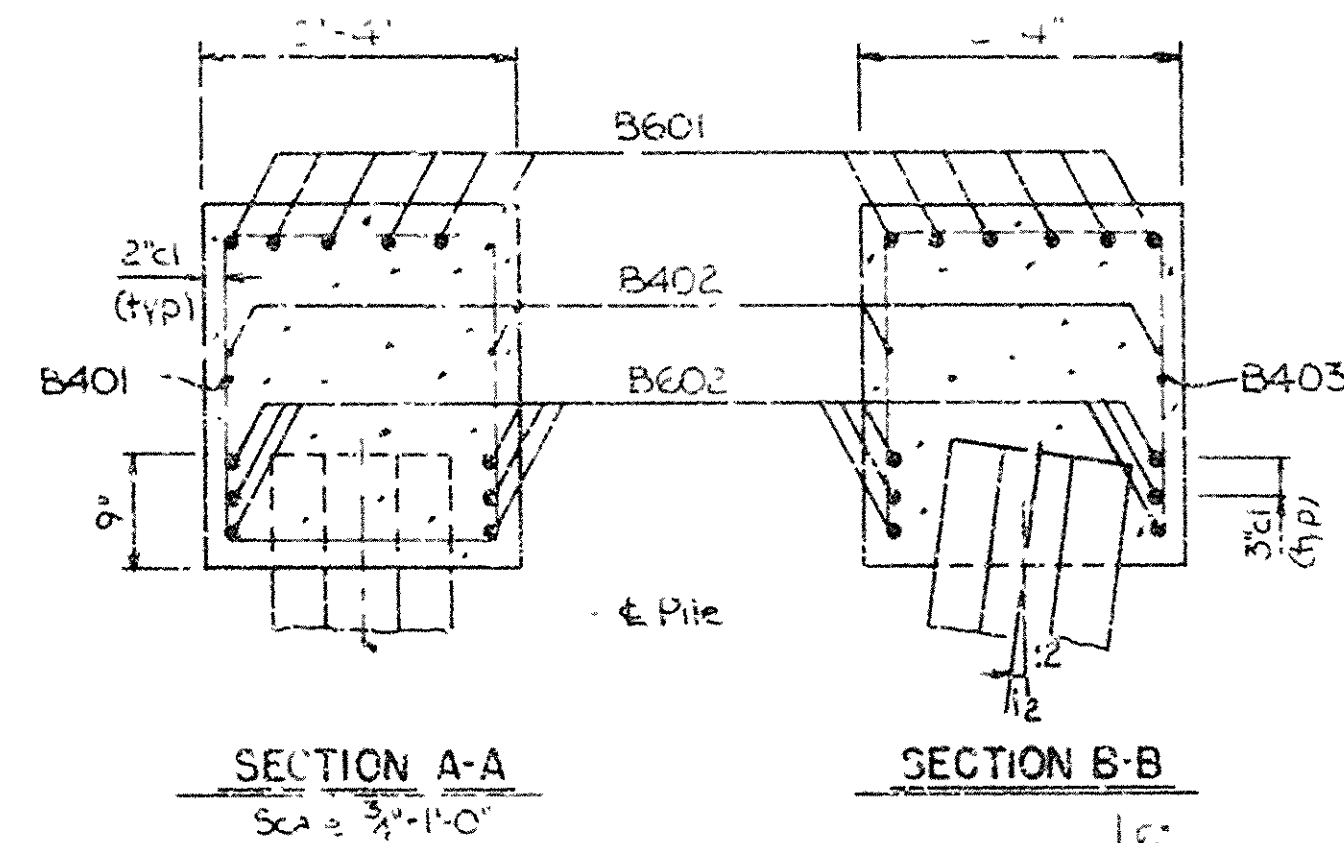
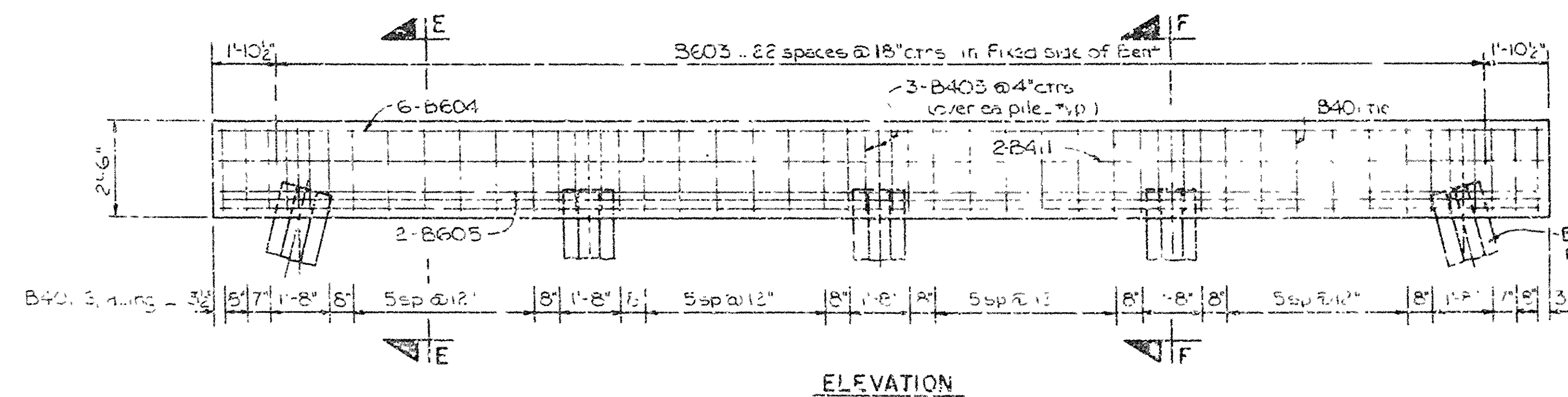
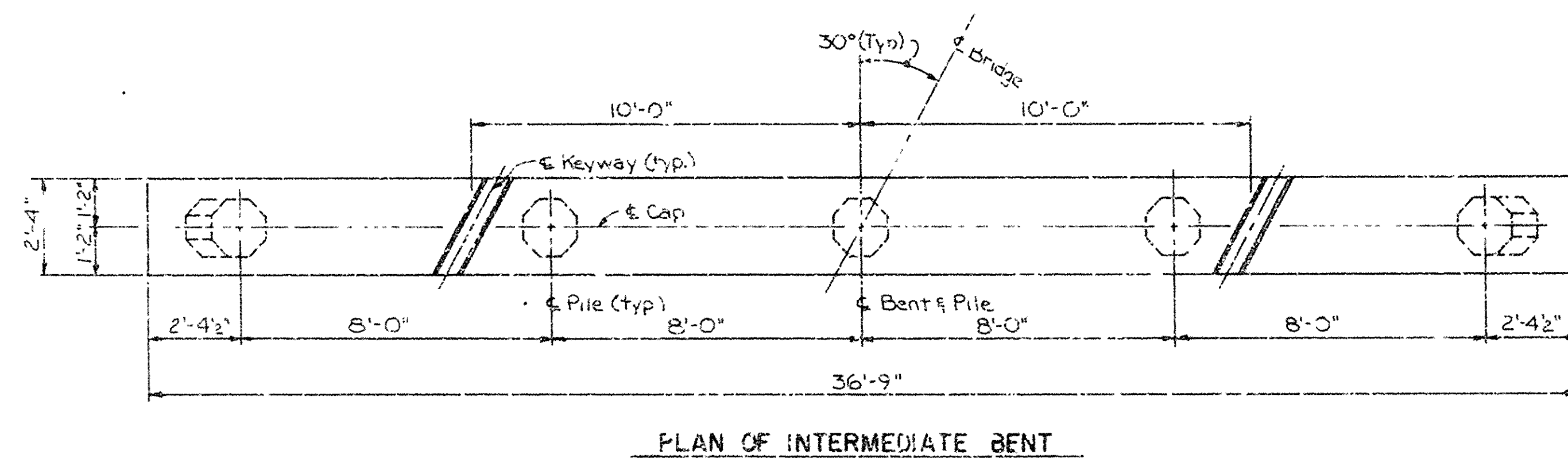
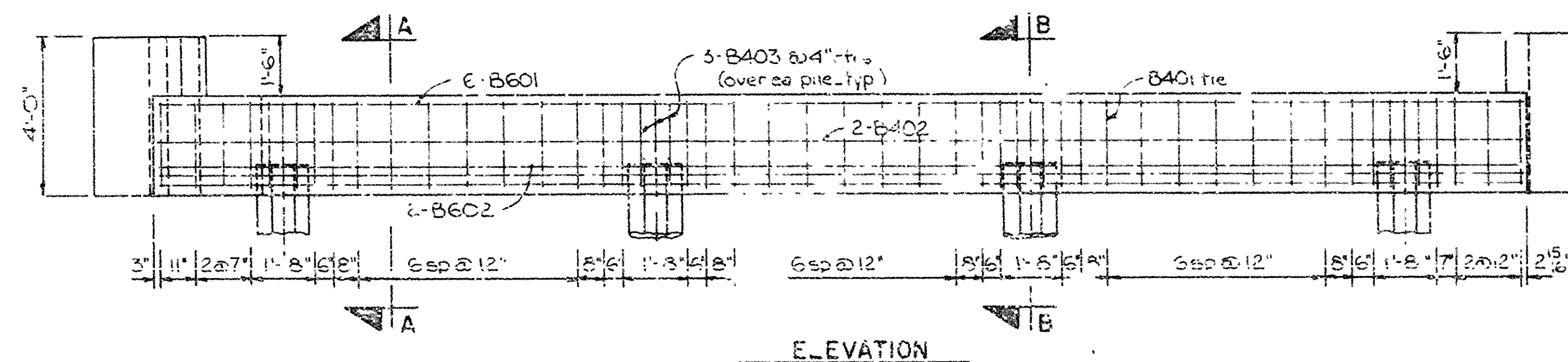
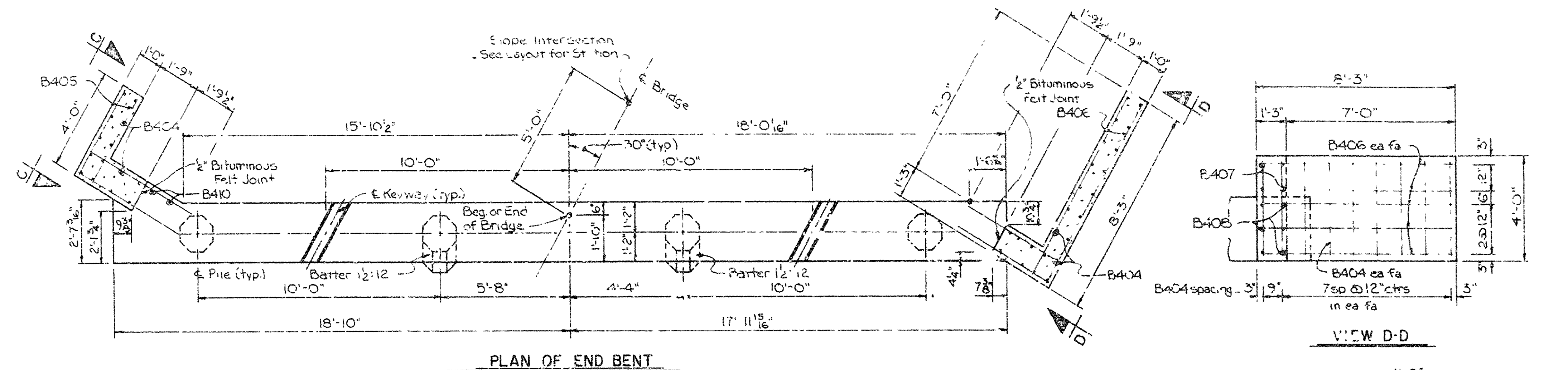
\* REFERS TO SP 802-5  
NOTE: 970 LB. OF STRUCTURAL STEEL IN DRAINS OF SLAB SPANS  
MEASURED AND PAID FOR AS CLASS S CONCRETE

SCHEDULE OF BRIDGE QUANTITIES  
CENTER POINT - WEST  
PRAIRIE COUNTY  
CO. ROUTE 1 SEC.  
ARKANSAS STATE HIGHWAY COMMISSION  
LITTLE ROCK, ARK.  
DRAWN BY: JGT DATE: 8-17  
CHECKED BY: R.M.G. DATE: 8-17  
DESIGNED BY: DATE: SCALE: None  
BRIDGE NO. 4340 DRAWING NO. 21347





DATE REVISED	BY	DATE REVISED	DATE REVISED	FED. ROAD NO.	STATE	FED. AID PROJ. NO.	PROJECT NO.	TOTAL SHEETS
				6	ARK.	NS-59-1	11	34
1. 4340 - BENT DTLS. - 21349								



## BAR LIST - EACH BENT

MARK	NO.	REQ'D	END	INT.	LENGTH	PIN	DIA	BENDING DIAGRAMS
B401	41	38			9'-2"	2"		
B402	2				5'-6"	Str		
B403	12	15			6'-2"	2"		
B404	36				3'-8"	Str		
B405	10				3'-8"	Str		
B406	10				7'-11"	Str		
B407	8				2'-5"	Str		
B408	6				4'-3"	Str		
B409	6				6'-0"	Str		
B410	2				2'-2"	Str		
B411		2			36'-5"	Str		
B601	6				36'-6"	Str		
B602	6				40'-3"	3 3/4"		
B603		*			2'-4"	Str		
B604		6			36'-5"	Str		
B605		6			40'-2"	3 3/4"		

\* 23 - Fix - Exp. Bt  
46 - Fix - Fix. Bt

## GENERAL NOTES

ALL CONCRETE SHALL BE CLASS "S" AND SHALL BE POURED IN THE DRY. EXPOSED CORNERS TO BE CHAMFERED 3/4" UNLESS OTHERWISE NOTED. MINIMUM 28 DAY COMPRESSIVE STRENGTH  $f_c = 3500$  PSI.

REINFORCING STEEL TO BE ASTM A615, OR A617, GRADE 60 (YIELD STRENGTH = 60,000 PSI). SHOP LISTS AND BENDING DIAGRAMS MAY BE SUBMITTED AND APPROVAL SECURED BEFORE FABRICATION IS BEGUN.

PILING SHALL BE 16" OCTAGONAL OR 16" SQUARE PRECAST CONCRETE PILE, AND THESE SHAPES SHALL NOT BE MIXED. ALL PILING SHALL BE DRIVEN TO A MINIMUM CAPACITY OF 44 TONS PER PILE.

SPECIFICATIONS: ARKANSAS STATE HIGHWAY COMMISSION STANDARD SPECIFICATIONS FOR HIGHWAY CONSTRUCTION, EDITION OF 1972, AND APPLICABLE SPECIAL PROVISIONS.

LIVE LOAD: HS

METHOD OF DESIGN: LOAD FACTOR

DESIGN SPECIFICATIONS: AASHTO STANDARD SPECIFICATIONS FOR HIGHWAY BRIDGES, 1973 EDITION WITH INTERIM SPECIFICATIONS.

DETAILS OF STANDARD PILE BENTS  
31'-0" R.C. SLAB SPANS  
28'-0" RDWY. 30° SKEW (RT. FWD.)  
CONCRETE PARAPET RAILING

ROUTE: SEC.

ARKANSAS STATE HIGHWAY COMMISSION

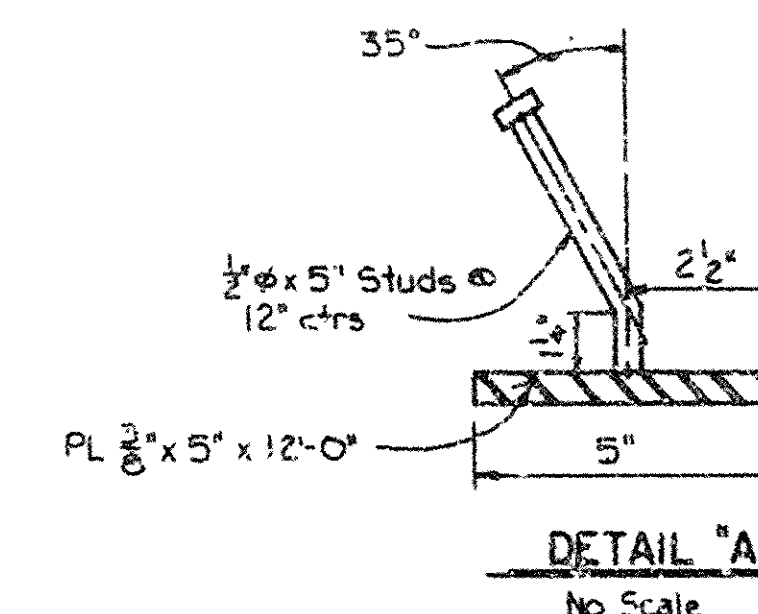
LITTLE ROCK, ARK.

DRAWN BY: JGT DATE: 9-6-77  
CHECKED BY: JLS DATE: 9-16-77  
DESIGNED BY: DATE:

BRIDGE NO. 4340 DRAWING NO. 21349



DATE	REVISED	BY	CHKD	APP'D	PROJ. NO.	STATE	FED. AID PROJ. NO.	CONTRACT NO.	SHEET NO.	TOTAL SHEETS
					6	ARK.	505-0055(1)		12	34
									4340 - SPAN DTLS - 21350	



NOTE: The surfaces of the 3/8" Plates which will not be in contact with concrete shall receive two coats of paint in the Shop. These coats shall be those specified as First Shop Coat and Second Field Coat in Subsection 807.59(a) and 807.59(c).

## BAR LIST - EA. SPAN

MARK	HC	REQ'D	END	INT	LENGTH	PIN DIA.	BENDING DIAGRAMS
S401	21	21	36'-0"	3"			
S402	23	23	30'-8"	Str			
S403	8	16	15'-2"	Str			
S404	6	-	15'-8"	Str			
S405	28	32	7'-0"	2"			
S406	28	32	7'-4"	2"			
S407	10	-	11"	Str			
S408	46	46	35'-0"	Str			
S409	2	-	14'-8"	Str			
S410	48	48	6'-4"	2"			
S411	48	48	3'-6"	2"			
S501	38	38	5'-7"	3 3/4"			
S601	4	-	7'-11"	3 3/4"			
S602	6	-	3'-6"	3 3/4"			
S603	10	20	15'-2"	Str			
S604	4	-	14'-6"	Str			
S605	6	-	15'-8"	Str			
S901	45	53	30'-3"	Str			
S902	8	-	31'-2"	Str			

## GENERAL NOTES

ALL CONCRETE TO BE CLASS "S" WITH A MINIMUM 28 DAY COMPRESSIVE STRENGTH  $f_c = 3500$  PSI. ALL EXPOSED CORNERS TO BE CHAMFERED 3/4" UNLESS OTHERWISE NOTED.

REINFORCING STEEL SHALL CONFORM TO ASTM A615, GRADE 60. (YIELD STRENGTH = 60,000 PSI).

ALL STRUCTURAL STEEL SHALL CONFORM TO ASTM A36.

BAR SUPPORTS FOR REINFORCING BARS WILL NOT BE PAID FOR DIRECTLY, BUT WILL BE CONSIDERED SUBSIDIARY TO THE ITEM "REINFORCING STEEL". SHOP LISTS AND BENDING DIAGRAMS OF REINFORCING STEEL, INCLUDING WIRE SUPPORTS, MAY BE SUBMITTED FOR APPROVAL BEFORE FABRICATION IS BEGUN.

ROOFING FELT, BITUMINOUS FELT, PREFORMED JOINT, STRUCTURAL STEEL, AND POURED SYNTHETIC POLYMER JOINTS SHALL BE MEASURED AND PAID FOR AS CLASS "S" CONCRETE.

SPECIFICATIONS: ARKANSAS STATE HIGHWAY COMMISSION STANDARD SPECIFICATIONS FOR HIGHWAY CONSTRUCTION, EDITION OF 1972, AND APPLICABLE SPECIAL PROVISIONS.

DESIGN SPECIFICATIONS: AASHTO 1973 AND 1974 THRU 1977 INTERIMS.

DESIGN LIVE LOADING: HL15

LOAD DISTRIBUTION TO SLAB: DEAD LOAD - 236 PSF; LIVE LOAD - 9.172 WHEELS/FT. OF WIDTH PLUS 30% IMPACT

LOAD FACTOR USED FOR DESIGN OF SLAB

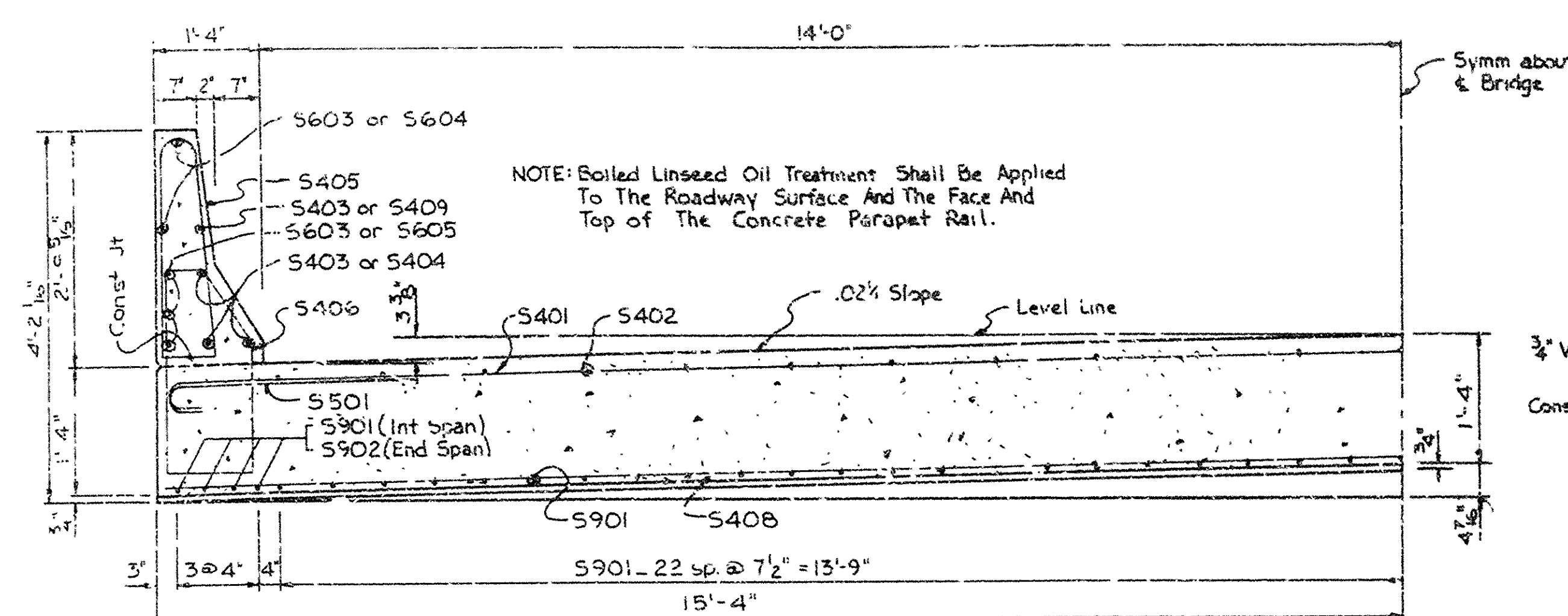
DETAILS OF STANDARD  
31'-0" R.C. SLAB SPAN  
30° RT. FWD. SKEW 26' CL. RDWY.  
CONC. PARAPET RAILING

ROUTE SEC.

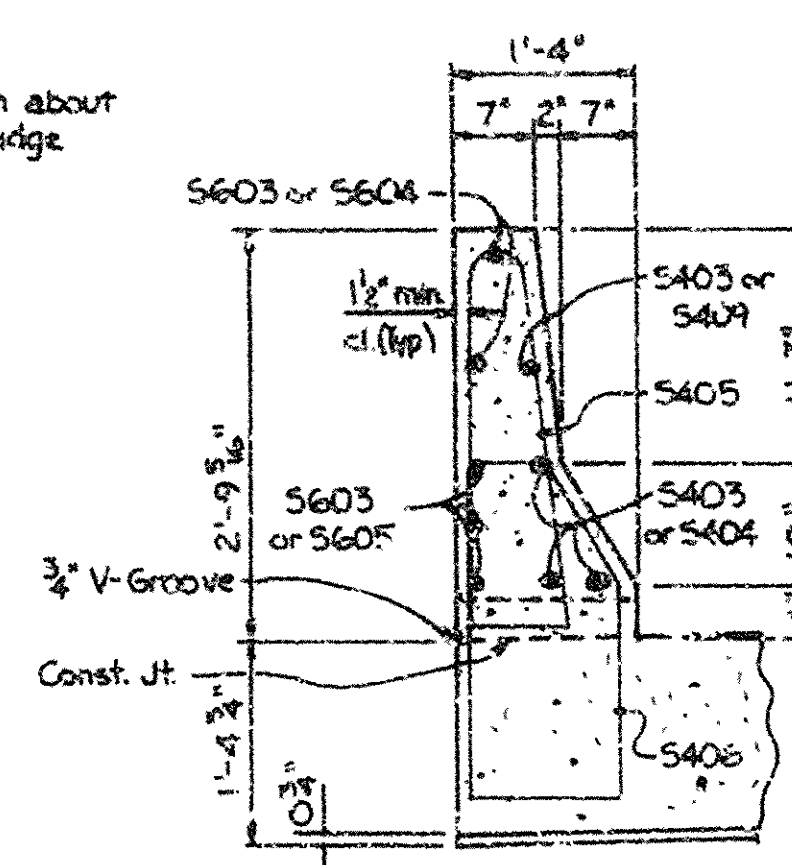
ARKANSAS STATE HIGHWAY COMMISSION  
LITTLE ROCK, ARK.

DRAWN BY: JST DATE: 6-21-77  
CHECKED BY: MGS DATE: 8-25-77  
DESIGNED BY: STD DATE: "

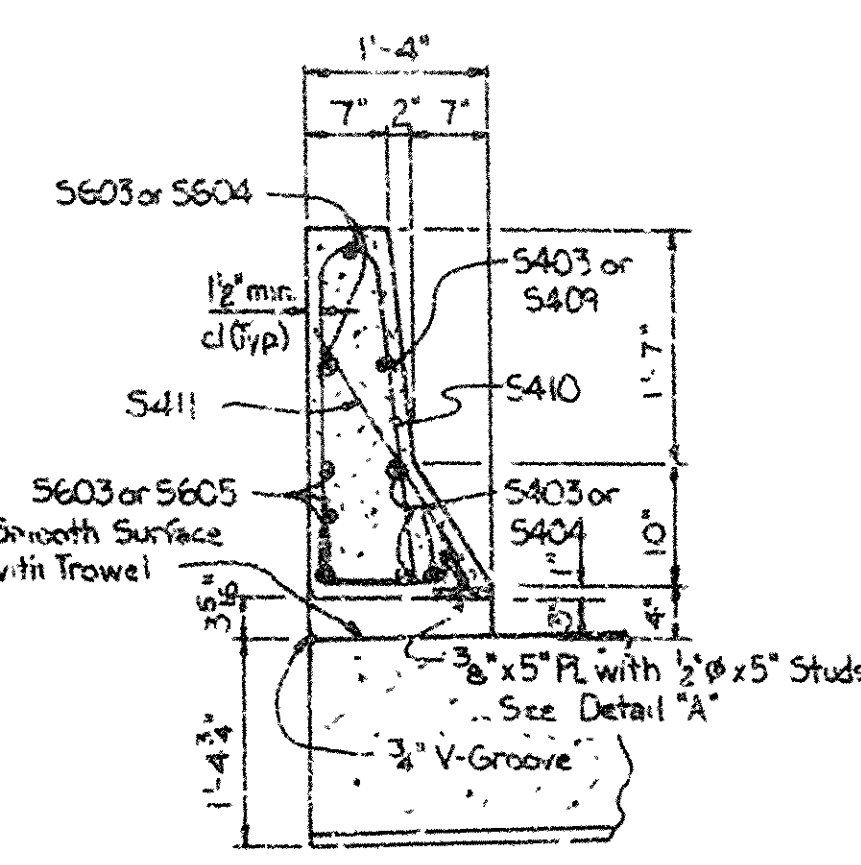
BRIDGE NO. 4340 DRAWING NO. 21350



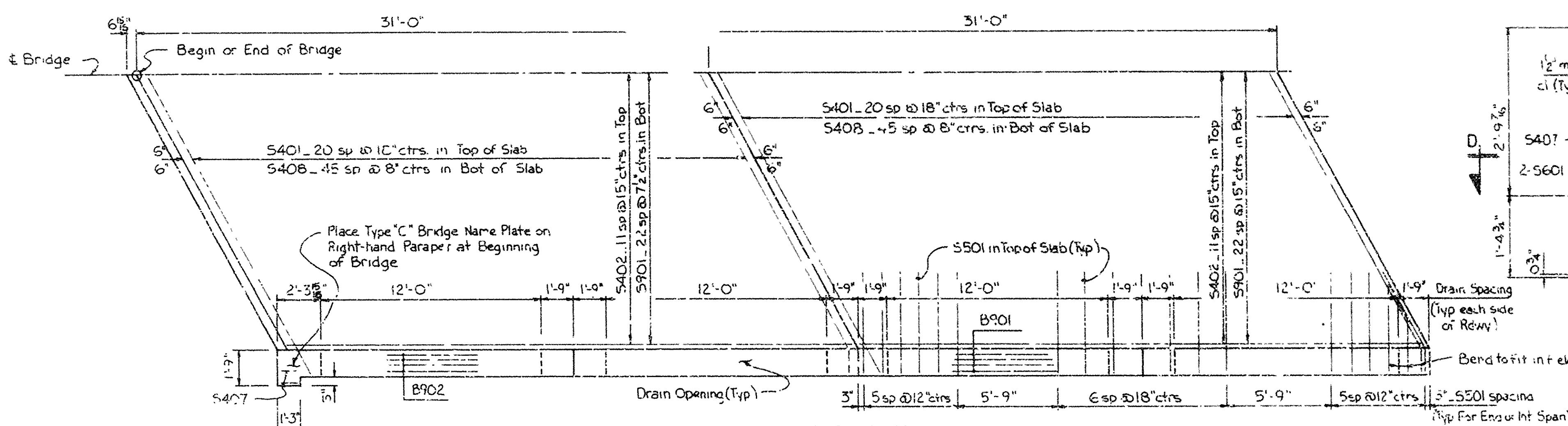
## HALF-SECTION THRU ROADWAY



## SECTION A-A

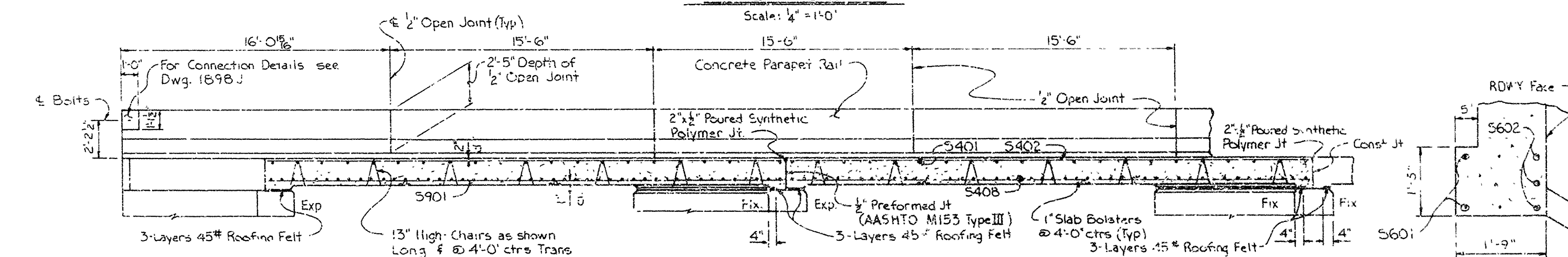


## SECTION B-B



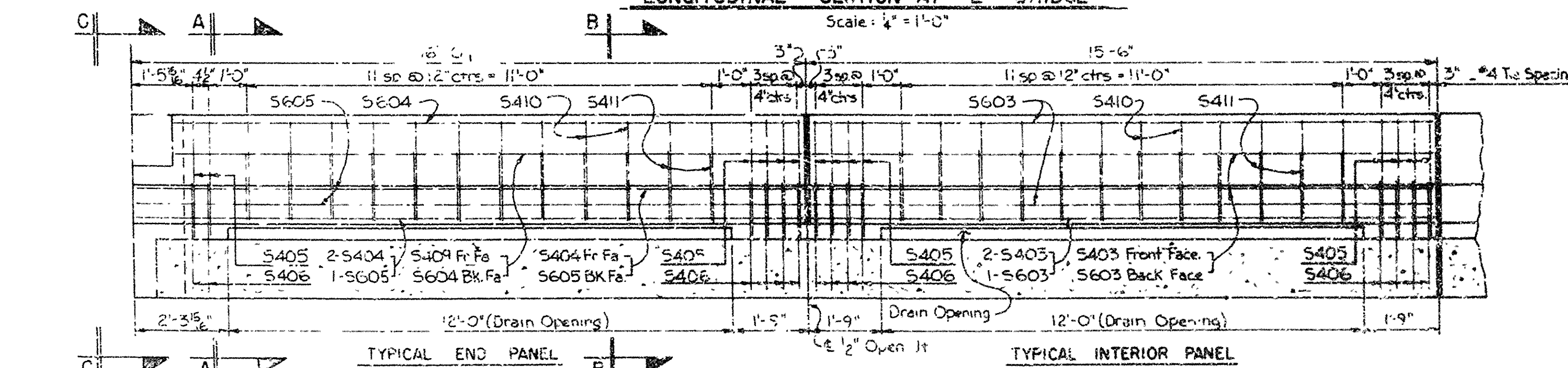
## HALF-PLAN

Scale: 1/4" = 1'-0"



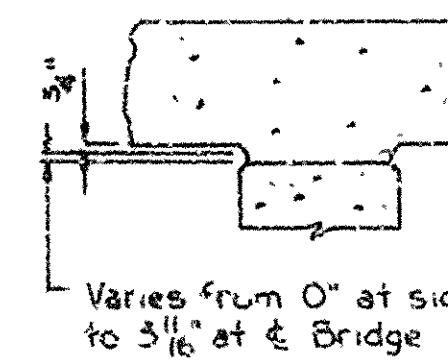
## LONGITUDINAL SECTION AT E BRIDGE

Scale: 1/4" = 1'-0"



## LONGITUDINAL SECTION AT CURB

Scale: 1/2" = 1'-0"



## RISER DETAIL

No Scale