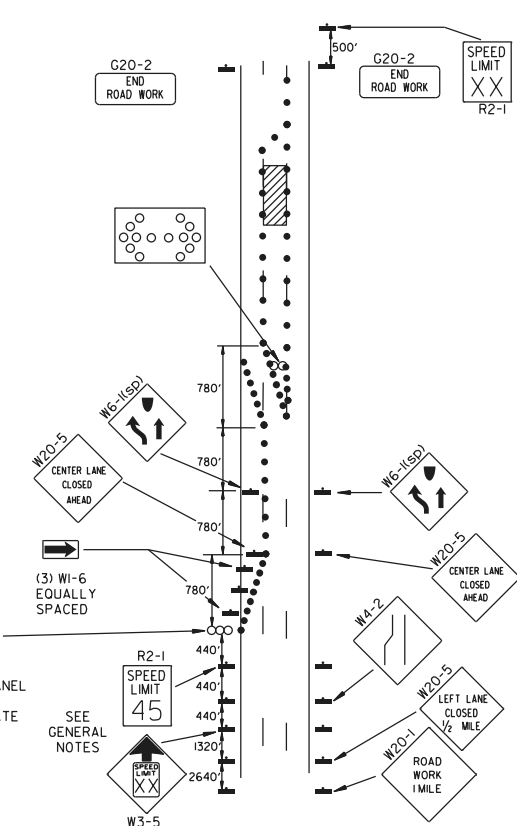
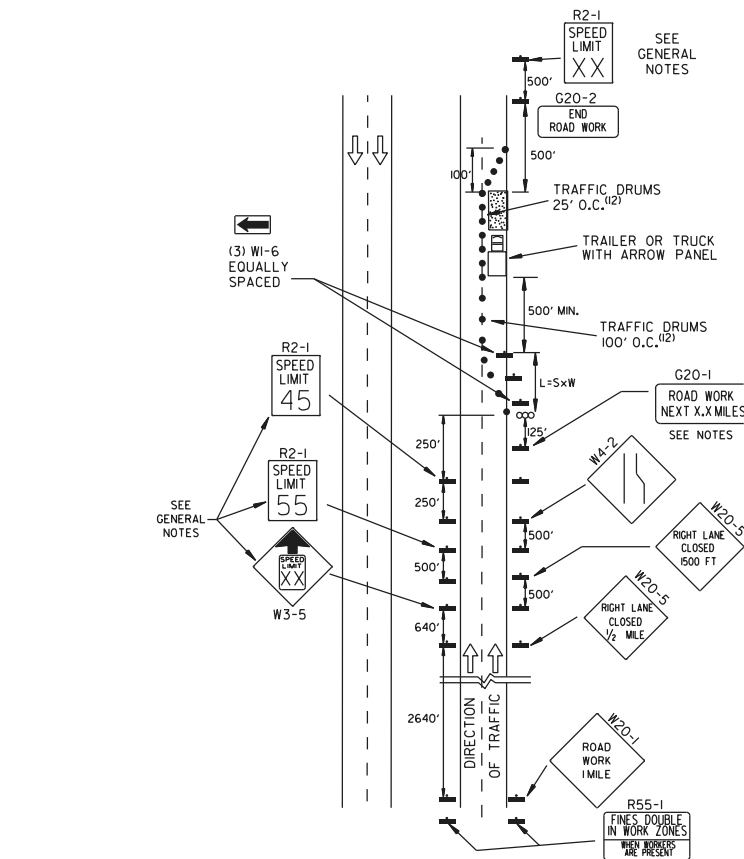


(A) TYPICAL APPLICATION - DAYTIME MAINTENANCE OPERATIONS OF SHORT DURATION ON A 4-LANE DIVIDED ROADWAY WHERE HALF OF THE ROADWAY IS CLOSED.

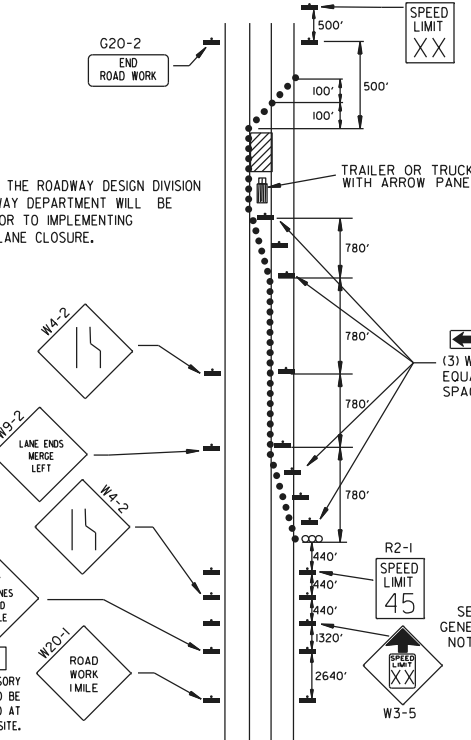
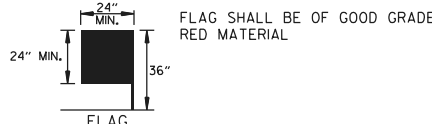
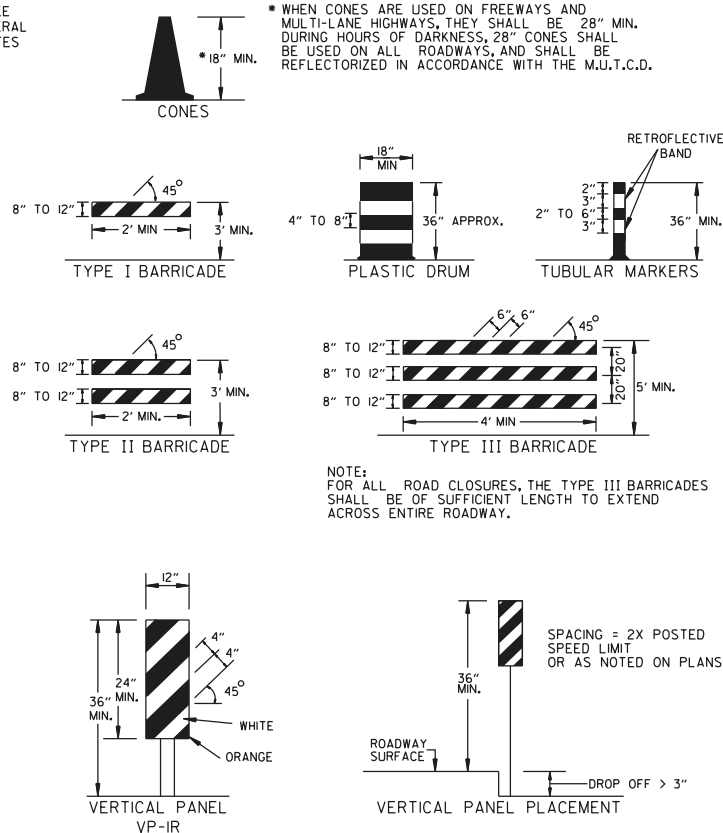


(B) TYPICAL APPLICATION - 3-LANE ONEWAY ROADWAY WHERE CENTER LANE IS CLOSED.



(C) TYPICAL APPLICATION - CONSTRUCTION OPERATIONS OF INTERMEDIATE TO LONG TERM DURATION ON A 4-LANE DIVIDED ROADWAY WHERE HALF OF THE ROADWAY IS CLOSED.

## CHANNELIZING DEVICES



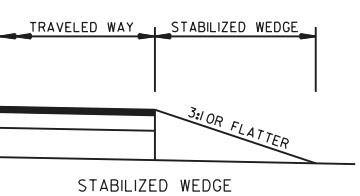
(D) TYPICAL APPLICATION - CLOSING MULTIPLE LANES OF A MULTILANE HIGHWAY.

## TRAFFIC CONTROL DEVICES

VERTICAL DIFFERENTIAL	LOCATION	NON-INTERSTATE	
		TRAFFIC CONTROL	
		≤ 45 MPH	> 45 MPH
≤ 1"	CENTERLINE	W8-11	W8-11
> 1"	CENTERLINE	W8-11 AND CENTERLINE LANE STRIPING	W8-11 AND CENTERLINE LANE STRIPING
> 3"	CENTERLINE	STANDARD LANE CLOSURE <sup>(6)</sup>	STANDARD LANE CLOSURE <sup>(6)</sup>
≤ 3"	EDGE OF TRAVELED LANE OR EDGE OF SHOULDER	W8-9 AND TRAFFIC DRUMS <sup>(1)</sup>	W8-9 AND TRAFFIC DRUMS <sup>(1)</sup>
> 3"	EDGE OF TRAVELED LANE OR EDGE OF SHOULDER	W8-17, EDGE LINE STRIPING, AND TRAFFIC DRUMS <sup>(1)</sup>	W8-17, EDGE LINE STRIPING, AND TRAFFIC DRUMS <sup>(1)</sup>
> 6"	EDGE OF TRAVELED LANE OR EDGE OF SHOULDER	W8-17, EDGE LINE STRIPING, AND TRAFFIC DRUMS <sup>(1)</sup>	W8-17, EDGE LINE STRIPING, AND TRAFFIC DRUMS <sup>(2)</sup>
> 18"	EDGE OF TRAVELED LANE OR EDGE OF SHOULDER	W8-17, EDGE LINE STRIPING, AND TRAFFIC DRUMS <sup>(1)</sup>	A STABILIZED WEDGE, W8-17, EDGE LINE STRIPING, AND TRAFFIC DRUMS <sup>(2)</sup>
> 24"	EDGE OF TRAVELED LANE OR EDGE OF SHOULDER	PRECAST CONCRETE BARRIER <sup>(4)</sup> & EDGE LINES	PRECAST CONCRETE BARRIER <sup>(4)</sup> & EDGE LINES

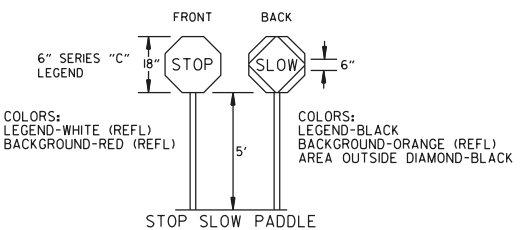
VERTICAL DIFFERENTIAL	LOCATION	INTERSTATE	
		TRAFFIC CONTROL	
		≤ 45 MPH	> 45 MPH
≤ 3"	CENTERLINE	W8-11 AND LANE STRIPING	W8-11 AND LANE STRIPING
≤ 3"	EDGE OF TRAVELED LANE OR EDGE OF SHOULDER	W8-9, EDGE LINE STRIPING, AND TRAFFIC DRUMS <sup>(2)</sup>	W8-9, EDGE LINE STRIPING, AND TRAFFIC DRUMS <sup>(2)</sup>
> 3"	EDGE OF TRAVELED LANE OR EDGE OF SHOULDER	W8-17, EDGE LINE STRIPING, AND TRAFFIC DRUMS <sup>(2)</sup>	W8-17, EDGE LINE STRIPING, AND TRAFFIC DRUMS <sup>(2)</sup>
> 6"	EDGE OF TRAVELED LANE OR EDGE OF SHOULDER	PRECAST CONCRETE BARRIER & EDGE LINES	PRECAST CONCRETE BARRIER & EDGE LINES

FORESLOPE	HEIGHT	INTERSTATE AND NON-INTERSTATE	
		TRAFFIC CONTROL	
		≤ 45 MPH	> 45 MPH
1:1	> 2 FT	PRECAST CONCRETE BARRIER	PRECAST CONCRETE BARRIER
2:1	≤ 5 FT	TRAFFIC DRUMS	TRAFFIC DRUMS
2:1	> 5 FT	PRECAST CONCRETE BARRIER	PRECAST CONCRETE BARRIER
Flatter than 2:1	N/A	TRAFFIC DRUMS	TRAFFIC DRUMS



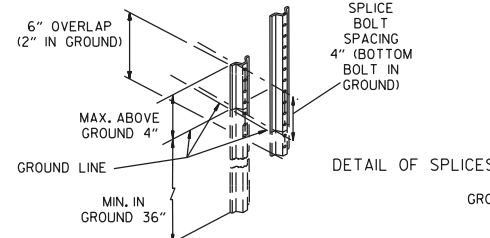
STABILIZED WEDGE

NOTE: MATERIALS FOR THE STABILIZED WEDGE SHALL MEET THE REQUIREMENTS PROVIDED IN SECTION 603.02 OF THE STANDARD SPECIFICATIONS.



STOP SLOW PADDLE

NOTES:  
1. USE SPICES ONLY WHEN NECESSARY FOR INSTALLATION. TYPICAL INSTALLATION SHOULD HAVE NO SPICES (SEE STD. DRAWING NO. SHS-2).  
2. NORMAL INSTALLATIONS WILL REQUIRE 1/4" DIA. BOLTS TO MOUNT SIGNS TO POST AND 5/16" DIA. BOLTS TO ASSEMBLE THE VARIOUS POST SUPPORTS. EACH OF THESE BOLTS SHALL BE CARRIAGE BOLTS.  
3. SIGN POSTS SHALL BE PAINTED GREEN; SIGNS SHALL NOT BE PAINTED, AND ALL SIGN POSTS SHALL BE PLUMB.



DETAIL OF SPLICES

REVISED TRAFFIC CONTROL DEVICES AND NOTES	DATE	DESCRIPTION	ARKANSAS STATE HIGHWAY COMMISSION	
			DATE EFFECTIVE	STANDARD DRAWING
05-22-25	05-22-2025	ADDED NOTE 12	05-22-2025	TC-3
08-12-21		REVISED TRAFFIC CONTROL DEVICES AND NOTES		
05-20-21		REVISED NOTE 10		
02-27-20		REVISED TRAFFIC CONTROL DEVICES DETAILS		
11-07-19		REVISED NOTE 9, ADDED NOTE 11		