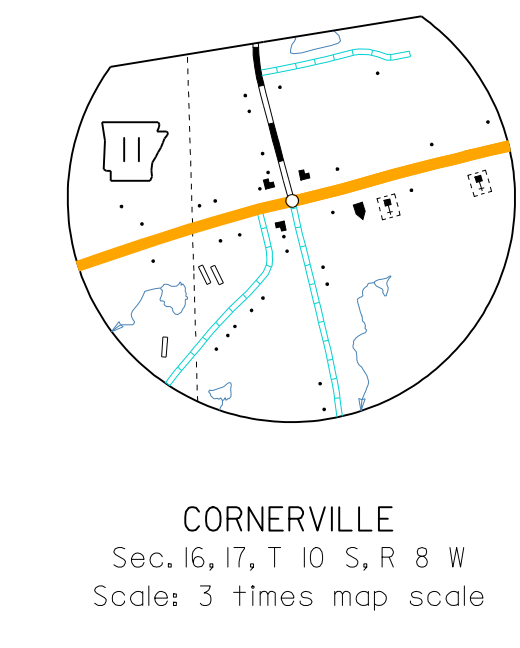
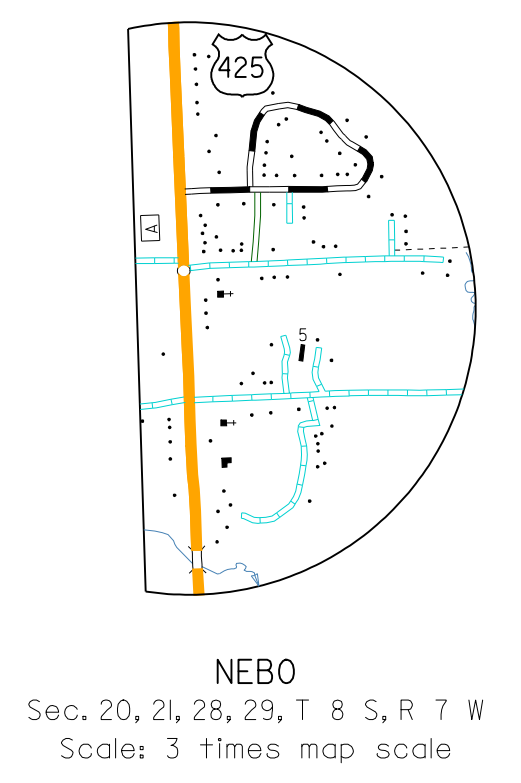
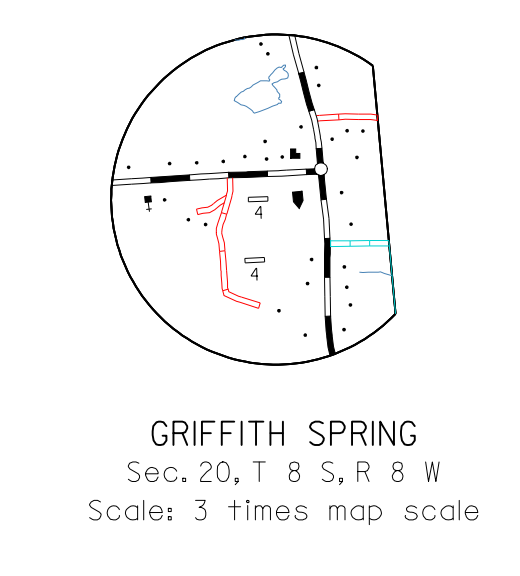
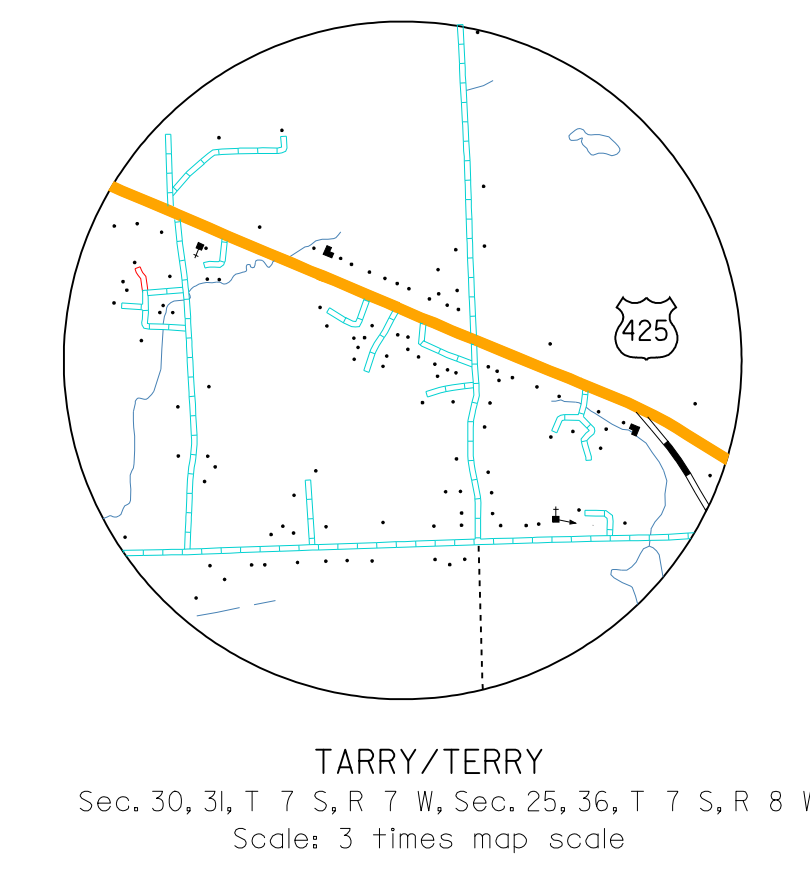


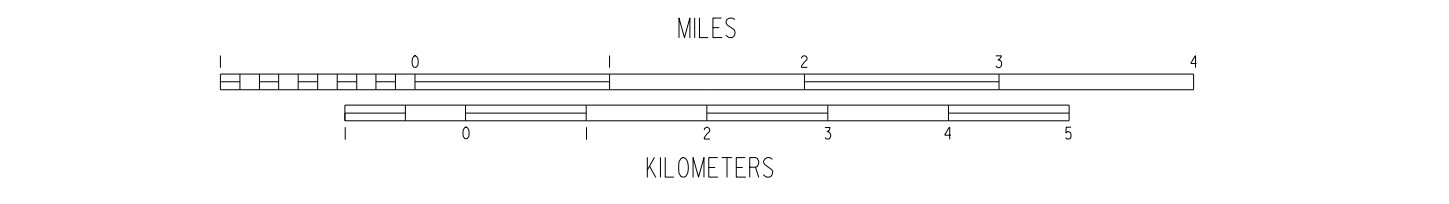
- LEGEND**
- COUNTY BOUNDARY
 - U.S. LAND TOWNSHIP LINE
 - SECTION LINE
 - PARK OR RESERVATION BOUNDARY
 - PAVED STATE OR U.S. HIGHWAY
 - U.S. NUMBERED HIGHWAY
 - STATE HIGHWAY
 - PAVED LOCAL ROAD
 - GRAVEL LOCAL ROAD
 - GRADED & DRAINED LOCAL ROAD
 - UNIMPROVED LOCAL ROAD
 - RAILROAD (with symbol for tracks used by freight carrier)
 - RAILROAD STATION
 - GRADE CROSSING
 - OVERPASS
 - UNDERPASS
 - HIGHWAY BRIDGE (with symbol for feet or more in length)
 - LEVEE OR DIKE
 - LEVEE WITH ROAD
 - MILEAGE BETWEEN POINTS
 - LAKE, RESERVOIR OR POND
 - LAKE, RESERVOIR OR POND WITH DAM
 - MARSH OR SWAMP
 - WIDE RIVER OR STREAM
 - DOCK, PIER OR LANDING
 - NAVIGABLE STREAM
 - DAM WITH LOCK
 - SMALL STREAM
 - DRAINAGE DITCH
 - CORPORATE LIMITS AND ROADS THROUGH TOWN
 - COUNTY SEAT
 - OTHER CITIES AND TOWNS
 - MUNICIPAL AIRPORT
 - PRIVATE AIRFIELD
 - FARM UNIT OR DWELLING
 - GROUP OF CLOSELY SPACED DWELLINGS (5,7 or more shown)
 - CHURCH OR OTHER RELIGIOUS INSTITUTION
 - SCHOOL
 - POST OFFICE + POST OFFICE AND BUSINESS
 - CEMETERY
 - CHURCH WITH CEMETERY ADJACENT
 - BUSINESS ESTABLISHMENT
 - FACTORY OR INDUSTRIAL PLANT-COTTON GN
 - GRAVEL PIT
 - QUARRY
 - TOWN OR COMMUNITY HALL
 - COUNTY OR STATE PRISON
 - POWER SUBSTATION
 - TRAILER PARK
 - FISH HATCHERY
 - CAMP OR LODGE
 - ATHLETIC FIELD OR AMUSEMENT PARK
 - SMALL PARK (up to 100,000 sq. ft. or less)
 - WATER SUPPLY STANDPIPE OR TANK
 - SEWAGE DISPOSAL PLANT
 - CHICKEN HOUSE OR OTHER LIVESTOCK
 - PICNIC GROUND



GENERAL HIGHWAY MAP
LINCOLN COUNTY
ARKANSAS

PREPARED BY
ARKANSAS STATE HIGHWAY AND TRANSPORTATION DEPARTMENT
TRANSPORTATION PLANNING AND POLICY DIVISION

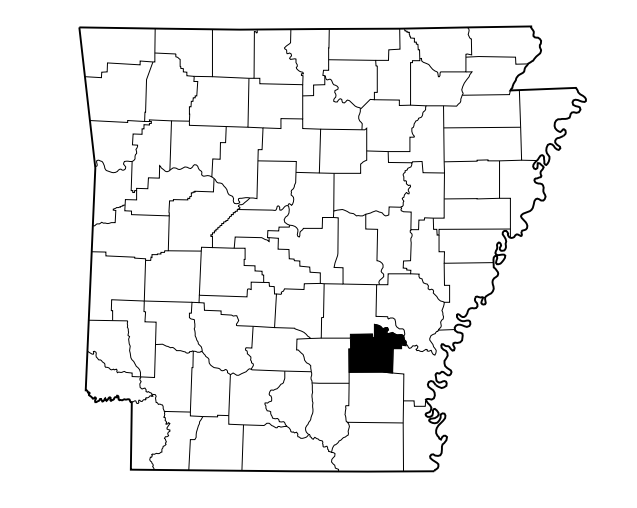
IN COOPERATION WITH
U.S. DEPARTMENT OF TRANSPORTATION
FEDERAL HIGHWAY ADMINISTRATION



NOTE: Enlargements of all congested areas are five times map scale unless otherwise noted.
Individual maps are available for all active incorporated cities.
Area: 572.2 square miles
Population: 124,300 Census
Map issued 10-7-11, replaces map issued 9-6-98
Field Inventory 978

Map revisions made from aerial photographs taken Winter 2006 and Summer 2009
Map compilation completed 9-3-11
County map produced using Computer Assisted Cartography.
Map revised 9-23-13, Added portion of St. Hwy. 530 (R 6)
Map revised 9-25-15, Portion of St. Hwy. 11 redesignated as R Spur 424
Map revised 8-21-16, Added extension of Hwy. 235 (R 6)
Map revised 12-10-16, portion of Hwy. 114 dropped from highway system (R 6)

Copies of this map are available
at a nominal fee from the
Arkansas State Highway and
Transportation Department,
P.O. Box 2284 Little Rock, Ark., 72203



Polyconic Projection-North American Datum